

LEA Name : Methacton SD
Address : 1001 Kriebel Mill Rd
Eagleville , PA 19403

County : Montgomery
AUN Number : 123465303
LEA Type : SD

Annual Financial Report Accuracy Certification Statement

For Fiscal Year Ending

6/30/2016

Pennsylvania Department of Education


&

Office of Comptroller Operations

PDE-2056: Intermediate Unit

PDE-2057: School District, AVTS/CTC, Charter School,
and Special Program Jointure

CERTIFICATION: By signing this page I agree that the electronic data submitted is a complete and accurate statement of the financial operations and status of the local education agency for the fiscal year. It has been prepared in accordance with generally accepted accounting principles and established Commonwealth of PA reporting guidelines.



Chief School Administrator Signature



Date



Board Secretary Signature



Date

Danielle Penza

Contact Person

dpenza@methacton.org

Contact Person E-mail Address

(610)489-5000

Ext :15005

Contact Person Telephone Number

(610)489-5019

Contact Person Fax Number

Audit Certification
Annual Financial Report:
For Fiscal Year Ending **6/30/2016**
(Pursuant to PA School Code Section 218(b))

LEA Name : Methacton SD
AUN Number : 123465303
County : Montgomery

Audit Certification Due: 12/31/2016

This certification is applicable to:

☒ **Orig. Annual Financial Report submitted to**
Comptroller Operations: 10/27/16
Date

☐ **Annual Financial Report revisions submitted on:** _____
Date

Auditing Firm: Major & Mastro, LLC
593 Bethlehem Pike, Suite 6
Montgomeryville, PA 18936

Auditor Contact Name: Vicki Mastro
Auditor Phone: 215-822-2350
Auditor E-mail: vmastro@majormastro.com

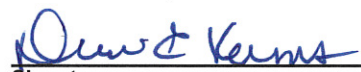
CERTIFICATION: By signing this page I agree that the financial statements of the school have been properly audited as noted above pursuant to Article XXIV, and in the auditor's professional opinion, the Annual Financial Report (PDE-2057) submitted on the date referenced is materially consistent with the audited financial statements.

Chief School Administrator


Signature

10/27/2016
Date

Board Secretary


Signature

10/27/2016
Date

Danielle Penza

Contact Person

dpenza@methacton.org

Contact Person E-mail Address

(610)489-5000

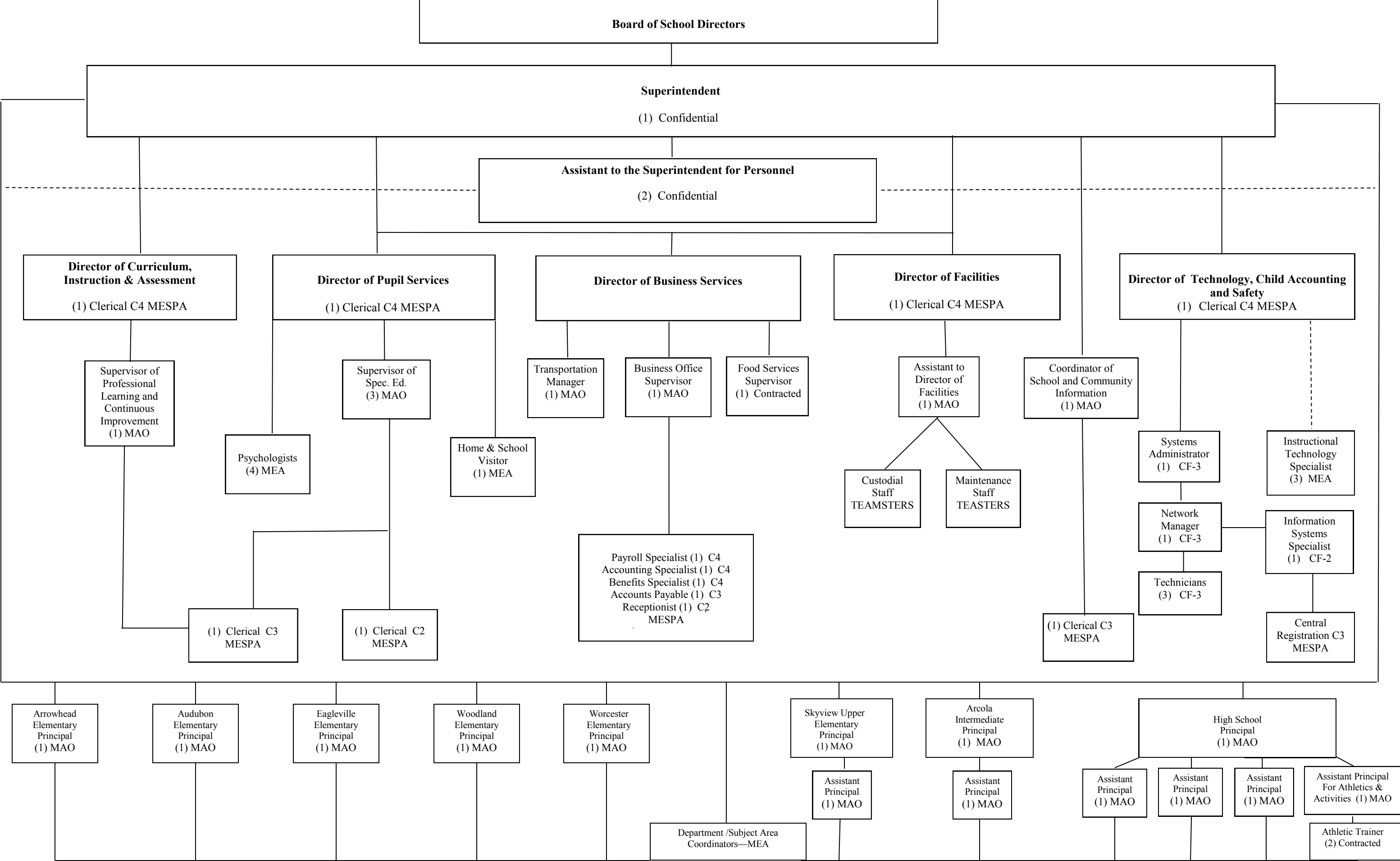
Ext :15005

Contact Person Telephone Number

(610)489-5019

Contact Person Fax Number

METHACTON SCHOOL DISTRICT
ORGANIZATIONAL CHART



Val Number	Description	Justification
11000	<p>NAG - Fund 10: Total Fund Balance must equal REG - Fund 10: Fund Balance - End of Year</p> <p>Fund Bal (NAG), Fund10: \$7,840,399.00 Fund Bal (REG), Fund 10: \$7,840,398.00</p>	Rounding.
11050	<p>NAG - Fund 39: Total Fund Balance must equal REG - Fund 39: Fund Balance - End of Year</p> <p>Fund Bal (NAG), Fund 39: \$1,381,420.00 Fund Bal (REG), Fund 39: \$1,381,421.00</p>	Rounding.
12195	<p>REG: Current Year AFR Beginning Fund Balance must equal Prior Year AFR Ending Fund Balance. Justifications to this error must fully explain the situation that prompted a fund balance restatement. "Auditor Adjustment" is not a sufficient justification.</p> <p>Total Govt Funds, Beg Bal: \$12,639,288.00 PY Ending Bal, Govt Funds: \$12,639,287.00</p>	Rounding.
12207	<p>REG - Fund 39: Current Year AFR Beginning Fund Balance must equal Prior Year AFR Ending Fund Balance. Justifications to this error must fully explain the situation that prompted a fund balance restatement. "Auditor Adjustment" is not a sufficient justification.</p> <p>REG Fund 39, Beg Fund Bal: \$5,016,288.00 PY Ending Fund Balance: \$5,016,287.00</p>	Rounding.
30501	<p>Revenue Detail: AFR amount must equal or exceed PDE FAI System amount.</p> <p>7311, AFR Rev Detail: 1363324.20 7311, PDE FAI System: \$1,368,930.97</p>	The difference of \$5,606.77 is the balance due from 2014-15 and was received in January, 2016. This revenue was already accrued back in 2014-15 per direction in an email from Ben Hanft on 7/15/15 regarding 14-15 transportation subsidy shortfalls.
50160	<p>SOIN: All Governmental Fund General Obligation Bonds must include an amount for Interest Paid during Fiscal Year. Correct data or enter a justification.</p>	GOB 2016 settled on 3/30/16. This was included as a debt addition, but no interest was paid during 2015-16. The first interest payment was due 9/1/16.
50460	<p>SESS - 2420 Medical Services: SESS Schedule amounts for Special Education vary from prior year by 40% or more. Correct the data or enter a justification.</p> <p>SESS Schedule 2420: \$518,917.58 Prior Year SESS Schedule 2420: \$74,961.10</p>	Reclassification of OT/PT services led to account code change from 2014-15.

LEA : 123465303 Methacton SD

Printed 10/27/2016 10:25:34 AM

Amounts Expressed in Whole Dollars		<u>General Fund</u> <u>(10)</u>	<u>Public Purpose Trust</u> <u>(27)</u>	<u>Other Compt Approved</u> <u>(28)</u>	<u>Athletic / Activity</u> <u>(29)</u>	<u>Capital Reserve (690.</u> <u>1850)</u> <u>(31)</u>
Assets And Deferred Outflows Of Resources						
Assets						
0100	Cash and Cash Equivalents	13,380,595				
0110	Investments					
0120	Taxes Receivable	2,367,041				
0130	Due From Other Funds	1,664,933				
0141	Due From Other Governments					
0142	State Revenue Receivable	2,209,558				
0143	Federal Revenue Receivable	246,431				
0145	Other Intergovernmental Revenue Receivable					
0146	Due from Primary Government					
0147	Due from Component Unit					
0150	Other Receivables	801,607				
0170	Inventories					
0180	Prepaid Expenses (Expenditures)	829,280				
0190	Other Current Assets					
Total Assets		\$21,499,445				
0910	Deferred Outflows of Resources					
Total Assets And Deferred Outflows Of Resources		\$21,499,445				

LEA : 123465303 Methacton SD

Printed 10/27/2016 10:25:34 AM

Amounts Expressed in Whole Dollars		<u>Capital Reserve (1431)</u> <u>(32)</u>	<u>Other Capital Projects</u> <u>Fund</u> <u>(39)</u>	<u>Debt Service</u> <u>(40)</u>	<u>Permanent</u> <u>(90)</u>	<u>Total Governmental</u> <u>Funds</u>
Assets And Deferred Outflows Of Resources						
Assets						
0100	Cash and Cash Equivalents		2,878,334			16,258,929
0110	Investments					
0120	Taxes Receivable					2,367,041
0130	Due From Other Funds					1,664,933
0141	Due From Other Governments					
0142	State Revenue Receivable					2,209,558
0143	Federal Revenue Receivable					246,431
0145	Other Intergovernmental Revenue Receivable					
0146	Due from Primary Government					
0147	Due from Component Unit					
0150	Other Receivables		389			801,996
0170	Inventories					
0180	Prepaid Expenses (Expenditures)					829,280
0190	Other Current Assets					
Total Assets			\$2,878,723			\$24,378,168
0910	Deferred Outflows of Resources					
Total Assets And Deferred Outflows Of Resources			\$2,878,723			\$24,378,168

LEA : 123465303 Methacton SD

Printed 10/27/2016 10:25:34 AM

Amounts Expressed in Whole Dollars		<u>General Fund</u> <u>(10)</u>	<u>Public Purpose Trust</u> <u>(27)</u>	<u>Other Compt Approved</u> <u>(28)</u>	<u>Athletic / Activity</u> <u>(29)</u>	<u>Capital Reserve (690.</u> <u>1850)</u> <u>(31)</u>
Liabilities And Deferred Inflows Of Resources And Fund Balances						
Liabilities						
0400	Due to Other Funds					
0411	Due to Other Governments					
0412	Due to Primary Government					
0413	Due to Component Unit					
0420	Accounts Payable	1,497,359				
0430	Contracts Payable					
0440	Current Portion of Long-Term Debt	126,006				
0450	Short-Term Payables					
0461	Accrued Salaries and Benefits	3,530,033				
0462	Payroll Deductions and Withholding	3,783,246				
0480	Unearned Revenues	69,248				
0490	Other Current Liabilities	2,946,070				
Total Liabilities		\$11,951,962				
0950	Deferred Inflows of Resources	1,707,084				
Fund Balances						
0810	Nonspendable Fund Balance	949,678				
0820	Restricted Fund Balance					
0830	Committed Fund Balance					
0840	Assigned Fund Balance					
0850	Unassigned Fund Balance	6,890,721				
Total Fund Balances		\$7,840,399				
Total Liabilities, Deferred Inflows Of Resources And Fund Balances		\$21,499,445				

LEA : 123465303 Methacton SD

Printed 10/27/2016 10:25:34 AM

Amounts Expressed in Whole Dollars		<u>Capital Reserve (1431)</u> <u>(32)</u>	<u>Other Capital Projects</u> <u>Fund</u> <u>(39)</u>	<u>Debt Service</u> <u>(40)</u>	<u>Permanent</u> <u>(90)</u>	<u>Total Governmental</u> <u>Funds</u>
Liabilities And Deferred Inflows Of Resources And Fund Balances						
Liabilities						
0400	Due to Other Funds		1,424,136			1,424,136
0411	Due to Other Governments					
0412	Due to Primary Government					
0413	Due to Component Unit					
0420	Accounts Payable		73,167			1,570,526
0430	Contracts Payable					
0440	Current Portion of Long-Term Debt					126,006
0450	Short-Term Payables					
0461	Accrued Salaries and Benefits					3,530,033
0462	Payroll Deductions and Withholding					3,783,246
0480	Unearned Revenues					69,248
0490	Other Current Liabilities					2,946,070
Total Liabilities			\$1,497,303			\$13,449,265
0950	Deferred Inflows of Resources					1,707,084
Fund Balances						
0810	Nonspendable Fund Balance					949,678
0820	Restricted Fund Balance					
0830	Committed Fund Balance					
0840	Assigned Fund Balance		1,381,420			1,381,420
0850	Unassigned Fund Balance					6,890,721
Total Fund Balances			\$1,381,420			\$9,221,819
Total Liabilities, Deferred Inflows Of Resources And Fund Balances			\$2,878,723			\$24,378,168

Amounts Expressed in Whole Dollars		<u>General Fund</u> <u>(10)</u>	<u>Public Purpose Trust</u> <u>(27)</u>	<u>Other Compt Approved</u> <u>(28)</u>	<u>Athletic / Activity</u> <u>(29)</u>	<u>Capital Reserve (690.</u> <u>1850)</u> <u>(31)</u>
Revenues						
6000	Revenue from Local Sources	78,443,755				
7000	Revenue from State Sources	20,256,584				
8000	Revenue from Federal Sources	373,809				
Total Revenues		\$99,074,148				
Expenditures						
1000	Instruction	54,915,989				
2000	Support Services	31,422,863				
3000	Operation of Non-Instructional Services	1,381,800				
4000	Facilities Acquisition, Construction and Improvement Services					
5110	Debt Service	9,979,254				
5130	Refund of Prior Year Revenues / Receipts	893				
5140	Short-Term Borrowing – Interest and Costs					
Total Expenditures		\$97,700,799				
Excess (Deficiency) Of Revenues Over Expenditures		\$1,373,349				
Other Financing Sources (Uses)						
9110	Face Value of Bonds Issued					
9120	Proceeds from Refunding of Bonds					
9130	Bond Premiums					
9200	Proceeds from Extended-Term Financing	33,442				
9300	Interfund Transfers - IN					
9400	Sale of or Compensation for Loss of Fixed Assets	1,491				
9710	Transfers from Component Units					
9720	Transfers from Primary Governments					
9910	Other Financing Sources Not Listed in the 9000 Series					
9990	Insurance Recoveries	9,116				
5120	Debt Service – Refunded Bonds					
5150	Bond Discounts					
5200	Interfund Transfers – Out	1,200,000				
5300	Transfers Out to Component Units/Primary Governments					
Total Other Financing Sources (Uses)		(\$1,155,951)				

LEA : 123465303 Methacton SD

Printed 10/27/2016 10:25:37 AM

Amounts Expressed in Whole Dollars		<u>Capital Reserve (1431)</u> <u>(32)</u>	<u>Other Capital Projects</u> <u>Fund</u> <u>(39)</u>	<u>Debt Service</u> <u>(40)</u>	<u>Permanent</u> <u>(90)</u>	<u>Total Governmental</u> <u>Funds</u>
Revenues						
6000	Revenue from Local Sources		415,509			78,859,264
7000	Revenue from State Sources					20,256,584
8000	Revenue from Federal Sources					373,809
Total Revenues			\$415,509			\$99,489,657
Expenditures						
1000	Instruction					54,915,989
2000	Support Services		352,157			31,775,020
3000	Operation of Non-Instructional Services					1,381,800
4000	Facilities Acquisition, Construction and Improvement Services		7,666,457			7,666,457
5110	Debt Service		1,197			9,980,451
5130	Refund of Prior Year Revenues / Receipts					893
5140	Short-Term Borrowing – Interest and Costs					
Total Expenditures			\$8,019,811			\$105,720,610
Excess (Deficiency) Of Revenues Over Expenditures			(\$7,604,302)			(\$6,230,953)
Other Financing Sources (Uses)						
9110	Face Value of Bonds Issued		2,428,935			2,428,935
9120	Proceeds from Refunding of Bonds		28,080,000			28,080,000
9130	Bond Premiums		4,155,820			4,155,820
9200	Proceeds from Extended-Term Financing					33,442
9300	Interfund Transfers - IN		1,200,000			1,200,000
9400	Sale of or Compensation for Loss of Fixed Assets					1,491
9710	Transfers from Component Units					
9720	Transfers from Primary Governments					
9910	Other Financing Sources Not Listed in the 9000 Series					
9990	Insurance Recoveries					9,116
5120	Debt Service – Refunded Bonds		31,895,320			31,895,320
5150	Bond Discounts					
5200	Interfund Transfers – Out					1,200,000
5300	Transfers Out to Component Units/Primary Governments					
Total Other Financing Sources (Uses)			\$3,969,435			\$2,813,484

Amounts Expressed in Whole Dollars		<u>General Fund</u> <u>(10)</u>	<u>Public Purpose Trust</u> <u>(27)</u>	<u>Other Compt Approved</u> <u>(28)</u>	<u>Athletic / Activity</u> <u>(29)</u>	<u>Capital Reserve</u> <u>(690.</u> <u>1850)</u> <u>(31)</u>
Special And Extraordinary Items						
9920	Special Items – Gains					
9930	Extraordinary Items – Gains					
5520	Special Items – Losses					
5530	Extraordinary Items – Losses					
Net Change In Fund Balances		\$217,398				
Fund Balance						
0001	Fund Balance - Beginning of Fiscal Year	7,623,000				
Fund Balance - End Of Year		\$7,840,398				

Amounts Expressed in Whole Dollars		<u>Capital Reserve (1431</u> <u>(32)</u>	<u>Other Capital Projects</u> <u>Fund</u> <u>(39)</u>	<u>Debt Service</u> <u>(40)</u>	<u>Permanent</u> <u>(90)</u>	<u>Total Governmental</u> <u>Funds</u>
Special And Extraordinary Items						
9920	Special Items – Gains					
9930	Extraordinary Items – Gains					
5520	Special Items – Losses					
5530	Extraordinary Items – Losses					
Net Change In Fund Balances			(\$3,634,867)			(\$3,417,469)
Fund Balance						
0001	Fund Balance - Beginning of Fiscal Year		5,016,288			12,639,288
Fund Balance - End Of Year			\$1,381,421			\$9,221,819

LEA : 123465303 Methacton SD

Printed 10/27/2016 10:25:38 AM

Amounts Expressed in Whole Dollars	Food Service (51)	Child Care Operations (52)	Other Enterprise (58)	TOTAL	Internal Service (60)
Assets And Deferred Outflows Of Resources					
Current Assets					
0100 Cash and Cash Equivalents	350,402			350,402	
0110 Investments					
0130 Due From Other Funds					
0141 Due From Other Governments					
0142 State Revenue Receivable	4,613			4,613	
0143 Federal Revenue Receivable	51,982			51,982	
0146 Due from Primary Government					
0147 Due from Component Unit					
0150 Other Receivables	1,402			1,402	
0170 Inventories	29,351			29,351	
0180 Prepaid Expenses (Expenditures)					
0190 Other Current Assets					
Total Current Assets	\$437,750			\$437,750	
Noncurrent Assets					
0211 Land					
0212 Site Improvements (Net)					
0220 Buildings and Building Improvements (Net)					
0230 Machinery, Equipment and Furniture (Net)	32,923			32,923	
0250 Construction in Progress					
0260 Long Term Prepayments					
0290 Other Noncurrent Assets					
Total Noncurrent Assets	\$32,923			\$32,923	
0910 Deferred Outflows of Resources					
Total Assets And Deferred Outflows Of Resources	\$470,673			\$470,673	

LEA : 123465303 Methacton SD

Printed 10/27/2016 10:25:38 AM

Amounts Expressed in Whole Dollars	Food Service (51)	Child Care Operations (52)	Other Enterprise (58)	TOTAL	Internal Service (60)
Liabilities And Deferred Inflows Of Resources And Net Position					
Current Liabilities					
0400 Due to Other Funds	120,399			120,399	
0411 Due to Other Governments					
0413 Due to Component Unit					
0420 Accounts Payable	67,653			67,653	
0430 Contracts Payable					
0440 Current Portion of Long-Term Debt					
0450 Short-Term Payables					
0461 Accrued Salaries and Benefits					
0462 Payroll Deductions and Withholding					
0480 Unearned Revenues	8,039			8,039	
0490 Other Current Liabilities	37,563			37,563	
Total Current Liabilities	\$233,654			\$233,654	
Noncurrent Liabilities					
0510 Bonds Payable					
0520 Extended-Term Financing Agreements Payable					
0530 Lease-Purchase Obligations					
0540 Accumulated Compensated Absences					
0550 Authority Lease Obligations					
0560 Other Post-Employment Benefits (OPEB)					
0570 Net Pension Liability					
0599 Other Long-Term Liabilities	120,398			120,398	
Total Noncurrent Liabilities	\$120,398			\$120,398	
Total Liabilities	\$354,052			\$354,052	
0950 Deferred Inflows of Resources					
Net Position					
0791 Invested in Capital Assets, Net of Related Debt	32,923			32,923	
0008 Restricted Net Position (0792 – 0798)					
0799 Unrestricted Net Position	83,698			83,698	
Total Net Position	\$116,621			\$116,621	
Total Liabilities And Deferred Inflows Of Resources And Net Position	\$470,673			\$470,673	

Amounts Expressed in Whole Dollars	<u>Food Service</u> <u>(51)</u>	<u>Child Care Operations</u> <u>(52)</u>	<u>Other Enterprise</u> <u>(58)</u>	<u>TOTAL</u>	<u>Internal Service</u> <u>(60)</u>
Operating Revenues					
6600 Food Service Revenue	998,394			998,394	
0071 Charges for Services					
0072 Other Operating Revenue					
Total Operating Revenues	\$998,394			\$998,394	
Operating Expenses					
100 Personnel Services – Salaries					
200 Personnel Services – Employee Benefits					
300 Purchased Professional and Technical Services					
400 Purchased Property Services					
500 Other Purchased Services	1,306,455			1,306,455	
600 Supplies	57,292			57,292	
740 Depreciation	3,873			3,873	
810 Dues and Fees					
890 Miscellaneous Expenditures					
Total Operating Expenses	\$1,367,620			\$1,367,620	
Operating Income (Loss)	(\$369,226)			(\$369,226)	
Non Operating Revenues (Expenses)					
6500 Earnings on Investments	840			840	
6920 Contributions and Donations from Private Sources					
6930 Gains or Losses on Sale of Fixed Assets					
6991 Refunds of a Prior Year Expenditure					
7000 Revenue from State Sources	30,512			30,512	
8000 Revenue from Federal Sources	386,460			386,460	
820 Claims and Judgments Against the LEA					
830 Interest					
TOTAL Non Operating Revenues (Expenses)	\$417,812			\$417,812	
Income (Loss) Before Contributions And Transfers	\$48,586			\$48,586	

Amounts Expressed in Whole Dollars	<u>Food Service</u> <u>(51)</u>	<u>Child Care Operations</u> <u>(52)</u>	<u>Other Enterprise</u> <u>(58)</u>	<u>TOTAL</u>	<u>Internal Service</u> <u>(60)</u>
Contributions, Transfers, and Special and Extraordinary Items					
5200 Interfund Transfers – Out					
5300 Transfers Out to Component Units/Primary Governments					
5520 Special Items – Losses					
5530 Extraordinary Items – Losses					
9300 Interfund Transfers - IN					
9500 Capital Contributions					
9700 Transfers IN From Component Units/Primary Governments					
9920 Special Items – Gains					
9930 Extraordinary Items – Gains					
Change In Net Position	\$48,586			\$48,586	
0002 Net Position - Beginning of Fiscal Year	68,035			68,035	
0003 Accounting Changes / Residual Equity Transfers					
Net Position - End Of Year	\$116,621			\$116,621	

LEA : 123465303 Methacton SD

Printed 10/27/2016 10:25:43 AM

Amounts Expressed in Whole Dollars	<u>Food Service</u> <u>(51)</u>	<u>Child Care Operations</u> <u>(52)</u>	<u>Other Enterprise</u> <u>(58)</u>	<u>TOTAL</u>	<u>Internal Service(60)</u>
Cash Flows From Operating Activities					
0011 Cash Receipts From Users	1,093,617			1,093,617	
0012 Cash Receipts From Assessments Made to Other Funds					
0013 Cash Receipts From Earnings on Investments					
0014 Cash Receipts From Other Operating Revenue					
0015 Cash Payments To Employees For Services					
0016 Cash Payments For Insurance Claims					
0017 Cash Payments To Suppliers For Goods and Services	1,385,311			1,385,311	
0018 Cash Payments For Other Operating Expenses					
Net Cash Provided By (Used For) Operating Activities	(\$291,694)			(\$291,694)	
Cash Flows From Non-Capital Financing Activities					
0021 Receipts From Local Sources - 6000					
0022 Receipts From State Sources - 7000	27,143			27,143	
0023 Receipts From Federal Sources -8000	346,921			346,921	
0024 Notes and Loans Received (Repaid)					
0025 Interest Paid on Notes/Loans - 5100-830					
0026 Operating Transfers In (Out)/Residual Equity Trans					
0027 Operating Transfers In (Out) Primary Government / Comp Unit	(120,399)			(120,399)	
0028 Receipts From Refund of Prior Year Expenditures - 6991					
0029 Special and Extraordinary Gains (losses)					
Net Cash Prov By (Used for) Non-Capital Financing Activities	\$253,665			\$253,665	
Cash Flows From Capital and Related Financing Activities					
0031 Payments For Fac Acq, Const, and Imp - 4000					
0032 Gain / (Loss) on Sale of Fixed Assets - 6930					
0033 Proceeds From Extended Term Financing - 9200					
0034 Principal Paid on Financing Agreements					
0035 Interest Paid on Financing Agreements - 5100-830					
0036 (Inc) Dec in Contributed Capital					
Net Cash Prov By (Used for) Capital and Related Financing Activities					
Cash Flows From Investing Activities					
0041 Earnings on Investments - 6500	840			840	
0042 Purchase of Inv Securities / Deposits to Inv Pools					
0043 Receipts From Investment Pool Withdrawals					
0044 Proceeds from Sale and Maturity of Inv Securities					
0045 Loans Received (Paid)					
Net Cash Prov By (Used for) Investing Activities	\$840			\$840	

LEA : 123465303 Methacton SD

Printed 10/27/2016 10:25:43 AM

	Food Service (51)	Child Care Operations (52)	Other Enterprise (58)	TOTAL	Internal Service (60)
Net Increase (Decrease) in Cash Flows	(37,189)			(37,189)	
0004 Cash and Cash Equivalents Beginning of Year	387,591			387,591	
Cash and Cash Equivalents at Year End	\$350,402			\$350,402	
Reconciliation of Operating Income (Loss) To Net Cash Provided by (Used For) Operating Activities					
0005 Operating Income (Loss) per REP	(369,226)			(369,226)	
Adjustments					
0051 Depreciation and Net Amortization	3,873			3,873	
0052 Provision for Uncollectible Accounts					
0053 Other Adjustments					
Effect of Changes in Assets, Liabilities, Deferred Outflows and Deferred Inflows					
0054 (Inc) Dec In Accounts Receivable (0120-0150)	89,042			89,042	
0055 Advances to Other Funds (0160)					
0056 (Inc) Dec in Inventories (0170)	(5,659)			(5,659)	
0057 (Inc) Dec in Prepaid Expenses (0180)					
0058 (Inc) Dec in Other Current or Noncurrent Assets					
0064 Deferred Outflows (0910)					
0059 Inc (Dec) in Accounts Payable (0400-0450)	(15,905)			(15,905)	
0060 Inc (Dec) in Accrued Salaries/Benefits (0461)					
0065 Inc (Dec) in Net Pension Liabilities (0570)					
0066 Inc (Dec) in Other Postemp Benefit Oblig (0560)					
0061 Inc (Dec) in Payroll Deductions/Withholding (0462)					
0062 Inc (Dec) in Unearned Revenue (0480)					
0063 Inc (Dec) in Other Current or Noncurrent Liabilities	6,181			6,181	
0067 Deferred Inflows (0950)					
Total Adjustments	\$77,532			\$77,532	
Cash Provided By (Used for) Total	(\$291,694)			(\$291,694)	

COMBINED STATEMENT OF CASH FLOWS
SCHEDULE OF NONCASH INVESTING, CAPITAL, AND FINANCING ACTIVITIES

Explanation of Transaction and Balance Sheet Effect	Amount
Donated Commodities Recevied	60,165
Donated Commodities Used	60,162
Total	\$120,327

LEA : 123465303 Methacton SD

Printed 10/27/2016 10:25:43 AM

Amounts Expressed in Whole Dollars	<u>Private Purpose Trust</u> <u>(71)</u>	<u>Investment Trust</u> <u>(72)</u>	<u>Pension Trust</u> <u>(73)</u>	<u>Activity</u> <u>(81)</u>
Assets And Deferred Outflows Of Resources				
Assets				
0100 Cash and Cash Equivalents	96,966			396,803
0110 Investments				
0130 Due From Other Funds				
0147 Due from Component Unit				
0150 Other Receivables				3,034
0170 Inventories				
0180 Prepaid Expenses (Expenditures)				
0190 Other Current Assets				
0220 Buildings and Building Improvements (Net)				
0230 Machinery, Equipment and Furniture (Net)				
Total Assets	\$96,966			\$399,837
0910 Deferred Outflows of Resources				
Total Assets And Deferred Outflows Of Resources	\$96,966			\$399,837

LEA : 123465303 Methacton SD

Printed 10/27/2016 10:25:43 AM

Amounts Expressed in Whole Dollars

	<u>Other Agency</u> <u>(89)</u>	<u>Discrete Component Units</u> <u>(98)</u>	<u>Discrete Component Units</u> <u>(99)</u>	<u>Total Fiduciary Funds</u>
Assets And Deferred Outflows Of Resources				
Assets				
0100 Cash and Cash Equivalents				493,769
0110 Investments				
0130 Due From Other Funds				
0147 Due from Component Unit				
0150 Other Receivables				3,034
0170 Inventories				
0180 Prepaid Expenses (Expenditures)				
0190 Other Current Assets				
0220 Buildings and Building Improvements (Net)				
0230 Machinery, Equipment and Furniture (Net)				
Total Assets				\$496,803
0910 Deferred Outflows of Resources				
Total Assets And Deferred Outflows Of Resources				\$496,803

LEA : 123465303 Methacton SD

Printed 10/27/2016 10:25:43 AM

Amounts Expressed in Whole Dollars	<u>Private Purpose Trust</u> <u>(71)</u>	<u>Investment Trust</u> <u>(72)</u>	<u>Pension Trust</u> <u>(73)</u>	<u>Activity</u> <u>(81)</u>
Liabilities, Deferred Inflows Of Resources And Net Position				
Liabilities				
0400 Due to Other Funds				
0411 Due to Other Governments				
0412 Due to Primary Government				
0413 Due to Component Unit				
0420 Accounts Payable				5,424
0430 Contracts Payable				
0450 Short-Term Payables				
0461 Accrued Salaries and Benefits				
0462 Payroll Deductions and Withholding				
0480 Unearned Revenues				
0490 Other Current Liabilities				394,413
Total Liabilities				\$399,837
0950 Deferred Inflows of Resources				
Net Position				
0791 Invested in Capital Assets, Net of Related Debt				
0009 Restricted Net Position (0792 – 0798)	96,966			
0799 Unrestricted Net Position				
Total Net Position	\$96,966			
Total Liabilities, Deferred Inflows Of Resources And Net Position	\$96,966			\$399,837

LEA : 123465303 Methacton SD

Printed 10/27/2016 10:25:43 AM

Amounts Expressed in Whole Dollars	Other Agency (89)	Discrete Component Units (98)	Discrete Component Units (99)	Total Fiduciary Funds
Liabilities, Deferred Inflows Of Resources And Net Position				
Liabilities				
0400 Due to Other Funds				
0411 Due to Other Governments				
0412 Due to Primary Government				
0413 Due to Component Unit				
0420 Accounts Payable				5,424
0430 Contracts Payable				
0450 Short-Term Payables				
0461 Accrued Salaries and Benefits				
0462 Payroll Deductions and Withholding				
0480 Unearned Revenues				
0490 Other Current Liabilities				394,413
Total Liabilities				\$399,837
0950 Deferred Inflows of Resources				
Net Position				
0791 Invested in Capital Assets, Net of Related Debt				
0009 Restricted Net Position (0792 – 0798)				96,966
0799 Unrestricted Net Position				
Total Net Position				\$96,966
Total Liabilities, Deferred Inflows Of Resources And Net Position				\$496,803

LEA : 123465303 Methacton SD

Printed 10/27/2016 10:25:44 AM

Amounts Expressed in Whole Dollars	<u>Private Purpose Trust</u> <u>(71)</u>	<u>Investment Trust</u> <u>(72)</u>	<u>Pension Trust</u> <u>(73)</u>	<u>Discrete Component</u> <u>Units</u> <u>(98)</u>	<u>Discrete Component</u> <u>Units</u> <u>(99)</u>	<u>Total Fiduciary</u> <u>Funds</u>
Additions						
0091 Gifts and Contributions	8,900					8,900
0092 Other Additions	370					370
Deductions						
0093 Scholarships Awarded	8,200					8,200
0094 Other Deductions						
Change In Net Position	\$1,070					\$1,070
0006 Net Position – Beginning of Fiscal Year	95,896					95,896
0007 Net Position Held in Trust for Pension Benefits						
Net Position - End of Fiscal Year	\$96,966					\$96,966

LEA : 123465303 Methacton SD

General Fund (10)

Printed 10/27/2016 10:25:45 AM

Page - 1 of 4

	Revenue Reported In Current Year	Current Year Tax Accrual	Prior Year Tax Accrual	Taxes Collected In Current Year
Revenue from Local Sources				
6111 Current Real Estate Taxes	66,198,577.61			66,198,577.61
6112 Interim Real Estate Taxes	389,542.33	2,668.12	9,551.64	396,425.85
6113 Public Utility Realty Taxes	85,661.65			85,661.65
6114 Payments in Lieu of Current Taxes - State / Local	56,418.92			56,418.92
6120 Current Per Capita Taxes, Section 679	88,795.18	38,082.68	37,753.63	88,466.13
6141 Current Act 511 Per Capita Taxes	88,795.13	38,082.67	37,753.63	88,466.09
6142 Current Act 511 Occupation Taxes - Flat Rate	102,333.80	10,598.18	3,046.30	94,781.92
6151 Current Act 511 Earned Income Taxes	6,801,620.13	155,776.64	198,453.07	6,844,296.56
6153 Current Act 511 Real Estate Transfer Taxes	948,499.86	198,951.40	167,595.59	917,144.05
6154 Current Act 511 Amusement Taxes	54,906.46	6,316.92	6,197.77	54,787.31
6411 Delinquent Real Estate Taxes	1,385,333.54	77,270.00	87,439.48	1,395,503.02
6420 Delinquent Per Capita Taxes, Section 679	23,488.94	4,621.41	4,186.88	23,054.41
6440 Delinquent Local Enabling Taxes - Flat Rate Assessments	23,500.57	4,621.40	4,186.88	23,066.05
6500 Earnings on Investments	61,466.10			
6700 Revenues from LEA Activities	168,408.50			
6831 Federal Revenue Received from Other Pennsylvania Public LEAs	34,325.14			
6832 Federal IDEA Revenue Received as Pass Through	888,081.84			
6910 Rentals	113,762.00			
6920 Contributions and Donations from Private Sources	1,378.77			
6942 Summer School Tuition	28,056.00			
6943 Adult Education Tuition	208,364.29			
6944 Receipts from Other LEAs in Pennsylvania - Education	340,650.00			
6991 Refunds of a Prior Year Expenditure	164,239.12			
6992 Energy Efficiency Revenues and Incentives	177,648.61			
6999 Other Revenues Not Specified Above	9,900.74			
TOTAL Revenue from Local Sources	\$78,443,755.23	\$536,989.42	\$556,164.87	\$76,266,649.57

	Revenue Reported In Current Year			
Revenue from State Sources				
7110 Basic Education Funding	6,526,696.45			
7160 Tuition for Orphans Subsidy	40,279.74			
7271 Special Education funds for School-Aged Pupils	2,545,129.91			
7311 Pupil Transportation Subsidy	1,363,324.20			
7312 Nonpublic and Charter School Pupil Transportation Subsidy	362,670.00			
7320 Rental and Sinking Fund Payments / Building Reimbursement Subsidy	161,538.42			
7330 Health Services (Medical, Dental, Nurse, Act 25)	89,886.04			
7340 State Property Tax Reduction Allocation	1,946,884.12			
7505 Ready to Learn Block Grant	238,330.00			
7810 State Share of Social Security and Medicare Taxes	1,514,935.13			
7820 State Share of Retirement Contributions	5,466,910.30			
TOTAL Revenue from State Sources	\$20,256,584.31			

Revenue Reported <u>In Current Year</u>				
<u>Revenue from Federal Sources</u>				
8514 NCLB, Title I - Improving the Academic Achievement of the Disadvantaged	169,370.34			
8515 NCLB, Title II - Preparing, Training and Recruiting High Quality Teachers and Principals	106,678.00			
8810 School-Based Access Medicaid Reimbursement Program (SBAP) Reimbursements (Access)	82,000.00			
8820 Medical Assistance Reimbursement for Administrative Claiming (Quarterly) Program	15,760.94			
TOTAL Revenue from Federal Sources	\$373,809.28			

	Revenue Reported In Current Year			
<u>Other Financing Sources</u>				
9290 Other Extended-Term Financing Proceeds	33,441.55			
9400 Sale of or Compensation for Loss of Fixed Assets	1,491.00			
9990 Insurance Recoveries	9,116.14			
TOTAL Other Financing Sources	\$44,048.69			
TOTAL FROM ALL SOURCES	\$99,118,197.51	\$536,989.42	\$556,164.87	\$76,266,649.57

Revenue from Local Sources	78,443,755.23
Revenue from State Sources	20,256,584.31
Revenue from Federal Sources	373,809.28
Other Financing Sources	44,048.69
TOTAL FROM ALL SOURCES	\$99,118,197.51

LEA : 123465303 Methacton SD

Printed 10/27/2016 10:25:46 AM

General Fund (10)		
1000 Instruction		<u>Total</u>
100 <u>Personnel Services – Salaries</u>		
100 Personnel Services – Salaries	29,288,263.13	
Total Personnel Services – Salaries	\$29,288,263.13	
200 <u>Personnel Services – Employee Benefits</u>		
210 Group Insurance – Contracted Provider	63,005.13	
220 Social Security Contributions	2,153,438.57	
230 PSERS Retirement Contributions	7,592,029.24	
240 Tuition Reimbursement	211,675.80	
250 Unemployment Compensation	177,035.37	
260 Workers' Compensation	318,828.59	
270 Group Insurance – Self-Insurance	5,738,080.62	
290 Other Current Employee Benefits	6,720.00	
Total Personnel Services – Employee Benefits	\$16,260,813.32	
300 <u>Purchased Professional and Technical Services</u>		
322 Professional Educational Services – Ius	979,652.36	
323 Professional Educational Services – Other Educational Agencies	1,684.00	
329 Professional Educational Services – Other	1,859,922.30	
330 Other Professional Services	1,414,568.57	
340 Technical Services	22,361.28	
Total Purchased Professional and Technical Services	\$4,278,188.51	
400 <u>Purchased Property Services</u>		
430 Repairs and Maintenance Services	29,408.12	
440 Rentals	198,951.28	
Total Purchased Property Services	\$228,359.40	
500 <u>Other Purchased Services</u>		
510 Student Transportation Services	53,825.00	
530 Communications	160.00	
550 Printing and Binding	11,550.58	
561 Tuition To Other School Districts Within the State	400,422.38	
562 Tuition To Pennsylvania Charter Schools	1,268,279.48	
564 Tuition To Career and Technology Centers	1,323,675.69	
566 Tuition To Institutions of Higher Education and Technical Institutes	2,535.00	
567 Tuition To Approved Private Schools (APS) and PA Chartered Schools for the Deaf and Blind	287,679.16	
568 Tuition To Private Residential Rehabilitative Institutions (PRRI) [In-State] and Detention Centers	213,634.86	
580 Travel	6,887.94	
Total Other Purchased Services	\$3,568,650.09	
600 <u>Supplies</u>		
610 General Supplies	513,289.05	
620 Energy	1,093.38	
630 Food	1,605.78	
640 Books and Periodicals	259,893.50	
650 Supplies & Fees – Technology Related	199,701.49	
Total Supplies	\$975,583.20	

LEA : 123465303 Methacton SD

Printed 10/27/2016 10:25:46 AM

General Fund (10)		
1000 Instruction		<u>Total</u>
700 <u>Property</u>		
750 Equipment – Original and Additional	24,686.38	
760 Equipment – Replacement	5,112.75	
Total Property	\$29,799.13	
800 <u>Other Objects</u>		
810 Dues and Fees	4,682.53	
820 Claims and Judgments Against the LEA	281,650.03	
Total Other Objects	\$286,332.56	
Total 1000 Instruction	\$54,915,989.34	

LEA : 123465303 Methacton SD

Printed 10/27/2016 10:25:46 AM

General Fund (10)

1100 Regular Programs – Elementary / Secondary

	Elementary	Secondary	Federal	Total
100 <u>Personnel Services – Salaries</u>				
100 Personnel Services – Salaries	11,440,186.51	10,306,704.84	123,035.44	21,869,926.79
Total Personnel Services – Salaries	\$11,440,186.51	\$10,306,704.84	\$123,035.44	\$21,869,926.79
200 <u>Personnel Services – Employee Benefits</u>				
210 Group Insurance – Contracted Provider	24,234.54	22,370.34	57.00	46,661.88
220 Social Security Contributions	840,469.29	760,452.37	9,066.02	1,609,987.68
230 PSERS Retirement Contributions	2,971,120.15	2,666,782.17	31,702.15	5,669,604.47
240 Tuition Reimbursement	94,420.60	117,255.20		211,675.80
250 Unemployment Compensation	177,035.37			177,035.37
260 Workers' Compensation	117,909.51	117,909.51		235,819.02
270 Group Insurance – Self-Insurance	2,200,297.05	2,031,043.43	12,972.00	4,244,312.48
290 Other Current Employee Benefits	6,720.00			6,720.00
Total Personnel Services – Employee Benefits	\$6,432,206.51	\$5,715,813.02	\$53,797.17	\$12,201,816.70
300 <u>Purchased Professional and Technical Services</u>				
322 Professional Educational Services – Ius	154,830.51	177,786.74		332,617.25
323 Professional Educational Services – Other Educational Agencies		1,344.00		1,344.00
329 Professional Educational Services – Other	837,646.33	537,710.10	3,580.53	1,378,936.96
330 Other Professional Services	5,328.65	6,412.68	576.80	12,318.13
Total Purchased Professional and Technical Services	\$997,805.49	\$723,253.52	\$4,157.33	\$1,725,216.34
400 <u>Purchased Property Services</u>				
430 Repairs and Maintenance Services	8,125.09	20,059.13		28,184.22
440 Rentals	191,120.00			191,120.00
Total Purchased Property Services	\$199,245.09	\$20,059.13		\$219,304.22
500 <u>Other Purchased Services</u>				
561 Tuition To Other School Districts Within the State		7,717.60		7,717.60
562 Tuition To Pennsylvania Charter Schools	419,667.55	387,385.43		807,052.98
568 Tuition To Private Residential Rehabilitative Institutions (PRRI) [In-State] and Detention Centers		6,189.75		6,189.75
580 Travel	334.58	2,201.10	737.65	3,273.33
Total Other Purchased Services	\$420,002.13	\$403,493.88	\$737.65	\$824,233.66
600 <u>Supplies</u>				
610 General Supplies	199,883.81	241,975.09	12,703.64	454,562.54
630 Food	355.31	350.47		705.78
640 Books and Periodicals	147,042.12	90,330.08	676.54	238,048.74
650 Supplies & Fees – Technology Related	101,461.09	93,656.40		195,117.49
Total Supplies	\$448,742.33	\$426,312.04	\$13,380.18	\$888,434.55
700 <u>Property</u>				
750 Equipment – Original and Additional	9,357.00	15,329.38		24,686.38
760 Equipment – Replacement		5,112.75		5,112.75
Total Property	\$9,357.00	\$20,442.13		\$29,799.13
800 <u>Other Objects</u>				
810 Dues and Fees		4,044.98		4,044.98

LEA : 123465303 Methacton SD

Printed 10/27/2016 10:25:46 AM

General Fund (10)

1100 Regular Programs – Elementary / Secondary	<u>Elementary</u>	<u>Secondary</u>	<u>Federal</u>	<u>Total</u>
Total Other Objects		\$4,044.98		\$4,044.98
Total 1100 Regular Programs – Elementary / Secondary	\$19,947,545.06	\$17,620,123.54	\$195,107.77	\$37,762,776.37

LEA : 123465303 Methacton SD

Printed 10/27/2016 10:25:46 AM

General Fund (10)

1110 Regular Programs

	Elementary	Secondary	Federal	Total
100 <u>Personnel Services – Salaries</u>				
100 Personnel Services – Salaries	11,440,186.51	10,306,704.84	20,840.44	21,767,731.79
Total Personnel Services – Salaries	\$11,440,186.51	\$10,306,704.84	\$20,840.44	\$21,767,731.79
200 <u>Personnel Services – Employee Benefits</u>				
210 Group Insurance – Contracted Provider	24,234.54	22,370.34		46,604.88
220 Social Security Contributions	840,469.29	760,452.37	1,469.97	1,602,391.63
230 PSERS Retirement Contributions	2,971,120.15	2,666,782.17	5,385.25	5,643,287.57
240 Tuition Reimbursement	94,420.60	117,255.20		211,675.80
250 Unemployment Compensation	177,035.37			177,035.37
260 Workers' Compensation	117,909.51	117,909.51		235,819.02
270 Group Insurance – Self-Insurance	2,200,297.05	2,031,043.43		4,231,340.48
290 Other Current Employee Benefits	6,720.00			6,720.00
Total Personnel Services – Employee Benefits	\$6,432,206.51	\$5,715,813.02	\$6,855.22	\$12,154,874.75
300 <u>Purchased Professional and Technical Services</u>				
322 Professional Educational Services – Ius	154,830.51	177,786.74		332,617.25
323 Professional Educational Services – Other Educational Agencies		1,344.00		1,344.00
329 Professional Educational Services – Other	837,646.33	537,710.10		1,375,356.43
330 Other Professional Services	5,328.65	6,412.68	576.80	12,318.13
Total Purchased Professional and Technical Services	\$997,805.49	\$723,253.52	\$576.80	\$1,721,635.81
400 <u>Purchased Property Services</u>				
430 Repairs and Maintenance Services	8,125.09	20,059.13		28,184.22
440 Rentals	191,120.00			191,120.00
Total Purchased Property Services	\$199,245.09	\$20,059.13		\$219,304.22
500 <u>Other Purchased Services</u>				
561 Tuition To Other School Districts Within the State		7,717.60		7,717.60
562 Tuition To Pennsylvania Charter Schools	419,667.55	387,385.43		807,052.98
568 Tuition To Private Residential Rehabilitative Institutions (PRRI) [In-State] and Detention Centers		6,189.75		6,189.75
580 Travel	334.58	2,201.10	737.65	3,273.33
Total Other Purchased Services	\$420,002.13	\$403,493.88	\$737.65	\$824,233.66
600 <u>Supplies</u>				
610 General Supplies	199,883.81	241,975.09	4,537.27	446,396.17
630 Food	355.31	350.47		705.78
640 Books and Periodicals	147,042.12	90,330.08	676.54	238,048.74
650 Supplies & Fees – Technology Related	101,461.09	93,656.40		195,117.49
Total Supplies	\$448,742.33	\$426,312.04	\$5,213.81	\$880,268.18
700 <u>Property</u>				
750 Equipment – Original and Additional	9,357.00	15,329.38		24,686.38
760 Equipment – Replacement		5,112.75		5,112.75
Total Property	\$9,357.00	\$20,442.13		\$29,799.13
800 <u>Other Objects</u>				
810 Dues and Fees		4,044.98		4,044.98

LEA : 123465303 Methacton SD

Printed 10/27/2016 10:25:46 AM

General Fund (10)

1110 Regular Programs

	<u>Elementary</u>	<u>Secondary</u>	<u>Federal</u>	<u>Total</u>
Total Other Objects		\$4,044.98		\$4,044.98
Total 1110 Regular Programs	\$19,947,545.06	\$17,620,123.54	\$34,223.92	\$37,601,892.52

LEA : 123465303 Methacton SD

Printed 10/27/2016 10:25:46 AM

General Fund (10)				
1190 Federally-Funded Regular Programs	<u>Elementary</u>	<u>Secondary</u>	<u>Federal</u>	<u>Total</u>
100 <u>Personnel Services – Salaries</u>				
100 Personnel Services – Salaries			102,195.00	102,195.00
Total Personnel Services – Salaries			\$102,195.00	\$102,195.00
200 <u>Personnel Services – Employee Benefits</u>				
210 Group Insurance – Contracted Provider			57.00	57.00
220 Social Security Contributions			7,596.05	7,596.05
230 PSERS Retirement Contributions			26,316.90	26,316.90
270 Group Insurance – Self-Insurance			12,972.00	12,972.00
Total Personnel Services – Employee Benefits			\$46,941.95	\$46,941.95
300 <u>Purchased Professional and Technical Services</u>				
329 Professional Educational Services – Other			3,580.53	3,580.53
Total Purchased Professional and Technical Services			\$3,580.53	\$3,580.53
600 <u>Supplies</u>				
610 General Supplies			8,166.37	8,166.37
Total Supplies			\$8,166.37	\$8,166.37
Total 1190 Federally-Funded Regular Programs			\$160,883.85	\$160,883.85

LEA : 123465303 Methacton SD

Printed 10/27/2016 10:25:46 AM

General Fund (10)				
1200 Special Programs – Elementary / Secondary	<u>Elementary</u>	<u>Secondary</u>	<u>Federal</u>	<u>Total</u>
100 <u>Personnel Services – Salaries</u>				
100 Personnel Services – Salaries	3,218,950.55	2,383,025.41	886,671.84	6,488,647.80
Total Personnel Services – Salaries	\$3,218,950.55	\$2,383,025.41	\$886,671.84	\$6,488,647.80
200 <u>Personnel Services – Employee Benefits</u>				
210 Group Insurance – Contracted Provider	7,480.42	6,905.00		14,385.42
220 Social Security Contributions	270,650.31	204,049.76		474,700.07
230 PSERS Retirement Contributions	973,046.48	714,729.20		1,687,775.68
260 Workers' Compensation	36,532.75	36,532.75		73,065.50
270 Group Insurance – Self-Insurance	683,695.66	631,103.68		1,314,799.34
Total Personnel Services – Employee Benefits	\$1,971,405.62	\$1,593,320.39		\$3,564,726.01
300 <u>Purchased Professional and Technical Services</u>				
322 Professional Educational Services – lus	187,457.79	456,061.20	1,410.00	644,928.99
323 Professional Educational Services – Other Educational Agencies		340.00		340.00
329 Professional Educational Services – Other	241,910.20	232,876.58		474,786.78
330 Other Professional Services	940,428.17	342,949.47	16,311.23	1,299,688.87
340 Technical Services	11,627.87	10,733.41		22,361.28
Total Purchased Professional and Technical Services	\$1,381,424.03	\$1,042,960.66	\$17,721.23	\$2,442,105.92
500 <u>Other Purchased Services</u>				
510 Student Transportation Services		53,825.00		53,825.00
561 Tuition To Other School Districts Within the State		249,352.63		249,352.63
562 Tuition To Pennsylvania Charter Schools	239,837.78	221,388.72		461,226.50
564 Tuition To Career and Technology Centers		4,793.88		4,793.88
566 Tuition To Institutions of Higher Education and Technical Institutes		2,535.00		2,535.00
567 Tuition To Approved Private Schools (APS) and PA Chartered Schools for the Deaf and Blind	134,391.31	153,287.85		287,679.16
568 Tuition To Private Residential Rehabilitative Institutions (PRRI) [In-State] and Detention Centers	3,875.71	198,901.33		202,777.04
580 Travel	1,494.74	2,044.28		3,539.02
Total Other Purchased Services	\$379,599.54	\$886,128.69		\$1,265,728.23
600 <u>Supplies</u>				
610 General Supplies	20,675.10	14,559.53		35,234.63
640 Books and Periodicals	16,419.68	5,360.77		21,780.45
650 Supplies & Fees – Technology Related			4,584.00	4,584.00
Total Supplies	\$37,094.78	\$19,920.30	\$4,584.00	\$61,599.08
800 <u>Other Objects</u>				
820 Claims and Judgments Against the LEA	111,007.12	170,642.91		281,650.03
Total Other Objects	\$111,007.12	\$170,642.91		\$281,650.03
Total 1200 Special Programs – Elementary / Secondary	\$7,099,481.64	\$6,095,998.36	\$908,977.07	\$14,104,457.07

LEA : 123465303 Methacton SD

Printed 10/27/2016 10:25:46 AM

General Fund (10)				
1210 Life Skills Support	<u>Elementary</u>	<u>Secondary</u>	<u>Federal</u>	<u>Total</u>
100 <u>Personnel Services – Salaries</u>				
100 Personnel Services – Salaries	3,162.04	305,000.88	48,435.50	356,598.42
Total Personnel Services – Salaries	\$3,162.04	\$305,000.88	\$48,435.50	\$356,598.42
200 <u>Personnel Services – Employee Benefits</u>				
220 Social Security Contributions	3,890.36	21,979.69		25,870.05
230 PSERS Retirement Contributions	12,593.12	78,156.49		90,749.61
Total Personnel Services – Employee Benefits	\$16,483.48	\$100,136.18		\$116,619.66
300 <u>Purchased Professional and Technical Services</u>				
322 Professional Educational Services – Ius	335.88	180,444.20		180,780.08
329 Professional Educational Services – Other	181,037.48	128,757.78		309,795.26
Total Purchased Professional and Technical Services	\$181,373.36	\$309,201.98		\$490,575.34
500 <u>Other Purchased Services</u>				
561 Tuition To Other School Districts Within the State		75,115.00		75,115.00
564 Tuition To Career and Technology Centers		4,793.88		4,793.88
Total Other Purchased Services		\$79,908.88		\$79,908.88
600 <u>Supplies</u>				
610 General Supplies	(27.48)	1,509.78		1,482.30
Total Supplies	(\$27.48)	\$1,509.78		\$1,482.30
Total 1210 Life Skills Support	\$200,991.40	\$795,757.70	\$48,435.50	\$1,045,184.60

LEA : 123465303 Methacton SD

Printed 10/27/2016 10:25:46 AM

General Fund (10)				
1220 Sensory Support	<u>Elementary</u>	<u>Secondary</u>	<u>Federal</u>	<u>Total</u>
100 <u>Personnel Services – Salaries</u>				
100 Personnel Services – Salaries	333,384.82	168,662.66		502,047.48
Total Personnel Services – Salaries	\$333,384.82	\$168,662.66		\$502,047.48
200 <u>Personnel Services – Employee Benefits</u>				
220 Social Security Contributions	24,792.52	12,620.30		37,412.82
230 PSERS Retirement Contributions	86,796.07	43,582.44		130,378.51
Total Personnel Services – Employee Benefits	\$111,588.59	\$56,202.74		\$167,791.33
300 <u>Purchased Professional and Technical Services</u>				
322 Professional Educational Services – Ius	63,905.48	115,293.66		179,199.14
330 Other Professional Services		97,953.08		97,953.08
Total Purchased Professional and Technical Services	\$63,905.48	\$213,246.74		\$277,152.22
500 <u>Other Purchased Services</u>				
561 Tuition To Other School Districts Within the State		73,020.50		73,020.50
Total Other Purchased Services		\$73,020.50		\$73,020.50
600 <u>Supplies</u>				
610 General Supplies	2,162.49	96.04		2,258.53
Total Supplies	\$2,162.49	\$96.04		\$2,258.53
Total 1220 Sensory Support	\$511,041.38	\$511,228.68		\$1,022,270.06

LEA : 123465303 Methacton SD

Printed 10/27/2016 10:25:46 AM

General Fund (10)

1230 Emotional Support

	Elementary	Secondary	Federal	Total
100 <u>Personnel Services – Salaries</u>				
100 Personnel Services – Salaries	669,622.18	534,683.07	213,190.88	1,417,496.13
Total Personnel Services – Salaries	\$669,622.18	\$534,683.07	\$213,190.88	\$1,417,496.13
200 <u>Personnel Services – Employee Benefits</u>				
220 Social Security Contributions	59,715.69	44,056.01		103,771.70
230 PSERS Retirement Contributions	211,112.73	153,897.69		365,010.42
Total Personnel Services – Employee Benefits	\$270,828.42	\$197,953.70		\$468,782.12
300 <u>Purchased Professional and Technical Services</u>				
322 Professional Educational Services – Ius	1,469.88	133,347.34		134,817.22
323 Professional Educational Services – Other Educational Agencies		340.00		340.00
329 Professional Educational Services – Other	43,737.52	85,207.84		128,945.36
330 Other Professional Services	937,615.67	244,546.39		1,182,162.06
Total Purchased Professional and Technical Services	\$982,823.07	\$463,441.57		\$1,446,264.64
500 <u>Other Purchased Services</u>				
561 Tuition To Other School Districts Within the State		101,217.13		101,217.13
568 Tuition To Private Residential Rehabilitative Institutions (PRRI) [In-State] and Detention Centers		180,071.60		180,071.60
580 Travel	1,124.81			1,124.81
Total Other Purchased Services	\$1,124.81	\$281,288.73		\$282,413.54
600 <u>Supplies</u>				
610 General Supplies	6,272.00	5,418.23		11,690.23
640 Books and Periodicals	2,215.89	3,868.82		6,084.71
Total Supplies	\$8,487.89	\$9,287.05		\$17,774.94
800 <u>Other Objects</u>				
820 Claims and Judgments Against the LEA	98,129.66			98,129.66
Total Other Objects	\$98,129.66			\$98,129.66
Total 1230 Emotional Support	\$2,031,016.03	\$1,486,654.12	\$213,190.88	\$3,730,861.03

LEA : 123465303 Methacton SD

Printed 10/27/2016 10:25:46 AM

General Fund (10)

1240 Academic Support

	Elementary	Secondary	Federal	Total
100 <u>Personnel Services – Salaries</u>				
100 Personnel Services – Salaries	1,641,616.78	865,532.96	569,897.04	3,077,046.78
Total Personnel Services – Salaries	\$1,641,616.78	\$865,532.96	\$569,897.04	\$3,077,046.78
200 <u>Personnel Services – Employee Benefits</u>				
210 Group Insurance – Contracted Provider	7,480.42	6,905.00		14,385.42
220 Social Security Contributions	140,996.29	83,480.11		224,476.40
230 PSERS Retirement Contributions	514,132.91	293,459.33		807,592.24
260 Workers' Compensation	36,532.75	36,532.75		73,065.50
270 Group Insurance – Self-Insurance	683,695.66	631,103.68		1,314,799.34
Total Personnel Services – Employee Benefits	\$1,382,838.03	\$1,051,480.87		\$2,434,318.90
300 <u>Purchased Professional and Technical Services</u>				
322 Professional Educational Services – Ius	2,594.68	26,976.00	1,410.00	30,980.68
329 Professional Educational Services – Other	10,026.62	12,349.20		22,375.82
330 Other Professional Services	2,812.50	450.00		3,262.50
Total Purchased Professional and Technical Services	\$15,433.80	\$39,775.20	\$1,410.00	\$56,619.00
500 <u>Other Purchased Services</u>				
510 Student Transportation Services		53,825.00		53,825.00
562 Tuition To Pennsylvania Charter Schools	239,837.78	221,388.72		461,226.50
566 Tuition To Institutions of Higher Education and Technical Institutes		2,535.00		2,535.00
568 Tuition To Private Residential Rehabilitative Institutions (PRRI) [In-State] and Detention Centers		15,252.15		15,252.15
580 Travel	369.93	2,044.28		2,414.21
Total Other Purchased Services	\$240,207.71	\$295,045.15		\$535,252.86
600 <u>Supplies</u>				
610 General Supplies	12,268.09	2,508.48		14,776.57
640 Books and Periodicals	14,203.79	1,491.95		15,695.74
Total Supplies	\$26,471.88	\$4,000.43		\$30,472.31
800 <u>Other Objects</u>				
820 Claims and Judgments Against the LEA	12,877.46	74,627.91		87,505.37
Total Other Objects	\$12,877.46	\$74,627.91		\$87,505.37
Total 1240 Academic Support	\$3,319,445.66	\$2,330,462.52	\$571,307.04	\$6,221,215.22

LEA : 123465303 Methacton SD

Printed 10/27/2016 10:25:46 AM

General Fund (10)

1241 Learning Support – Public	Elementary	Secondary	Federal	Total
100 <u>Personnel Services – Salaries</u>				
100 Personnel Services – Salaries	1,169,020.13	597,647.39	569,897.04	2,336,564.56
Total Personnel Services – Salaries	\$1,169,020.13	\$597,647.39	\$569,897.04	\$2,336,564.56
200 <u>Personnel Services – Employee Benefits</u>				
210 Group Insurance – Contracted Provider	7,480.42	6,905.00		14,385.42
220 Social Security Contributions	106,411.78	63,558.28		169,970.06
230 PSERS Retirement Contributions	390,455.28	224,259.70		614,714.98
260 Workers' Compensation	36,532.75	36,532.75		73,065.50
270 Group Insurance – Self-Insurance	683,695.66	631,103.68		1,314,799.34
Total Personnel Services – Employee Benefits	\$1,224,575.89	\$962,359.41		\$2,186,935.30
300 <u>Purchased Professional and Technical Services</u>				
322 Professional Educational Services – Ius	2,594.68	26,976.00	1,410.00	30,980.68
329 Professional Educational Services – Other	10,026.62	12,349.20		22,375.82
330 Other Professional Services	2,812.50	450.00		3,262.50
Total Purchased Professional and Technical Services	\$15,433.80	\$39,775.20	\$1,410.00	\$56,619.00
500 <u>Other Purchased Services</u>				
510 Student Transportation Services		53,825.00		53,825.00
562 Tuition To Pennsylvania Charter Schools	239,837.78	221,388.72		461,226.50
566 Tuition To Institutions of Higher Education and Technical Institutes		2,535.00		2,535.00
568 Tuition To Private Residential Rehabilitative Institutions (PRRI) [In-State] and Detention Centers		15,252.15		15,252.15
580 Travel	184.69	960.08		1,144.77
Total Other Purchased Services	\$240,022.47	\$293,960.95		\$533,983.42
600 <u>Supplies</u>				
610 General Supplies	10,196.55	2,462.48		12,659.03
640 Books and Periodicals	14,203.79	981.61		15,185.40
Total Supplies	\$24,400.34	\$3,444.09		\$27,844.43
800 <u>Other Objects</u>				
820 Claims and Judgments Against the LEA	12,877.46	74,627.91		87,505.37
Total Other Objects	\$12,877.46	\$74,627.91		\$87,505.37
Total 1241 Learning Support – Public	\$2,686,330.09	\$1,971,814.95	\$571,307.04	\$5,229,452.08

LEA : 123465303 Methacton SD

Printed 10/27/2016 10:25:46 AM

General Fund (10)				
1243 Gifted Support	<u>Elementary</u>	<u>Secondary</u>	<u>Federal</u>	<u>Total</u>
100 <u>Personnel Services – Salaries</u>				
100 Personnel Services – Salaries	472,596.65	267,885.57		740,482.22
Total Personnel Services – Salaries	\$472,596.65	\$267,885.57		\$740,482.22
200 <u>Personnel Services – Employee Benefits</u>				
220 Social Security Contributions	34,584.51	19,921.83		54,506.34
230 PSERS Retirement Contributions	123,677.63	69,199.63		192,877.26
Total Personnel Services – Employee Benefits	\$158,262.14	\$89,121.46		\$247,383.60
500 <u>Other Purchased Services</u>				
580 Travel	185.24	1,084.20		1,269.44
Total Other Purchased Services	\$185.24	\$1,084.20		\$1,269.44
600 <u>Supplies</u>				
610 General Supplies	2,071.54	46.00		2,117.54
640 Books and Periodicals		510.34		510.34
Total Supplies	\$2,071.54	\$556.34		\$2,627.88
Total 1243 Gifted Support	\$633,115.57	\$358,647.57		\$991,763.14

LEA : 123465303 Methacton SD

Printed 10/27/2016 10:25:46 AM

General Fund (10)

1260 Physical Support

300 Purchased Professional and Technical Services

	<u>Elementary</u>	<u>Secondary</u>	<u>Federal</u>	<u>Total</u>
330 Other Professional Services			16,311.23	16,311.23
Total Purchased Professional and Technical Services			\$16,311.23	\$16,311.23
Total 1260 Physical Support			\$16,311.23	\$16,311.23

LEA : 123465303 Methacton SD

Printed 10/27/2016 10:25:46 AM

General Fund (10)				
1270 Multi-Handicapped Support	<u>Elementary</u>	<u>Secondary</u>	<u>Federal</u>	<u>Total</u>
300 <u>Purchased Professional and Technical Services</u>				
322 Professional Educational Services – Ius	84,368.66			84,368.66
Total Purchased Professional and Technical Services	\$84,368.66			\$84,368.66
500 <u>Other Purchased Services</u>				
567 Tuition To Approved Private Schools (APS) and PA Chartered Schools for the Deaf and Blind		10,380.00		10,380.00
Total Other Purchased Services		\$10,380.00		\$10,380.00
600 <u>Supplies</u>				
610 General Supplies		5,027.00		5,027.00
Total Supplies		\$5,027.00		\$5,027.00
800 <u>Other Objects</u>				
820 Claims and Judgments Against the LEA		96,015.00		96,015.00
Total Other Objects		\$96,015.00		\$96,015.00
Total 1270 Multi-Handicapped Support	\$84,368.66	\$111,422.00		\$195,790.66

LEA : 123465303 Methacton SD

Printed 10/27/2016 10:25:46 AM

General Fund (10)

1280 Early Intervention Support	<u>Elementary</u>	<u>Secondary</u>	<u>Federal</u>	<u>Total</u>
300 <u>Purchased Professional and Technical Services</u>				
322 Professional Educational Services – lus	34,783.21			34,783.21
Total Purchased Professional and Technical Services	\$34,783.21			\$34,783.21
600 <u>Supplies</u>				
650 Supplies & Fees – Technology Related			4,584.00	4,584.00
Total Supplies			\$4,584.00	\$4,584.00
Total 1280 Early Intervention Support	\$34,783.21		\$4,584.00	\$39,367.21

LEA : 123465303 Methacton SD

Printed 10/27/2016 10:25:46 AM

General Fund (10)				
1290 Special Programs - Other Support	<u>Elementary</u>	<u>Secondary</u>	<u>Federal</u>	<u>Total</u>
100 <u>Personnel Services – Salaries</u>				
100 Personnel Services – Salaries	571,164.73	509,145.84	55,148.42	1,135,458.99
Total Personnel Services – Salaries	\$571,164.73	\$509,145.84	\$55,148.42	\$1,135,458.99
200 <u>Personnel Services – Employee Benefits</u>				
220 Social Security Contributions	41,255.45	41,913.65		83,169.10
230 PSERS Retirement Contributions	148,411.65	145,633.25		294,044.90
Total Personnel Services – Employee Benefits	\$189,667.10	\$187,546.90		\$377,214.00
300 <u>Purchased Professional and Technical Services</u>				
329 Professional Educational Services – Other	7,108.58	6,561.76		13,670.34
340 Technical Services	11,627.87	10,733.41		22,361.28
Total Purchased Professional and Technical Services	\$18,736.45	\$17,295.17		\$36,031.62
500 <u>Other Purchased Services</u>				
567 Tuition To Approved Private Schools (APS) and PA Chartered Schools for the Deaf and Blind	134,391.31	142,907.85		277,299.16
568 Tuition To Private Residential Rehabilitative Institutions (PRRI) [In-State] and Detention Centers	3,875.71	3,577.58		7,453.29
Total Other Purchased Services	\$138,267.02	\$146,485.43		\$284,752.45
Total 1290 Special Programs - Other Support	\$917,835.30	\$860,473.34	\$55,148.42	\$1,833,457.06

LEA : 123465303 Methacton SD

Printed 10/27/2016 10:25:46 AM

General Fund (10)

1300 Vocational Education

	Elementary	Secondary	Federal	Total
100 Personnel Services – Salaries				
100 Personnel Services – Salaries		781,198.18		781,198.18
Total Personnel Services – Salaries		\$781,198.18		\$781,198.18
200 Personnel Services – Employee Benefits				
210 Group Insurance – Contracted Provider		1,695.79		1,695.79
220 Social Security Contributions		57,588.23		57,588.23
230 PSERS Retirement Contributions		201,052.47		201,052.47
260 Workers' Compensation		8,613.15		8,613.15
270 Group Insurance – Self-Insurance		155,015.60		155,015.60
Total Personnel Services – Employee Benefits		\$423,965.24		\$423,965.24
400 Purchased Property Services				
430 Repairs and Maintenance Services		1,198.95		1,198.95
Total Purchased Property Services		\$1,198.95		\$1,198.95
500 Other Purchased Services				
564 Tuition To Career and Technology Centers		1,318,881.81		1,318,881.81
580 Travel		75.59		75.59
Total Other Purchased Services		\$1,318,957.40		\$1,318,957.40
600 Supplies				
610 General Supplies		20,527.09		20,527.09
640 Books and Periodicals		64.31		64.31
Total Supplies		\$20,591.40		\$20,591.40
Total 1300 Vocational Education		\$2,545,911.17		\$2,545,911.17

LEA : 123465303 Methacton SD

Printed 10/27/2016 10:25:46 AM

General Fund (10)				
1400 Other Instructional Programs – Elementary / Secondary	<u>Elementary</u>	<u>Secondary</u>	<u>Federal</u>	<u>Total</u>
100 <u>Personnel Services – Salaries</u>				
100 Personnel Services – Salaries		124,399.60		124,399.60
Total Personnel Services – Salaries		\$124,399.60		\$124,399.60
200 <u>Personnel Services – Employee Benefits</u>				
210 Group Insurance – Contracted Provider		262.04		262.04
220 Social Security Contributions		9,319.22		9,319.22
230 PSERS Retirement Contributions		30,585.50		30,585.50
260 Workers' Compensation		1,330.92		1,330.92
270 Group Insurance – Self-Insurance		23,953.20		23,953.20
Total Personnel Services – Employee Benefits		\$65,450.88		\$65,450.88
300 <u>Purchased Professional and Technical Services</u>				
329 Professional Educational Services – Other		6,198.56		6,198.56
Total Purchased Professional and Technical Services		\$6,198.56		\$6,198.56
400 <u>Purchased Property Services</u>				
430 Repairs and Maintenance Services		24.95		24.95
440 Rentals		6,381.28		6,381.28
Total Purchased Property Services		\$6,406.23		\$6,406.23
500 <u>Other Purchased Services</u>				
561 Tuition To Other School Districts Within the State	74,543.12	68,809.03		143,352.15
568 Tuition To Private Residential Rehabilitative Institutions (PRRI) [In-State] and Detention Centers		4,668.07		4,668.07
Total Other Purchased Services	\$74,543.12	\$73,477.10		\$148,020.22
600 <u>Supplies</u>				
610 General Supplies		125.00		125.00
620 Energy		1,093.38		1,093.38
Total Supplies		\$1,218.38		\$1,218.38
800 <u>Other Objects</u>				
810 Dues and Fees		36.00		36.00
Total Other Objects		\$36.00		\$36.00
Total 1400 Other Instructional Programs – Elementary / Secondary	\$74,543.12	\$277,186.75		\$351,729.87

LEA : 123465303 Methacton SD

Printed 10/27/2016 10:25:46 AM

General Fund (10)				
1410 Drivers' Education	<u>Elementary</u>	<u>Secondary</u>	<u>Federal</u>	<u>Total</u>
100 <u>Personnel Services – Salaries</u>				
100 Personnel Services – Salaries		109,998.79		109,998.79
Total Personnel Services – Salaries		\$109,998.79		\$109,998.79
200 <u>Personnel Services – Employee Benefits</u>				
210 Group Insurance – Contracted Provider		262.04		262.04
220 Social Security Contributions		8,217.57		8,217.57
230 PSERS Retirement Contributions		26,864.33		26,864.33
260 Workers' Compensation		1,330.92		1,330.92
270 Group Insurance – Self-Insurance		23,953.20		23,953.20
Total Personnel Services – Employee Benefits		\$60,628.06		\$60,628.06
400 <u>Purchased Property Services</u>				
430 Repairs and Maintenance Services		24.95		24.95
440 Rentals		6,381.28		6,381.28
Total Purchased Property Services		\$6,406.23		\$6,406.23
600 <u>Supplies</u>				
610 General Supplies		125.00		125.00
620 Energy		1,093.38		1,093.38
Total Supplies		\$1,218.38		\$1,218.38
800 <u>Other Objects</u>				
810 Dues and Fees		36.00		36.00
Total Other Objects		\$36.00		\$36.00
Total 1410 Drivers' Education		\$178,287.46		\$178,287.46

LEA : 123465303 Methacton SD

Printed 10/27/2016 10:25:46 AM

General Fund (10)

1420 Summer School

	<u>Elementary</u>	<u>Secondary</u>	<u>Federal</u>	<u>Total</u>
100 <u>Personnel Services – Salaries</u>				
100 Personnel Services – Salaries		8,344.21		8,344.21
Total Personnel Services – Salaries		\$8,344.21		\$8,344.21
200 <u>Personnel Services – Employee Benefits</u>				
220 Social Security Contributions		638.33		638.33
230 PSERS Retirement Contributions		2,156.14		2,156.14
Total Personnel Services – Employee Benefits		\$2,794.47		\$2,794.47
300 <u>Purchased Professional and Technical Services</u>				
329 Professional Educational Services – Other		1,369.32		1,369.32
Total Purchased Professional and Technical Services		\$1,369.32		\$1,369.32
Total 1420 Summer School		\$12,508.00		\$12,508.00

LEA : 123465303 Methacton SD

Printed 10/27/2016 10:25:46 AM

General Fund (10)

1430 Homebound Instruction	<u>Elementary</u>	<u>Secondary</u>	<u>Federal</u>	<u>Total</u>
100 <u>Personnel Services – Salaries</u>				
100 Personnel Services – Salaries		6,056.60		6,056.60
Total Personnel Services – Salaries		\$6,056.60		\$6,056.60
200 <u>Personnel Services – Employee Benefits</u>				
220 Social Security Contributions		463.32		463.32
230 PSERS Retirement Contributions		1,565.03		1,565.03
Total Personnel Services – Employee Benefits		\$2,028.35		\$2,028.35
300 <u>Purchased Professional and Technical Services</u>				
329 Professional Educational Services – Other		4,829.24		4,829.24
Total Purchased Professional and Technical Services		\$4,829.24		\$4,829.24
Total 1430 Homebound Instruction		\$12,914.19		\$12,914.19

LEA : 123465303 Methacton SD

Printed 10/27/2016 10:25:46 AM

General Fund (10)

1440 Alternative Regular Education Programs

	<u>Elementary</u>	<u>Secondary</u>	<u>Federal</u>	<u>Total</u>
500 Other Purchased Services				
561 Tuition To Other School Districts Within the State	74,543.12	68,809.03		143,352.15
568 Tuition To Private Residential Rehabilitative Institutions (PRRI) [In-State] and Detention Centers		4,668.07		4,668.07
Total Other Purchased Services	\$74,543.12	\$73,477.10		\$148,020.22
Total 1440 Alternative Regular Education Programs	\$74,543.12	\$73,477.10		\$148,020.22

LEA : 123465303 Methacton SD

Printed 10/27/2016 10:25:46 AM

General Fund (10)

1441 Adjudicated / Court-Placed Programs	<u>Elementary</u>	<u>Secondary</u>	<u>Federal</u>	<u>Total</u>
500 <u>Other Purchased Services</u>				
561 Tuition To Other School Districts Within the State	74,543.12	68,809.03		143,352.15
568 Tuition To Private Residential Rehabilitative Institutions (PRRI) [In-State] and Detention Centers		4,668.07		4,668.07
Total Other Purchased Services	\$74,543.12	\$73,477.10		\$148,020.22
Total 1441 Adjudicated / Court-Placed Programs	\$74,543.12	\$73,477.10		\$148,020.22

LEA : 123465303 Methacton SD

Printed 10/27/2016 10:25:46 AM

General Fund (10)

1500 Nonpublic School Programs

<u>Elementary</u>	<u>Secondary</u>	<u>Federal</u>	<u>Total</u>
-------------------	------------------	----------------	--------------

300 Purchased Professional and Technical Services

322 Professional Educational Services – lus		2,106.12	2,106.12
---	--	----------	----------

Total Purchased Professional and Technical Services		\$2,106.12	\$2,106.12
--	--	-------------------	-------------------

Total 1500 Nonpublic School Programs		\$2,106.12	\$2,106.12
---	--	-------------------	-------------------

LEA : 123465303 Methacton SD

Printed 10/27/2016 10:25:46 AM

General Fund (10)				
1600 Adult Education Programs	<u>Elementary</u>	<u>Secondary</u>	<u>Federal</u>	<u>Total</u>
100 <u>Personnel Services – Salaries</u>				
100 Personnel Services – Salaries				24,090.76
Total Personnel Services – Salaries				\$24,090.76
200 <u>Personnel Services – Employee Benefits</u>				
220 Social Security Contributions				1,843.37
230 PSERS Retirement Contributions				3,011.12
Total Personnel Services – Employee Benefits				\$4,854.49
300 <u>Purchased Professional and Technical Services</u>				
330 Other Professional Services				102,561.57
Total Purchased Professional and Technical Services				\$102,561.57
400 <u>Purchased Property Services</u>				
440 Rentals				1,450.00
Total Purchased Property Services				\$1,450.00
500 <u>Other Purchased Services</u>				
530 Communications				160.00
550 Printing and Binding				11,550.58
Total Other Purchased Services				\$11,710.58
600 <u>Supplies</u>				
610 General Supplies				2,839.79
630 Food				900.00
Total Supplies				\$3,739.79
800 <u>Other Objects</u>				
810 Dues and Fees				601.55
Total Other Objects				\$601.55
Total 1600 Adult Education Programs				\$149,008.74

LEA : 123465303 Methacton SD

Printed 10/27/2016 10:25:49 AM

General Fund (10)

2000 Support Services

Total

100	<u>Personnel Services – Salaries</u>	
100	Personnel Services – Salaries	12,348,763.88
Total Personnel Services – Salaries		\$12,348,763.88
200	<u>Personnel Services – Employee Benefits</u>	
210	Group Insurance – Contracted Provider	30,448.31
220	Social Security Contributions	899,007.45
230	PSERS Retirement Contributions	3,159,831.91
240	Tuition Reimbursement	113,817.80
260	Workers' Compensation	150,345.41
270	Group Insurance – Self-Insurance	2,744,174.04
290	Other Current Employee Benefits	26,008.26
Total Personnel Services – Employee Benefits		\$7,123,633.18
300	<u>Purchased Professional and Technical Services</u>	
310	Official / Administrative Services	130,115.32
322	Professional Educational Services – Ius	58,433.21
323	Professional Educational Services – Other Educational Agencies	39,562.78
324	Professional Educational Services – Employee Training and Development Services	2,950.00
329	Professional Educational Services – Other	1,080.00
330	Other Professional Services	1,224,632.44
340	Technical Services	16,935.21
390	Other Purchased Professional and Technical Services	286,180.89
Total Purchased Professional and Technical Services		\$1,759,889.85
400	<u>Purchased Property Services</u>	
410	Cleaning Services	157,764.98
420	Utility Services	1,318,272.73
430	Repairs and Maintenance Services	453,456.61
440	Rentals	245,428.64
450	Construction Services	(4,689.06)
460	Extermination Services	8,352.00
Total Purchased Property Services		\$2,178,585.90
500	<u>Other Purchased Services</u>	
511	Student Transportation Services from Another LEA Within the State	720.00
513	Contracted Carriers	6,165,227.89
516	Student Transportation Services From the IU	1,261.47
519	Student Transportation Services From Other Sources	3,600.00
520	Insurance – General	248,788.80
530	Communications	165,560.53
549	Other Advertising/Public Relations	19,257.18
550	Printing and Binding	27,019.37
580	Travel	44,085.17
591	Services Purchased Locally	2,041.02
595	IU Payments By Withholding	71,937.90
596	Direct Payments To Intermediate Units	5,370.00
Total Other Purchased Services		\$6,754,869.33

LEA : 123465303 Methacton SD

Printed 10/27/2016 10:25:49 AM

General Fund (10)

2000 Support Services

Total

600 <u>Supplies</u>	
610 General Supplies	786,672.32
620 Energy	230,635.12
630 Food	7,546.38
640 Books and Periodicals	51,897.59
Total Supplies	\$1,076,751.41
700 <u>Property</u>	
750 Equipment – Original and Additional	66,081.48
760 Equipment – Replacement	45,661.88
Total Property	\$111,743.36
800 <u>Other Objects</u>	
810 Dues and Fees	71,531.47
890 Miscellaneous Expenditures	(2,905.02)
Total Other Objects	\$68,626.45
Total 2000 Support Services	\$31,422,863.36

LEA : 123465303 Methacton SD

Printed 10/27/2016 10:25:49 AM

General Fund (10)

2100 Support Services – Students	Elementary	Secondary	Federal	Total
100 <u>Personnel Services – Salaries</u>				
100 Personnel Services – Salaries	993,377.64	1,230,781.31		2,352,492.31
Total Personnel Services – Salaries	\$993,377.64	\$1,230,781.31		\$2,352,492.31
200 <u>Personnel Services – Employee Benefits</u>				
210 Group Insurance – Contracted Provider	3,442.95	3,178.11		6,621.06
220 Social Security Contributions	72,963.94	90,652.29		172,891.92
230 PSERS Retirement Contributions	253,157.13	314,895.42		600,907.71
260 Workers' Compensation	16,476.46	15,209.03		31,685.49
270 Group Insurance – Self-Insurance	307,693.63	284,024.89		591,718.52
290 Other Current Employee Benefits	1,786.35	1,648.93		3,435.28
Total Personnel Services – Employee Benefits	\$655,520.46	\$709,608.67		\$1,407,259.98
300 <u>Purchased Professional and Technical Services</u>				
330 Other Professional Services		104,084.22		242,584.22
Total Purchased Professional and Technical Services		\$104,084.22		\$242,584.22
500 <u>Other Purchased Services</u>				
580 Travel	2,209.96	1,600.24		4,331.20
Total Other Purchased Services	\$2,209.96	\$1,600.24		\$4,331.20
600 <u>Supplies</u>				
610 General Supplies	9,459.39	18,777.03		28,236.42
630 Food		135.00		135.00
640 Books and Periodicals	329.55	26.09		355.64
Total Supplies	\$9,788.94	\$18,938.12		\$28,727.06
800 <u>Other Objects</u>				
810 Dues and Fees	75.40	548.70		624.10
890 Miscellaneous Expenditures		(2,905.02)		(2,905.02)
Total Other Objects	\$75.40	(\$2,356.32)		(\$2,280.92)
Total 2100 Support Services – Students	\$1,660,972.40	\$2,062,656.24		\$4,033,113.85

LEA : 123465303 Methacton SD

Printed 10/27/2016 10:25:49 AM

General Fund (10)				
2110 Supervision of Student Services	<u>Elementary</u>	<u>Secondary</u>	<u>Federal</u>	<u>Total</u>
100 <u>Personnel Services – Salaries</u>				
100 Personnel Services – Salaries	313,941.72	289,792.35		603,734.07
Total Personnel Services – Salaries	\$313,941.72	\$289,792.35		\$603,734.07
200 <u>Personnel Services – Employee Benefits</u>				
210 Group Insurance – Contracted Provider	746.27	688.86		1,435.13
220 Social Security Contributions	23,003.07	21,233.59		44,236.66
230 PSERS Retirement Contributions	79,387.89	73,281.13		152,669.02
260 Workers' Compensation	2,779.65	2,565.83		5,345.48
270 Group Insurance – Self-Insurance	61,184.78	56,478.25		117,663.03
290 Other Current Employee Benefits	1,786.35	1,648.93		3,435.28
Total Personnel Services – Employee Benefits	\$168,888.01	\$155,896.59		\$324,784.60
500 <u>Other Purchased Services</u>				
580 Travel	1,758.75	1,459.02		3,217.77
Total Other Purchased Services	\$1,758.75	\$1,459.02		\$3,217.77
600 <u>Supplies</u>				
610 General Supplies	275.33	347.87		623.20
Total Supplies	\$275.33	\$347.87		\$623.20
800 <u>Other Objects</u>				
810 Dues and Fees	75.40	284.70		360.10
Total Other Objects	\$75.40	\$284.70		\$360.10
Total 2110 Supervision of Student Services	\$484,939.21	\$447,780.53		\$932,719.74

LEA : 123465303 Methacton SD

Printed 10/27/2016 10:25:49 AM

General Fund (10)				
2111 Supervision of Student Services – Head of Component	<u>Elementary</u>	<u>Secondary</u>	<u>Federal</u>	<u>Total</u>
100 <u>Personnel Services – Salaries</u>				
100 Personnel Services – Salaries	119,526.92	110,332.54		229,859.46
Total Personnel Services – Salaries	\$119,526.92	\$110,332.54		\$229,859.46
200 <u>Personnel Services – Employee Benefits</u>				
210 Group Insurance – Contracted Provider	205.82	189.99		395.81
220 Social Security Contributions	8,504.79	7,850.57		16,355.36
230 PSERS Retirement Contributions	29,726.72	27,440.05		57,166.77
260 Workers' Compensation	1,191.28	1,099.64		2,290.92
270 Group Insurance – Self-Insurance	22,669.00	20,925.23		43,594.23
290 Other Current Employee Benefits	520.00	480.00		1,000.00
Total Personnel Services – Employee Benefits	\$62,817.61	\$57,985.48		\$120,803.09
500 <u>Other Purchased Services</u>				
580 Travel	372.27	816.28		1,188.55
Total Other Purchased Services	\$372.27	\$816.28		\$1,188.55
600 <u>Supplies</u>				
610 General Supplies	275.33	347.87		623.20
Total Supplies	\$275.33	\$347.87		\$623.20
800 <u>Other Objects</u>				
810 Dues and Fees	75.40	69.60		145.00
Total Other Objects	\$75.40	\$69.60		\$145.00
Total 2111 Supervision of Student Services – Head of Component	\$183,067.53	\$169,551.77		\$352,619.30

LEA : 123465303 Methacton SD

Printed 10/27/2016 10:25:49 AM

General Fund (10)

2119 Supervision of Student Services – All Other Supervision	Elementary	Secondary	Federal	Total
100 <u>Personnel Services – Salaries</u>				
100 Personnel Services – Salaries	194,414.80	179,459.81		373,874.61
Total Personnel Services – Salaries	\$194,414.80	\$179,459.81		\$373,874.61
200 <u>Personnel Services – Employee Benefits</u>				
210 Group Insurance – Contracted Provider	540.45	498.87		1,039.32
220 Social Security Contributions	14,498.28	13,383.02		27,881.30
230 PSERS Retirement Contributions	49,661.17	45,841.08		95,502.25
260 Workers' Compensation	1,588.37	1,466.19		3,054.56
270 Group Insurance – Self-Insurance	38,515.78	35,553.02		74,068.80
290 Other Current Employee Benefits	1,266.35	1,168.93		2,435.28
Total Personnel Services – Employee Benefits	\$106,070.40	\$97,911.11		\$203,981.51
500 <u>Other Purchased Services</u>				
580 Travel	1,386.48	642.74		2,029.22
Total Other Purchased Services	\$1,386.48	\$642.74		\$2,029.22
800 <u>Other Objects</u>				
810 Dues and Fees		215.10		215.10
Total Other Objects		\$215.10		\$215.10
Total 2119 Supervision of Student Services – All Other Supervision	\$301,871.68	\$278,228.76		\$580,100.44

LEA : 123465303 Methacton SD

Printed 10/27/2016 10:25:49 AM

General Fund (10)

2120 Guidance Services	Elementary	Secondary	Federal	Total
100 <u>Personnel Services – Salaries</u>				
100 Personnel Services – Salaries	539,773.65	786,708.73		1,326,482.38
Total Personnel Services – Salaries	\$539,773.65	\$786,708.73		\$1,326,482.38
200 <u>Personnel Services – Employee Benefits</u>				
210 Group Insurance – Contracted Provider	2,696.68	2,489.25		5,185.93
220 Social Security Contributions	39,796.68	58,053.23		97,849.91
230 PSERS Retirement Contributions	137,790.34	201,748.31		339,538.65
260 Workers' Compensation	13,696.81	12,643.20		26,340.01
270 Group Insurance – Self-Insurance	246,508.85	227,546.64		474,055.49
Total Personnel Services – Employee Benefits	\$440,489.36	\$502,480.63		\$942,969.99
300 <u>Purchased Professional and Technical Services</u>				
330 Other Professional Services		11,530.00		11,530.00
Total Purchased Professional and Technical Services		\$11,530.00		\$11,530.00
500 <u>Other Purchased Services</u>				
580 Travel	51.52			51.52
Total Other Purchased Services	\$51.52			\$51.52
600 <u>Supplies</u>				
610 General Supplies	4,765.71	663.40		5,429.11
630 Food		135.00		135.00
640 Books and Periodicals	329.55	26.09		355.64
Total Supplies	\$5,095.26	\$824.49		\$5,919.75
800 <u>Other Objects</u>				
810 Dues and Fees		264.00		264.00
890 Miscellaneous Expenditures		(2,905.02)		(2,905.02)
Total Other Objects		(\$2,641.02)		(\$2,641.02)
Total 2120 Guidance Services	\$985,409.79	\$1,298,902.83		\$2,284,312.62

LEA : 123465303 Methacton SD

Printed 10/27/2016 10:25:49 AM

General Fund (10)

2130 Attendance Services

	<u>Elementary</u>	<u>Secondary</u>	<u>Federal</u>	<u>Total</u>
100 <u>Personnel Services – Salaries</u>				
100 Personnel Services – Salaries				128,333.36
Total Personnel Services – Salaries				\$128,333.36
200 <u>Personnel Services – Employee Benefits</u>				
220 Social Security Contributions				9,275.69
230 PSERS Retirement Contributions				32,855.16
Total Personnel Services – Employee Benefits				\$42,130.85
500 <u>Other Purchased Services</u>				
580 Travel				521.00
Total Other Purchased Services				\$521.00
Total 2130 Attendance Services				\$170,985.21

LEA : 123465303 Methacton SD

Printed 10/27/2016 10:25:49 AM

General Fund (10)				
2140 Psychological Services	<u>Elementary</u>	<u>Secondary</u>	<u>Federal</u>	<u>Total</u>
100 <u>Personnel Services – Salaries</u>				
100 Personnel Services – Salaries	139,662.27	154,280.23		293,942.50
Total Personnel Services – Salaries	\$139,662.27	\$154,280.23		\$293,942.50
200 <u>Personnel Services – Employee Benefits</u>				
220 Social Security Contributions	10,164.19	11,365.47		21,529.66
230 PSERS Retirement Contributions	35,978.90	39,865.98		75,844.88
Total Personnel Services – Employee Benefits	\$46,143.09	\$51,231.45		\$97,374.54
300 <u>Purchased Professional and Technical Services</u>				
330 Other Professional Services		92,554.22		92,554.22
Total Purchased Professional and Technical Services		\$92,554.22		\$92,554.22
500 <u>Other Purchased Services</u>				
580 Travel	399.69	141.22		540.91
Total Other Purchased Services	\$399.69	\$141.22		\$540.91
600 <u>Supplies</u>				
610 General Supplies	4,418.35	17,765.76		22,184.11
Total Supplies	\$4,418.35	\$17,765.76		\$22,184.11
Total 2140 Psychological Services	\$190,623.40	\$315,972.88		\$506,596.28

LEA : 123465303 Methacton SD

Printed 10/27/2016 10:25:49 AM

General Fund (10)

2160 Social Work Services

<u>Elementary</u>	<u>Secondary</u>	<u>Federal</u>	<u>Total</u>
-------------------	------------------	----------------	--------------

300 Purchased Professional and Technical Services

330 Other Professional Services			138,500.00
---------------------------------	--	--	------------

Total Purchased Professional and Technical Services			\$138,500.00
--	--	--	---------------------

Total 2160 Social Work Services			\$138,500.00
--	--	--	---------------------

LEA : 123465303 Methacton SD

Printed 10/27/2016 10:25:49 AM

General Fund (10)

2200 Support Services – Instructional Staff	<u>Elementary</u>	<u>Secondary</u>	<u>Federal</u>	<u>Total</u>
100 <u>Personnel Services – Salaries</u>				
100 Personnel Services – Salaries	691,409.32	469,701.17	40,013.31	1,201,123.80
Total Personnel Services – Salaries	\$691,409.32	\$469,701.17	\$40,013.31	\$1,201,123.80
200 <u>Personnel Services – Employee Benefits</u>				
210 Group Insurance – Contracted Provider	1,587.17	1,465.08		3,052.25
220 Social Security Contributions	50,597.95	34,666.16	3,061.02	88,325.13
230 PSERS Retirement Contributions	178,956.06	120,822.24	10,339.41	310,117.71
260 Workers' Compensation	8,061.47	7,441.36		15,502.83
270 Group Insurance – Self-Insurance	148,666.94	138,129.11		286,796.05
290 Other Current Employee Benefits	520.00	480.00		1,000.00
Total Personnel Services – Employee Benefits	\$388,389.59	\$303,003.95	\$13,400.43	\$704,793.97
300 <u>Purchased Professional and Technical Services</u>				
323 Professional Educational Services – Other Educational Agencies			39,562.78	39,562.78
324 Professional Educational Services – Employee Training and Development Services			1,650.00	1,650.00
Total Purchased Professional and Technical Services			\$41,212.78	\$41,212.78
400 <u>Purchased Property Services</u>				
430 Repairs and Maintenance Services		1,547.00		1,547.00
Total Purchased Property Services		\$1,547.00		\$1,547.00
500 <u>Other Purchased Services</u>				
580 Travel	539.37	192.73	15,910.00	16,642.10
595 IU Payments By Withholding			453.33	453.33
Total Other Purchased Services	\$539.37	\$192.73	\$16,363.33	\$17,095.43
600 <u>Supplies</u>				
610 General Supplies	16,325.22	11,620.24	6,647.22	34,592.68
630 Food	133.78	123.50		257.28
640 Books and Periodicals	30,246.04	14,865.20		45,111.24
Total Supplies	\$46,705.04	\$26,608.94	\$6,647.22	\$79,961.20
700 <u>Property</u>				
750 Equipment – Original and Additional	528.05	1,024.00		1,552.05
Total Property	\$528.05	\$1,024.00		\$1,552.05
800 <u>Other Objects</u>				
810 Dues and Fees	1,310.10			1,310.10
Total Other Objects	\$1,310.10			\$1,310.10
Total 2200 Support Services – Instructional Staff	\$1,128,881.47	\$802,077.79	\$117,637.07	\$2,048,596.33

LEA : 123465303 Methacton SD

Printed 10/27/2016 10:25:49 AM

General Fund (10)				
2220 Technology Support Services	<u>Elementary</u>	<u>Secondary</u>	<u>Federal</u>	<u>Total</u>
100 <u>Personnel Services – Salaries</u>				
100 Personnel Services – Salaries	101,480.67	105,492.06		206,972.73
Total Personnel Services – Salaries	\$101,480.67	\$105,492.06		\$206,972.73
200 <u>Personnel Services – Employee Benefits</u>				
220 Social Security Contributions	7,584.07	7,856.01		15,440.08
230 PSERS Retirement Contributions	26,222.62	27,259.12		53,481.74
270 Group Insurance – Self-Insurance	3,580.32	4,202.99		7,783.31
Total Personnel Services – Employee Benefits	\$37,387.01	\$39,318.12		\$76,705.13
500 <u>Other Purchased Services</u>				
580 Travel		12.88		12.88
Total Other Purchased Services		\$12.88		\$12.88
600 <u>Supplies</u>				
610 General Supplies	13,594.62	2,621.73		16,216.35
Total Supplies	\$13,594.62	\$2,621.73		\$16,216.35
700 <u>Property</u>				
750 Equipment – Original and Additional	528.05	1,024.00		1,552.05
Total Property	\$528.05	\$1,024.00		\$1,552.05
Total 2220 Technology Support Services	\$152,990.35	\$148,468.79		\$301,459.14

LEA : 123465303 Methacton SD

Printed 10/27/2016 10:25:49 AM

General Fund (10)				
2250 School Library Services	<u>Elementary</u>	<u>Secondary</u>	<u>Federal</u>	<u>Total</u>
100 <u>Personnel Services – Salaries</u>				
100 Personnel Services – Salaries	391,938.76	156,434.65		548,373.41
Total Personnel Services – Salaries	\$391,938.76	\$156,434.65		\$548,373.41
200 <u>Personnel Services – Employee Benefits</u>				
210 Group Insurance – Contracted Provider	1,587.17	1,465.08		3,052.25
220 Social Security Contributions	28,485.77	11,485.98		39,971.75
230 PSERS Retirement Contributions	102,142.13	40,399.76		142,541.89
260 Workers' Compensation	8,061.47	7,441.36		15,502.83
270 Group Insurance – Self-Insurance	145,086.62	133,926.12		279,012.74
Total Personnel Services – Employee Benefits	\$285,363.16	\$194,718.30		\$480,081.46
400 <u>Purchased Property Services</u>				
430 Repairs and Maintenance Services		1,547.00		1,547.00
Total Purchased Property Services		\$1,547.00		\$1,547.00
600 <u>Supplies</u>				
610 General Supplies	773.07	8,834.82		9,607.89
640 Books and Periodicals	30,206.09	14,865.20		45,071.29
Total Supplies	\$30,979.16	\$23,700.02		\$54,679.18
Total 2250 School Library Services	\$708,281.08	\$376,399.97		\$1,084,681.05

LEA : 123465303 Methacton SD

Printed 10/27/2016 10:25:49 AM

General Fund (10)				
2260 Instruction and Curriculum Development Services	<u>Elementary</u>	<u>Secondary</u>	<u>Federal</u>	<u>Total</u>
100 <u>Personnel Services – Salaries</u>				
100 Personnel Services – Salaries	168,596.11	180,641.74		349,237.85
Total Personnel Services – Salaries	\$168,596.11	\$180,641.74		\$349,237.85
200 <u>Personnel Services – Employee Benefits</u>				
220 Social Security Contributions	12,277.65	13,246.81		25,524.46
230 PSERS Retirement Contributions	43,143.80	46,288.73		89,432.53
290 Other Current Employee Benefits	520.00	480.00		1,000.00
Total Personnel Services – Employee Benefits	\$55,941.45	\$60,015.54		\$115,956.99
500 <u>Other Purchased Services</u>				
580 Travel	169.35	156.33		325.68
Total Other Purchased Services	\$169.35	\$156.33		\$325.68
600 <u>Supplies</u>				
610 General Supplies	1,957.53	163.69		2,121.22
630 Food	133.78	123.50		257.28
Total Supplies	\$2,091.31	\$287.19		\$2,378.50
800 <u>Other Objects</u>				
810 Dues and Fees	1,310.10			1,310.10
Total Other Objects	\$1,310.10			\$1,310.10
Total 2260 Instruction and Curriculum Development Services	\$228,108.32	\$241,100.80		\$469,209.12

LEA : 123465303 Methacton SD

Printed 10/27/2016 10:25:49 AM

General Fund (10)				
2270 Instructional Staff Professional Development Services	<u>Elementary</u>	<u>Secondary</u>	<u>Federal</u>	<u>Total</u>
100 <u>Personnel Services – Salaries</u>				
100 Personnel Services – Salaries	29,393.78	27,132.72	40,013.31	96,539.81
Total Personnel Services – Salaries	\$29,393.78	\$27,132.72	\$40,013.31	\$96,539.81
200 <u>Personnel Services – Employee Benefits</u>				
220 Social Security Contributions	2,250.46	2,077.36	3,061.02	7,388.84
230 PSERS Retirement Contributions	7,447.51	6,874.63	10,339.41	24,661.55
Total Personnel Services – Employee Benefits	\$9,697.97	\$8,951.99	\$13,400.43	\$32,050.39
300 <u>Purchased Professional and Technical Services</u>				
323 Professional Educational Services – Other Educational Agencies			39,562.78	39,562.78
324 Professional Educational Services – Employee Training and Development Services			1,650.00	1,650.00
Total Purchased Professional and Technical Services			\$41,212.78	\$41,212.78
500 <u>Other Purchased Services</u>				
580 Travel	370.02	23.52	15,910.00	16,303.54
595 IU Payments By Withholding			453.33	453.33
Total Other Purchased Services	\$370.02	\$23.52	\$16,363.33	\$16,756.87
600 <u>Supplies</u>				
610 General Supplies			6,647.22	6,647.22
640 Books and Periodicals	39.95			39.95
Total Supplies	\$39.95		\$6,647.22	\$6,687.17
Total 2270 Instructional Staff Professional Development Services	\$39,501.72	\$36,108.23	\$117,637.07	\$193,247.02

LEA : 123465303 Methacton SD

Printed 10/27/2016 10:25:49 AM

General Fund (10)

2300 Support Services – Administration	Elementary	Secondary	Federal	Total
100 Personnel Services – Salaries				
100 Personnel Services – Salaries	1,466,318.47	1,223,025.24		3,406,539.76
Total Personnel Services – Salaries	\$1,466,318.47	\$1,223,025.24		\$3,406,539.76
200 Personnel Services – Employee Benefits				
210 Group Insurance – Contracted Provider	3,931.93	3,629.48		7,561.41
220 Social Security Contributions	105,595.91	88,499.11		241,817.53
230 PSERS Retirement Contributions	371,985.39	308,903.54		852,355.61
240 Tuition Reimbursement		113,817.80		113,817.80
260 Workers' Compensation	19,663.25	18,150.69		37,813.94
270 Group Insurance – Self-Insurance	353,890.17	326,667.84		680,558.01
290 Other Current Employee Benefits	6,207.13	5,587.28		14,794.41
Total Personnel Services – Employee Benefits	\$861,273.78	\$865,255.74		\$1,948,718.71
300 Purchased Professional and Technical Services				
310 Official / Administrative Services				130,115.32
330 Other Professional Services				483,281.15
390 Other Purchased Professional and Technical Services				999.00
Total Purchased Professional and Technical Services				\$614,395.47
400 Purchased Property Services				
440 Rentals		3,453.00		3,453.00
Total Purchased Property Services		\$3,453.00		\$3,453.00
500 Other Purchased Services				
530 Communications				4,982.64
549 Other Advertising/Public Relations				18,536.44
550 Printing and Binding	606.26	22,708.71		26,324.02
580 Travel	2,836.13	(286.16)		10,765.41
591 Services Purchased Locally		2,041.02		2,041.02
Total Other Purchased Services	\$3,442.39	\$24,463.57		\$62,649.53
600 Supplies				
610 General Supplies	749.97	2,461.01		19,760.61
630 Food		1,167.75		7,154.10
640 Books and Periodicals	140.05	5,218.11		6,204.16
Total Supplies	\$890.02	\$8,846.87		\$33,118.87
700 Property				
750 Equipment – Original and Additional		2,632.93		2,632.93
Total Property		\$2,632.93		\$2,632.93
800 Other Objects				
810 Dues and Fees	6,373.10	7,803.17		48,817.13
Total Other Objects	\$6,373.10	\$7,803.17		\$48,817.13
Total 2300 Support Services – Administration	\$2,338,297.76	\$2,135,480.52		\$6,120,325.40

LEA : 123465303 Methacton SD

Printed 10/27/2016 10:25:49 AM

General Fund (10)				
2310 Board Services				
	<u>Elementary</u>	<u>Secondary</u>	<u>Federal</u>	<u>Total</u>
300 <u>Purchased Professional and Technical Services</u>				
330 Other Professional Services				500.00
Total Purchased Professional and Technical Services				\$500.00
500 <u>Other Purchased Services</u>				
549 Other Advertising/Public Relations				1,054.29
580 Travel				2,501.74
Total Other Purchased Services				\$3,556.03
600 <u>Supplies</u>				
610 General Supplies				1,453.03
630 Food				236.76
Total Supplies				\$1,689.79
800 <u>Other Objects</u>				
810 Dues and Fees				13,544.00
Total Other Objects				\$13,544.00
Total 2310 Board Services				\$19,289.82

LEA : 123465303 Methacton SD

Printed 10/27/2016 10:25:49 AM

General Fund (10)

2330 Tax Assessment and Collection Services	<u>Elementary</u>	<u>Secondary</u>	<u>Federal</u>	<u>Total</u>
100 <u>Personnel Services – Salaries</u>				
100 Personnel Services – Salaries				40,306.00
Total Personnel Services – Salaries				\$40,306.00
200 <u>Personnel Services – Employee Benefits</u>				
220 Social Security Contributions				3,083.50
Total Personnel Services – Employee Benefits				\$3,083.50
300 <u>Purchased Professional and Technical Services</u>				
310 Official / Administrative Services				130,115.32
330 Other Professional Services				199,838.00
Total Purchased Professional and Technical Services				\$329,953.32
600 <u>Supplies</u>				
610 General Supplies				10,744.61
Total Supplies				\$10,744.61
Total 2330 Tax Assessment and Collection Services				\$384,087.43

LEA : 123465303 Methacton SD

Printed 10/27/2016 10:25:49 AM

General Fund (10)				
2340 Staff Relations and Negotiations Services	<u>Elementary</u>	<u>Secondary</u>	<u>Federal</u>	<u>Total</u>
100 <u>Personnel Services – Salaries</u>				
100 Personnel Services – Salaries				272,891.01
Total Personnel Services – Salaries				\$272,891.01
200 <u>Personnel Services – Employee Benefits</u>				
220 Social Security Contributions				17,926.77
230 PSERS Retirement Contributions				69,427.73
290 Other Current Employee Benefits				1,000.00
Total Personnel Services – Employee Benefits				\$88,354.50
300 <u>Purchased Professional and Technical Services</u>				
330 Other Professional Services				12,290.50
390 Other Purchased Professional and Technical Services				999.00
Total Purchased Professional and Technical Services				\$13,289.50
500 <u>Other Purchased Services</u>				
530 Communications				22.13
549 Other Advertising/Public Relations				17,482.15
580 Travel				780.06
Total Other Purchased Services				\$18,284.34
600 <u>Supplies</u>				
610 General Supplies				811.14
Total Supplies				\$811.14
800 <u>Other Objects</u>				
810 Dues and Fees				12,220.00
Total Other Objects				\$12,220.00
Total 2340 Staff Relations and Negotiations Services				\$405,850.49

LEA : 123465303 Methacton SD

Printed 10/27/2016 10:25:49 AM

General Fund (10)

2350 Legal and Accounting Services	<u>Elementary</u>	<u>Secondary</u>	<u>Federal</u>	<u>Total</u>
300 <u>Purchased Professional and Technical Services</u>				
330 Other Professional Services				248,249.64
Total Purchased Professional and Technical Services				\$248,249.64
Total 2350 Legal and Accounting Services				\$248,249.64

LEA : 123465303 Methacton SD

Printed 10/27/2016 10:25:49 AM

General Fund (10)				
2360 Office of the Superintendent / Executive Director Services	<u>Elementary</u>	<u>Secondary</u>	<u>Federal</u>	<u>Total</u>
100 <u>Personnel Services – Salaries</u>				
100 Personnel Services – Salaries				252,516.83
Total Personnel Services – Salaries				\$252,516.83
200 <u>Personnel Services – Employee Benefits</u>				
220 Social Security Contributions				15,460.68
230 PSERS Retirement Contributions				63,307.28
290 Other Current Employee Benefits				1,000.00
Total Personnel Services – Employee Benefits				\$79,767.96
300 <u>Purchased Professional and Technical Services</u>				
330 Other Professional Services				4,458.75
Total Purchased Professional and Technical Services				\$4,458.75
500 <u>Other Purchased Services</u>				
580 Travel				4,933.64
Total Other Purchased Services				\$4,933.64
600 <u>Supplies</u>				
610 General Supplies				381.02
630 Food				5,734.61
640 Books and Periodicals				846.00
Total Supplies				\$6,961.63
800 <u>Other Objects</u>				
810 Dues and Fees				8,136.00
Total Other Objects				\$8,136.00
Total 2360 Office of the Superintendent / Executive Director Services				\$356,774.81

LEA : 123465303 Methacton SD

Printed 10/27/2016 10:25:49 AM

General Fund (10)				
2370 Community Relations Services				
	<u>Elementary</u>	<u>Secondary</u>	<u>Federal</u>	<u>Total</u>
100 <u>Personnel Services – Salaries</u>				
100 Personnel Services – Salaries				151,482.21
Total Personnel Services – Salaries				\$151,482.21
200 <u>Personnel Services – Employee Benefits</u>				
220 Social Security Contributions				11,251.56
230 PSERS Retirement Contributions				38,731.67
290 Other Current Employee Benefits				1,000.00
Total Personnel Services – Employee Benefits				\$50,983.23
300 <u>Purchased Professional and Technical Services</u>				
330 Other Professional Services				429.26
Total Purchased Professional and Technical Services				\$429.26
500 <u>Other Purchased Services</u>				
530 Communications				4,960.51
550 Printing and Binding				3,009.05
Total Other Purchased Services				\$7,969.56
600 <u>Supplies</u>				
610 General Supplies				3,159.83
630 Food				14.98
Total Supplies				\$3,174.81
800 <u>Other Objects</u>				
810 Dues and Fees				740.86
Total Other Objects				\$740.86
Total 2370 Community Relations Services				\$214,779.93

LEA : 123465303 Methacton SD

Printed 10/27/2016 10:25:49 AM

General Fund (10)				
2380 Office of the Principal Services	<u>Elementary</u>	<u>Secondary</u>	<u>Federal</u>	<u>Total</u>
100 <u>Personnel Services – Salaries</u>				
100 Personnel Services – Salaries	1,466,318.47	1,223,025.24		2,689,343.71
Total Personnel Services – Salaries	\$1,466,318.47	\$1,223,025.24		\$2,689,343.71
200 <u>Personnel Services – Employee Benefits</u>				
210 Group Insurance – Contracted Provider	3,931.93	3,629.48		7,561.41
220 Social Security Contributions	105,595.91	88,499.11		194,095.02
230 PSERS Retirement Contributions	371,985.39	308,903.54		680,888.93
240 Tuition Reimbursement		113,817.80		113,817.80
260 Workers' Compensation	19,663.25	18,150.69		37,813.94
270 Group Insurance – Self-Insurance	353,890.17	326,667.84		680,558.01
290 Other Current Employee Benefits	6,207.13	5,587.28		11,794.41
Total Personnel Services – Employee Benefits	\$861,273.78	\$865,255.74		\$1,726,529.52
400 <u>Purchased Property Services</u>				
440 Rentals		3,453.00		3,453.00
Total Purchased Property Services		\$3,453.00		\$3,453.00
500 <u>Other Purchased Services</u>				
550 Printing and Binding	606.26	22,708.71		23,314.97
580 Travel	2,836.13	(286.16)		2,549.97
591 Services Purchased Locally		2,041.02		2,041.02
Total Other Purchased Services	\$3,442.39	\$24,463.57		\$27,905.96
600 <u>Supplies</u>				
610 General Supplies	749.97	2,461.01		3,210.98
630 Food		1,167.75		1,167.75
640 Books and Periodicals	140.05	5,218.11		5,358.16
Total Supplies	\$890.02	\$8,846.87		\$9,736.89
700 <u>Property</u>				
750 Equipment – Original and Additional		2,632.93		2,632.93
Total Property		\$2,632.93		\$2,632.93
800 <u>Other Objects</u>				
810 Dues and Fees	6,373.10	7,803.17		14,176.27
Total Other Objects	\$6,373.10	\$7,803.17		\$14,176.27
Total 2380 Office of the Principal Services	\$2,338,297.76	\$2,135,480.52		\$4,473,778.28

LEA : 123465303 Methacton SD

Printed 10/27/2016 10:25:49 AM

General Fund (10)

2390 Other Administration Services	<u>Elementary</u>	<u>Secondary</u>	<u>Federal</u>	<u>Total</u>
300 <u>Purchased Professional and Technical Services</u>				
330 Other Professional Services				17,515.00
Total Purchased Professional and Technical Services				\$17,515.00
Total 2390 Other Administration Services				\$17,515.00

LEA : 123465303 Methacton SD

Printed 10/27/2016 10:25:49 AM

General Fund (10)				
2400 Support Services – Pupil Health	<u>Elementary</u>	<u>Secondary</u>	<u>Federal</u>	<u>Total</u>
100 <u>Personnel Services – Salaries</u>				
100 Personnel Services – Salaries				766,009.30
Total Personnel Services – Salaries				\$766,009.30
200 <u>Personnel Services – Employee Benefits</u>				
210 Group Insurance – Contracted Provider				1,649.60
220 Social Security Contributions				55,609.10
230 PSERS Retirement Contributions				191,340.96
260 Workers' Compensation				8,378.54
270 Group Insurance – Self-Insurance				150,793.07
Total Personnel Services – Employee Benefits				\$407,771.27
300 <u>Purchased Professional and Technical Services</u>				
322 Professional Educational Services – Ius				58,433.21
324 Professional Educational Services – Employee Training and Development Services				1,300.00
329 Professional Educational Services – Other				1,080.00
330 Other Professional Services				444,774.39
Total Purchased Professional and Technical Services				\$505,587.60
500 <u>Other Purchased Services</u>				
580 Travel				260.00
Total Other Purchased Services				\$260.00
600 <u>Supplies</u>				
610 General Supplies				25,789.03
640 Books and Periodicals				197.00
Total Supplies				\$25,986.03
Total 2400 Support Services – Pupil Health				\$1,705,614.20

LEA : 123465303 Methacton SD

Printed 10/27/2016 10:25:49 AM

General Fund (10)

2420 Medical Services

Elementary Secondary Federal Total

100	<u>Personnel Services – Salaries</u>			
100	Personnel Services – Salaries			96,759.01
Total Personnel Services – Salaries				\$96,759.01
200	<u>Personnel Services – Employee Benefits</u>			
220	Social Security Contributions			7,186.91
230	PSERS Retirement Contributions			24,980.55
Total Personnel Services – Employee Benefits				\$32,167.46
300	<u>Purchased Professional and Technical Services</u>			
329	Professional Educational Services – Other			1,080.00
330	Other Professional Services			444,454.39
Total Purchased Professional and Technical Services				\$445,534.39
600	<u>Supplies</u>			
610	General Supplies			2,114.23
Total Supplies				\$2,114.23
Total 2420 Medical Services				\$576,575.09

LEA : 123465303 Methacton SD

Printed 10/27/2016 10:25:49 AM

General Fund (10)

2430 Dental Services

<u>Elementary</u>	<u>Secondary</u>	<u>Federal</u>	<u>Total</u>
-------------------	------------------	----------------	--------------

300 Purchased Professional and Technical Services

330 Other Professional Services			320.00
---------------------------------	--	--	--------

Total Purchased Professional and Technical Services			\$320.00
--	--	--	-----------------

Total 2430 Dental Services			\$320.00
-----------------------------------	--	--	-----------------

LEA : 123465303 Methacton SD

Printed 10/27/2016 10:25:49 AM

General Fund (10)				
2440 Nursing Services	<u>Elementary</u>	<u>Secondary</u>	<u>Federal</u>	<u>Total</u>
100 <u>Personnel Services – Salaries</u>				
100 Personnel Services – Salaries				669,250.29
Total Personnel Services – Salaries				\$669,250.29
200 <u>Personnel Services – Employee Benefits</u>				
210 Group Insurance – Contracted Provider				1,649.60
220 Social Security Contributions				48,422.19
230 PSERS Retirement Contributions				166,360.41
260 Workers' Compensation				8,378.54
270 Group Insurance – Self-Insurance				150,793.07
Total Personnel Services – Employee Benefits				\$375,603.81
300 <u>Purchased Professional and Technical Services</u>				
322 Professional Educational Services – Ius				58,433.21
324 Professional Educational Services – Employee Training and Development Services				1,300.00
Total Purchased Professional and Technical Services				\$59,733.21
500 <u>Other Purchased Services</u>				
580 Travel				260.00
Total Other Purchased Services				\$260.00
600 <u>Supplies</u>				
610 General Supplies				23,674.80
640 Books and Periodicals				197.00
Total Supplies				\$23,871.80
Total 2440 Nursing Services				\$1,128,719.11

LEA : 123465303 Methacton SD

Printed 10/27/2016 10:25:49 AM

General Fund (10)				
2500 Support Services – Business	<u>Elementary</u>	<u>Secondary</u>	<u>Federal</u>	<u>Total</u>
100 <u>Personnel Services – Salaries</u>				
100 Personnel Services – Salaries				513,957.62
Total Personnel Services – Salaries				\$513,957.62
200 <u>Personnel Services – Employee Benefits</u>				
210 Group Insurance – Contracted Provider				969.72
220 Social Security Contributions				35,577.47
230 PSERS Retirement Contributions				129,832.48
260 Workers' Compensation				5,345.50
270 Group Insurance – Self-Insurance				101,373.76
290 Other Current Employee Benefits				2,000.00
Total Personnel Services – Employee Benefits				\$275,098.93
300 <u>Purchased Professional and Technical Services</u>				
330 Other Professional Services				38,487.68
Total Purchased Professional and Technical Services				\$38,487.68
400 <u>Purchased Property Services</u>				
430 Repairs and Maintenance Services				702.32
440 Rentals				11,592.00
Total Purchased Property Services				\$12,294.32
500 <u>Other Purchased Services</u>				
520 Insurance – General				248,788.80
530 Communications				32,224.55
549 Other Advertising/Public Relations				720.74
550 Printing and Binding				695.35
580 Travel				2,029.23
Total Other Purchased Services				\$284,458.67
600 <u>Supplies</u>				
610 General Supplies				2,771.13
Total Supplies				\$2,771.13
800 <u>Other Objects</u>				
810 Dues and Fees				16,760.14
Total Other Objects				\$16,760.14
Total 2500 Support Services – Business				\$1,143,828.49

LEA : 123465303 Methacton SD

Printed 10/27/2016 10:25:49 AM

General Fund (10)				
2510 Fiscal Services				
	<u>Elementary</u>	<u>Secondary</u>	<u>Federal</u>	<u>Total</u>
100 <u>Personnel Services – Salaries</u>				
100 Personnel Services – Salaries				513,957.62
Total Personnel Services – Salaries				\$513,957.62
200 <u>Personnel Services – Employee Benefits</u>				
210 Group Insurance – Contracted Provider				969.72
220 Social Security Contributions				35,577.47
230 PSERS Retirement Contributions				129,832.48
260 Workers' Compensation				5,345.50
270 Group Insurance – Self-Insurance				101,373.76
290 Other Current Employee Benefits				2,000.00
Total Personnel Services – Employee Benefits				\$275,098.93
300 <u>Purchased Professional and Technical Services</u>				
330 Other Professional Services				38,487.68
Total Purchased Professional and Technical Services				\$38,487.68
500 <u>Other Purchased Services</u>				
530 Communications				87.20
549 Other Advertising/Public Relations				720.74
550 Printing and Binding				695.35
580 Travel				2,029.23
Total Other Purchased Services				\$3,532.52
600 <u>Supplies</u>				
610 General Supplies				2,771.13
Total Supplies				\$2,771.13
800 <u>Other Objects</u>				
810 Dues and Fees				16,760.14
Total Other Objects				\$16,760.14
Total 2510 Fiscal Services				\$850,608.02

LEA : 123465303 Methacton SD

Printed 10/27/2016 10:25:49 AM

General Fund (10)				
2511 Supervision of Fiscal Services - Head of Component	<u>Elementary</u>	<u>Secondary</u>	<u>Federal</u>	<u>Total</u>
100 <u>Personnel Services – Salaries</u>				
100 Personnel Services – Salaries				177,415.41
Total Personnel Services – Salaries				\$177,415.41
200 <u>Personnel Services – Employee Benefits</u>				
210 Group Insurance – Contracted Provider				321.48
220 Social Security Contributions				10,901.00
230 PSERS Retirement Contributions				42,584.34
260 Workers' Compensation				763.66
270 Group Insurance – Self-Insurance				16,296.12
290 Other Current Employee Benefits				1,000.00
Total Personnel Services – Employee Benefits				\$71,866.60
300 <u>Purchased Professional and Technical Services</u>				
330 Other Professional Services				10,564.95
Total Purchased Professional and Technical Services				\$10,564.95
500 <u>Other Purchased Services</u>				
530 Communications				67.60
549 Other Advertising/Public Relations				720.74
580 Travel				1,325.69
Total Other Purchased Services				\$2,114.03
800 <u>Other Objects</u>				
810 Dues and Fees				287.00
Total Other Objects				\$287.00
Total 2511 Supervision of Fiscal Services - Head of Component				\$262,247.99

LEA : 123465303 Methacton SD

Printed 10/27/2016 10:25:49 AM

General Fund (10)				
2513 Receiving and Disbursing Funds Services	<u>Elementary</u>	<u>Secondary</u>	<u>Federal</u>	<u>Total</u>
100 <u>Personnel Services – Salaries</u>				
100 Personnel Services – Salaries				105,378.00
Total Personnel Services – Salaries				\$105,378.00
200 <u>Personnel Services – Employee Benefits</u>				
210 Group Insurance – Contracted Provider				149.76
220 Social Security Contributions				7,745.12
230 PSERS Retirement Contributions				27,229.54
260 Workers' Compensation				1,527.28
270 Group Insurance – Self-Insurance				25,366.04
Total Personnel Services – Employee Benefits				\$62,017.74
500 <u>Other Purchased Services</u>				
530 Communications				19.60
550 Printing and Binding				321.99
580 Travel				5.57
Total Other Purchased Services				\$347.16
Total 2513 Receiving and Disbursing Funds Services				\$167,742.90

LEA : 123465303 Methacton SD

Printed 10/27/2016 10:25:49 AM

General Fund (10)

2514 Payroll Services

	<u>Elementary</u>	<u>Secondary</u>	<u>Federal</u>	<u>Total</u>
100 <u>Personnel Services – Salaries</u>				
100 Personnel Services – Salaries				44,385.72
Total Personnel Services – Salaries				\$44,385.72
200 <u>Personnel Services – Employee Benefits</u>				
210 Group Insurance – Contracted Provider				27.24
220 Social Security Contributions				3,295.33
230 PSERS Retirement Contributions				11,469.19
260 Workers' Compensation				763.64
270 Group Insurance – Self-Insurance				7,019.52
Total Personnel Services – Employee Benefits				\$22,574.92
Total 2514 Payroll Services				\$66,960.64

LEA : 123465303 Methacton SD

Printed 10/27/2016 10:25:49 AM

General Fund (10)				
2515 Financial Accounting Services	<u>Elementary</u>	<u>Secondary</u>	<u>Federal</u>	<u>Total</u>
100 <u>Personnel Services – Salaries</u>				
100 Personnel Services – Salaries				101,343.78
Total Personnel Services – Salaries				\$101,343.78
200 <u>Personnel Services – Employee Benefits</u>				
210 Group Insurance – Contracted Provider				321.48
220 Social Security Contributions				7,540.73
230 PSERS Retirement Contributions				26,187.33
260 Workers' Compensation				763.64
270 Group Insurance – Self-Insurance				16,372.56
290 Other Current Employee Benefits				1,000.00
Total Personnel Services – Employee Benefits				\$52,185.74
500 <u>Other Purchased Services</u>				
580 Travel				697.97
Total Other Purchased Services				\$697.97
800 <u>Other Objects</u>				
810 Dues and Fees				14,199.39
Total Other Objects				\$14,199.39
Total 2515 Financial Accounting Services				\$168,426.88

LEA : 123465303 Methacton SD

Printed 10/27/2016 10:25:49 AM

General Fund (10)				
2519 Other Fiscal Services	<u>Elementary</u>	<u>Secondary</u>	<u>Federal</u>	<u>Total</u>
100 <u>Personnel Services – Salaries</u>				
100 Personnel Services – Salaries				85,434.71
Total Personnel Services – Salaries				\$85,434.71
200 <u>Personnel Services – Employee Benefits</u>				
210 Group Insurance – Contracted Provider				149.76
220 Social Security Contributions				6,095.29
230 PSERS Retirement Contributions				22,362.08
260 Workers' Compensation				1,527.28
270 Group Insurance – Self-Insurance				36,319.52
Total Personnel Services – Employee Benefits				\$66,453.93
300 <u>Purchased Professional and Technical Services</u>				
330 Other Professional Services				27,922.73
Total Purchased Professional and Technical Services				\$27,922.73
500 <u>Other Purchased Services</u>				
550 Printing and Binding				373.36
Total Other Purchased Services				\$373.36
600 <u>Supplies</u>				
610 General Supplies				2,771.13
Total Supplies				\$2,771.13
800 <u>Other Objects</u>				
810 Dues and Fees				2,273.75
Total Other Objects				\$2,273.75
Total 2519 Other Fiscal Services				\$185,229.61

LEA : 123465303 Methacton SD

Printed 10/27/2016 10:25:49 AM

General Fund (10)				
2590 Other Support Services – Business	<u>Elementary</u>	<u>Secondary</u>	<u>Federal</u>	<u>Total</u>
400 <u>Purchased Property Services</u>				
430 Repairs and Maintenance Services				702.32
440 Rentals				11,592.00
Total Purchased Property Services				\$12,294.32
500 <u>Other Purchased Services</u>				
520 Insurance – General				248,788.80
530 Communications				32,137.35
Total Other Purchased Services				\$280,926.15
Total 2590 Other Support Services – Business				\$293,220.47

LEA : 123465303 Methacton SD

Printed 10/27/2016 10:25:49 AM

General Fund (10)				
2600 Operation and Maintenance of Plant Services	<u>Elementary</u>	<u>Secondary</u>	<u>Federal</u>	<u>Total</u>
100 <u>Personnel Services – Salaries</u>				
100 Personnel Services – Salaries				3,120,659.71
Total Personnel Services – Salaries				\$3,120,659.71
200 <u>Personnel Services – Employee Benefits</u>				
210 Group Insurance – Contracted Provider				8,223.56
220 Social Security Contributions				232,704.17
230 PSERS Retirement Contributions				818,682.84
260 Workers' Compensation				39,683.56
270 Group Insurance – Self-Insurance				724,949.47
290 Other Current Employee Benefits				3,266.73
Total Personnel Services – Employee Benefits				\$1,827,510.33
300 <u>Purchased Professional and Technical Services</u>				
330 Other Professional Services				15,505.00
340 Technical Services				16,935.21
390 Other Purchased Professional and Technical Services				285,181.89
Total Purchased Professional and Technical Services				\$317,622.10
400 <u>Purchased Property Services</u>				
410 Cleaning Services				157,764.98
420 Utility Services				1,318,272.73
430 Repairs and Maintenance Services				383,383.61
440 Rentals				41,564.38
450 Construction Services				(4,689.06)
460 Extermination Services				8,352.00
Total Purchased Property Services				\$1,904,648.64
500 <u>Other Purchased Services</u>				
530 Communications				69,515.58
580 Travel				2,353.72
Total Other Purchased Services				\$71,869.30
600 <u>Supplies</u>				
610 General Supplies	177,384.56	179,161.99		356,546.55
620 Energy				200,334.72
640 Books and Periodicals				29.55
Total Supplies	\$177,384.56	\$179,161.99		\$556,910.82
700 <u>Property</u>				
750 Equipment – Original and Additional				33,441.55
760 Equipment – Replacement				5,829.70
Total Property				\$39,271.25
800 <u>Other Objects</u>				
810 Dues and Fees				4,020.00
Total Other Objects				\$4,020.00
Total 2600 Operation and Maintenance of Plant Services	\$177,384.56	\$179,161.99		\$7,842,512.15

LEA : 123465303 Methacton SD

Printed 10/27/2016 10:25:49 AM

General Fund (10)

2610 Supervision of Operation and Maintenance of Plant Services	<u>Elementary</u>	<u>Secondary</u>	<u>Federal</u>	<u>Total</u>
100 <u>Personnel Services – Salaries</u>				
100 Personnel Services – Salaries				297,050.38
Total Personnel Services – Salaries				\$297,050.38
200 <u>Personnel Services – Employee Benefits</u>				
210 Group Insurance – Contracted Provider				745.08
220 Social Security Contributions				22,206.46
230 PSERS Retirement Contributions				76,631.04
260 Workers' Compensation				2,290.92
270 Group Insurance – Self-Insurance				51,973.92
290 Other Current Employee Benefits				1,981.84
Total Personnel Services – Employee Benefits				\$155,829.26
500 <u>Other Purchased Services</u>				
580 Travel				663.67
Total Other Purchased Services				\$663.67
Total 2610 Supervision of Operation and Maintenance of Plant Services				\$453,543.31

LEA : 123465303 Methacton SD

Printed 10/27/2016 10:25:49 AM

General Fund (10)				
2611 Supervision of Operation and Maintenance of Plant Services – Head of Component	<u>Elementary</u>	<u>Secondary</u>	<u>Federal</u>	<u>Total</u>
100 <u>Personnel Services – Salaries</u>				
100 Personnel Services – Salaries				204,244.53
Total Personnel Services – Salaries				\$204,244.53
200 <u>Personnel Services – Employee Benefits</u>				
210 Group Insurance – Contracted Provider				423.60
220 Social Security Contributions				15,295.00
230 PSERS Retirement Contributions				53,081.24
260 Workers' Compensation				1,527.28
270 Group Insurance – Self-Insurance				35,133.60
290 Other Current Employee Benefits				981.84
Total Personnel Services – Employee Benefits				\$106,442.56
500 <u>Other Purchased Services</u>				
580 Travel				663.67
Total Other Purchased Services				\$663.67
Total 2611 Supervision of Operation and Maintenance of Plant Services – Head of Component				\$311,350.76

LEA : 123465303 Methacton SD

Printed 10/27/2016 10:25:49 AM

General Fund (10)

2619 Supervision of Operation and Maintenance of Plant Services – All Other Supervision	<u>Elementary</u>	<u>Secondary</u>	<u>Federal</u>	<u>Total</u>
100 <u>Personnel Services – Salaries</u>				
100 Personnel Services – Salaries				92,805.85
Total Personnel Services – Salaries				\$92,805.85
200 <u>Personnel Services – Employee Benefits</u>				
210 Group Insurance – Contracted Provider				321.48
220 Social Security Contributions				6,911.46
230 PSERS Retirement Contributions				23,549.80
260 Workers' Compensation				763.64
270 Group Insurance – Self-Insurance				16,840.32
290 Other Current Employee Benefits				1,000.00
Total Personnel Services – Employee Benefits				\$49,386.70
Total 2619 Supervision of Operation and Maintenance of Plant Services – All Other Supervision				\$142,192.55

LEA : 123465303 Methacton SD

Printed 10/27/2016 10:25:49 AM

General Fund (10)				
2620 Operation of Buildings Services	<u>Elementary</u>	<u>Secondary</u>	<u>Federal</u>	<u>Total</u>
100 <u>Personnel Services – Salaries</u>				
100 Personnel Services – Salaries				2,602,272.69
Total Personnel Services – Salaries				\$2,602,272.69
200 <u>Personnel Services – Employee Benefits</u>				
210 Group Insurance – Contracted Provider				7,478.48
220 Social Security Contributions				194,201.51
230 PSERS Retirement Contributions				680,947.03
260 Workers' Compensation				37,392.64
270 Group Insurance – Self-Insurance				672,975.55
290 Other Current Employee Benefits				1,284.89
Total Personnel Services – Employee Benefits				\$1,594,280.10
300 <u>Purchased Professional and Technical Services</u>				
330 Other Professional Services				15,505.00
Total Purchased Professional and Technical Services				\$15,505.00
400 <u>Purchased Property Services</u>				
410 Cleaning Services				135,582.06
420 Utility Services				1,318,272.73
430 Repairs and Maintenance Services				80,775.53
440 Rentals				3,253.49
450 Construction Services				(4,689.06)
Total Purchased Property Services				\$1,533,194.75
500 <u>Other Purchased Services</u>				
530 Communications				69,515.58
Total Other Purchased Services				\$69,515.58
600 <u>Supplies</u>				
610 General Supplies	142,521.26	146,687.15		289,208.41
620 Energy				200,334.72
Total Supplies	\$142,521.26	\$146,687.15		\$489,543.13
700 <u>Property</u>				
760 Equipment – Replacement				4,376.79
Total Property				\$4,376.79
Total 2620 Operation of Buildings Services	\$142,521.26	\$146,687.15		\$6,308,688.04

LEA : 123465303 Methacton SD

Printed 10/27/2016 10:25:49 AM

General Fund (10)				
2630 Care and Upkeep of Grounds Services	<u>Elementary</u>	<u>Secondary</u>	<u>Federal</u>	<u>Total</u>
100 <u>Personnel Services – Salaries</u>				
100 Personnel Services – Salaries				221,336.64
Total Personnel Services – Salaries				\$221,336.64
200 <u>Personnel Services – Employee Benefits</u>				
220 Social Security Contributions				16,296.20
230 PSERS Retirement Contributions				61,104.77
Total Personnel Services – Employee Benefits				\$77,400.97
400 <u>Purchased Property Services</u>				
430 Repairs and Maintenance Services				10,015.75
Total Purchased Property Services				\$10,015.75
500 <u>Other Purchased Services</u>				
580 Travel				109.74
Total Other Purchased Services				\$109.74
600 <u>Supplies</u>				
610 General Supplies	26,547.16	24,505.08		51,052.24
Total Supplies	\$26,547.16	\$24,505.08		\$51,052.24
Total 2630 Care and Upkeep of Grounds Services	\$26,547.16	\$24,505.08		\$359,915.34

LEA : 123465303 Methacton SD

Printed 10/27/2016 10:25:49 AM

General Fund (10)				
2640 Care and Upkeep of Equipment Services	<u>Elementary</u>	<u>Secondary</u>	<u>Federal</u>	<u>Total</u>
400 <u>Purchased Property Services</u>				
430 Repairs and Maintenance Services				184,333.98
440 Rentals				30,244.60
Total Purchased Property Services				\$214,578.58
600 <u>Supplies</u>				
610 General Supplies	5,459.68	5,333.03		10,792.71
Total Supplies	\$5,459.68	\$5,333.03		\$10,792.71
700 <u>Property</u>				
760 Equipment – Replacement				1,452.91
Total Property				\$1,452.91
Total 2640 Care and Upkeep of Equipment Services	\$5,459.68	\$5,333.03		\$226,824.20

LEA : 123465303 Methacton SD

Printed 10/27/2016 10:25:49 AM

General Fund (10)

2650 Vehicle Operation and Maintenance Services (Other Than Student Transportation Vehicles)	<u>Elementary</u>	<u>Secondary</u>	<u>Federal</u>	<u>Total</u>
400 <u>Purchased Property Services</u>				
430 Repairs and Maintenance Services				32,673.89
Total Purchased Property Services				\$32,673.89
600 <u>Supplies</u>				
610 General Supplies	1,673.27	1,544.56		3,217.83
Total Supplies	\$1,673.27	\$1,544.56		\$3,217.83
700 <u>Property</u>				
750 Equipment – Original and Additional				33,441.55
Total Property				\$33,441.55
Total 2650 Vehicle Operation and Maintenance Services (Other Than Student Transportation Vehicles)	\$1,673.27	\$1,544.56		\$69,333.27

LEA : 123465303 Methacton SD

Printed 10/27/2016 10:25:49 AM

General Fund (10)

2660 Safety and Security Services

Elementary

Secondary

Federal

Total

300 Purchased Professional and Technical Services

340 Technical Services

16,935.21

Total Purchased Professional and Technical Services				\$16,935.21
Total 2660 Safety and Security Services				\$16,935.21

LEA : 123465303 Methacton SD

Printed 10/27/2016 10:25:49 AM

General Fund (10)				
2690 Other Operation and Maintenance of Plant Services	<u>Elementary</u>	<u>Secondary</u>	<u>Federal</u>	<u>Total</u>
300 <u>Purchased Professional and Technical Services</u>				
390 Other Purchased Professional and Technical Services				285,181.89
Total Purchased Professional and Technical Services				\$285,181.89
400 <u>Purchased Property Services</u>				
410 Cleaning Services				22,182.92
430 Repairs and Maintenance Services				75,584.46
440 Rentals				8,066.29
460 Extermination Services				8,352.00
Total Purchased Property Services				\$114,185.67
500 <u>Other Purchased Services</u>				
580 Travel				1,580.31
Total Other Purchased Services				\$1,580.31
600 <u>Supplies</u>				
610 General Supplies	1,183.19	1,092.17		2,275.36
640 Books and Periodicals				29.55
Total Supplies	\$1,183.19	\$1,092.17		\$2,304.91
800 <u>Other Objects</u>				
810 Dues and Fees				4,020.00
Total Other Objects				\$4,020.00
Total 2690 Other Operation and Maintenance of Plant Services	\$1,183.19	\$1,092.17		\$407,272.78

LEA : 123465303 Methacton SD

Printed 10/27/2016 10:25:49 AM

General Fund (10)

2700 Student Transportation Services	<u>Elementary</u>	<u>Secondary</u>	<u>Federal</u>	<u>Total</u>
100 <u>Personnel Services – Salaries</u>				
100 Personnel Services – Salaries				296,107.81
Total Personnel Services – Salaries				\$296,107.81
200 <u>Personnel Services – Employee Benefits</u>				
210 Group Insurance – Contracted Provider				859.56
220 Social Security Contributions				21,847.04
230 PSERS Retirement Contributions				80,557.89
260 Workers' Compensation				4,260.22
270 Group Insurance – Self-Insurance				69,847.98
Total Personnel Services – Employee Benefits				\$177,372.69
500 <u>Other Purchased Services</u>				
511 Student Transportation Services from Another LEA Within the State				720.00
513 Contracted Carriers			5,284.08	6,165,227.89
516 Student Transportation Services From the IU				1,261.47
519 Student Transportation Services From Other Sources				3,600.00
580 Travel				678.40
Total Other Purchased Services			\$5,284.08	\$6,171,487.76
600 <u>Supplies</u>				
610 General Supplies				641.52
620 Energy				30,300.40
Total Supplies				\$30,941.92
Total 2700 Student Transportation Services			\$5,284.08	\$6,675,910.18

LEA : 123465303 Methacton SD

Printed 10/27/2016 10:25:49 AM

General Fund (10)				
2710 Supervision of Student Transportation Services	<u>Elementary</u>	<u>Secondary</u>	<u>Federal</u>	<u>Total</u>
100 <u>Personnel Services – Salaries</u>				
100 Personnel Services – Salaries				73,800.29
Total Personnel Services – Salaries				\$73,800.29
200 <u>Personnel Services – Employee Benefits</u>				
210 Group Insurance – Contracted Provider				277.71
220 Social Security Contributions				5,463.46
230 PSERS Retirement Contributions				19,069.96
260 Workers' Compensation				1,319.32
270 Group Insurance – Self-Insurance				17,848.49
Total Personnel Services – Employee Benefits				\$43,978.94
500 <u>Other Purchased Services</u>				
580 Travel				586.03
Total Other Purchased Services				\$586.03
600 <u>Supplies</u>				
610 General Supplies				554.17
Total Supplies				\$554.17
Total 2710 Supervision of Student Transportation Services				\$118,919.43

LEA : 123465303 Methacton SD

Printed 10/27/2016 10:25:49 AM

General Fund (10)				
2719 Supervision of Student Transportation Services – All Other Supervision	<u>Elementary</u>	<u>Secondary</u>	<u>Federal</u>	<u>Total</u>
100 <u>Personnel Services – Salaries</u>				
100 Personnel Services – Salaries				73,800.29
Total Personnel Services – Salaries				\$73,800.29
200 <u>Personnel Services – Employee Benefits</u>				
210 Group Insurance – Contracted Provider				277.71
220 Social Security Contributions				5,463.46
230 PSERS Retirement Contributions				19,069.96
260 Workers' Compensation				1,319.32
270 Group Insurance – Self-Insurance				17,848.49
Total Personnel Services – Employee Benefits				\$43,978.94
500 <u>Other Purchased Services</u>				
580 Travel				586.03
Total Other Purchased Services				\$586.03
600 <u>Supplies</u>				
610 General Supplies				554.17
Total Supplies				\$554.17
Total 2719 Supervision of Student Transportation Services – All Other Supervision				\$118,919.43

LEA : 123465303 Methacton SD

Printed 10/27/2016 10:25:49 AM

General Fund (10)				
2720 Vehicle Operation Services	<u>Elementary</u>	<u>Secondary</u>	<u>Federal</u>	<u>Total</u>
100 <u>Personnel Services – Salaries</u>				
100 Personnel Services – Salaries				181,988.95
Total Personnel Services – Salaries				\$181,988.95
200 <u>Personnel Services – Employee Benefits</u>				
210 Group Insurance – Contracted Provider				464.81
220 Social Security Contributions				13,408.85
230 PSERS Retirement Contributions				50,519.02
260 Workers' Compensation				2,360.82
270 Group Insurance – Self-Insurance				42,488.87
Total Personnel Services – Employee Benefits				\$109,242.37
500 <u>Other Purchased Services</u>				
511 Student Transportation Services from Another LEA Within the State				621.96
513 Contracted Carriers			5,284.08	5,057,477.68
516 Student Transportation Services From the IU				1,089.71
Total Other Purchased Services			\$5,284.08	\$5,059,189.35
600 <u>Supplies</u>				
620 Energy				26,174.64
Total Supplies				\$26,174.64
Total 2720 Vehicle Operation Services			\$5,284.08	\$5,376,595.31

LEA : 123465303 Methacton SD

Printed 10/27/2016 10:25:49 AM

General Fund (10)

2740 Vehicle Servicing and Maintenance Services	<u>Elementary</u>	<u>Secondary</u>	<u>Federal</u>	<u>Total</u>
500 <u>Other Purchased Services</u>				
513 Contracted Carriers				269,001.08
Total Other Purchased Services				\$269,001.08
Total 2740 Vehicle Servicing and Maintenance Services				\$269,001.08

LEA : 123465303 Methacton SD

Printed 10/27/2016 10:25:49 AM

General Fund (10)				
2750 Nonpublic Transportation	<u>Elementary</u>	<u>Secondary</u>	<u>Federal</u>	<u>Total</u>
100 <u>Personnel Services – Salaries</u>				
100 Personnel Services – Salaries				40,318.57
Total Personnel Services – Salaries				\$40,318.57
200 <u>Personnel Services – Employee Benefits</u>				
210 Group Insurance – Contracted Provider				117.04
220 Social Security Contributions				2,974.73
230 PSERS Retirement Contributions				10,968.91
260 Workers' Compensation				580.08
270 Group Insurance – Self-Insurance				9,510.62
Total Personnel Services – Employee Benefits				\$24,151.38
500 <u>Other Purchased Services</u>				
511 Student Transportation Services from Another LEA Within the State				98.04
513 Contracted Carriers				838,749.13
516 Student Transportation Services From the IU				171.76
519 Student Transportation Services From Other Sources				490.18
580 Travel				92.37
Total Other Purchased Services				\$839,601.48
600 <u>Supplies</u>				
610 General Supplies				87.35
620 Energy				4,125.76
Total Supplies				\$4,213.11
Total 2750 Nonpublic Transportation				\$908,284.54

LEA : 123465303 Methacton SD

Printed 10/27/2016 10:25:49 AM

General Fund (10)

2790 Other Student Transportation Services	<u>Elementary</u>	<u>Secondary</u>	<u>Federal</u>	<u>Total</u>
500 <u>Other Purchased Services</u>				
519 Student Transportation Services From Other Sources				3,109.82
Total Other Purchased Services				\$3,109.82
Total 2790 Other Student Transportation Services				\$3,109.82

LEA : 123465303 Methacton SD

Printed 10/27/2016 10:25:49 AM

General Fund (10)				
2800 Support Services – Central	<u>Elementary</u>	<u>Secondary</u>	<u>Federal</u>	<u>Total</u>
100 <u>Personnel Services – Salaries</u>				
100 Personnel Services – Salaries				691,873.57
Total Personnel Services – Salaries				\$691,873.57
200 <u>Personnel Services – Employee Benefits</u>				
210 Group Insurance – Contracted Provider				1,511.15
220 Social Security Contributions				50,235.09
230 PSERS Retirement Contributions				176,036.71
260 Workers' Compensation				7,675.33
270 Group Insurance – Self-Insurance				138,137.18
290 Other Current Employee Benefits				1,511.84
Total Personnel Services – Employee Benefits				\$375,107.30
400 <u>Purchased Property Services</u>				
430 Repairs and Maintenance Services				67,823.68
440 Rentals				188,819.26
Total Purchased Property Services				\$256,642.94
500 <u>Other Purchased Services</u>				
530 Communications				58,837.76
580 Travel				7,025.11
Total Other Purchased Services				\$65,862.87
600 <u>Supplies</u>				
610 General Supplies			100.00	318,334.38
Total Supplies			\$100.00	\$318,334.38
700 <u>Property</u>				
750 Equipment – Original and Additional				28,454.95
760 Equipment – Replacement				39,832.18
Total Property				\$68,287.13
Total 2800 Support Services – Central			\$100.00	\$1,776,108.19

LEA : 123465303 Methacton SD

Printed 10/27/2016 10:25:49 AM

General Fund (10)				
2810 Planning, Research, Development and Evaluation Services	<u>Elementary</u>	<u>Secondary</u>	<u>Federal</u>	<u>Total</u>
100 <u>Personnel Services – Salaries</u>				
100 Personnel Services – Salaries				691,873.57
Total Personnel Services – Salaries				\$691,873.57
200 <u>Personnel Services – Employee Benefits</u>				
210 Group Insurance – Contracted Provider				1,511.15
220 Social Security Contributions				50,235.09
230 PSERS Retirement Contributions				176,036.71
260 Workers' Compensation				7,675.33
270 Group Insurance – Self-Insurance				138,137.18
290 Other Current Employee Benefits				1,511.84
Total Personnel Services – Employee Benefits				\$375,107.30
400 <u>Purchased Property Services</u>				
430 Repairs and Maintenance Services				67,823.68
Total Purchased Property Services				\$67,823.68
500 <u>Other Purchased Services</u>				
580 Travel				7,025.11
Total Other Purchased Services				\$7,025.11
600 <u>Supplies</u>				
610 General Supplies				318,234.38
Total Supplies				\$318,234.38
700 <u>Property</u>				
750 Equipment – Original and Additional				28,454.95
760 Equipment – Replacement				39,832.18
Total Property				\$68,287.13
Total 2810 Planning, Research, Development and Evaluation Services				\$1,528,351.17

LEA : 123465303 Methacton SD

Printed 10/27/2016 10:25:49 AM

General Fund (10)

2840 Data Processing Services	<u>Elementary</u>	<u>Secondary</u>	<u>Federal</u>	<u>Total</u>
400 <u>Purchased Property Services</u>				
440 Rentals				188,819.26
Total Purchased Property Services				\$188,819.26
Total 2840 Data Processing Services				\$188,819.26

LEA : 123465303 Methacton SD

Printed 10/27/2016 10:25:49 AM

General Fund (10)

2850 State and Federal Agency Liaison Services

Elementary

Secondary

Federal

Total

600 Supplies

610 General Supplies

100.00

100.00

Total Supplies				\$100.00	\$100.00
Total 2850 State and Federal Agency Liaison Services				\$100.00	\$100.00

LEA : 123465303 Methacton SD

Printed 10/27/2016 10:25:49 AM

General Fund (10)

2890 Other Support Services Central	<u>Elementary</u>	<u>Secondary</u>	<u>Federal</u>	<u>Total</u>
500 <u>Other Purchased Services</u>				
530 Communications				58,837.76
Total Other Purchased Services				\$58,837.76
Total 2890 Other Support Services Central				\$58,837.76

LEA : 123465303 Methacton SD

Printed 10/27/2016 10:25:49 AM

General Fund (10)

2900 Other Support Services

Elementary Secondary Federal Total

500 Other Purchased Services

595 IU Payments By Withholding 71,484.57

596 Direct Payments To Intermediate Units 5,370.00

Total Other Purchased Services				\$76,854.57
Total 2900 Other Support Services				\$76,854.57

LEA : 123465303 Methacton SD

Printed 10/27/2016 10:25:49 AM

General Fund (10)					
2910 Support Services Not Listed Elsewhere In the 2000 Series		<u>Elementary</u>	<u>Secondary</u>	<u>Federal</u>	<u>Total</u>
500	<u>Other Purchased Services</u>				
	595 IU Payments By Withholding				71,484.57
	596 Direct Payments To Intermediate Units				5,370.00
Total Other Purchased Services					\$76,854.57
Total 2910 Support Services Not Listed Elsewhere In the 2000 Series					\$76,854.57

LEA : 123465303 Methacton SD

Printed 10/27/2016 10:25:52 AM

General Fund (10)	
3000 Operation of Non-Instructional Services	<u>Total</u>
100 <u>Personnel Services – Salaries</u>	
100 Personnel Services – Salaries	789,128.43
Total Personnel Services – Salaries	\$789,128.43
200 <u>Personnel Services – Employee Benefits</u>	
220 Social Security Contributions	60,168.26
230 PSERS Retirement Contributions	181,959.44
Total Personnel Services – Employee Benefits	\$242,127.70
300 <u>Purchased Professional and Technical Services</u>	
329 Professional Educational Services – Other	995.37
330 Other Professional Services	74,597.60
390 Other Purchased Professional and Technical Services	728.00
Total Purchased Professional and Technical Services	\$76,320.97
400 <u>Purchased Property Services</u>	
410 Cleaning Services	4,671.24
430 Repairs and Maintenance Services	12,126.61
440 Rentals	3,000.00
Total Purchased Property Services	\$19,797.85
500 <u>Other Purchased Services</u>	
510 Student Transportation Services	339.78
520 Insurance – General	5,898.00
549 Other Advertising/Public Relations	300.00
580 Travel	14,892.98
591 Services Purchased Locally	43,387.00
592 Services Purchased From Another LEA Within the State	6,195.50
593 Services Purchased From Another LEA Outside the State	8,585.73
599 Other Miscellaneous Purchased Services	36.00
Total Other Purchased Services	\$79,634.99
600 <u>Supplies</u>	
610 General Supplies	101,516.64
630 Food	105.00
Total Supplies	\$101,621.64
700 <u>Property</u>	
750 Equipment – Original and Additional	5,059.50
760 Equipment – Replacement	26,855.72
Total Property	\$31,915.22
800 <u>Other Objects</u>	
810 Dues and Fees	40,502.67
890 Miscellaneous Expenditures	750.03
Total Other Objects	\$41,252.70
Total 3000 Operation of Non-Instructional Services	\$1,381,799.50

LEA : 123465303 Methacton SD

Printed 10/27/2016 10:25:52 AM

General Fund (10)				
3200 Student Activities				
	<u>Elementary</u>	<u>Secondary</u>	<u>Federal</u>	<u>Total</u>
100 <u>Personnel Services – Salaries</u>				
100 Personnel Services – Salaries				788,428.83
Total Personnel Services – Salaries				\$788,428.83
200 <u>Personnel Services – Employee Benefits</u>				
220 Social Security Contributions				60,114.74
230 PSERS Retirement Contributions				181,778.66
Total Personnel Services – Employee Benefits				\$241,893.40
300 <u>Purchased Professional and Technical Services</u>				
329 Professional Educational Services – Other				995.37
330 Other Professional Services				74,597.60
390 Other Purchased Professional and Technical Services				728.00
Total Purchased Professional and Technical Services				\$76,320.97
400 <u>Purchased Property Services</u>				
410 Cleaning Services				4,671.24
430 Repairs and Maintenance Services				12,126.61
440 Rentals				3,000.00
Total Purchased Property Services				\$19,797.85
500 <u>Other Purchased Services</u>				
510 Student Transportation Services				339.78
520 Insurance – General				5,898.00
549 Other Advertising/Public Relations				300.00
580 Travel				14,892.98
591 Services Purchased Locally				43,387.00
592 Services Purchased From Another LEA Within the State				6,195.50
593 Services Purchased From Another LEA Outside the State				8,585.73
599 Other Miscellaneous Purchased Services				36.00
Total Other Purchased Services				\$79,634.99
600 <u>Supplies</u>				
610 General Supplies				96,934.01
630 Food				105.00
Total Supplies				\$97,039.01
700 <u>Property</u>				
750 Equipment – Original and Additional				5,059.50
760 Equipment – Replacement				26,855.72
Total Property				\$31,915.22
800 <u>Other Objects</u>				
810 Dues and Fees				40,502.67
890 Miscellaneous Expenditures				750.03
Total Other Objects				\$41,252.70
Total 3200 Student Activities				\$1,376,282.97

LEA : 123465303 Methacton SD

Printed 10/27/2016 10:25:52 AM

General Fund (10)

3300 Community Services	<u>Elementary</u>	<u>Secondary</u>	<u>Federal</u>	<u>Total</u>
100 <u>Personnel Services – Salaries</u>				
100 Personnel Services – Salaries			699.60	699.60
Total Personnel Services – Salaries			\$699.60	\$699.60
200 <u>Personnel Services – Employee Benefits</u>				
220 Social Security Contributions			53.52	53.52
230 PSERS Retirement Contributions			180.78	180.78
Total Personnel Services – Employee Benefits			\$234.30	\$234.30
600 <u>Supplies</u>				
610 General Supplies			3,582.63	4,582.63
Total Supplies			\$3,582.63	\$4,582.63
Total 3300 Community Services			\$4,516.53	\$5,516.53

LEA : 123465303 Methacton SD

Printed 10/27/2016 10:25:53 AM

General Fund (10)

5000 Other Expenditures and Financing Uses		<u>Total</u>
800 <u>Other Objects</u>		
830 Interest		2,899,194.91
880 Refunds of Prior Years' Receipts		892.84
Total Other Objects		\$2,900,087.75
900 <u>Other Uses of Funds</u>		
910 Redemption of Principal		7,080,058.70
939 Other Fund Transfers		1,200,000.00
Total Other Uses of Funds		\$8,280,058.70
Total 5000 Other Expenditures and Financing Uses		\$11,180,146.45

LEA : 123465303 Methacton SD

Printed 10/27/2016 10:25:53 AM

General Fund (10)

5100 Debt Service / Other Expenditures and Financing Uses	<u>Elementary</u>	<u>Secondary</u>	<u>Federal</u>	<u>Total</u>
800 <u>Other Objects</u>				
830 Interest				2,899,194.91
880 Refunds of Prior Years' Receipts				892.84
Total Other Objects				\$2,900,087.75
900 <u>Other Uses of Funds</u>				
910 Redemption of Principal				7,080,058.70
Total Other Uses of Funds				\$7,080,058.70
Total 5100 Debt Service / Other Expenditures and Financing Uses				\$9,980,146.45

LEA : 123465303 Methacton SD

Printed 10/27/2016 10:25:53 AM

General Fund (10)

5110 Debt Service	<u>Elementary</u>	<u>Secondary</u>	<u>Federal</u>	<u>Total</u>
800 <u>Other Objects</u>				
830 Interest				2,899,194.91
Total Other Objects				\$2,899,194.91
900 <u>Other Uses of Funds</u>				
910 Redemption of Principal				7,080,058.70
Total Other Uses of Funds				\$7,080,058.70
Total 5110 Debt Service				\$9,979,253.61

LEA : 123465303 Methacton SD

Printed 10/27/2016 10:25:53 AM

General Fund (10)

5130 Refund of Prior Year Revenues / Receipts	<u>Elementary</u>	<u>Secondary</u>	<u>Federal</u>	<u>Total</u>
800 <u>Other Objects</u>				
880 Refunds of Prior Years' Receipts				892.84
Total Other Objects				\$892.84
Total 5130 Refund of Prior Year Revenues / Receipts				\$892.84

LEA : 123465303 Methacton SD

Printed 10/27/2016 10:25:53 AM

General Fund (10)

5200 Interfund Transfers – Out	<u>Elementary</u>	<u>Secondary</u>	<u>Federal</u>	<u>Total</u>
900 <u>Other Uses of Funds</u>				
939 Other Fund Transfers				1,200,000.00
Total Other Uses of Funds				\$1,200,000.00
Total 5200 Interfund Transfers – Out				\$1,200,000.00

LEA : 123465303 Methacton SD

Printed 10/27/2016 10:25:53 AM

General Fund (10)

5230 Capital Projects Fund Transfers	<u>Elementary</u>	<u>Secondary</u>	<u>Federal</u>	<u>Total</u>
900 <u>Other Uses of Funds</u>				
939 Other Fund Transfers				1,200,000.00
Total Other Uses of Funds				\$1,200,000.00
Total 5230 Capital Projects Fund Transfers				\$1,200,000.00

LEA : 123465303 Methacton SD

Printed 10/27/2016 10:25:51 AM

Other Capital Projects Fund (39)

2000 Support Services

Total

800	<u>Other Objects</u>	
810	Dues and Fees	404.07
820	Claims and Judgments Against the LEA	20,000.00
890	Miscellaneous Expenditures	331,753.12
Total Other Objects		\$352,157.19
Total 2000 Support Services		\$352,157.19

LEA : 123465303 Methacton SD

Printed 10/27/2016 10:25:51 AM

Other Capital Projects Fund (39)

2300 Support Services – Administration

Elementary Secondary Federal Total

800 <u>Other Objects</u>				
810 Dues and Fees				404.07
820 Claims and Judgments Against the LEA				20,000.00
890 Miscellaneous Expenditures				331,753.12
Total Other Objects				\$352,157.19
Total 2300 Support Services – Administration				\$352,157.19

LEA : 123465303 Methacton SD

Printed 10/27/2016 10:25:51 AM

Other Capital Projects Fund (39)

2310 Board Services	<u>Elementary</u>	<u>Secondary</u>	<u>Federal</u>	<u>Total</u>
800 <u>Other Objects</u>				
810 Dues and Fees				404.07
820 Claims and Judgments Against the LEA				20,000.00
Total Other Objects				\$20,404.07
Total 2310 Board Services				\$20,404.07

Total Other Objects	\$331,753.12
Total 2390 Other Administration Services	\$331,753.12

LEA : 123465303 Methacton SD

Printed 10/27/2016 10:25:53 AM

Other Capital Projects Fund (39)

4000 Facilities Acquisition, Construction and Improvement Services		<u>Total</u>
300 <u>Purchased Professional and Technical Services</u>		
330 Other Professional Services	620,865.21	
Total Purchased Professional and Technical Services	\$620,865.21	
400 <u>Purchased Property Services</u>		
440 Rentals	1,382.50	
450 Construction Services	6,639,427.25	
Total Purchased Property Services	\$6,640,809.75	
500 <u>Other Purchased Services</u>		
520 Insurance – General	25,568.00	
Total Other Purchased Services	\$25,568.00	
600 <u>Supplies</u>		
610 General Supplies	2,233.40	
Total Supplies	\$2,233.40	
700 <u>Property</u>		
750 Equipment – Original and Additional	376,981.00	
Total Property	\$376,981.00	
Total 4000 Facilities Acquisition, Construction and Improvement Services	\$7,666,457.36	

LEA : 123465303 Methacton SD

Printed 10/27/2016 10:25:53 AM

Other Capital Projects Fund (39)

4200 Existing Site Improvement Services	<u>Elementary</u>	<u>Secondary</u>	<u>Federal</u>	<u>Total</u>
300 <u>Purchased Professional and Technical Services</u>				
330 Other Professional Services				332,467.41
Total Purchased Professional and Technical Services				\$332,467.41
400 <u>Purchased Property Services</u>				
440 Rentals				1,382.50
450 Construction Services				4,333,335.78
Total Purchased Property Services				\$4,334,718.28
600 <u>Supplies</u>				
610 General Supplies				2,233.40
Total Supplies				\$2,233.40
700 <u>Property</u>				
750 Equipment – Original and Additional				376,981.00
Total Property				\$376,981.00
Total 4200 Existing Site Improvement Services				\$5,046,400.09

LEA : 123465303 Methacton SD

Printed 10/27/2016 10:25:53 AM

Other Capital Projects Fund (39)

4600 Existing Building Improvement Services

Elementary Secondary Federal Total

300 Purchased Professional and Technical Services

330 Other Professional Services 288,397.80

Total Purchased Professional and Technical Services \$288,397.80

400 Purchased Property Services

450 Construction Services 2,306,091.47

Total Purchased Property Services \$2,306,091.47

500 Other Purchased Services

520 Insurance – General 25,568.00

Total Other Purchased Services \$25,568.00

Total 4600 Existing Building Improvement Services \$2,620,057.27

LEA : 123465303 Methacton SD

Printed 10/27/2016 10:25:54 AM

Other Capital Projects Fund (39)

5000 Other Expenditures and Financing Uses

Total

800 <u>Other Objects</u>	
830 Interest	1,196.65
Total Other Objects	\$1,196.65
900 <u>Other Uses of Funds</u>	
910 Redemption of Principal	31,895,320.31
Total Other Uses of Funds	\$31,895,320.31
Total 5000 Other Expenditures and Financing Uses	\$31,896,516.96

LEA : 123465303 Methacton SD

Printed 10/27/2016 10:25:54 AM

Other Capital Projects Fund (39)

5100 Debt Service / Other Expenditures and Financing Uses	<u>Elementary</u>	<u>Secondary</u>	<u>Federal</u>	<u>Total</u>
800 <u>Other Objects</u>				
830 Interest				1,196.65
Total Other Objects				\$1,196.65
900 <u>Other Uses of Funds</u>				
910 Redemption of Principal				31,895,320.31
Total Other Uses of Funds				\$31,895,320.31
Total 5100 Debt Service / Other Expenditures and Financing Uses				\$31,896,516.96

LEA : 123465303 Methacton SD

Printed 10/27/2016 10:25:54 AM

Other Capital Projects Fund (39)

5110 Debt Service	<u>Elementary</u>	<u>Secondary</u>	<u>Federal</u>	<u>Total</u>
800 <u>Other Objects</u>				
830 Interest				1,196.65
Total Other Objects				\$1,196.65
Total 5110 Debt Service				\$1,196.65

Page 136

LEA : 123465303 Methacton SD

Printed 10/27/2016 10:25:56 AM

	<u>General Fund(10)</u>	<u>Public Purpose Trust(27)</u>	<u>Other Compt Approved</u> <u>(28)</u>	<u>Athletic / Activity(29)</u>	<u>Capital Reserve (690.</u> <u>1850)(31)</u>
1000 <u>Instruction</u>					
1100 Regular Programs - Elementary / Secondary	37,762,776.37				
1200 Special Programs - Elementary / Secondary	14,104,457.07				
1300 Vocational Education	2,545,911.17				
1400 Other Instructional Programs - Elementary / Secondary	351,729.87				
1500 Nonpublic School Programs	2,106.12				
1600 Adult Education Programs	149,008.74				
Total Instruction	\$54,915,989.34				
2000 <u>Support Services</u>					
2100 Support Services - Students	4,033,113.85				
2200 Support Services - Instructional Staff	2,048,596.33				
2300 Support Services - Administration	6,120,325.40				
2400 Support Services - Pupil Health	1,705,614.20				
2500 Support Services - Business	1,143,828.49				
2600 Operation and Maintenance of Plant Services	7,842,512.15				
2700 Student Transportation Services	6,675,910.18				
2800 Support Services - Central	1,776,108.19				
2900 Other Support Services	76,854.57				
Total Support Services	\$31,422,863.36				
3000 <u>Operation of Non-Instructional Services</u>					
3200 Student Activities	1,376,282.97				
3300 Community Services	5,516.53				
Total Operation of Non-Instructional Services	\$1,381,799.50				
4000 <u>Facilities Acquisition, Construction and Improvement Services</u>					
4200 Existing Site Improvement Services					
4600 Existing Building Improvement Services					
Total Facilities Acquisition, Construction and Improvement Services					
5000 <u>Other Expenditures and Financing Uses</u>					
5100 Debt Service / Other Expenditures and Financing Uses	9,980,146.45				
5200 Interfund Transfers - Out	1,200,000.00				
Total Other Expenditures and Financing Uses	\$11,180,146.45				
TOTAL ACTUAL EXPENDITURES & OTHER FINANCING USES	\$98,900,798.65				

LEA : 123465303 Methacton SD

Printed 10/27/2016 10:25:56 AM

	<u>Capital Reserve (1431)(32)</u>	<u>Other Capital Projects Fund(39)</u>	<u>Debt Service(40)</u>	<u>Permanent(90)</u>	<u>Total</u>
1000 Instruction					
1100 Regular Programs - Elementary / Secondary					37,762,776.37
1200 Special Programs - Elementary / Secondary					14,104,457.07
1300 Vocational Education					2,545,911.17
1400 Other Instructional Programs - Elementary / Secondary					351,729.87
1500 Nonpublic School Programs					2,106.12
1600 Adult Education Programs					149,008.74
Total Instruction					\$54,915,989.34
2000 Support Services					
2100 Support Services - Students					4,033,113.85
2200 Support Services - Instructional Staff					2,048,596.33
2300 Support Services - Administration		352,157.19			6,472,482.59
2400 Support Services - Pupil Health					1,705,614.20
2500 Support Services - Business					1,143,828.49
2600 Operation and Maintenance of Plant Services					7,842,512.15
2700 Student Transportation Services					6,675,910.18
2800 Support Services - Central					1,776,108.19
2900 Other Support Services					76,854.57
Total Support Services		\$352,157.19			\$31,775,020.55
3000 Operation of Non-Instructional Services					
3200 Student Activities					1,376,282.97
3300 Community Services					5,516.53
Total Operation of Non-Instructional Services					\$1,381,799.50
4000 Facilities Acquisition, Construction and Improvement Services					
4200 Existing Site Improvement Services		5,046,400.09			5,046,400.09
4600 Existing Building Improvement Services		2,620,057.27			2,620,057.27
Total Facilities Acquisition, Construction and Improvement Services		\$7,666,457.36			\$7,666,457.36
5000 Other Expenditures and Financing Uses					
5100 Debt Service / Other Expenditures and Financing Uses		31,896,516.96			41,876,663.41
5200 Interfund Transfers - Out					1,200,000.00
Total Other Expenditures and Financing Uses		\$31,896,516.96			\$43,076,663.41
TOTAL ACTUAL EXPENDITURES & OTHER FINANCING USES		\$39,915,131.51			\$138,815,930.16

LEA : 123465303 Methacton SD

Printed 10/27/2016 10:26:02 AM

PSERS Salary Data (Salary Data should relate to the General Fund only)

Amount	Description	Amount
	Total Salary Base for salaries subject to PSERS withholding	40,577,178.32
	Total Federally Funded salaries subject to PSERS withholding	1,050,420.19

Title I Expenditure Data

Amount	Description	Amount
	Expenditures Funded with Current Title I Funds	162,558.00
	Expenditures Funded with Carry over Title I Funds	
Total	Title I Expenditure Data	\$162,558.00

Title I ARRA Amount

Amount	Description	Amount
	Portion of Total Title I Expenditures funded with ARRA Title I	

Benefits for Staff Relative to Collective Bargaining Agreements

	OBJECT	COVERED	NOT COVERED	TOTAL
10 General Fund				
	211 Medical Insurance			
	212 Dental Insurance			
	215 Eye Care Insurance	44,564.40		44,564.40
	216 Prescription Insurance			
	271 Self-Insurance Medical Benefits	5,921,705.43		5,921,705.43
	272 Self-Insurance Dental Benefits	439,810.54		439,810.54
	275 Self-Insurance Eye Care Benefits			
	276 Self-Insurance Prescription Benefits	2,120,738.69		2,120,738.69
	FUND TOTAL	\$8,526,819.06		\$8,526,819.06
50 Enterprise Fund	No Self Insurance data to report			
	211 Medical Insurance			
	212 Dental Insurance			
	215 Eye Care Insurance			
	216 Prescription Insurance			
	271 Self-Insurance Medical Benefits			
	272 Self-Insurance Dental Benefits			
	275 Self-Insurance Eye Care Benefits			
	276 Self-Insurance Prescription Benefits			
	FUND TOTAL			
60 Internal Service Fund	No Self Insurance data to report			
	211 Medical Insurance			
	212 Dental Insurance			
	215 Eye Care Insurance			
	216 Prescription Insurance			
	271 Self-Insurance Medical Benefits			
	272 Self-Insurance Dental Benefits			
	275 Self-Insurance Eye Care Benefits			
	276 Self-Insurance Prescription Benefits			
	FUND TOTAL			
Total of All Funds		\$8,526,819.06		\$8,526,819.06

LEA : 123465303 Methacton SD

Printed 10/27/2016 10:26:04 AM

Function	Special Education (Prior Year)	Nonspecial Education (Prior Year)	Total (Prior Year)	Special Education (Current Year)	Nonspecial Education (Current Year)	Total (Current Year)
2120 Guidance Services	214,350.94	1,929,158.42	2,143,509.36	228,431.26	2,055,881.36	2,284,312.62
2140 Psychological Services	401,883.08	100,470.77	502,353.85	405,277.02	101,319.26	506,596.28
2150 Speech Pathology and Audiology Services						
2160 Social Work Services	8,444.43	187,937.57	196,382.00	6,925.00	131,575.00	138,500.00
2260 Instruction and Curriculum Development Services	27,576.81	523,959.32	551,536.13	23,460.46	445,748.66	469,209.12
2350 Legal and Accounting Services	152,579.75	188,227.94	340,807.69	103,831.99	144,417.65	248,249.64
2420 Medical Services	74,961.10	8,329.01	83,290.11	518,917.58	57,657.51	576,575.09
2440 Nursing Services	103,761.12	933,850.04	1,037,611.16	112,871.91	1,015,847.20	1,128,719.11
2700 Student Transportation Services	686,308.77	6,176,778.91	6,863,087.68	667,591.02	6,008,319.16	6,675,910.18
Total	\$1,669,866.00	\$10,048,711.98	\$11,718,577.98	\$2,067,306.24	\$9,960,765.80	\$12,028,072.04

LEA : 123465303 Methacton SD

Printed 10/27/2016 10:26:04 AM

(PRINCIPAL AMOUNTS ONLY)

ALL GOVERNMENTAL FUND TYPES

	Short-Term Borrowing	General Obligation Bonds/Notes	Authority Building Obligations	Other Long-Term Debt	Other Post- Employment Benefits (OPEB)	Compensated Absences	Net Pension Liability	Total
1. Debt at Beginning of Fiscal Year		87,905,000.00		313,280.00	4,322,665.00	2,448,348.00	141,580,000.00	236,569,293.00
2. Additional Debt Incurred During Year		28,080,000.00		2,462,377.00	397,019.00	71,774.00	234,000.00	31,245,170.00
3. Retirements and Repayments		35,580,000.00		485,059.00				36,065,059.00
4. Debt at End of Fiscal Year		80,405,000.00		2,290,598.00	4,719,684.00	2,520,122.00	141,814,000.00	231,749,404.00
5. Accreted Interest at End Of Fiscal Year								
6. Total Debt and Accreted Interest		80,405,000.00		2,290,598.00	4,719,684.00	2,520,122.00	141,814,000.00	231,749,404.00
7. Current Portion P&I - Due within 1 year		9,449,046.62		191,010.00		126,006.00		9,766,062.62
8. Interest Paid during current fiscal year		2,868,781.00		31,612.00				2,900,393.00

(PRINCIPAL AMOUNTS ONLY)

ALL PROPRIETARY FUND TYPES

1. Debt at Beginning of Fiscal Year
2. Additional Debt Incurred During Year
3. Retirements and Repayments
4. Debt at End of Fiscal Year
5. Accreted Interest at End Of Fiscal Year
6. Total Debt and Accreted Interest
7. Current Portion P&I - Due within 1 year
8. Interest Paid during current fiscal year

LEA : 123465303 Methacton SD

Printed 10/27/2016 10:26:04 AM

Total Principal and Interest Payments Made by Your School - All Funds

Function	Fund		Principal (910)	Principal (920)	Interest (830)	Total (Principal +Interest)	Misc Other Uses (990)
5110	10	General Fund	7,080,058.70		2,899,194.91	9,979,253.61	
5110	20	Special Revenue Funds					
5110	30	Capital Projects Funds			1,196.65	1,196.65	
5110	40	Debt Service Fund					
5110	90	Permanent Fund					
5120	10	General Fund					
5120	20	Special Revenue Funds					
5120	30	Capital Projects Funds	31,895,320.31			31,895,320.31	
5120	40	Debt Service Fund					
Total Debt Payments - Governmental Funds			\$38,975,379.01		\$2,900,391.56	\$41,875,770.57	

Function	Fund		Principal (910)	Principal (920)	Interest (830)	Total (Principal +Interest)
5110	50	Enterprise Fund				
5110	60	Internal Service Fund				
5120	50	Enterprise Fund				
5120	60	Internal Service Fund				
Total Debt Payments - Proprietary Funds						

LEA : 123465303 Methacton SD

Printed 10/27/2016 10:26:04 AM

Bond Details
Governmental Funds

Debt Category	Debt Issue Date (MM/YYYY)	Principal Amounts Only				Current Portion Due Within One Year (Principal and Interest)	Interest Paid During Fiscal Year
		Debt at Beginning of Fiscal Year	Additions	Reductions / Repayments	Debt at End of Fiscal Year		
General Obligation Bonds/Notes – CIB	08/2003	2,500,000.00		2,500,000.00			2,446.00
General Obligation Bonds/Notes – CIB	01/2009	28,990,000.00		28,990,000.00			1,657,840.00
General Obligation Bonds/Notes – CIB	09/2011	9,075,000.00		905,000.00	8,170,000.00	1,130,401.26	226,201.00
General Obligation Bonds/Notes – CIB	10/2012	1,500,000.00			1,500,000.00	60,000.00	19,395.00
General Obligation Bonds/Notes – CIB	06/2012	8,950,000.00		1,015,000.00	7,935,000.00	2,771,950.00	175,925.00
General Obligation Bonds/Notes – CIB	12/2012	7,125,000.00		825,000.00	6,300,000.00	940,631.25	112,437.00
General Obligation Bonds/Notes – CIB	12/2012	6,515,000.00		655,000.00	5,860,000.00	2,014,650.00	102,225.00
General Obligation Bonds/Notes – CIB	06/2013	4,220,000.00		5,000.00	4,215,000.00	104,137.50	99,173.00
General Obligation Bonds/Notes – CIB	06/2013	5,475,000.00		5,000.00	5,470,000.00	194,145.00	189,180.00
General Obligation Bonds/Notes – CIB	06/2013	2,530,000.00		5,000.00	2,525,000.00	80,828.76	75,864.00
General Obligation Bonds/Notes – CIB	01/2015	5,495,000.00		5,000.00	5,490,000.00	150,408.00	68,070.00
General Obligation Bonds/Notes – CIB	05/2015	3,285,000.00		350,000.00	2,935,000.00	573,400.00	89,266.00
General Obligation Bonds/Notes – CIB	05/2015	2,245,000.00		320,000.00	1,925,000.00	231,725.00	50,759.00
General Obligation Bonds/Notes – CIB	03/2016		28,080,000.00		28,080,000.00	1,196,769.85	
Other Post-Employment Benefits (OPEB)		4,322,665.00	397,019.00		4,719,684.00		
Compensated Absences		2,448,348.00	71,774.00		2,520,122.00	126,006.00	
Net Pension Liability		141,580,000.00	234,000.00		141,814,000.00		
Other Long Term Debt/Liabilities		313,280.00	2,462,377.00	485,059.00	2,290,598.00	191,010.00	31,612.00
Totals for Debt Entered:		\$236,569,293.00	\$31,245,170.00	\$36,065,059.00	\$231,749,404.00	\$9,766,062.62	\$2,900,393.00

LEA : 123465303 Methacton SD

General Fund (10)

Section 1: Tuition/Purchased Services as Reported within Expenditure Detail	Amount
Tuition Reported in General Fund Expenditures 1000-560	3,496,226.57
Purchased Services in General Fund Expenditures 1000-594 and 1000-597	
Section 1 Total	\$3,496,226.57

Section 2: Tuition Paid to Institution Types During Fiscal Year	Tuition Paid For Nonspecial Education	Tuition Paid For Special Education	Total
1 1306 Institutions			
2 Institutionalized Children's Programs			
3 Juveniles Incarcerated in Adult Facilities			
4 Residential Treatment Facilities			
5 Other Local Education Agencies	151,069.75	249,352.63	400,422.38
6 Brick and Mortar Charter Schools	301,071.38	241,767.42	542,838.80
7 Cyber Charter Schools	505,981.60	219,459.08	725,440.68
8 Career and Technology Centers	1,318,881.81	4,793.88	1,323,675.69
9 Approved Private Schools		287,679.16	287,679.16
10 PA Chartered Schools for the Deaf and Blind			
11 Private Residential Rehabilitative Institutions	6,189.75	202,777.04	208,966.79
12 Juvenile Detention Centers	4,668.07		4,668.07
13 Special Program Jointures			
14 Other Tuition Not Included Elsewhere In This Section		2,535.00	2,535.00
Section 2 Total	\$2,287,862.36	\$1,208,364.21	\$3,496,226.57

LEA : 123465303 Methacton SD

Printed 10/27/2016 10:26:06 AM

Food Service / Cafeteria Operations Fund (51)

		<u>Total</u>
3000 Operation of Non-Instructional Services		
400 <u>Purchased Property Services</u>		
430	Repairs and Maintenance Services	2,785.00
Total Purchased Property Services		\$2,785.00
500 <u>Other Purchased Services</u>		
570	Food Service Management	1,306,454.91
Total Other Purchased Services		\$1,306,454.91
600 <u>Supplies</u>		
610	General Supplies	(1,227.87)
630	Food	55,734.44
Total Supplies		\$54,506.57
700 <u>Property</u>		
740	Depreciation	3,873.32
Total Property		\$3,873.32
Total 3000 Operation of Non-Instructional Services		\$1,367,619.80

LEA : 123465303 Methacton SD

Printed 10/27/2016 10:26:06 AM

Food Service / Cafeteria Operations Fund (51)

3100 Food Services	<u>Elementary</u>	<u>Secondary</u>	<u>Federal</u>	<u>Total</u>
400 <u>Purchased Property Services</u>				
430 Repairs and Maintenance Services				2,785.00
Total Purchased Property Services				\$2,785.00
500 <u>Other Purchased Services</u>				
570 Food Service Management				1,306,454.91
Total Other Purchased Services				\$1,306,454.91
600 <u>Supplies</u>				
610 General Supplies				(1,227.87)
630 Food				55,734.44
Total Supplies				\$54,506.57
700 <u>Property</u>				
740 Depreciation				3,873.32
Total Property				\$3,873.32
Total 3100 Food Services				\$1,367,619.80

	<u>Food Service(51)</u>	<u>Child Care Operations(52)</u>	<u>Other Enterprise(58)</u>	<u>Internal Service(60)</u>	<u>Total</u>
3000 <u>Operation of Non-Instructional Services</u>					
3100 Food Services	1,367,619.80				1,367,619.80
Total Operation of Non-Instructional Services	\$1,367,619.80				\$1,367,619.80
TOTAL ACTUAL EXPENDITURES & OTHER FINANCING USES	\$1,367,619.80				\$1,367,619.80