

LEA Name : Methacton SD
Address : 1001 Kriebel Mill Rd
Eagleville , PA 19403

County : Montgomery
AUN Number : 123465303
LEA Type : SD

Annual Financial Report Accuracy Certification Statement

For Fiscal Year Ending
6/30/2018

Pennsylvania Department of Education

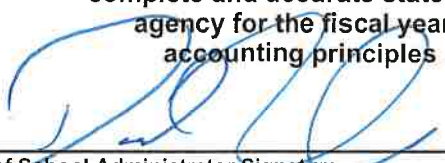
&

Office of Comptroller Operations

PDE-2056: Intermediate Unit

PDE-2057: School District, AVTS/CTC, Charter School,
and Special Program Jointure

CERTIFICATION: By signing this page I agree that the electronic data submitted is a complete and accurate statement of the financial operations and status of the local education agency for the fiscal year. It has been prepared in accordance with generally accepted accounting principles and established Commonwealth of PA reporting guidelines.



Chief School Administrator Signature

Date

10/22/2018



Board Secretary Signature

Date

10/22/2018

Danielle Penza

Contact Person

dpenza@methacton.org

Contact Person E-mail Address

(610)489-5000

Ext :15005

Contact Person Telephone Number

(610)489-5019

Contact Person Fax Number

Audit Certification
Annual Financial Report:
For Fiscal Year Ending 6/30/2018
(Pursuant to PA School Code Section 218(b))

LEA Name : Methacton SD
AUN Number : 123465303
County : Montgomery

Audit Certification Due: 12/31/2018

This certification is applicable to the Annual Financial Report data submitted
through the Consolidated Financial Reporting System on: 10/22/18

Date

Auditing Firm:

Maillie
140 Whitaker Avenue

Mont Clare , PA , 19453-

Auditor Contact Name: Dale Umbenhauer

Auditor Phone: (610)482-3173

Auditor E-mail: dumbenhauer@maillie.com

CERTIFICATION: By signing this page I agree that the financial statements of the school have been properly audited as noted above pursuant to Article XXIV, and in the auditor's professional opinion, the Annual Financial Report (PDE-2057) submitted on the date referenced is materially consistent with the audited financial statements.

Chief School Administrator

Signature 

Date 10/23/2018

Board Secretary

Signature  Date 10/22/18

Danielle Penza

Contact Person

dpenza@methacton.org

Contact Person E-mail Address

(610)489-5000

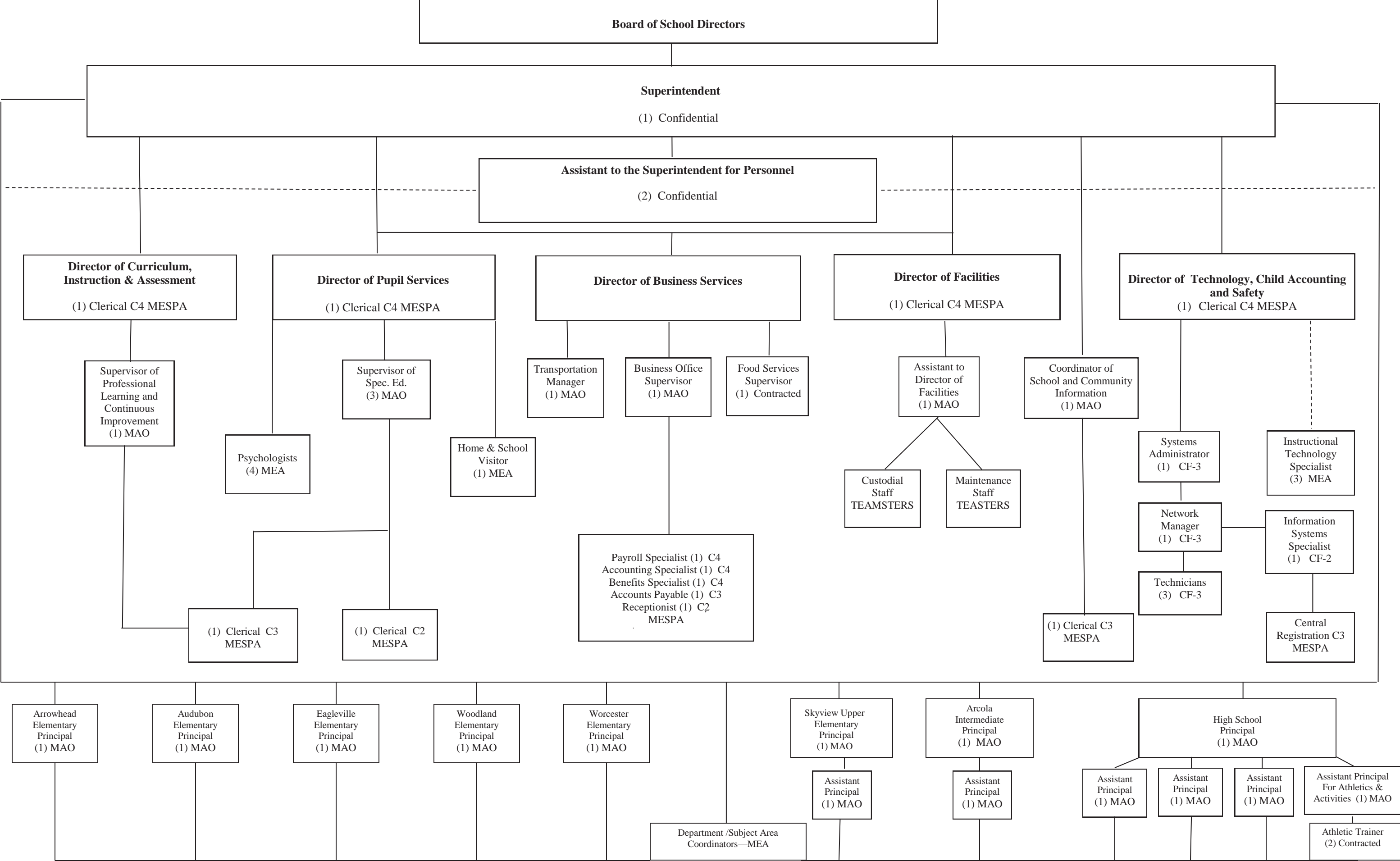
Ext :15005

Contact Person Telephone Number

(610)489-5019

Contact Person Fax Number

METHACTON SCHOOL DISTRICT
ORGANIZATIONAL CHART



<u>Val Number</u>	<u>Description</u>	<u>Justification</u>
50160	SOIN: All Governmental Fund General Obligation Bonds must include an amount for Interest Paid during Fiscal Year. Correct data or enter a justification.	GOB 2018 and GOB 2018A settled on 6/18/18. These were included as debt additions, but no interest was paid during 2017-18. The first interest payments were made on 9/15/18.
50430	SESS - 2160 Social Work Services: SESS Schedule amounts for Special Education vary from prior year by 40% or more. Correct the data or enter a justification. SESS Schedule 2160: \$10,218.50 Prior Year SESS Schedule 2160: \$7,271.25	Increase from 3 social workers in 16-17 to 4 in 17-18.

LEA : 123465303 Methacton SD

Printed 10/23/2018 2:38:24 PM

Amounts Expressed in Whole Dollars		<u>General Fund</u> <u>(10)</u>	<u>Public Purpose Trust</u> <u>(27)</u>	<u>Other Compt Approved</u> <u>(28)</u>	<u>Athletic / Activity</u> <u>(29)</u>	<u>Capital Reserve (690.</u> <u>1850)</u> <u>(31)</u>
Assets And Deferred Outflows Of Resources						
Assets						
0100	Cash and Cash Equivalents	20,047,240				
0110	Investments					
0120	Taxes Receivable	2,235,442				
0130	Due From Other Funds	375,087				
0141	Due From Other Governments					
0142	State Revenue Receivable	3,137,971				
0143	Federal Revenue Receivable	74,144				
0145	Other Intergovernmental Revenue Receivable					
0146	Due from Primary Government					
0147	Due from Component Unit					
0150	Other Receivables	126,971				
0170	Inventories					
0180	Prepaid Expenses (Expenditures)	1,496,355				
0190	Other Current Assets					
Total Assets		\$27,493,210				
0910	Deferred Outflows of Resources					
Total Assets And Deferred Outflows Of Resources		\$27,493,210				

LEA : 123465303 Methacton SD

Printed 10/23/2018 2:38:24 PM

Amounts Expressed in Whole Dollars		<u>Capital Reserve (1431)</u> <u>(32)</u>	<u>Other Capital Projects</u> <u>Fund</u> <u>(39)</u>	<u>Debt Service</u> <u>(40)</u>	<u>Permanent</u> <u>(90)</u>	<u>Total Governmental</u> <u>Funds</u>
Assets And Deferred Outflows Of Resources						
Assets						
0100	Cash and Cash Equivalents		8,620,005			28,667,245
0110	Investments					
0120	Taxes Receivable					2,235,442
0130	Due From Other Funds					375,087
0141	Due From Other Governments					
0142	State Revenue Receivable					3,137,971
0143	Federal Revenue Receivable					74,144
0145	Other Intergovernmental Revenue Receivable					
0146	Due from Primary Government					
0147	Due from Component Unit					
0150	Other Receivables					126,971
0170	Inventories					
0180	Prepaid Expenses (Expenditures)					1,496,355
0190	Other Current Assets					
Total Assets			\$8,620,005			\$36,113,215
0910	Deferred Outflows of Resources					
Total Assets And Deferred Outflows Of Resources			\$8,620,005			\$36,113,215

LEA : 123465303 Methacton SD

Printed 10/23/2018 2:38:24 PM

Amounts Expressed in Whole Dollars		<u>General Fund</u> <u>(10)</u>	<u>Public Purpose Trust</u> <u>(27)</u>	<u>Other Compt Approved</u> <u>(28)</u>	<u>Athletic / Activity</u> <u>(29)</u>	<u>Capital Reserve (690.</u> <u>1850)</u> <u>(31)</u>
Liabilities And Deferred Inflows Of Resources And Fund Balances						
Liabilities						
0400	Due to Other Funds	3,792				
0411	Due to Other Governments					
0412	Due to Primary Government					
0413	Due to Component Unit					
0420	Accounts Payable	1,686,461				
0430	Contracts Payable					
0440	Current Portion of Long-Term Debt	140,097				
0450	Short-Term Payables					
0461	Accrued Salaries and Benefits	3,600,394				
0462	Payroll Deductions and Withholding	4,735,997				
0480	Unearned Revenues	80,783				
0490	Other Current Liabilities	4,108,862				
Total Liabilities		\$14,356,386				
0950	Deferred Inflows of Resources	1,593,458				
Fund Balances						
0810	Nonspendable Fund Balance	1,496,355				
0820	Restricted Fund Balance					
0830	Committed Fund Balance	2,389,141				
0840	Assigned Fund Balance					
0850	Unassigned Fund Balance	7,657,870				
Total Fund Balances		\$11,543,366				
Total Liabilities, Deferred Inflows Of Resources And Fund Balances		\$27,493,210				

LEA : 123465303 Methacton SD

Printed 10/23/2018 2:38:24 PM

Amounts Expressed in Whole Dollars		<u>Capital Reserve (1431)</u> <u>(32)</u>	<u>Other Capital Projects</u> <u>Fund</u> <u>(39)</u>	<u>Debt Service</u> <u>(40)</u>	<u>Permanent</u> <u>(90)</u>	<u>Total Governmental</u> <u>Funds</u>
Liabilities And Deferred Inflows Of Resources And Fund Balances						
Liabilities						
0400	Due to Other Funds		375,087			378,879
0411	Due to Other Governments					
0412	Due to Primary Government					
0413	Due to Component Unit					
0420	Accounts Payable		1,017,638			2,704,099
0430	Contracts Payable					
0440	Current Portion of Long-Term Debt					140,097
0450	Short-Term Payables					
0461	Accrued Salaries and Benefits					3,600,394
0462	Payroll Deductions and Withholding					4,735,997
0480	Unearned Revenues					80,783
0490	Other Current Liabilities					4,108,862
Total Liabilities			\$1,392,725			\$15,749,111
0950	Deferred Inflows of Resources					1,593,458
Fund Balances						
0810	Nonspendable Fund Balance					1,496,355
0820	Restricted Fund Balance					
0830	Committed Fund Balance					2,389,141
0840	Assigned Fund Balance		7,227,280			7,227,280
0850	Unassigned Fund Balance					7,657,870
Total Fund Balances			\$7,227,280			\$18,770,646
Total Liabilities, Deferred Inflows Of Resources And Fund Balances			\$8,620,005			\$36,113,215

Amounts Expressed in Whole Dollars		<u>General Fund</u> <u>(10)</u>	<u>Public Purpose Trust</u> <u>(27)</u>	<u>Other Compt Approved</u> <u>(28)</u>	<u>Athletic / Activity</u> <u>(29)</u>	<u>Capital Reserve (690.</u> <u>1850)</u> <u>(31)</u>
Revenues						
6000	Revenue from Local Sources	83,464,990				
7000	Revenue from State Sources	22,577,921				
8000	Revenue from Federal Sources	690,370				
Total Revenues		\$106,733,281				
Expenditures						
1000	Instruction	59,399,032				
2000	Support Services	33,411,560				
3000	Operation of Non-Instructional Services	1,461,122				
4000	Facilities Acquisition, Construction and Improvement Services					
5110	Debt Service	9,637,979				
5130	Refund of Prior Year Revenues / Receipts	57,102				
Total Expenditures		\$103,966,795				
Excess (Deficiency) Of Revenues Over Expenditures		\$2,766,486				
Other Financing Sources (Uses)						
9110	Face Value of Bonds Issued					
9120	Proceeds from Refunding of Bonds					
9130	Bond Premiums					
9200	Proceeds from Extended-Term Financing					
9300	Interfund Transfers - IN					
9400	Sale of or Compensation for Loss of Fixed Assets					
9710	Transfers from Component Units					
9720	Transfers from Primary Governments					
9910	Other Financing Sources Not Listed in the 9000 Series					
9990	Insurance Recoveries	18,419				
5120	Debt Service – Refunded Bonds					
5150	Bond Discounts					
5200	Interfund Transfers – Out	200,000				
5300	Transfers Out to Component Units/Primary Governments					
Total Other Financing Sources (Uses)		(\$181,581)				

Amounts Expressed in Whole Dollars		<u>Capital Reserve (1431</u> <u>(32)</u>	<u>Other Capital Projects</u> <u>Fund</u> <u>(39)</u>	<u>Debt Service</u> <u>(40)</u>	<u>Permanent</u> <u>(90)</u>	<u>Total Governmental</u> <u>Funds</u>
Revenues						
6000	Revenue from Local Sources		254,582			83,719,572
7000	Revenue from State Sources					22,577,921
8000	Revenue from Federal Sources					690,370
Total Revenues			\$254,582			\$106,987,863
Expenditures						
1000	Instruction					59,399,032
2000	Support Services		469,590			33,881,150
3000	Operation of Non-Instructional Services					1,461,122
4000	Facilities Acquisition, Construction and Improvement Services		2,017,796			2,017,796
5110	Debt Service		4,283			9,642,262
5130	Refund of Prior Year Revenues / Receipts					57,102
Total Expenditures			\$2,491,669			\$106,458,464
Excess (Deficiency) Of Revenues Over Expenditures			(\$2,237,087)			\$529,399
Other Financing Sources (Uses)						
9110	Face Value of Bonds Issued		8,500,000			8,500,000
9120	Proceeds from Refunding of Bonds		17,390,000			17,390,000
9130	Bond Premiums		914,846			914,846
9200	Proceeds from Extended-Term Financing					
9300	Interfund Transfers - IN		200,000			200,000
9400	Sale of or Compensation for Loss of Fixed Assets					
9710	Transfers from Component Units					
9720	Transfers from Primary Governments					
9910	Other Financing Sources Not Listed in the 9000 Series					
9990	Insurance Recoveries					18,419
5120	Debt Service – Refunded Bonds		18,789,010			18,789,010
5150	Bond Discounts					
5200	Interfund Transfers – Out					200,000
5300	Transfers Out to Component Units/Primary Governments					
Total Other Financing Sources (Uses)			\$8,215,836			\$8,034,255

Amounts Expressed in Whole Dollars		<u>General Fund</u> <u>(10)</u>	<u>Public Purpose Trust</u> <u>(27)</u>	<u>Other Compt Approved</u> <u>(28)</u>	<u>Athletic / Activity</u> <u>(29)</u>	<u>Capital Reserve</u> <u>(690.</u> <u>1850)</u> <u>(31)</u>
Special And Extraordinary Items						
9920	Special Items – Gains					
9930	Extraordinary Items – Gains					
5520	Special Items – Losses					
5530	Extraordinary Items – Losses					
Net Change In Fund Balances		\$2,584,905				
Fund Balance						
0001	Fund Balance - Beginning of Fiscal Year	8,958,462				
Fund Balance - End Of Year		\$11,543,367				

Amounts Expressed in Whole Dollars		<u>Capital Reserve (1431)</u> <u>(32)</u>	<u>Other Capital Projects</u> <u>Fund</u> <u>(39)</u>	<u>Debt Service</u> <u>(40)</u>	<u>Permanent</u> <u>(90)</u>	<u>Total Governmental</u> <u>Funds</u>
Special And Extraordinary Items						
9920	Special Items – Gains					
9930	Extraordinary Items – Gains					
5520	Special Items – Losses					
5530	Extraordinary Items – Losses					
Net Change In Fund Balances			\$5,978,749			\$8,563,654
Fund Balance						
0001	Fund Balance - Beginning of Fiscal Year		1,248,529			10,206,991
Fund Balance - End Of Year			\$7,227,278			\$18,770,645

LEA : 123465303 Methacton SD

Printed 10/23/2018 2:38:27 PM

Amounts Expressed in Whole Dollars	Food Service (51)	Child Care Operations (52)	Other Enterprise (58)	TOTAL	Internal Service (60)
Assets And Deferred Outflows Of Resources					
Current Assets					
0100 Cash and Cash Equivalents	190,374			190,374	
0110 Investments					
0130 Due From Other Funds	3,792			3,792	
0141 Due From Other Governments					
0142 State Revenue Receivable	5,396			5,396	
0143 Federal Revenue Receivable	62,799			62,799	
0146 Due from Primary Government					
0147 Due from Component Unit					
0150 Other Receivables	722			722	
0170 Inventories	25,630			25,630	
0180 Prepaid Expenses (Expenditures)					
0190 Other Current Assets					
Total Current Assets	\$288,713			\$288,713	
Noncurrent Assets					
0211 Land					
0212 Site Improvements (Net)					
0220 Buildings and Building Improvements (Net)					
0230 Machinery, Equipment and Furniture (Net)	62,369			62,369	
0250 Construction in Progress					
0260 Long Term Prepayments					
0290 Other Noncurrent Assets					
Total Noncurrent Assets	\$62,369			\$62,369	
0910 Deferred Outflows of Resources					
Total Assets And Deferred Outflows Of Resources	\$351,082			\$351,082	

Amounts Expressed in Whole Dollars	<u>Food Service</u> <u>(51)</u>	<u>Child Care</u> <u>Operations</u> <u>(52)</u>	<u>Other Enterprise</u> <u>(58)</u>	<u>TOTAL</u>	<u>Internal Service</u> <u>(60)</u>
Liabilities And Deferred Inflows Of Resources And Net Position					
Current Liabilities					
0400 Due to Other Funds					
0411 Due to Other Governments					
0413 Due to Component Unit					
0420 Accounts Payable	90,640			90,640	
0430 Contracts Payable					
0440 Current Portion of Long-Term Debt					
0450 Short-Term Payables					
0461 Accrued Salaries and Benefits					
0462 Payroll Deductions and Withholding					
0480 Unearned Revenues	12,483			12,483	
0490 Other Current Liabilities	40,013			40,013	
Total Current Liabilities	\$143,136			\$143,136	
Noncurrent Liabilities					
0510 Bonds Payable					
0520 Extended-Term Financing Agreements Payable					
0530 Lease-Purchase Obligations					
0540 Accumulated Compensated Absences					
0550 Authority Lease Obligations					
0560 Other Post-Employment Benefits (OPEB)					
0570 Net Pension Liability					
0599 Other Noncurrent Liabilities					
Total Noncurrent Liabilities					
Total Liabilities	\$143,136			\$143,136	
0950 Deferred Inflows of Resources					
Net Position					
0791 Net Investment in Capital Assets	62,369			62,369	
0008 Restricted Net Position (0792 – 0798)					
0799 Unrestricted Net Position	145,577			145,577	
Total Net Position	\$207,946			\$207,946	
Total Liabilities And Deferred Inflows Of Resources And Net Position	\$351,082			\$351,082	

Amounts Expressed in Whole Dollars	<u>Food Service</u> <u>(51)</u>	<u>Child Care Operations</u> <u>(52)</u>	<u>Other Enterprise</u> <u>(58)</u>	<u>TOTAL</u>	<u>Internal Service</u> <u>(60)</u>
Operating Revenues					
6600 Food Service Revenue	990,954			990,954	
0071 Charges for Services					
0072 Other Operating Revenue					
Total Operating Revenues	\$990,954			\$990,954	
Operating Expenses					
100 Personnel Services – Salaries					
200 Personnel Services – Employee Benefits					
300 Purchased Professional and Technical Services					
400 Purchased Property Services					
500 Other Purchased Services	1,349,820			1,349,820	
600 Supplies	76,780			76,780	
740 Depreciation	7,690			7,690	
810 Dues and Fees					
890 Miscellaneous Expenditures					
Total Operating Expenses	\$1,434,290			\$1,434,290	
Operating Income (Loss)	(\$443,336)			(\$443,336)	
Non Operating Revenues (Expenses)					
6500 Earnings on Investments	4,061			4,061	
6920 Contributions and Donations from Private Sources					
6930 Gains or Losses on Sale of Fixed Assets					
6991 Refunds of a Prior Year Expenditure					
7000 Revenue from State Sources	32,656			32,656	
8000 Revenue from Federal Sources	456,817			456,817	
820 Claims and Judgments Against the LEA					
830 Interest					
TOTAL Non Operating Revenues (Expenses)	\$493,534			\$493,534	
Income (Loss) Before Contributions And Transfers	\$50,198			\$50,198	

Amounts Expressed in Whole Dollars	<u>Food Service</u> <u>(51)</u>	<u>Child Care Operations</u> <u>(52)</u>	<u>Other Enterprise</u> <u>(58)</u>	<u>TOTAL</u>	<u>Internal Service</u> <u>(60)</u>
Contributions, Transfers, and Special and Extraordinary Items					
5200 Interfund Transfers – Out					
5300 Transfers Out to Component Units/Primary Governments					
5520 Special Items – Losses					
5530 Extraordinary Items – Losses					
9300 Interfund Transfers - IN					
9500 Capital Contributions					
9700 Transfers IN From Component Units/Primary Governments					
9920 Special Items – Gains					
9930 Extraordinary Items – Gains					
Change In Net Position	\$50,198			\$50,198	
0002 Net Position - Beginning of Fiscal Year	157,748			157,748	
0003 Accounting Changes / Residual Equity Transfers					
Net Position - End Of Year	\$207,946			\$207,946	

LEA : 123465303 Methacton SD

Printed 10/23/2018 2:38:31 PM

Amounts Expressed in Whole Dollars	<u>Food Service</u> <u>(51)</u>	<u>Child Care Operations</u> <u>(52)</u>	<u>Other Enterprise</u> <u>(58)</u>	<u>TOTAL</u>	<u>Internal Service(60)</u>
Cash Flows From Operating Activities					
0011 Cash Receipts From Users	990,766			990,766	
0012 Cash Receipts From Assessments Made to Other Funds					
0013 Cash Receipts From Earnings on Investments					
0014 Cash Receipts From Other Operating Revenue					
0015 Cash Payments To Employees For Services					
0016 Cash Payments For Insurance Claims					
0017 Cash Payments To Suppliers For Goods and Services	1,542,456			1,542,456	
0018 Cash Payments For Other Operating Expenses					
Net Cash Provided By (Used For) Operating Activities	(\$551,690)			(\$551,690)	
Cash Flows From Non-Capital Financing Activities					
0021 Receipts From Local Sources - 6000					
0022 Receipts From State Sources - 7000	32,300			32,300	
0023 Receipts From Federal Sources -8000	451,510			451,510	
0024 Notes and Loans Received (Repaid)					
0025 Interest Paid on Notes/Loans - 5100-830					
0026 Operating Transfers In (Out)/Residual Equity Trans					
0027 Operating Transfers In (Out) Primary Government / Comp Unit					
0028 Receipts From Refund of Prior Year Expenditures - 6991					
0029 Special and Extraordinary Gains (losses)					
0030 Receipts from Insurance Recoveries -9990					
Net Cash Prov By (Used for) Non-Capital Financing Activities	\$483,810			\$483,810	
Cash Flows From Capital and Related Financing Activities					
0031 Payments For Fac Acq, Const, and Imp - 4000	(9,040)			(9,040)	
0032 Gain / (Loss) on Sale of Fixed Assets - 6930					
0033 Proceeds From Extended Term Financing - 9200					
0034 Principal Paid on Financing Agreements					
0035 Interest Paid on Financing Agreements - 5100-830					
0036 (Inc) Dec in Contributed Capital					
Net Cash Prov By (Used for) Capital and Related Financing Activities	(\$9,040)			(\$9,040)	
Cash Flows From Investing Activities					
0041 Earnings on Investments - 6500	4,061			4,061	
0042 Purchase of Inv Securities / Deposits to Inv Pools					
0043 Receipts From Investment Pool Withdrawals					
0044 Proceeds from Sale and Maturity of Inv Securities					

LEA : 123465303 Methacton SD

Printed 10/23/2018 2:38:31 PM

0045 Loans Received (Paid)

Net Cash Prov By (Used for) Investing Activities	\$4,061	\$4,061
--	---------	---------

LEA : 123465303 Methacton SD

Printed 10/23/2018 2:38:31 PM

	Food Service	Child Care Operations	Other Enterprise	TOTAL	Internal Service
	(51)	(52)	(58)		(60)
Net Increase (Decrease) in Cash Flows	(72,859)			(72,859)	
0004 Cash and Cash Equivalents Beginning of Year					
Cash and Cash Equivalents at Year End	(\$72,859)			(\$72,859)	
Reconciliation of Operating Income (Loss) To Net Cash Provided by (Used For) Operating Activities					
0005 Operating Income (Loss) per REP	(443,336)			(443,336)	
Adjustments					
0051 Depreciation and Net Amortization	7,690			7,690	
0052 Provision for Uncollectible Accounts					
0053 Other Adjustments					
Effect of Changes in Assets, Liabilities, Deferred Outflows and Deferred Inflows					
0054 (Inc) Dec In Accounts Receivable (0120-0150)	(188)			(188)	
0055 Advances to Other Funds (0160)					
0056 (Inc) Dec in Inventories (0170)	(1,649)			(1,649)	
0057 (Inc) Dec in Prepaid Expenses (0180)					
0058 (Inc) Dec in Other Current or Noncurrent Assets	(1,179)			(1,179)	
0064 Deferred Outflows (0910)					
0059 Inc (Dec) in Accounts Payable (0400-0450)	9,451			9,451	
0060 Inc (Dec) in Accrued Salaries/Benefits (0461)					
0065 Inc (Dec) in Net Pension Liabilities (0570)					
0066 Inc (Dec) in Other Postemp Benefit Oblig (0560)					
0061 Inc (Dec) in Payroll Deductions/Withholding (0462)					
0062 Inc (Dec) in Unearned Revenue (0480)					
0063 Inc (Dec) in Other Current or Noncurrent Liabilities	(122,479)			(122,479)	
0067 Deferred Inflows (0950)					
Total Adjustments	(\$108,354)			(\$108,354)	
Cash Provided By (Used for) Total	(\$551,690)			(\$551,690)	

COMBINED STATEMENT OF CASH FLOWS
SCHEDULE OF NONCASH INVESTING, CAPITAL, AND FINANCING ACTIVITIES

Explanation of Transaction and Balance Sheet Effect	Amount
Donated Commodities Received	76,143
Donated Commodities Used	72,311
Total	\$148,454

LEA : 123465303 Methacton SD

Printed 10/23/2018 2:38:32 PM

Amounts Expressed in Whole Dollars	<u>Private Purpose Trust</u> <u>(71)</u>	<u>Investment Trust</u> <u>(72)</u>	<u>Pension Trust</u> <u>(73)</u>	<u>Activity</u> <u>(81)</u>
Assets And Deferred Outflows Of Resources				
Assets				
0100 Cash and Cash Equivalents	96,857			426,901
0110 Investments				
0130 Due From Other Funds				
0147 Due from Component Unit				
0150 Other Receivables				60
0170 Inventories				
0180 Prepaid Expenses (Expenditures)				7,527
0190 Other Current Assets				
0220 Buildings and Building Improvements (Net)				
0230 Machinery, Equipment and Furniture (Net)				
Total Assets	\$96,857			\$434,488
0910 Deferred Outflows of Resources				
Total Assets And Deferred Outflows Of Resources	\$96,857			\$434,488

LEA : 123465303 Methacton SD

Printed 10/23/2018 2:38:32 PM

Amounts Expressed in Whole Dollars		<u>Other Agency</u> <u>(89)</u>	<u>Discrete Component Units</u> <u>(98)</u>	<u>Discrete Component Units</u> <u>(99)</u>	<u>Total Fiduciary Funds</u>
Assets And Deferred Outflows Of Resources					
Assets					
0100	Cash and Cash Equivalents				523,758
0110	Investments				
0130	Due From Other Funds				
0147	Due from Component Unit				
0150	Other Receivables				60
0170	Inventories				
0180	Prepaid Expenses (Expenditures)				7,527
0190	Other Current Assets				
0220	Buildings and Building Improvements (Net)				
0230	Machinery, Equipment and Furniture (Net)				
Total Assets					\$531,345
0910	Deferred Outflows of Resources				
Total Assets And Deferred Outflows Of Resources					\$531,345

LEA : 123465303 Methacton SD

Printed 10/23/2018 2:38:32 PM

Amounts Expressed in Whole Dollars	<u>Private Purpose Trust</u> <u>(71)</u>	<u>Investment Trust</u> <u>(72)</u>	<u>Pension Trust</u> <u>(73)</u>	<u>Activity</u> <u>(81)</u>
Liabilities, Deferred Inflows Of Resources And Net Position				
Liabilities				
0400 Due to Other Funds				
0411 Due to Other Governments				86
0412 Due to Primary Government				
0413 Due to Component Unit				
0420 Accounts Payable				70,947
0430 Contracts Payable				
0450 Short-Term Payables				
0461 Accrued Salaries and Benefits				
0462 Payroll Deductions and Withholding				
0480 Unearned Revenues				
0490 Other Current Liabilities				363,455
Total Liabilities				\$434,488
0950 Deferred Inflows of Resources				
Net Position				
0791 Net Investment in Capital Assets				
0009 Restricted Net Position (0792 – 0798)	96,857			
0799 Unrestricted Net Position				
Total Net Position	\$96,857			
Total Liabilities, Deferred Inflows Of Resources And Net Position	\$96,857			\$434,488

LEA : 123465303 Methacton SD

Printed 10/23/2018 2:38:32 PM

Amounts Expressed in Whole Dollars

<u>Other Agency</u> <u>(89)</u>	<u>Discrete Component Units</u> <u>(98)</u>	<u>Discrete Component Units</u> <u>(99)</u>	<u>Total Fiduciary Funds</u>
------------------------------------	--	--	------------------------------

Liabilities, Deferred Inflows Of Resources And Net Position

Liabilities

0400	Due to Other Funds			
0411	Due to Other Governments			86
0412	Due to Primary Government			
0413	Due to Component Unit			
0420	Accounts Payable			70,947
0430	Contracts Payable			
0450	Short-Term Payables			
0461	Accrued Salaries and Benefits			
0462	Payroll Deductions and Withholding			
0480	Unearned Revenues			
0490	Other Current Liabilities			363,455
Total Liabilities				\$434,488

0950 Deferred Inflows of Resources

Net Position

0791	Net Investment in Capital Assets			
0009	Restricted Net Position (0792 – 0798)			96,857
0799	Unrestricted Net Position			

Total Net Position				\$96,857
--------------------	--	--	--	----------

Total Liabilities, Deferred Inflows Of Resources And Net Position				\$531,345
---	--	--	--	-----------

LEA : 123465303 Methacton SD

Printed 10/23/2018 2:38:33 PM

Amounts Expressed in Whole Dollars	<u>Private Purpose Trust</u> <u>(71)</u>	<u>Investment Trust</u> <u>(72)</u>	<u>Pension Trust</u> <u>(73)</u>	<u>Discrete Component</u> <u>Units</u> <u>(98)</u>	<u>Discrete Component</u> <u>Units</u> <u>(99)</u>	<u>Total Fiduciary</u> <u>Funds</u>
Additions						
0091 Gifts and Contributions	9,390					9,390
0092 Other Additions	586					586
Deductions						
0093 Scholarships Awarded	7,900					7,900
0094 Other Deductions						
Change In Net Position	\$2,076					\$2,076
0006 Net Position – Beginning of Fiscal Year	94,781					94,781
0007 Net Position Held in Trust for Pension Benefits						
Net Position - End of Fiscal Year	\$96,857					\$96,857

LEA : 123465303 Methacton SD

General Fund (10)

Printed 10/23/2018 2:38:34 PM

Page - 1 of 4

	Revenue Reported In Current Year	Current Year Tax Accrual	Prior Year Tax Accrual	Taxes Collected In Current Year
Revenue from Local Sources				
6111 Current Real Estate Taxes	71,389,124.78			71,389,124.78
6112 Interim Real Estate Taxes	420,115.73	3,387.11	8,067.48	424,796.10
6113 Public Utility Realty Taxes	78,381.86			78,381.86
6114 Payments in Lieu of Current Taxes - State / Local	58,460.80			58,460.80
6120 Current Per Capita Taxes, Section 679	93,690.63	43,603.31	37,310.64	87,397.96
6141 Current Act 511 Per Capita Taxes	93,690.64	43,603.30	37,310.63	87,397.97
6142 Current Act 511 Occupation Taxes - Flat Rate	109,268.28	3,626.39	2,978.55	108,620.44
6151 Current Act 511 Earned Income Taxes	7,064,440.90	185,805.62	145,978.50	7,024,613.78
6153 Current Act 511 Real Estate Transfer Taxes	904,402.07	220,573.17	206,006.23	889,835.13
6154 Current Act 511 Amusement Taxes	46,537.94	13,196.79	6,079.13	39,420.28
6411 Delinquent Real Estate Taxes	1,117,480.30	122,183.93	50,047.79	1,045,344.16
6420 Delinquent Per Capita Taxes, Section 679	23,274.88	3,002.12	5,398.36	25,671.12
6440 Delinquent Local Enabling Taxes - Flat Rate Assessments	23,274.85	3,002.11	5,398.35	25,671.09
6500 Earnings on Investments	422,091.49			
6700 Revenues from LEA Activities	214,474.45			
6831 Federal Revenue Received from Other Pennsylvania Public LEAs	11,071.87			
6832 Federal IDEA Revenue Received as Pass Through	853,511.92			
6910 Rentals	106,209.75			
6920 Contributions and Donations from Private Sources	446.09			
6942 Summer School Tuition	42,199.84			
6943 Adult Education Tuition	220,884.60			
6944 Receipts from Other LEAs in Pennsylvania - Education	950.00			
6991 Refunds of a Prior Year Expenditure	107,722.64			
6992 Energy Efficiency Revenues and Incentives	38,679.52			
6999 Other Revenues Not Specified Above	24,603.85			
TOTAL Revenue from Local Sources	\$83,464,989.68	\$641,983.85	\$504,575.66	\$81,284,735.47

	Revenue Reported In Current Year			
<u>Revenue from State Sources</u>				
7110 Basic Education Funding	6,770,246.49			
7160 Tuition for Orphans Subsidy	75,121.20			
7271 Special Education funds for School-Aged Pupils	2,600,039.97			
7311 Pupil Transportation Subsidy	1,569,176.94			
7312 Nonpublic and Charter School Pupil Transportation Subsidy	343,420.00			
7320 Rental and Sinking Fund Payments / Building Reimbursement Subsidy	485,382.17			
7330 Health Services (Medical, Dental, Nurse, Act 25)	87,764.36			
7340 State Property Tax Reduction Allocation	2,008,489.88			
7505 Ready to Learn Block Grant	252,829.00			
7810 State Share of Social Security and Medicare Taxes	1,499,629.46			
7820 State Share of Retirement Contributions	6,885,821.88			
TOTAL Revenue from State Sources	\$22,577,921.35			

	Revenue Reported <u>In Current Year</u>			
<u>Revenue from Federal Sources</u>				
8514 NCLB, Title I - Improving the Academic Achievement of the Disadvantaged	334,562.89			
8515 NCLB, Title II - Preparing, Training and Recruiting High Quality Teachers and Principals	106,562.51			
8517 NCLB, Title IV - 21St Century Schools	10,000.00			
8810 School-Based Access Medicaid Reimbursement Program (SBAP) Reimbursements (Access)	235,000.00			
8820 Medical Assistance Reimbursement for Administrative Claiming (Quarterly) Program	4,244.47			
TOTAL Revenue from Federal Sources	\$690,369.87			

	Revenue Reported In Current Year			
<u>Other Financing Sources</u>				
9990 Insurance Recoveries	18,419.13			
TOTAL Other Financing Sources	\$18,419.13			
TOTAL FROM ALL SOURCES	\$106,751,700.03	\$641,983.85	\$504,575.66	\$81,284,735.47

Revenue from Local Sources	83,464,989.68
Revenue from State Sources	22,577,921.35
Revenue from Federal Sources	690,369.87
Other Financing Sources	18,419.13
TOTAL FROM ALL SOURCES	\$106,751,700.03

LEA : 123465303 Methacton SD

Printed 10/23/2018 2:38:37 PM

General Fund (10)

1000 Instruction	Total
100 <u>Personnel Services – Salaries</u>	
100 Personnel Services – Salaries	29,337,353.54
Total Personnel Services – Salaries	\$29,337,353.54
200 <u>Personnel Services – Employee Benefits</u>	
210 Group Insurance – Contracted Provider	54,211.64
220 Social Security Contributions	2,136,012.51
230 PSERS Retirement Contributions	9,589,807.76
250 Unemployment Compensation	28,686.88
260 Workers' Compensation	247,909.98
270 Group Insurance – Self-Insurance	6,517,088.31
291 Other Retirement Plans	490,000.00
Total Personnel Services – Employee Benefits	\$19,063,717.08
300 <u>Purchased Professional and Technical Services</u>	
322 Professional Educational Services – Ius	1,087,654.46
329 Professional Educational Services – Other	2,121,884.40
330 Other Professional Services	1,729,656.78
340 Technical Services	25,806.47
390 Other Purchased Professional and Technical Services	279.13
Total Purchased Professional and Technical Services	\$4,965,281.24
400 <u>Purchased Property Services</u>	
430 Repairs and Maintenance Services	28,206.75
440 Rentals	695,371.98
Total Purchased Property Services	\$723,578.73
500 <u>Other Purchased Services</u>	
510 Student Transportation Services	945.64
530 Communications	2,192.60
550 Printing and Binding	26,325.80
561 Tuition To Other School Districts Within the State	173,816.04
562 Tuition To Pennsylvania Charter Schools	1,189,136.50
564 Tuition To Career and Technology Centers	1,322,587.77
566 Tuition To Institutions of Higher Education and Technical Institutes	18,000.00
567 Tuition To Approved Private Schools (APS) and PA Chartered Schools for the Deaf and Blind	481,224.51
568 Tuition To Private Residential Rehabilitative Institutions (PRRI) [In-State] and Detention Centers	425,312.19
580 Travel	6,218.48
Total Other Purchased Services	\$3,645,759.53
600 <u>Supplies</u>	
610 General Supplies	409,372.81
620 Energy	1,344.36
630 Food	524.36
640 Books and Periodicals	247,331.70
650 Supplies & Fees – Technology Related	275,857.67
Total Supplies	\$934,430.90

LEA : 123465303 Methacton SD

Printed 10/23/2018 2:38:37 PM

General Fund (10)		
1000 Instruction		<u>Total</u>
700 <u>Property</u>		
752 Capital Equipment – Original and Additional	24,299.47	
762 Capitalized Equipment - Replacement	1,035.96	
Total Property	\$25,335.43	
800 <u>Other Objects</u>		
810 Dues and Fees	2,817.95	
820 Claims and Judgments Against the LEA	700,758.05	
Total Other Objects	\$703,576.00	
Total 1000 Instruction	\$59,399,032.45	

LEA : 123465303 Methacton SD

Printed 10/23/2018 2:38:37 PM

General Fund (10)

1100 Regular Programs – Elementary / Secondary

	Elementary	Secondary	Federal	Total
100 <u>Personnel Services – Salaries</u>				
100 Personnel Services – Salaries	11,774,004.98	10,205,133.15	230,830.49	22,209,968.62
Total Personnel Services – Salaries	\$11,774,004.98	\$10,205,133.15	\$230,830.49	\$22,209,968.62
200 <u>Personnel Services – Employee Benefits</u>				
210 Group Insurance – Contracted Provider	20,221.07	20,370.85	90.49	40,682.41
220 Social Security Contributions	858,136.25	745,017.91	17,149.05	1,620,303.21
230 PSERS Retirement Contributions	3,842,129.32	3,334,146.07	73,378.05	7,249,653.44
250 Unemployment Compensation	14,630.31	14,056.57		28,686.88
260 Workers' Compensation	93,154.30	93,154.30		186,308.60
270 Group Insurance – Self-Insurance	2,423,923.39	2,448,057.91	27,115.57	4,899,096.87
291 Other Retirement Plans	249,900.00	240,100.00		490,000.00
Total Personnel Services – Employee Benefits	\$7,502,094.64	\$6,894,903.61	\$117,733.16	\$14,514,731.41
300 <u>Purchased Professional and Technical Services</u>				
322 Professional Educational Services – Ius	147,622.28	210,860.62		358,482.90
329 Professional Educational Services – Other	892,536.15	695,080.34	5,478.00	1,593,094.49
330 Other Professional Services		2,193.78		2,193.78
Total Purchased Professional and Technical Services	\$1,040,158.43	\$908,134.74	\$5,478.00	\$1,953,771.17
400 <u>Purchased Property Services</u>				
430 Repairs and Maintenance Services	5,689.02	20,347.21		26,036.23
440 Rentals	690,263.00			690,263.00
Total Purchased Property Services	\$695,952.02	\$20,347.21		\$716,299.23
500 <u>Other Purchased Services</u>				
510 Student Transportation Services		625.19		625.19
530 Communications	318.75	306.25		625.00
550 Printing and Binding	15,587.41			15,587.41
561 Tuition To Other School Districts Within the State		16,254.20		16,254.20
562 Tuition To Pennsylvania Charter Schools	390,792.34	375,467.15		766,259.49
568 Tuition To Private Residential Rehabilitative Institutions (PRRI) [In-State] and Detention Centers		10,720.32		10,720.32
580 Travel	218.24	5,713.72		5,931.96
Total Other Purchased Services	\$406,916.74	\$409,086.83		\$816,003.57
600 <u>Supplies</u>				
610 General Supplies	137,973.72	229,023.06	620.65	367,617.43
630 Food	244.74	279.62		524.36
640 Books and Periodicals	168,286.16	69,764.41	763.87	238,814.44
650 Supplies & Fees – Technology Related	134,684.00	133,976.76		268,660.76
Total Supplies	\$441,188.62	\$433,043.85	\$1,384.52	\$875,616.99
700 <u>Property</u>				
752 Capital Equipment – Original and Additional		7,102.32		7,102.32
762 Capitalized Equipment - Replacement		1,035.96		1,035.96
Total Property		\$8,138.28		\$8,138.28
800 <u>Other Objects</u>				

LEA : 123465303 Methacton SD

Printed 10/23/2018 2:38:37 PM

General Fund (10)

1100 Regular Programs – Elementary / Secondary

Elementary

Secondary

Federal

Total

800 Other Objects

810 Dues and Fees

10.17

2,365.78

2,375.95

Total Other Objects

\$10.17

\$2,365.78

\$2,375.95

Total 1100 Regular Programs – Elementary / Secondary

\$21,860,325.60

\$18,881,153.45

\$355,426.17

\$41,096,905.22

LEA : 123465303 Methacton SD

Printed 10/23/2018 2:38:37 PM

General Fund (10)

1110 Regular Programs

	Elementary	Secondary	Federal	Total
100 <u>Personnel Services – Salaries</u>				
100 Personnel Services – Salaries	11,774,004.98	10,205,133.15	26,409.43	22,005,547.56
Total Personnel Services – Salaries	\$11,774,004.98	\$10,205,133.15	\$26,409.43	\$22,005,547.56
200 <u>Personnel Services – Employee Benefits</u>				
210 Group Insurance – Contracted Provider	20,221.07	20,370.85		40,591.92
220 Social Security Contributions	858,136.25	745,017.91	1,838.90	1,604,993.06
230 PSERS Retirement Contributions	3,842,129.32	3,334,146.07	8,601.54	7,184,876.93
250 Unemployment Compensation	14,630.31	14,056.57		28,686.88
260 Workers' Compensation	93,154.30	93,154.30		186,308.60
270 Group Insurance – Self-Insurance	2,423,923.39	2,448,057.91		4,871,981.30
291 Other Retirement Plans	249,900.00	240,100.00		490,000.00
Total Personnel Services – Employee Benefits	\$7,502,094.64	\$6,894,903.61	\$10,440.44	\$14,407,438.69
300 <u>Purchased Professional and Technical Services</u>				
322 Professional Educational Services – lus	147,622.28	210,860.62		358,482.90
329 Professional Educational Services – Other	892,536.15	695,080.34		1,587,616.49
330 Other Professional Services		2,193.78		2,193.78
Total Purchased Professional and Technical Services	\$1,040,158.43	\$908,134.74		\$1,948,293.17
400 <u>Purchased Property Services</u>				
430 Repairs and Maintenance Services	5,689.02	20,347.21		26,036.23
440 Rentals	690,263.00			690,263.00
Total Purchased Property Services	\$695,952.02	\$20,347.21		\$716,299.23
500 <u>Other Purchased Services</u>				
510 Student Transportation Services		625.19		625.19
530 Communications	318.75	306.25		625.00
550 Printing and Binding	15,587.41			15,587.41
561 Tuition To Other School Districts Within the State		16,254.20		16,254.20
562 Tuition To Pennsylvania Charter Schools	390,792.34	375,467.15		766,259.49
568 Tuition To Private Residential Rehabilitative Institutions (PRRI) [In-State] and Detention Centers		10,720.32		10,720.32
580 Travel	218.24	5,713.72		5,931.96
Total Other Purchased Services	\$406,916.74	\$409,086.83		\$816,003.57
600 <u>Supplies</u>				
610 General Supplies	137,973.72	229,023.06	62.33	367,059.11
630 Food	244.74	279.62		524.36
640 Books and Periodicals	168,286.16	69,764.41		238,050.57
650 Supplies & Fees – Technology Related	134,684.00	133,976.76		268,660.76
Total Supplies	\$441,188.62	\$433,043.85	\$62.33	\$874,294.80
700 <u>Property</u>				
752 Capital Equipment – Original and Additional		7,102.32		7,102.32
762 Capitalized Equipment - Replacement		1,035.96		1,035.96
Total Property		\$8,138.28		\$8,138.28
800 <u>Other Objects</u>				

LEA : 123465303 Methacton SD

Printed 10/23/2018 2:38:37 PM

General Fund (10)				
1110 Regular Programs	<u>Elementary</u>	<u>Secondary</u>	<u>Federal</u>	<u>Total</u>
800 <u>Other Objects</u>				
810 Dues and Fees	10.17	2,365.78		2,375.95
Total Other Objects	\$10.17	\$2,365.78		\$2,375.95
Total 1110 Regular Programs	\$21,860,325.60	\$18,881,153.45	\$36,912.20	\$40,778,391.25

LEA : 123465303 Methacton SD

Printed 10/23/2018 2:38:37 PM

General Fund (10)

1190 Federally-Funded Regular Programs	<u>Elementary</u>	<u>Secondary</u>	<u>Federal</u>	<u>Total</u>
100 <u>Personnel Services – Salaries</u>				
100 Personnel Services – Salaries			204,421.06	204,421.06
Total Personnel Services – Salaries			\$204,421.06	\$204,421.06
200 <u>Personnel Services – Employee Benefits</u>				
210 Group Insurance – Contracted Provider			90.49	90.49
220 Social Security Contributions			15,310.15	15,310.15
230 PSERS Retirement Contributions			64,776.51	64,776.51
270 Group Insurance – Self-Insurance			27,115.57	27,115.57
Total Personnel Services – Employee Benefits			\$107,292.72	\$107,292.72
300 <u>Purchased Professional and Technical Services</u>				
329 Professional Educational Services – Other			5,478.00	5,478.00
Total Purchased Professional and Technical Services			\$5,478.00	\$5,478.00
600 <u>Supplies</u>				
610 General Supplies			558.32	558.32
640 Books and Periodicals			763.87	763.87
Total Supplies			\$1,322.19	\$1,322.19
Total 1190 Federally-Funded Regular Programs			\$318,513.97	\$318,513.97

LEA : 123465303 Methacton SD

Printed 10/23/2018 2:38:37 PM

General Fund (10)

1200 Special Programs – Elementary / Secondary	Elementary	Secondary	Federal	Total
100 Personnel Services – Salaries				
100 Personnel Services – Salaries	3,053,647.56	2,317,712.07	853,511.92	6,224,871.55
Total Personnel Services – Salaries	\$3,053,647.56	\$2,317,712.07	\$853,511.92	\$6,224,871.55
200 Personnel Services – Employee Benefits				
210 Group Insurance – Contracted Provider	5,996.04	5,996.04		11,992.08
220 Social Security Contributions	247,312.91	202,034.26		449,347.17
230 PSERS Retirement Contributions	1,140,923.60	907,761.02		2,048,684.62
260 Workers' Compensation	27,301.22	27,301.22		54,602.44
270 Group Insurance – Self-Insurance	717,080.38	717,080.38		1,434,160.76
Total Personnel Services – Employee Benefits	\$2,138,614.15	\$1,860,172.92		\$3,998,787.07
300 Purchased Professional and Technical Services				
322 Professional Educational Services – lus	285,065.45	422,322.11		707,387.56
329 Professional Educational Services – Other	199,871.78	328,918.13		528,789.91
330 Other Professional Services	940,607.70	649,492.99	20,001.40	1,610,102.09
340 Technical Services	13,161.30	12,645.17		25,806.47
Total Purchased Professional and Technical Services	\$1,438,706.23	\$1,413,378.40	\$20,001.40	\$2,872,086.03
500 Other Purchased Services				
510 Student Transportation Services	320.45			320.45
561 Tuition To Other School Districts Within the State	3,399.00	146,378.12		149,777.12
562 Tuition To Pennsylvania Charter Schools	215,667.28	207,209.73		422,877.01
566 Tuition To Institutions of Higher Education and Technical Institutes	1,530.00	16,470.00		18,000.00
567 Tuition To Approved Private Schools (APS) and PA Chartered Schools for the Deaf and Blind	191,463.76	289,760.75		481,224.51
568 Tuition To Private Residential Rehabilitative Institutions (PRRI) [In-State] and Detention Centers		403,507.87		403,507.87
580 Travel	231.42	55.10		286.52
Total Other Purchased Services	\$412,611.91	\$1,063,381.57		\$1,475,993.48
600 Supplies				
610 General Supplies	17,350.89	6,957.85		24,308.74
640 Books and Periodicals	4,406.26	3,991.83		8,398.09
650 Supplies & Fees – Technology Related	1,307.18	1,310.00	1,910.00	4,527.18
Total Supplies	\$23,064.33	\$12,259.68	\$1,910.00	\$37,234.01
800 Other Objects				
820 Claims and Judgments Against the LEA	101,104.64	599,653.41		700,758.05
Total Other Objects	\$101,104.64	\$599,653.41		\$700,758.05
Total 1200 Special Programs – Elementary / Secondary	\$7,167,748.82	\$7,266,558.05	\$875,423.32	\$15,309,730.19

LEA : 123465303 Methacton SD

Printed 10/23/2018 2:38:37 PM

General Fund (10)

1210 Life Skills Support

	Elementary	Secondary	Federal	Total
100 <u>Personnel Services – Salaries</u>				
100 Personnel Services – Salaries	50,394.57	244,805.56		295,200.13
Total Personnel Services – Salaries	\$50,394.57	\$244,805.56		\$295,200.13
200 <u>Personnel Services – Employee Benefits</u>				
220 Social Security Contributions	3,766.46	17,510.50		21,276.96
230 PSERS Retirement Contributions	16,413.50	79,677.73		96,091.23
Total Personnel Services – Employee Benefits	\$20,179.96	\$97,188.23		\$117,368.19
300 <u>Purchased Professional and Technical Services</u>				
322 Professional Educational Services – Ius	6,310.56	99,121.68		105,432.24
329 Professional Educational Services – Other	17,080.00	115,157.60		132,237.60
330 Other Professional Services	7,432.50			7,432.50
Total Purchased Professional and Technical Services	\$30,823.06	\$214,279.28		\$245,102.34
500 <u>Other Purchased Services</u>				
561 Tuition To Other School Districts Within the State		11,600.00		11,600.00
567 Tuition To Approved Private Schools (APS) and PA Chartered Schools for the Deaf and Blind	14,527.74	13,958.03		28,485.77
Total Other Purchased Services	\$14,527.74	\$25,558.03		\$40,085.77
600 <u>Supplies</u>				
610 General Supplies		458.90		458.90
640 Books and Periodicals	1,104.44	703.70		1,808.14
650 Supplies & Fees – Technology Related	169.00			169.00
Total Supplies	\$1,273.44	\$1,162.60		\$2,436.04
Total 1210 Life Skills Support	\$117,198.77	\$582,993.70		\$700,192.47

LEA : 123465303 Methacton SD

Printed 10/23/2018 2:38:37 PM

General Fund (10)				
1220 Sensory Support	<u>Elementary</u>	<u>Secondary</u>	<u>Federal</u>	<u>Total</u>
100 <u>Personnel Services – Salaries</u>				
100 Personnel Services – Salaries	270,536.96	130,761.87		401,298.83
Total Personnel Services – Salaries	\$270,536.96	\$130,761.87		\$401,298.83
200 <u>Personnel Services – Employee Benefits</u>				
220 Social Security Contributions	20,202.34	9,687.20		29,889.54
230 PSERS Retirement Contributions	87,671.26	42,589.13		130,260.39
Total Personnel Services – Employee Benefits	\$107,873.60	\$52,276.33		\$160,149.93
300 <u>Purchased Professional and Technical Services</u>				
322 Professional Educational Services – Ius	118,840.99	167,521.35		286,362.34
330 Other Professional Services	107,209.20	18,116.32		125,325.52
Total Purchased Professional and Technical Services	\$226,050.19	\$185,637.67		\$411,687.86
500 <u>Other Purchased Services</u>				
568 Tuition To Private Residential Rehabilitative Institutions (PRRI) [In-State] and Detention Centers		9,282.56		9,282.56
Total Other Purchased Services		\$9,282.56		\$9,282.56
600 <u>Supplies</u>				
610 General Supplies	398.00	1,330.66		1,728.66
Total Supplies	\$398.00	\$1,330.66		\$1,728.66
Total 1220 Sensory Support	\$604,858.75	\$379,289.09		\$984,147.84

LEA : 123465303 Methacton SD

Printed 10/23/2018 2:38:37 PM

General Fund (10)

1230 Emotional Support	Elementary	Secondary	Federal	Total
100 Personnel Services – Salaries				
100 Personnel Services – Salaries	706,475.25	542,924.77	239,276.34	1,488,676.36
Total Personnel Services – Salaries	\$706,475.25	\$542,924.77	\$239,276.34	\$1,488,676.36
200 Personnel Services – Employee Benefits				
220 Social Security Contributions	63,150.68	44,540.45		107,691.13
230 PSERS Retirement Contributions	283,610.31	199,510.78		483,121.09
Total Personnel Services – Employee Benefits	\$346,760.99	\$244,051.23		\$590,812.22
300 Purchased Professional and Technical Services				
322 Professional Educational Services – Ius	(123.88)	45,975.09		45,851.21
329 Professional Educational Services – Other	14,781.81	132,386.51		147,168.32
330 Other Professional Services	823,813.50	422,182.92		1,245,996.42
Total Purchased Professional and Technical Services	\$838,471.43	\$600,544.52		\$1,439,015.95
500 Other Purchased Services				
510 Student Transportation Services	320.45			320.45
561 Tuition To Other School Districts Within the State	8,244.00	100,492.12		108,736.12
566 Tuition To Institutions of Higher Education and Technical Institutes	1,530.00	4,470.00		6,000.00
568 Tuition To Private Residential Rehabilitative Institutions (PRRI) [In-State] and Detention Centers		333,075.55		333,075.55
580 Travel		55.10		55.10
Total Other Purchased Services	\$10,094.45	\$438,092.77		\$448,187.22
600 Supplies				
610 General Supplies	2,523.94	4,661.37		7,185.31
640 Books and Periodicals	700.41	2,029.19		2,729.60
650 Supplies & Fees – Technology Related		330.00		330.00
Total Supplies	\$3,224.35	\$7,020.56		\$10,244.91
800 Other Objects				
820 Claims and Judgments Against the LEA	65,404.50	101,956.66		167,361.16
Total Other Objects	\$65,404.50	\$101,956.66		\$167,361.16
Total 1230 Emotional Support	\$1,970,430.97	\$1,934,590.51	\$239,276.34	\$4,144,297.82

LEA : 123465303 Methacton SD

Printed 10/23/2018 2:38:37 PM

General Fund (10)

1240 Academic Support

	Elementary	Secondary	Federal	Total
100 <u>Personnel Services – Salaries</u>				
100 Personnel Services – Salaries	1,534,438.99	999,889.36	502,394.47	3,036,722.82
Total Personnel Services – Salaries	\$1,534,438.99	\$999,889.36	\$502,394.47	\$3,036,722.82
200 <u>Personnel Services – Employee Benefits</u>				
210 Group Insurance – Contracted Provider	5,996.04	5,996.04		11,992.08
220 Social Security Contributions	124,906.35	93,093.09		217,999.44
230 PSERS Retirement Contributions	596,195.07	421,987.09		1,018,182.16
260 Workers' Compensation	27,301.22	27,301.22		54,602.44
270 Group Insurance – Self-Insurance	717,080.38	717,080.38		1,434,160.76
Total Personnel Services – Employee Benefits	\$1,471,479.06	\$1,265,457.82		\$2,736,936.88
300 <u>Purchased Professional and Technical Services</u>				
322 Professional Educational Services – lus	665.39	109,703.99		110,369.38
329 Professional Educational Services – Other	140,337.24	59,903.90		200,241.14
330 Other Professional Services	2,152.50	209,193.75		211,346.25
Total Purchased Professional and Technical Services	\$143,155.13	\$378,801.64		\$521,956.77
500 <u>Other Purchased Services</u>				
561 Tuition To Other School Districts Within the State		34,286.00		34,286.00
562 Tuition To Pennsylvania Charter Schools	215,667.28	207,209.73		422,877.01
566 Tuition To Institutions of Higher Education and Technical Institutes		12,000.00		12,000.00
568 Tuition To Private Residential Rehabilitative Institutions (PRRI) [In-State] and Detention Centers		61,149.76		61,149.76
580 Travel	231.42			231.42
Total Other Purchased Services	\$215,898.70	\$314,645.49		\$530,544.19
600 <u>Supplies</u>				
610 General Supplies	14,456.87	506.92		14,963.79
640 Books and Periodicals	2,601.41	1,258.94		3,860.35
650 Supplies & Fees – Technology Related	1,138.18	980.00		2,118.18
Total Supplies	\$18,196.46	\$2,745.86		\$20,942.32
800 <u>Other Objects</u>				
820 Claims and Judgments Against the LEA	35,700.14	374,041.75		409,741.89
Total Other Objects	\$35,700.14	\$374,041.75		\$409,741.89
Total 1240 Academic Support	\$3,418,868.48	\$3,335,581.92	\$502,394.47	\$7,256,844.87

LEA : 123465303 Methacton SD

Printed 10/23/2018 2:38:37 PM

General Fund (10)

1241 Learning Support – Public	Elementary	Secondary	Federal	Total
100 <u>Personnel Services – Salaries</u>				
100 Personnel Services – Salaries	1,299,773.13	659,101.97	502,394.47	2,461,269.57
Total Personnel Services – Salaries	\$1,299,773.13	\$659,101.97	\$502,394.47	\$2,461,269.57
200 <u>Personnel Services – Employee Benefits</u>				
210 Group Insurance – Contracted Provider	5,996.04	5,996.04		11,992.08
220 Social Security Contributions	108,267.53	67,690.80		175,958.33
230 PSERS Retirement Contributions	512,481.85	304,040.93		816,522.78
260 Workers' Compensation	27,301.22	27,301.22		54,602.44
270 Group Insurance – Self-Insurance	717,080.38	717,080.38		1,434,160.76
Total Personnel Services – Employee Benefits	\$1,371,127.02	\$1,122,109.37		\$2,493,236.39
300 <u>Purchased Professional and Technical Services</u>				
322 Professional Educational Services – lus	665.39	109,703.99		110,369.38
329 Professional Educational Services – Other	140,337.24	59,903.90		200,241.14
330 Other Professional Services	2,152.50	209,193.75		211,346.25
Total Purchased Professional and Technical Services	\$143,155.13	\$378,801.64		\$521,956.77
500 <u>Other Purchased Services</u>				
561 Tuition To Other School Districts Within the State		34,286.00		34,286.00
562 Tuition To Pennsylvania Charter Schools	215,667.28	207,209.73		422,877.01
566 Tuition To Institutions of Higher Education and Technical Institutes		12,000.00		12,000.00
568 Tuition To Private Residential Rehabilitative Institutions (PRRI) [In-State] and Detention Centers		7,396.00		7,396.00
580 Travel	231.42			231.42
Total Other Purchased Services	\$215,898.70	\$260,891.73		\$476,790.43
600 <u>Supplies</u>				
610 General Supplies	8,303.27	335.89		8,639.16
640 Books and Periodicals	2,601.41	275.70		2,877.11
650 Supplies & Fees – Technology Related	1,138.18	980.00		2,118.18
Total Supplies	\$12,042.86	\$1,591.59		\$13,634.45
800 <u>Other Objects</u>				
820 Claims and Judgments Against the LEA	35,700.14	374,041.75		409,741.89
Total Other Objects	\$35,700.14	\$374,041.75		\$409,741.89
Total 1241 Learning Support – Public	\$3,077,696.98	\$2,796,538.05	\$502,394.47	\$6,376,629.50

LEA : 123465303 Methacton SD

Printed 10/23/2018 2:38:37 PM

General Fund (10)

1242 Learning Support – PRRI

<u>Elementary</u>	<u>Secondary</u>	<u>Federal</u>	<u>Total</u>
-------------------	------------------	----------------	--------------

500 Other Purchased Services

568 Tuition To Private Residential Rehabilitative Institutions (PRRI) [In-State] and Detention Centers	53,753.76		53,753.76
--	-----------	--	-----------

Total Other Purchased Services	\$53,753.76		\$53,753.76
---------------------------------------	--------------------	--	--------------------

Total 1242 Learning Support – PRRI	\$53,753.76		\$53,753.76
---	--------------------	--	--------------------

LEA : 123465303 Methacton SD

Printed 10/23/2018 2:38:37 PM

General Fund (10)

1243 Gifted Support	Elementary	Secondary	Federal	Total
100 <u>Personnel Services – Salaries</u>				
100 Personnel Services – Salaries	234,665.86	340,787.39		575,453.25
Total Personnel Services – Salaries	\$234,665.86	\$340,787.39		\$575,453.25
200 <u>Personnel Services – Employee Benefits</u>				
220 Social Security Contributions	16,638.82	25,402.29		42,041.11
230 PSERS Retirement Contributions	83,713.22	117,946.16		201,659.38
Total Personnel Services – Employee Benefits	\$100,352.04	\$143,348.45		\$243,700.49
600 <u>Supplies</u>				
610 General Supplies	6,153.60	171.03		6,324.63
640 Books and Periodicals		983.24		983.24
Total Supplies	\$6,153.60	\$1,154.27		\$7,307.87
Total 1243 Gifted Support	\$341,171.50	\$485,290.11		\$826,461.61

LEA : 123465303 Methacton SD

Printed 10/23/2018 2:38:37 PM

General Fund (10)

1260 Physical Support

	<u>Elementary</u>	<u>Secondary</u>	<u>Federal</u>	<u>Total</u>
300 <u>Purchased Professional and Technical Services</u>				
330 Other Professional Services			20,001.40	20,001.40
Total Purchased Professional and Technical Services			\$20,001.40	\$20,001.40
Total 1260 Physical Support			\$20,001.40	\$20,001.40

LEA : 123465303 Methacton SD

Printed 10/23/2018 2:38:37 PM

General Fund (10)				
1270 Multi-Handicapped Support	<u>Elementary</u>	<u>Secondary</u>	<u>Federal</u>	<u>Total</u>
300 <u>Purchased Professional and Technical Services</u>				
322 Professional Educational Services – Ius	100,036.71			100,036.71
329 Professional Educational Services – Other	8,747.45			8,747.45
Total Purchased Professional and Technical Services	\$108,784.16			\$108,784.16
500 <u>Other Purchased Services</u>				
567 Tuition To Approved Private Schools (APS) and PA Chartered Schools for the Deaf and Blind		5,170.00		5,170.00
Total Other Purchased Services		\$5,170.00		\$5,170.00
600 <u>Supplies</u>				
610 General Supplies	(27.92)			(27.92)
Total Supplies	(\$27.92)			(\$27.92)
800 <u>Other Objects</u>				
820 Claims and Judgments Against the LEA		123,655.00		123,655.00
Total Other Objects		\$123,655.00		\$123,655.00
Total 1270 Multi-Handicapped Support	\$108,756.24	\$128,825.00		\$237,581.24

LEA : 123465303 Methacton SD

Printed 10/23/2018 2:38:37 PM

General Fund (10)

1280 Early Intervention Support	<u>Elementary</u>	<u>Secondary</u>	<u>Federal</u>	<u>Total</u>
300 <u>Purchased Professional and Technical Services</u>				
322 Professional Educational Services – lus	59,335.68			59,335.68
Total Purchased Professional and Technical Services	\$59,335.68			\$59,335.68
600 <u>Supplies</u>				
650 Supplies & Fees – Technology Related			1,910.00	1,910.00
Total Supplies			\$1,910.00	\$1,910.00
Total 1280 Early Intervention Support	\$59,335.68		\$1,910.00	\$61,245.68

LEA : 123465303 Methacton SD

Printed 10/23/2018 2:38:37 PM

General Fund (10)

1290 Special Programs - Other Support	<u>Elementary</u>	<u>Secondary</u>	<u>Federal</u>	<u>Total</u>
100 <u>Personnel Services – Salaries</u>				
100 Personnel Services – Salaries	491,801.79	399,330.51	111,841.11	1,002,973.41
Total Personnel Services – Salaries	\$491,801.79	\$399,330.51	\$111,841.11	\$1,002,973.41
200 <u>Personnel Services – Employee Benefits</u>				
220 Social Security Contributions	35,287.08	37,203.02		72,490.10
230 PSERS Retirement Contributions	157,033.46	163,996.29		321,029.75
Total Personnel Services – Employee Benefits	\$192,320.54	\$201,199.31		\$393,519.85
300 <u>Purchased Professional and Technical Services</u>				
329 Professional Educational Services – Other	18,925.28	21,470.12		40,395.40
340 Technical Services	13,161.30	12,645.17		25,806.47
Total Purchased Professional and Technical Services	\$32,086.58	\$34,115.29		\$66,201.87
500 <u>Other Purchased Services</u>				
561 Tuition To Other School Districts Within the State	(4,845.00)			(4,845.00)
567 Tuition To Approved Private Schools (APS) and PA Chartered Schools for the Deaf and Blind	176,936.02	270,632.72		447,568.74
Total Other Purchased Services	\$172,091.02	\$270,632.72		\$442,723.74
Total 1290 Special Programs - Other Support	\$888,299.93	\$905,277.83	\$111,841.11	\$1,905,418.87

LEA : 123465303 Methacton SD

Printed 10/23/2018 2:38:37 PM

General Fund (10)

1300 Vocational Education

	Elementary	Secondary	Federal	Total
100 Personnel Services – Salaries				
100 Personnel Services – Salaries		747,289.91		747,289.91
Total Personnel Services – Salaries		\$747,289.91		\$747,289.91
200 Personnel Services – Employee Benefits				
210 Group Insurance – Contracted Provider		1,315.11		1,315.11
220 Social Security Contributions		54,803.30		54,803.30
230 PSERS Retirement Contributions		248,153.43		248,153.43
260 Workers' Compensation		5,987.95		5,987.95
270 Group Insurance – Self-Insurance		157,276.49		157,276.49
Total Personnel Services – Employee Benefits		\$467,536.28		\$467,536.28
400 Purchased Property Services				
430 Repairs and Maintenance Services		900.00		900.00
Total Purchased Property Services		\$900.00		\$900.00
500 Other Purchased Services				
564 Tuition To Career and Technology Centers		1,322,587.77		1,322,587.77
Total Other Purchased Services		\$1,322,587.77		\$1,322,587.77
600 Supplies				
610 General Supplies		13,739.74		13,739.74
640 Books and Periodicals		119.17		119.17
650 Supplies & Fees – Technology Related		2,669.73		2,669.73
Total Supplies		\$16,528.64		\$16,528.64
Total 1300 Vocational Education		\$2,554,842.60		\$2,554,842.60

LEA : 123465303 Methacton SD

Printed 10/23/2018 2:38:37 PM

General Fund (10)

1400 Other Instructional Programs – Elementary / Secondary	Elementary	Secondary	Federal	Total
100 <u>Personnel Services – Salaries</u>				
100 Personnel Services – Salaries		138,834.83		138,834.83
Total Personnel Services – Salaries		\$138,834.83		\$138,834.83
200 <u>Personnel Services – Employee Benefits</u>				
210 Group Insurance – Contracted Provider		222.04		222.04
220 Social Security Contributions		10,352.40		10,352.40
230 PSERS Retirement Contributions		43,316.27		43,316.27
260 Workers' Compensation		1,010.99		1,010.99
270 Group Insurance – Self-Insurance		26,554.19		26,554.19
Total Personnel Services – Employee Benefits		\$81,455.89		\$81,455.89
300 <u>Purchased Professional and Technical Services</u>				
322 Professional Educational Services – lus		19,350.00		19,350.00
Total Purchased Professional and Technical Services		\$19,350.00		\$19,350.00
400 <u>Purchased Property Services</u>				
430 Repairs and Maintenance Services		1,270.52		1,270.52
440 Rentals		5,108.98		5,108.98
Total Purchased Property Services		\$6,379.50		\$6,379.50
500 <u>Other Purchased Services</u>				
561 Tuition To Other School Districts Within the State	3,970.21	3,814.51		7,784.72
568 Tuition To Private Residential Rehabilitative Institutions (PRRI) [In-State] and Detention Centers		11,084.00		11,084.00
Total Other Purchased Services	\$3,970.21	\$14,898.51		\$18,868.72
600 <u>Supplies</u>				
610 General Supplies		125.00		125.00
620 Energy		1,344.36		1,344.36
Total Supplies		\$1,469.36		\$1,469.36
700 <u>Property</u>				
752 Capital Equipment – Original and Additional		17,197.15		17,197.15
Total Property		\$17,197.15		\$17,197.15
800 <u>Other Objects</u>				
810 Dues and Fees		442.00		442.00
Total Other Objects		\$442.00		\$442.00
Total 1400 Other Instructional Programs – Elementary / Secondary	\$3,970.21	\$280,027.24		\$283,997.45

LEA : 123465303 Methacton SD

Printed 10/23/2018 2:38:37 PM

General Fund (10)				
1410 Drivers' Education				
	<u>Elementary</u>	<u>Secondary</u>	<u>Federal</u>	<u>Total</u>
100 <u>Personnel Services – Salaries</u>				
100 Personnel Services – Salaries		122,439.60		122,439.60
Total Personnel Services – Salaries		\$122,439.60		\$122,439.60
200 <u>Personnel Services – Employee Benefits</u>				
210 Group Insurance – Contracted Provider		222.04		222.04
220 Social Security Contributions		9,098.18		9,098.18
230 PSERS Retirement Contributions		37,976.36		37,976.36
260 Workers' Compensation		1,010.99		1,010.99
270 Group Insurance – Self-Insurance		26,554.19		26,554.19
Total Personnel Services – Employee Benefits		\$74,861.76		\$74,861.76
400 <u>Purchased Property Services</u>				
430 Repairs and Maintenance Services		1,270.52		1,270.52
440 Rentals		5,108.98		5,108.98
Total Purchased Property Services		\$6,379.50		\$6,379.50
600 <u>Supplies</u>				
610 General Supplies		125.00		125.00
620 Energy		1,344.36		1,344.36
Total Supplies		\$1,469.36		\$1,469.36
700 <u>Property</u>				
752 Capital Equipment – Original and Additional		17,197.15		17,197.15
Total Property		\$17,197.15		\$17,197.15
800 <u>Other Objects</u>				
810 Dues and Fees		42.00		42.00
Total Other Objects		\$42.00		\$42.00
Total 1410 Drivers' Education		\$222,389.37		\$222,389.37

LEA : 123465303 Methacton SD

Printed 10/23/2018 2:38:37 PM

General Fund (10)

1420 Summer School

	<u>Elementary</u>	<u>Secondary</u>	<u>Federal</u>	<u>Total</u>
100 <u>Personnel Services – Salaries</u>				
100 Personnel Services – Salaries		10,537.73		10,537.73
Total Personnel Services – Salaries		\$10,537.73		\$10,537.73
200 <u>Personnel Services – Employee Benefits</u>				
220 Social Security Contributions		806.14		806.14
230 PSERS Retirement Contributions		3,432.15		3,432.15
Total Personnel Services – Employee Benefits		\$4,238.29		\$4,238.29
300 <u>Purchased Professional and Technical Services</u>				
322 Professional Educational Services – Ius		19,350.00		19,350.00
Total Purchased Professional and Technical Services		\$19,350.00		\$19,350.00
Total 1420 Summer School		\$34,126.02		\$34,126.02

LEA : 123465303 Methacton SD

Printed 10/23/2018 2:38:37 PM

General Fund (10)

1430 Homebound Instruction	<u>Elementary</u>	<u>Secondary</u>	<u>Federal</u>	<u>Total</u>
100 <u>Personnel Services – Salaries</u>				
100 Personnel Services – Salaries		5,857.50		5,857.50
Total Personnel Services – Salaries		\$5,857.50		\$5,857.50
200 <u>Personnel Services – Employee Benefits</u>				
220 Social Security Contributions		448.08		448.08
230 PSERS Retirement Contributions		1,907.76		1,907.76
Total Personnel Services – Employee Benefits		\$2,355.84		\$2,355.84
Total 1430 Homebound Instruction		\$8,213.34		\$8,213.34

LEA : 123465303 Methacton SD

Printed 10/23/2018 2:38:37 PM

General Fund (10)

1440 Alternative Regular Education Programs	<u>Elementary</u>	<u>Secondary</u>	<u>Federal</u>	<u>Total</u>
500 <u>Other Purchased Services</u>				
561 Tuition To Other School Districts Within the State	3,970.21	3,814.51		7,784.72
568 Tuition To Private Residential Rehabilitative Institutions (PRRI) [In-State] and Detention Centers		11,084.00		11,084.00
Total Other Purchased Services	\$3,970.21	\$14,898.51		\$18,868.72
800 <u>Other Objects</u>				
810 Dues and Fees		400.00		400.00
Total Other Objects		\$400.00		\$400.00
Total 1440 Alternative Regular Education Programs	\$3,970.21	\$15,298.51		\$19,268.72

LEA : 123465303 Methacton SD

Printed 10/23/2018 2:38:37 PM

General Fund (10)				
1441 Adjudicated / Court-Placed Programs	<u>Elementary</u>	<u>Secondary</u>	<u>Federal</u>	<u>Total</u>
500 <u>Other Purchased Services</u>				
561 Tuition To Other School Districts Within the State	3,970.21	3,814.51		7,784.72
568 Tuition To Private Residential Rehabilitative Institutions (PRRI) [In-State] and Detention Centers		11,084.00		11,084.00
Total Other Purchased Services	\$3,970.21	\$14,898.51		\$18,868.72
Total 1441 Adjudicated / Court-Placed Programs	\$3,970.21	\$14,898.51		\$18,868.72

LEA : 123465303 Methacton SD

Printed 10/23/2018 2:38:37 PM

General Fund (10)

1442 Alternative Education Programs	<u>Elementary</u>	<u>Secondary</u>	<u>Federal</u>	<u>Total</u>
800 <u>Other Objects</u>				
810 Dues and Fees		400.00		400.00
Total Other Objects		\$400.00		\$400.00
Total 1442 Alternative Education Programs		\$400.00		\$400.00

LEA : 123465303 Methacton SD

Printed 10/23/2018 2:38:37 PM

General Fund (10)

1500 Nonpublic School Programs

300 Purchased Professional and Technical Services

	<u>Elementary</u>	<u>Secondary</u>	<u>Federal</u>	<u>Total</u>
322 Professional Educational Services – lus			2,434.00	2,434.00
Total Purchased Professional and Technical Services			\$2,434.00	\$2,434.00
Total 1500 Nonpublic School Programs			\$2,434.00	\$2,434.00

LEA : 123465303 Methacton SD

Printed 10/23/2018 2:38:37 PM

General Fund (10)

1600 Adult Education Programs	<u>Elementary</u>	<u>Secondary</u>	<u>Federal</u>	<u>Total</u>
100 <u>Personnel Services – Salaries</u>				
100 Personnel Services – Salaries				16,388.63
Total Personnel Services – Salaries				\$16,388.63
200 <u>Personnel Services – Employee Benefits</u>				
220 Social Security Contributions				1,206.43
Total Personnel Services – Employee Benefits				\$1,206.43
300 <u>Purchased Professional and Technical Services</u>				
330 Other Professional Services				117,360.91
390 Other Purchased Professional and Technical Services				279.13
Total Purchased Professional and Technical Services				\$117,640.04
500 <u>Other Purchased Services</u>				
530 Communications				1,567.60
550 Printing and Binding				10,738.39
Total Other Purchased Services				\$12,305.99
600 <u>Supplies</u>				
610 General Supplies				3,581.90
Total Supplies				\$3,581.90
Total 1600 Adult Education Programs				\$151,122.99

LEA : 123465303 Methacton SD

Printed 10/23/2018 2:38:39 PM

General Fund (10)

2000 Support Services		<u>Total</u>
100 <u>Personnel Services – Salaries</u>		
100 Personnel Services – Salaries	12,396,078.26	
Total Personnel Services – Salaries	\$12,396,078.26	
200 <u>Personnel Services – Employee Benefits</u>		
210 Group Insurance – Contracted Provider	25,180.03	
220 Social Security Contributions	899,369.73	
230 PSERS Retirement Contributions	3,947,690.08	
240 Tuition Reimbursement	160,773.35	
260 Workers' Compensation	114,888.00	
270 Group Insurance – Self-Insurance	2,934,842.97	
299 All Other Employee Benefits	26,260.69	
Total Personnel Services – Employee Benefits	\$8,109,004.85	
300 <u>Purchased Professional and Technical Services</u>		
310 Official / Administrative Services	131,347.99	
322 Professional Educational Services – Ius	3,657.69	
324 Professional Educational Services – Employee Training and Development Services	32,250.96	
330 Other Professional Services	1,258,651.91	
390 Other Purchased Professional and Technical Services	158,619.87	
Total Purchased Professional and Technical Services	\$1,584,528.42	
400 <u>Purchased Property Services</u>		
410 Cleaning Services	104,186.47	
420 Utility Services	239,077.67	
430 Repairs and Maintenance Services	910,606.99	
440 Rentals	263,059.17	
450 Construction Services	(1,861.96)	
460 Extermination Services	9,073.50	
490 Other Purchased Property Services	289.00	
Total Purchased Property Services	\$1,524,430.84	
500 <u>Other Purchased Services</u>		
511 Student Transportation Services from Another LEA Within the State	3,971.00	
513 Contracted Carriers	6,300,399.60	
516 Student Transportation Services From the IU	474,316.72	
519 Student Transportation Services From Other Sources	3,600.00	
520 Insurance – General	211,390.75	
530 Communications	133,308.71	
549 Other Advertising/Public Relations	14,565.66	
550 Printing and Binding	14,864.84	
580 Travel	49,728.43	
591 Services Purchased Locally	711.43	
595 IU Payments By Withholding	69,059.56	
596 Direct Payments To Intermediate Units	5,210.00	
Total Other Purchased Services	\$7,281,126.70	
600 <u>Supplies</u>		
610 General Supplies	780,739.53	

LEA : 123465303 Methacton SD

Printed 10/23/2018 2:38:39 PM

General Fund (10)

2000 Support Services

Total

600 <u>Supplies</u>	
620 Energy	1,241,001.59
630 Food	2,235.72
640 Books and Periodicals	63,040.33
650 Supplies & Fees – Technology Related	35,958.64
Total Supplies	\$2,122,975.81
700 <u>Property</u>	
752 Capital Equipment – Original and Additional	76,103.89
762 Capitalized Equipment - Replacement	264,236.84
Total Property	\$340,340.73
800 <u>Other Objects</u>	
810 Dues and Fees	54,163.55
820 Claims and Judgments Against the LEA	65.50
890 Miscellaneous Expenditures	(1,154.95)
Total Other Objects	\$53,074.10
Total 2000 Support Services	\$33,411,559.71

LEA : 123465303 Methacton SD

Printed 10/23/2018 2:38:39 PM

General Fund (10)

2100 Support Services – Students	Elementary	Secondary	Federal	Total
100 <u>Personnel Services – Salaries</u>				
100 Personnel Services – Salaries	1,069,587.71	1,293,631.93	524.70	2,498,378.16
Total Personnel Services – Salaries	\$1,069,587.71	\$1,293,631.93	\$524.70	\$2,498,378.16
200 <u>Personnel Services – Employee Benefits</u>				
210 Group Insurance – Contracted Provider	3,070.00	2,949.60		6,019.60
220 Social Security Contributions	77,997.98	93,791.90	40.14	181,426.24
230 PSERS Retirement Contributions	344,286.38	417,649.18	170.88	805,956.70
260 Workers' Compensation	13,320.10	12,797.74		26,117.84
270 Group Insurance – Self-Insurance	342,068.83	328,654.35		670,723.18
299 All Other Employee Benefits	2,510.00	1,490.00		4,000.00
Total Personnel Services – Employee Benefits	\$783,253.29	\$857,332.77	\$211.02	\$1,694,243.56
300 <u>Purchased Professional and Technical Services</u>				
322 Professional Educational Services – Ius		3,657.69		3,657.69
330 Other Professional Services		75,242.29	1,951.40	281,563.69
Total Purchased Professional and Technical Services		\$78,899.98	\$1,951.40	\$285,221.38
500 <u>Other Purchased Services</u>				
580 Travel	2,366.53	1,734.31		4,642.84
Total Other Purchased Services	\$2,366.53	\$1,734.31		\$4,642.84
600 <u>Supplies</u>				
610 General Supplies	20,480.26	3,777.71	6,217.54	30,475.51
630 Food		164.00		164.00
640 Books and Periodicals	405.12	772.10		1,177.22
650 Supplies & Fees – Technology Related	1,041.00			1,041.00
Total Supplies	\$21,926.38	\$4,713.81	\$6,217.54	\$32,857.73
800 <u>Other Objects</u>				
810 Dues and Fees	160.65	214.35		435.00
890 Miscellaneous Expenditures		(3,004.95)	1,850.00	(1,154.95)
Total Other Objects	\$160.65	(\$2,790.60)	\$1,850.00	(\$719.95)
Total 2100 Support Services – Students	\$1,877,294.56	\$2,233,522.20	\$10,754.66	\$4,514,623.72

LEA : 123465303 Methacton SD

Printed 10/23/2018 2:38:39 PM

General Fund (10)

2110 Supervision of Student Services	Elementary	Secondary	Federal	Total
100 <u>Personnel Services – Salaries</u>				
100 Personnel Services – Salaries	340,023.50	326,689.23		666,712.73
Total Personnel Services – Salaries	\$340,023.50	\$326,689.23		\$666,712.73
200 <u>Personnel Services – Employee Benefits</u>				
210 Group Insurance – Contracted Provider	743.31	714.15		1,457.46
220 Social Security Contributions	24,597.90	23,633.27		48,231.17
230 PSERS Retirement Contributions	107,390.87	103,179.46		210,570.33
260 Workers' Compensation	2,726.20	2,619.28		5,345.48
270 Group Insurance – Self-Insurance	63,814.65	61,312.11		125,126.76
299 All Other Employee Benefits	2,510.00	1,490.00		4,000.00
Total Personnel Services – Employee Benefits	\$201,782.93	\$192,948.27		\$394,731.20
300 <u>Purchased Professional and Technical Services</u>				
322 Professional Educational Services – Ius		3,657.69		3,657.69
Total Purchased Professional and Technical Services		\$3,657.69		\$3,657.69
500 <u>Other Purchased Services</u>				
580 Travel	2,366.53	1,324.29		3,690.82
Total Other Purchased Services	\$2,366.53	\$1,324.29		\$3,690.82
600 <u>Supplies</u>				
610 General Supplies	289.54	763.86		1,053.40
Total Supplies	\$289.54	\$763.86		\$1,053.40
800 <u>Other Objects</u>				
810 Dues and Fees	160.65	154.35		315.00
Total Other Objects	\$160.65	\$154.35		\$315.00
Total 2110 Supervision of Student Services	\$544,623.15	\$525,537.69		\$1,070,160.84

LEA : 123465303 Methacton SD

Printed 10/23/2018 2:38:39 PM

General Fund (10)

2111 Supervision of Student Services – Head of Component	Elementary	Secondary	Federal	Total
100 <u>Personnel Services – Salaries</u>				
100 Personnel Services – Salaries	125,543.63	120,620.35		246,163.98
Total Personnel Services – Salaries	\$125,543.63	\$120,620.35		\$246,163.98
200 <u>Personnel Services – Employee Benefits</u>				
210 Group Insurance – Contracted Provider	215.01	206.57		421.58
220 Social Security Contributions	8,819.73	8,473.85		17,293.58
230 PSERS Retirement Contributions	39,649.66	38,094.77		77,744.43
260 Workers' Compensation	1,168.37	1,122.55		2,290.92
270 Group Insurance – Self-Insurance	21,483.69	20,641.19		42,124.88
299 All Other Employee Benefits	510.00	490.00		1,000.00
Total Personnel Services – Employee Benefits	\$71,846.46	\$69,028.93		\$140,875.39
500 <u>Other Purchased Services</u>				
580 Travel		781.10		781.10
Total Other Purchased Services		\$781.10		\$781.10
600 <u>Supplies</u>				
610 General Supplies	289.54	763.86		1,053.40
Total Supplies	\$289.54	\$763.86		\$1,053.40
800 <u>Other Objects</u>				
810 Dues and Fees	160.65	154.35		315.00
Total Other Objects	\$160.65	\$154.35		\$315.00
Total 2111 Supervision of Student Services – Head of Component	\$197,840.28	\$191,348.59		\$389,188.87

LEA : 123465303 Methacton SD

Printed 10/23/2018 2:38:39 PM

General Fund (10)

2119 Supervision of Student Services – All Other Supervision	Elementary	Secondary	Federal	Total
100 <u>Personnel Services – Salaries</u>				
100 Personnel Services – Salaries	214,479.87	206,068.88		420,548.75
Total Personnel Services – Salaries	\$214,479.87	\$206,068.88		\$420,548.75
200 <u>Personnel Services – Employee Benefits</u>				
210 Group Insurance – Contracted Provider	528.30	507.58		1,035.88
220 Social Security Contributions	15,778.17	15,159.42		30,937.59
230 PSERS Retirement Contributions	67,741.21	65,084.69		132,825.90
260 Workers' Compensation	1,557.83	1,496.73		3,054.56
270 Group Insurance – Self-Insurance	42,330.96	40,670.92		83,001.88
299 All Other Employee Benefits	2,000.00	1,000.00		3,000.00
Total Personnel Services – Employee Benefits	\$129,936.47	\$123,919.34		\$253,855.81
300 <u>Purchased Professional and Technical Services</u>				
322 Professional Educational Services – Ius		3,657.69		3,657.69
Total Purchased Professional and Technical Services		\$3,657.69		\$3,657.69
500 <u>Other Purchased Services</u>				
580 Travel	2,366.53	543.19		2,909.72
Total Other Purchased Services	\$2,366.53	\$543.19		\$2,909.72
Total 2119 Supervision of Student Services – All Other Supervision	\$346,782.87	\$334,189.10		\$680,971.97

LEA : 123465303 Methacton SD

Printed 10/23/2018 2:38:39 PM

General Fund (10)

2120 Guidance Services	Elementary	Secondary	Federal	Total
100 <u>Personnel Services – Salaries</u>				
100 Personnel Services – Salaries	528,257.75	860,980.62	524.70	1,389,763.07
Total Personnel Services – Salaries	\$528,257.75	\$860,980.62	\$524.70	\$1,389,763.07
200 <u>Personnel Services – Employee Benefits</u>				
210 Group Insurance – Contracted Provider	2,326.69	2,235.45		4,562.14
220 Social Security Contributions	38,905.26	62,473.49	40.14	101,418.89
230 PSERS Retirement Contributions	171,329.75	279,957.82	170.88	451,458.45
260 Workers' Compensation	10,593.90	10,178.46		20,772.36
270 Group Insurance – Self-Insurance	278,254.18	267,342.24		545,596.42
Total Personnel Services – Employee Benefits	\$501,409.78	\$622,187.46	\$211.02	\$1,123,808.26
300 <u>Purchased Professional and Technical Services</u>				
330 Other Professional Services		10,156.00		10,156.00
Total Purchased Professional and Technical Services		\$10,156.00		\$10,156.00
500 <u>Other Purchased Services</u>				
580 Travel		55.95		55.95
Total Other Purchased Services		\$55.95		\$55.95
600 <u>Supplies</u>				
610 General Supplies	4,415.68	189.59	6,217.54	10,822.81
630 Food		164.00		164.00
640 Books and Periodicals	300.12	772.10		1,072.22
Total Supplies	\$4,715.80	\$1,125.69	\$6,217.54	\$12,059.03
800 <u>Other Objects</u>				
810 Dues and Fees		60.00		60.00
890 Miscellaneous Expenditures		(3,004.95)	1,850.00	(1,154.95)
Total Other Objects		(\$2,944.95)	\$1,850.00	(\$1,094.95)
Total 2120 Guidance Services	\$1,034,383.33	\$1,491,560.77	\$8,803.26	\$2,534,747.36

LEA : 123465303 Methacton SD

Printed 10/23/2018 2:38:39 PM

General Fund (10)

2130 Attendance Services

	<u>Elementary</u>	<u>Secondary</u>	<u>Federal</u>	<u>Total</u>
100 <u>Personnel Services – Salaries</u>				
100 Personnel Services – Salaries				134,633.82
Total Personnel Services – Salaries				\$134,633.82
200 <u>Personnel Services – Employee Benefits</u>				
220 Social Security Contributions				9,596.22
230 PSERS Retirement Contributions				43,850.26
Total Personnel Services – Employee Benefits				\$53,446.48
500 <u>Other Purchased Services</u>				
580 Travel				542.00
Total Other Purchased Services				\$542.00
800 <u>Other Objects</u>				
810 Dues and Fees				60.00
Total Other Objects				\$60.00
Total 2130 Attendance Services				\$188,682.30

LEA : 123465303 Methacton SD

Printed 10/23/2018 2:38:39 PM

General Fund (10)				
2140 Psychological Services	<u>Elementary</u>	<u>Secondary</u>	<u>Federal</u>	<u>Total</u>
100 <u>Personnel Services – Salaries</u>				
100 Personnel Services – Salaries	201,306.46	105,962.08		307,268.54
Total Personnel Services – Salaries	\$201,306.46	\$105,962.08		\$307,268.54
200 <u>Personnel Services – Employee Benefits</u>				
220 Social Security Contributions	14,494.82	7,685.14		22,179.96
230 PSERS Retirement Contributions	65,565.76	34,511.90		100,077.66
Total Personnel Services – Employee Benefits	\$80,060.58	\$42,197.04		\$122,257.62
300 <u>Purchased Professional and Technical Services</u>				
330 Other Professional Services		65,086.29	1,951.40	67,037.69
Total Purchased Professional and Technical Services		\$65,086.29	\$1,951.40	\$67,037.69
500 <u>Other Purchased Services</u>				
580 Travel		354.07		354.07
Total Other Purchased Services		\$354.07		\$354.07
600 <u>Supplies</u>				
610 General Supplies	15,775.04	2,824.26		18,599.30
640 Books and Periodicals	105.00			105.00
650 Supplies & Fees – Technology Related	1,041.00			1,041.00
Total Supplies	\$16,921.04	\$2,824.26		\$19,745.30
Total 2140 Psychological Services	\$298,288.08	\$216,423.74	\$1,951.40	\$516,663.22

LEA : 123465303 Methacton SD

Printed 10/23/2018 2:38:39 PM

General Fund (10)

2160 Social Work Services

<u>Elementary</u>	<u>Secondary</u>	<u>Federal</u>	<u>Total</u>
-------------------	------------------	----------------	--------------

300 Purchased Professional and Technical Services

330 Other Professional Services			204,370.00
---------------------------------	--	--	------------

Total Purchased Professional and Technical Services			\$204,370.00
Total 2160 Social Work Services			\$204,370.00

LEA : 123465303 Methacton SD

Printed 10/23/2018 2:38:39 PM

General Fund (10)

2200 Support Services – Instructional Staff	Elementary	Secondary	Federal	Total
100 <u>Personnel Services – Salaries</u>				
100 Personnel Services – Salaries	798,620.23	499,307.62	74,404.80	1,372,332.65
Total Personnel Services – Salaries	\$798,620.23	\$499,307.62	\$74,404.80	\$1,372,332.65
200 <u>Personnel Services – Employee Benefits</u>				
210 Group Insurance – Contracted Provider	1,336.11	1,283.71		2,619.82
220 Social Security Contributions	58,414.24	37,092.48	3,964.46	99,471.18
230 PSERS Retirement Contributions	259,389.99	162,011.66	20,530.17	441,931.82
240 Tuition Reimbursement	84,079.20	52,400.15		136,479.35
260 Workers' Compensation	6,083.56	5,844.99		11,928.55
270 Group Insurance – Self-Insurance	159,787.74	153,521.55		313,309.29
299 All Other Employee Benefits	1,344.57	1,291.85		2,636.42
Total Personnel Services – Employee Benefits	\$570,435.41	\$413,446.39	\$24,494.63	\$1,008,376.43
300 <u>Purchased Professional and Technical Services</u>				
324 Professional Educational Services – Employee Training and Development Services	15,850.29	15,228.71	77.96	31,156.96
Total Purchased Professional and Technical Services	\$15,850.29	\$15,228.71	\$77.96	\$31,156.96
400 <u>Purchased Property Services</u>				
430 Repairs and Maintenance Services		1,705.57		1,705.57
Total Purchased Property Services		\$1,705.57		\$1,705.57
500 <u>Other Purchased Services</u>				
550 Printing and Binding	1,694.95	383.13		2,078.08
580 Travel	6,320.07	5,950.06	11,164.43	23,434.56
Total Other Purchased Services	\$8,015.02	\$6,333.19	\$11,164.43	\$25,512.64
600 <u>Supplies</u>				
610 General Supplies	8,011.20	30,231.16		38,242.36
630 Food	132.68	127.48		260.16
640 Books and Periodicals	31,367.75	26,996.54	801.72	59,166.01
650 Supplies & Fees – Technology Related		4,486.98	40.00	4,526.98
Total Supplies	\$39,511.63	\$61,842.16	\$841.72	\$102,195.51
700 <u>Property</u>				
752 Capital Equipment – Original and Additional	1,135.37	2,899.00		4,034.37
Total Property	\$1,135.37	\$2,899.00		\$4,034.37
800 <u>Other Objects</u>				
810 Dues and Fees	1,310.69	163.81		1,474.50
Total Other Objects	\$1,310.69	\$163.81		\$1,474.50
Total 2200 Support Services – Instructional Staff	\$1,434,878.64	\$1,000,926.45	\$110,983.54	\$2,546,788.63

LEA : 123465303 Methacton SD

Printed 10/23/2018 2:38:39 PM

General Fund (10)				
2220 Technology Support Services	<u>Elementary</u>	<u>Secondary</u>	<u>Federal</u>	<u>Total</u>
100 <u>Personnel Services – Salaries</u>				
100 Personnel Services – Salaries	198,913.69	106,927.45		305,841.14
Total Personnel Services – Salaries	\$198,913.69	\$106,927.45		\$305,841.14
200 <u>Personnel Services – Employee Benefits</u>				
220 Social Security Contributions	14,695.29	8,010.16		22,705.45
230 PSERS Retirement Contributions	64,758.46	34,826.25		99,584.71
Total Personnel Services – Employee Benefits	\$79,453.75	\$42,836.41		\$122,290.16
500 <u>Other Purchased Services</u>				
550 Printing and Binding	1,694.95	383.13		2,078.08
Total Other Purchased Services	\$1,694.95	\$383.13		\$2,078.08
600 <u>Supplies</u>				
610 General Supplies	5,782.93	24,923.71		30,706.64
650 Supplies & Fees – Technology Related		3,742.00		3,742.00
Total Supplies	\$5,782.93	\$28,665.71		\$34,448.64
700 <u>Property</u>				
752 Capital Equipment – Original and Additional	1,135.37	2,899.00		4,034.37
Total Property	\$1,135.37	\$2,899.00		\$4,034.37
Total 2220 Technology Support Services	\$286,980.69	\$181,711.70		\$468,692.39

LEA : 123465303 Methacton SD

Printed 10/23/2018 2:38:39 PM

General Fund (10)				
2250 School Library Services	<u>Elementary</u>	<u>Secondary</u>	<u>Federal</u>	<u>Total</u>
100 <u>Personnel Services – Salaries</u>				
100 Personnel Services – Salaries	381,804.86	171,045.25		552,850.11
Total Personnel Services – Salaries	\$381,804.86	\$171,045.25		\$552,850.11
200 <u>Personnel Services – Employee Benefits</u>				
210 Group Insurance – Contracted Provider	1,336.11	1,283.71		2,619.82
220 Social Security Contributions	27,377.83	12,466.17		39,844.00
230 PSERS Retirement Contributions	124,310.91	55,721.23		180,032.14
260 Workers' Compensation	6,083.56	5,844.99		11,928.55
270 Group Insurance – Self-Insurance	159,787.74	153,521.55		313,309.29
Total Personnel Services – Employee Benefits	\$318,896.15	\$228,837.65		\$547,733.80
400 <u>Purchased Property Services</u>				
430 Repairs and Maintenance Services		1,705.57		1,705.57
Total Purchased Property Services		\$1,705.57		\$1,705.57
600 <u>Supplies</u>				
610 General Supplies	1,332.99	5,231.21		6,564.20
640 Books and Periodicals	28,546.69	25,559.36		54,106.05
650 Supplies & Fees – Technology Related		744.98		744.98
Total Supplies	\$29,879.68	\$31,535.55		\$61,415.23
800 <u>Other Objects</u>				
810 Dues and Fees		130.00		130.00
Total Other Objects		\$130.00		\$130.00
Total 2250 School Library Services	\$730,580.69	\$433,254.02		\$1,163,834.71

LEA : 123465303 Methacton SD

Printed 10/23/2018 2:38:39 PM

General Fund (10)

2260 Instruction and Curriculum Development Services	Elementary	Secondary	Federal	Total
100 <u>Personnel Services – Salaries</u>				
100 Personnel Services – Salaries	181,656.29	186,510.92		368,167.21
Total Personnel Services – Salaries	\$181,656.29	\$186,510.92		\$368,167.21
200 <u>Personnel Services – Employee Benefits</u>				
220 Social Security Contributions	13,027.13	13,432.12		26,459.25
230 PSERS Retirement Contributions	57,787.02	59,422.09		117,209.11
299 All Other Employee Benefits	834.57	801.85		1,636.42
Total Personnel Services – Employee Benefits	\$71,648.72	\$73,656.06		\$145,304.78
500 <u>Other Purchased Services</u>				
580 Travel	29.00			29.00
Total Other Purchased Services	\$29.00			\$29.00
600 <u>Supplies</u>				
610 General Supplies	815.93			815.93
630 Food	13.19	12.67		25.86
640 Books and Periodicals	605.01			605.01
Total Supplies	\$1,434.13	\$12.67		\$1,446.80
800 <u>Other Objects</u>				
810 Dues and Fees	1,275.50			1,275.50
Total Other Objects	\$1,275.50			\$1,275.50
Total 2260 Instruction and Curriculum Development Services	\$256,043.64	\$260,179.65		\$516,223.29

LEA : 123465303 Methacton SD

Printed 10/23/2018 2:38:39 PM

General Fund (10)

2270 Instructional Staff Professional Development Services	<u>Elementary</u>	<u>Secondary</u>	<u>Federal</u>	<u>Total</u>
100 <u>Personnel Services – Salaries</u>				
100 Personnel Services – Salaries	36,245.39	34,824.00	74,404.80	145,474.19
Total Personnel Services – Salaries	\$36,245.39	\$34,824.00	\$74,404.80	\$145,474.19
200 <u>Personnel Services – Employee Benefits</u>				
220 Social Security Contributions	3,313.99	3,184.03	3,964.46	10,462.48
230 PSERS Retirement Contributions	12,533.60	12,042.09	20,530.17	45,105.86
240 Tuition Reimbursement	84,079.20	52,400.15		136,479.35
299 All Other Employee Benefits	510.00	490.00		1,000.00
Total Personnel Services – Employee Benefits	\$100,436.79	\$68,116.27	\$24,494.63	\$193,047.69
300 <u>Purchased Professional and Technical Services</u>				
324 Professional Educational Services – Employee Training and Development Services	15,850.29	15,228.71	77.96	31,156.96
Total Purchased Professional and Technical Services	\$15,850.29	\$15,228.71	\$77.96	\$31,156.96
500 <u>Other Purchased Services</u>				
580 Travel	6,291.07	5,950.06	11,164.43	23,405.56
Total Other Purchased Services	\$6,291.07	\$5,950.06	\$11,164.43	\$23,405.56
600 <u>Supplies</u>				
610 General Supplies	79.35	76.24		155.59
630 Food	119.49	114.81		234.30
640 Books and Periodicals	2,216.05	1,437.18	801.72	4,454.95
650 Supplies & Fees – Technology Related			40.00	40.00
Total Supplies	\$2,414.89	\$1,628.23	\$841.72	\$4,884.84
800 <u>Other Objects</u>				
810 Dues and Fees	35.19	33.81		69.00
Total Other Objects	\$35.19	\$33.81		\$69.00
Total 2270 Instructional Staff Professional Development Services	\$161,273.62	\$125,781.08	\$110,983.54	\$398,038.24

LEA : 123465303 Methacton SD

Printed 10/23/2018 2:38:39 PM

General Fund (10)

2300 Support Services – Administration	Elementary	Secondary	Federal	Total
100 <u>Personnel Services – Salaries</u>				
100 Personnel Services – Salaries	1,348,566.19	1,261,609.48		3,354,215.83
Total Personnel Services – Salaries	\$1,348,566.19	\$1,261,609.48		\$3,354,215.83
200 <u>Personnel Services – Employee Benefits</u>				
210 Group Insurance – Contracted Provider	3,076.55	2,955.89		6,032.44
220 Social Security Contributions	95,013.13	91,951.07		237,616.02
230 PSERS Retirement Contributions	423,799.54	394,651.48		1,035,321.95
260 Workers' Compensation	14,207.78	13,650.61		27,858.39
270 Group Insurance – Self-Insurance	373,174.50	358,540.19		731,714.69
299 All Other Employee Benefits	5,000.00	5,639.83		13,639.83
Total Personnel Services – Employee Benefits	\$914,271.50	\$867,389.07		\$2,052,183.32
300 <u>Purchased Professional and Technical Services</u>				
310 Official / Administrative Services				131,347.99
324 Professional Educational Services – Employee Training and Development Services				59.00
330 Other Professional Services				531,945.37
390 Other Purchased Professional and Technical Services				999.00
Total Purchased Professional and Technical Services				\$664,351.36
400 <u>Purchased Property Services</u>				
440 Rentals		5,495.54		5,940.74
Total Purchased Property Services		\$5,495.54		\$5,940.74
500 <u>Other Purchased Services</u>				
530 Communications				4,282.70
549 Other Advertising/Public Relations				11,280.04
550 Printing and Binding	821.44	9,185.87		12,786.76
580 Travel	1,061.65	173.22		14,476.69
591 Services Purchased Locally	281.57	429.86		711.43
Total Other Purchased Services	\$2,164.66	\$9,788.95		\$43,537.62
600 <u>Supplies</u>				
610 General Supplies	1,668.69	2,431.52		18,922.75
630 Food		515.26		2,605.89
640 Books and Periodicals	454.87	912.23		2,431.10
650 Supplies & Fees – Technology Related				20,170.79
Total Supplies	\$2,123.56	\$3,859.01		\$44,130.53
700 <u>Property</u>				
752 Capital Equipment – Original and Additional		3,230.16		3,230.16
762 Capitalized Equipment - Replacement				35,902.00
Total Property		\$3,230.16		\$39,132.16
800 <u>Other Objects</u>				
810 Dues and Fees	3,774.00	5,189.80		27,048.20
820 Claims and Judgments Against the LEA				65.50
Total Other Objects	\$3,774.00	\$5,189.80		\$27,113.70
Total 2300 Support Services – Administration	\$2,270,899.91	\$2,156,562.01		\$6,230,605.26

LEA : 123465303 Methacton SD

Printed 10/23/2018 2:38:39 PM

General Fund (10)

2310 Board Services

Elementary Secondary Federal Total

300 <u>Purchased Professional and Technical Services</u>				
324 Professional Educational Services – Employee Training and Development Services				59.00
Total Purchased Professional and Technical Services				\$59.00
500 <u>Other Purchased Services</u>				
549 Other Advertising/Public Relations				8,654.62
580 Travel				2,617.33
Total Other Purchased Services				\$11,271.95
600 <u>Supplies</u>				
610 General Supplies				286.36
630 Food				110.56
640 Books and Periodicals				1,064.00
Total Supplies				\$1,460.92
800 <u>Other Objects</u>				
810 Dues and Fees				13,795.00
820 Claims and Judgments Against the LEA				65.50
Total Other Objects				\$13,860.50
Total 2310 Board Services				\$26,652.37

LEA : 123465303 Methacton SD

Printed 10/23/2018 2:38:39 PM

General Fund (10)

2330 Tax Assessment and Collection Services	<u>Elementary</u>	<u>Secondary</u>	<u>Federal</u>	<u>Total</u>
100 <u>Personnel Services – Salaries</u>				
100 Personnel Services – Salaries				41,692.49
Total Personnel Services – Salaries				\$41,692.49
200 <u>Personnel Services – Employee Benefits</u>				
220 Social Security Contributions				3,189.23
Total Personnel Services – Employee Benefits				\$3,189.23
300 <u>Purchased Professional and Technical Services</u>				
310 Official / Administrative Services				131,347.99
330 Other Professional Services				62,061.00
Total Purchased Professional and Technical Services				\$193,408.99
600 <u>Supplies</u>				
610 General Supplies				10,434.36
Total Supplies				\$10,434.36
Total 2330 Tax Assessment and Collection Services				\$248,725.07

LEA : 123465303 Methacton SD

Printed 10/23/2018 2:38:39 PM

General Fund (10)				
2340 Staff Relations and Negotiations Services	<u>Elementary</u>	<u>Secondary</u>	<u>Federal</u>	<u>Total</u>
100 <u>Personnel Services – Salaries</u>				
100 Personnel Services – Salaries				261,711.55
Total Personnel Services – Salaries				\$261,711.55
200 <u>Personnel Services – Employee Benefits</u>				
220 Social Security Contributions				18,573.37
230 PSERS Retirement Contributions				82,864.19
299 All Other Employee Benefits				1,000.00
Total Personnel Services – Employee Benefits				\$102,437.56
300 <u>Purchased Professional and Technical Services</u>				
330 Other Professional Services				9,230.40
390 Other Purchased Professional and Technical Services				999.00
Total Purchased Professional and Technical Services				\$10,229.40
500 <u>Other Purchased Services</u>				
530 Communications				6.70
549 Other Advertising/Public Relations				2,625.42
580 Travel				4,834.30
Total Other Purchased Services				\$7,466.42
600 <u>Supplies</u>				
610 General Supplies				1,277.86
630 Food				419.04
650 Supplies & Fees – Technology Related				20,074.91
Total Supplies				\$21,771.81
800 <u>Other Objects</u>				
810 Dues and Fees				1,265.00
Total Other Objects				\$1,265.00
Total 2340 Staff Relations and Negotiations Services				\$404,881.74

LEA : 123465303 Methacton SD

Printed 10/23/2018 2:38:39 PM

General Fund (10)				
2350 Legal and Accounting Services	<u>Elementary</u>	<u>Secondary</u>	<u>Federal</u>	<u>Total</u>
300 <u>Purchased Professional and Technical Services</u>				
330 Other Professional Services				432,897.76
Total Purchased Professional and Technical Services				\$432,897.76
Total 2350 Legal and Accounting Services				\$432,897.76

LEA : 123465303 Methacton SD

Printed 10/23/2018 2:38:39 PM

General Fund (10)				
2360 Office of the Superintendent / Executive Director Services	<u>Elementary</u>	<u>Secondary</u>	<u>Federal</u>	<u>Total</u>
100 <u>Personnel Services – Salaries</u>				
100 Personnel Services – Salaries				278,330.08
Total Personnel Services – Salaries				\$278,330.08
200 <u>Personnel Services – Employee Benefits</u>				
220 Social Security Contributions				17,064.30
230 PSERS Retirement Contributions				82,838.14
299 All Other Employee Benefits				1,000.00
Total Personnel Services – Employee Benefits				\$100,902.44
300 <u>Purchased Professional and Technical Services</u>				
330 Other Professional Services				1,937.50
Total Purchased Professional and Technical Services				\$1,937.50
400 <u>Purchased Property Services</u>				
440 Rentals				445.20
Total Purchased Property Services				\$445.20
500 <u>Other Purchased Services</u>				
580 Travel				5,615.79
Total Other Purchased Services				\$5,615.79
600 <u>Supplies</u>				
610 General Supplies				1,605.34
630 Food				1,159.95
Total Supplies				\$2,765.29
800 <u>Other Objects</u>				
810 Dues and Fees				2,200.00
Total Other Objects				\$2,200.00
Total 2360 Office of the Superintendent / Executive Director Services				\$392,196.30

LEA : 123465303 Methacton SD

Printed 10/23/2018 2:38:39 PM

General Fund (10)				
2370 Community Relations Services				
	<u>Elementary</u>	<u>Secondary</u>	<u>Federal</u>	<u>Total</u>
100 <u>Personnel Services – Salaries</u>				
100 Personnel Services – Salaries				162,306.04
Total Personnel Services – Salaries				\$162,306.04
200 <u>Personnel Services – Employee Benefits</u>				
220 Social Security Contributions				11,824.92
230 PSERS Retirement Contributions				51,168.60
299 All Other Employee Benefits				1,000.00
Total Personnel Services – Employee Benefits				\$63,993.52
300 <u>Purchased Professional and Technical Services</u>				
330 Other Professional Services				4,680.71
Total Purchased Professional and Technical Services				\$4,680.71
500 <u>Other Purchased Services</u>				
530 Communications				4,276.00
550 Printing and Binding				2,779.45
580 Travel				174.40
Total Other Purchased Services				\$7,229.85
600 <u>Supplies</u>				
610 General Supplies				1,218.62
630 Food				401.08
650 Supplies & Fees – Technology Related				95.88
Total Supplies				\$1,715.58
800 <u>Other Objects</u>				
810 Dues and Fees				824.40
Total Other Objects				\$824.40
Total 2370 Community Relations Services				\$240,750.10

LEA : 123465303 Methacton SD

Printed 10/23/2018 2:38:39 PM

General Fund (10)				
2380 Office of the Principal Services	<u>Elementary</u>	<u>Secondary</u>	<u>Federal</u>	<u>Total</u>
100 <u>Personnel Services – Salaries</u>				
100 Personnel Services – Salaries	1,348,566.19	1,261,609.48		2,610,175.67
Total Personnel Services – Salaries	\$1,348,566.19	\$1,261,609.48		\$2,610,175.67
200 <u>Personnel Services – Employee Benefits</u>				
210 Group Insurance – Contracted Provider	3,076.55	2,955.89		6,032.44
220 Social Security Contributions	95,013.13	91,951.07		186,964.20
230 PSERS Retirement Contributions	423,799.54	394,651.48		818,451.02
260 Workers' Compensation	14,207.78	13,650.61		27,858.39
270 Group Insurance – Self-Insurance	373,174.50	358,540.19		731,714.69
299 All Other Employee Benefits	5,000.00	5,639.83		10,639.83
Total Personnel Services – Employee Benefits	\$914,271.50	\$867,389.07		\$1,781,660.57
400 <u>Purchased Property Services</u>				
440 Rentals		5,495.54		5,495.54
Total Purchased Property Services		\$5,495.54		\$5,495.54
500 <u>Other Purchased Services</u>				
550 Printing and Binding	821.44	9,185.87		10,007.31
580 Travel	1,061.65	173.22		1,234.87
591 Services Purchased Locally	281.57	429.86		711.43
Total Other Purchased Services	\$2,164.66	\$9,788.95		\$11,953.61
600 <u>Supplies</u>				
610 General Supplies	1,668.69	2,431.52		4,100.21
630 Food		515.26		515.26
640 Books and Periodicals	454.87	912.23		1,367.10
Total Supplies	\$2,123.56	\$3,859.01		\$5,982.57
700 <u>Property</u>				
752 Capital Equipment – Original and Additional		3,230.16		3,230.16
Total Property		\$3,230.16		\$3,230.16
800 <u>Other Objects</u>				
810 Dues and Fees	3,774.00	5,189.80		8,963.80
Total Other Objects	\$3,774.00	\$5,189.80		\$8,963.80
Total 2380 Office of the Principal Services	\$2,270,899.91	\$2,156,562.01		\$4,427,461.92

LEA : 123465303 Methacton SD

Printed 10/23/2018 2:38:39 PM

General Fund (10)				
2390 Other Administration Services	<u>Elementary</u>	<u>Secondary</u>	<u>Federal</u>	<u>Total</u>
300 <u>Purchased Professional and Technical Services</u>				
330 Other Professional Services				21,138.00
Total Purchased Professional and Technical Services				\$21,138.00
700 <u>Property</u>				
762 Capitalized Equipment - Replacement				35,902.00
Total Property				\$35,902.00
Total 2390 Other Administration Services				\$57,040.00

LEA : 123465303 Methacton SD

Printed 10/23/2018 2:38:39 PM

General Fund (10)				
2400 Support Services – Pupil Health	<u>Elementary</u>	<u>Secondary</u>	<u>Federal</u>	<u>Total</u>
100 <u>Personnel Services – Salaries</u>				
100 Personnel Services – Salaries				753,652.56
Total Personnel Services – Salaries				\$753,652.56
200 <u>Personnel Services – Employee Benefits</u>				
210 Group Insurance – Contracted Provider				1,303.28
220 Social Security Contributions				54,687.62
230 PSERS Retirement Contributions				242,821.29
260 Workers' Compensation				5,934.10
270 Group Insurance – Self-Insurance				155,862.24
Total Personnel Services – Employee Benefits				\$460,608.53
300 <u>Purchased Professional and Technical Services</u>				
324 Professional Educational Services – Employee Training and Development Services				1,035.00
330 Other Professional Services				393,092.42
Total Purchased Professional and Technical Services				\$394,127.42
400 <u>Purchased Property Services</u>				
430 Repairs and Maintenance Services				829.98
Total Purchased Property Services				\$829.98
600 <u>Supplies</u>				
610 General Supplies				30,883.07
630 Food				20.47
640 Books and Periodicals				266.00
Total Supplies				\$31,169.54
Total 2400 Support Services – Pupil Health				\$1,640,388.03

LEA : 123465303 Methacton SD

Printed 10/23/2018 2:38:39 PM

General Fund (10)

2420 Medical Services	<u>Elementary</u>	<u>Secondary</u>	<u>Federal</u>	<u>Total</u>
100 <u>Personnel Services – Salaries</u>				
100 Personnel Services – Salaries				77,720.15
Total Personnel Services – Salaries				\$77,720.15
200 <u>Personnel Services – Employee Benefits</u>				
220 Social Security Contributions				5,449.90
230 PSERS Retirement Contributions				25,313.40
Total Personnel Services – Employee Benefits				\$30,763.30
300 <u>Purchased Professional and Technical Services</u>				
330 Other Professional Services				311,654.92
Total Purchased Professional and Technical Services				\$311,654.92
400 <u>Purchased Property Services</u>				
430 Repairs and Maintenance Services				829.98
Total Purchased Property Services				\$829.98
600 <u>Supplies</u>				
610 General Supplies				7,825.38
Total Supplies				\$7,825.38
Total 2420 Medical Services				\$428,793.73

LEA : 123465303 Methacton SD

Printed 10/23/2018 2:38:39 PM

General Fund (10)

2430 Dental Services	<u>Elementary</u>	<u>Secondary</u>	<u>Federal</u>	<u>Total</u>
300 <u>Purchased Professional and Technical Services</u>				
330 Other Professional Services				138.00
Total Purchased Professional and Technical Services				\$138.00
600 <u>Supplies</u>				
610 General Supplies				269.90
Total Supplies				\$269.90
Total 2430 Dental Services				\$407.90

LEA : 123465303 Methacton SD

Printed 10/23/2018 2:38:39 PM

General Fund (10)				
2440 Nursing Services	<u>Elementary</u>	<u>Secondary</u>	<u>Federal</u>	<u>Total</u>
100 <u>Personnel Services – Salaries</u>				
100 Personnel Services – Salaries				675,932.41
Total Personnel Services – Salaries				\$675,932.41
200 <u>Personnel Services – Employee Benefits</u>				
210 Group Insurance – Contracted Provider				1,303.28
220 Social Security Contributions				49,237.72
230 PSERS Retirement Contributions				217,507.89
260 Workers' Compensation				5,934.10
270 Group Insurance – Self-Insurance				155,862.24
Total Personnel Services – Employee Benefits				\$429,845.23
300 <u>Purchased Professional and Technical Services</u>				
324 Professional Educational Services – Employee Training and Development Services				1,035.00
330 Other Professional Services				81,299.50
Total Purchased Professional and Technical Services				\$82,334.50
600 <u>Supplies</u>				
610 General Supplies				17,672.16
630 Food				20.47
640 Books and Periodicals				266.00
Total Supplies				\$17,958.63
Total 2440 Nursing Services				\$1,206,070.77

LEA : 123465303 Methacton SD

Printed 10/23/2018 2:38:39 PM

General Fund (10)				
2490 Other Health Services	<u>Elementary</u>	<u>Secondary</u>	<u>Federal</u>	<u>Total</u>
600 <u>Supplies</u>				
610 General Supplies				5,115.63
Total Supplies				\$5,115.63
Total 2490 Other Health Services				\$5,115.63

LEA : 123465303 Methacton SD

Printed 10/23/2018 2:38:39 PM

General Fund (10)					
2500 Support Services – Business		Elementary	Secondary	Federal	Total
100 Personnel Services – Salaries					
100 Personnel Services – Salaries					450,112.47
Total Personnel Services – Salaries					\$450,112.47
200 Personnel Services – Employee Benefits					
210 Group Insurance – Contracted Provider					816.22
220 Social Security Contributions					33,193.90
230 PSERS Retirement Contributions					144,055.72
260 Workers' Compensation					5,345.50
270 Group Insurance – Self-Insurance					76,818.88
299 All Other Employee Benefits					1,867.44
Total Personnel Services – Employee Benefits					\$262,097.66
300 Purchased Professional and Technical Services					
330 Other Professional Services					27,435.43
Total Purchased Professional and Technical Services					\$27,435.43
400 Purchased Property Services					
440 Rentals					4,497.00
Total Purchased Property Services					\$4,497.00
500 Other Purchased Services					
520 Insurance – General					211,390.75
530 Communications					23,850.62
549 Other Advertising/Public Relations					3,285.62
580 Travel					1,310.07
Total Other Purchased Services					\$239,837.06
600 Supplies					
610 General Supplies					2,645.77
630 Food					(814.80)
Total Supplies					\$1,830.97
800 Other Objects					
810 Dues and Fees					18,364.35
Total Other Objects					\$18,364.35
Total 2500 Support Services – Business					\$1,004,174.94

LEA : 123465303 Methacton SD

Printed 10/23/2018 2:38:39 PM

General Fund (10)				
2510 Fiscal Services				
	<u>Elementary</u>	<u>Secondary</u>	<u>Federal</u>	<u>Total</u>
100 <u>Personnel Services – Salaries</u>				
100 Personnel Services – Salaries				450,112.47
Total Personnel Services – Salaries				\$450,112.47
200 <u>Personnel Services – Employee Benefits</u>				
210 Group Insurance – Contracted Provider				816.22
220 Social Security Contributions				33,193.90
230 PSERS Retirement Contributions				144,055.72
260 Workers' Compensation				5,345.50
270 Group Insurance – Self-Insurance				76,818.88
299 All Other Employee Benefits				1,867.44
Total Personnel Services – Employee Benefits				\$262,097.66
300 <u>Purchased Professional and Technical Services</u>				
330 Other Professional Services				27,435.43
Total Purchased Professional and Technical Services				\$27,435.43
500 <u>Other Purchased Services</u>				
530 Communications				105.09
549 Other Advertising/Public Relations				3,285.62
580 Travel				1,310.07
Total Other Purchased Services				\$4,700.78
600 <u>Supplies</u>				
610 General Supplies				2,645.77
630 Food				(814.80)
Total Supplies				\$1,830.97
800 <u>Other Objects</u>				
810 Dues and Fees				18,364.35
Total Other Objects				\$18,364.35
Total 2510 Fiscal Services				\$764,541.66

LEA : 123465303 Methacton SD

Printed 10/23/2018 2:38:39 PM

General Fund (10)				
2511 Supervision of Fiscal Services - Head of Component	<u>Elementary</u>	<u>Secondary</u>	<u>Federal</u>	<u>Total</u>
100 <u>Personnel Services – Salaries</u>				
100 Personnel Services – Salaries				146,269.22
Total Personnel Services – Salaries				\$146,269.22
200 <u>Personnel Services – Employee Benefits</u>				
210 Group Insurance – Contracted Provider				246.60
220 Social Security Contributions				11,178.79
230 PSERS Retirement Contributions				45,833.06
260 Workers' Compensation				763.66
299 All Other Employee Benefits				1,000.00
Total Personnel Services – Employee Benefits				\$59,022.11
300 <u>Purchased Professional and Technical Services</u>				
330 Other Professional Services				11,860.00
Total Purchased Professional and Technical Services				\$11,860.00
500 <u>Other Purchased Services</u>				
530 Communications				65.29
549 Other Advertising/Public Relations				3,285.62
580 Travel				1,294.74
Total Other Purchased Services				\$4,645.65
800 <u>Other Objects</u>				
810 Dues and Fees				1,647.06
Total Other Objects				\$1,647.06
Total 2511 Supervision of Fiscal Services - Head of Component				\$223,444.04

LEA : 123465303 Methacton SD

Printed 10/23/2018 2:38:39 PM

General Fund (10)				
2513 Receiving and Disbursing Funds Services	<u>Elementary</u>	<u>Secondary</u>	<u>Federal</u>	<u>Total</u>
100 <u>Personnel Services – Salaries</u>				
100 Personnel Services – Salaries				53,564.30
Total Personnel Services – Salaries				\$53,564.30
200 <u>Personnel Services – Employee Benefits</u>				
210 Group Insurance – Contracted Provider				74.02
220 Social Security Contributions				3,867.48
230 PSERS Retirement Contributions				16,776.21
260 Workers' Compensation				1,527.28
270 Group Insurance – Self-Insurance				17,347.00
Total Personnel Services – Employee Benefits				\$39,591.99
500 <u>Other Purchased Services</u>				
530 Communications				39.80
580 Travel				15.33
Total Other Purchased Services				\$55.13
Total 2513 Receiving and Disbursing Funds Services				\$93,211.42

LEA : 123465303 Methacton SD

Printed 10/23/2018 2:38:39 PM

General Fund (10)

2514 Payroll Services

	<u>Elementary</u>	<u>Secondary</u>	<u>Federal</u>	<u>Total</u>
100 <u>Personnel Services – Salaries</u>				
100 Personnel Services – Salaries				46,468.50
Total Personnel Services – Salaries				\$46,468.50
200 <u>Personnel Services – Employee Benefits</u>				
210 Group Insurance – Contracted Provider				26.94
220 Social Security Contributions				3,434.84
230 PSERS Retirement Contributions				15,134.78
260 Workers' Compensation				763.64
270 Group Insurance – Self-Insurance				7,430.88
Total Personnel Services – Employee Benefits				\$26,791.08
Total 2514 Payroll Services				\$73,259.58

LEA : 123465303 Methacton SD

Printed 10/23/2018 2:38:39 PM

General Fund (10)				
2515 Financial Accounting Services	<u>Elementary</u>	<u>Secondary</u>	<u>Federal</u>	<u>Total</u>
100 <u>Personnel Services – Salaries</u>				
100 Personnel Services – Salaries				112,493.36
Total Personnel Services – Salaries				\$112,493.36
200 <u>Personnel Services – Employee Benefits</u>				
210 Group Insurance – Contracted Provider				320.62
220 Social Security Contributions				8,329.48
230 PSERS Retirement Contributions				36,639.14
260 Workers' Compensation				763.64
270 Group Insurance – Self-Insurance				17,347.00
299 All Other Employee Benefits				867.44
Total Personnel Services – Employee Benefits				\$64,267.32
800 <u>Other Objects</u>				
810 Dues and Fees				12,001.80
Total Other Objects				\$12,001.80
Total 2515 Financial Accounting Services				\$188,762.48

LEA : 123465303 Methacton SD

Printed 10/23/2018 2:38:39 PM

General Fund (10)				
2519 Other Fiscal Services	<u>Elementary</u>	<u>Secondary</u>	<u>Federal</u>	<u>Total</u>
100 <u>Personnel Services – Salaries</u>				
100 Personnel Services – Salaries				91,317.09
Total Personnel Services – Salaries				\$91,317.09
200 <u>Personnel Services – Employee Benefits</u>				
210 Group Insurance – Contracted Provider				148.04
220 Social Security Contributions				6,383.31
230 PSERS Retirement Contributions				29,672.53
260 Workers' Compensation				1,527.28
270 Group Insurance – Self-Insurance				34,694.00
Total Personnel Services – Employee Benefits				\$72,425.16
300 <u>Purchased Professional and Technical Services</u>				
330 Other Professional Services				15,575.43
Total Purchased Professional and Technical Services				\$15,575.43
600 <u>Supplies</u>				
610 General Supplies				2,645.77
630 Food				(814.80)
Total Supplies				\$1,830.97
800 <u>Other Objects</u>				
810 Dues and Fees				4,715.49
Total Other Objects				\$4,715.49
Total 2519 Other Fiscal Services				\$185,864.14

LEA : 123465303 Methacton SD

Printed 10/23/2018 2:38:39 PM

General Fund (10)				
2590 Other Support Services – Business	<u>Elementary</u>	<u>Secondary</u>	<u>Federal</u>	<u>Total</u>
400 <u>Purchased Property Services</u>				
440 Rentals				4,497.00
Total Purchased Property Services				\$4,497.00
500 <u>Other Purchased Services</u>				
520 Insurance – General				211,390.75
530 Communications				23,745.53
Total Other Purchased Services				\$235,136.28
Total 2590 Other Support Services – Business				\$239,633.28

LEA : 123465303 Methacton SD

Printed 10/23/2018 2:38:39 PM

General Fund (10)				
2600 Operation and Maintenance of Plant Services	<u>Elementary</u>	<u>Secondary</u>	<u>Federal</u>	<u>Total</u>
100 <u>Personnel Services – Salaries</u>				
100 Personnel Services – Salaries				3,186,141.07
Total Personnel Services – Salaries				\$3,186,141.07
200 <u>Personnel Services – Employee Benefits</u>				
210 Group Insurance – Contracted Provider				6,729.24
220 Social Security Contributions				236,114.94
230 PSERS Retirement Contributions				1,027,729.92
260 Workers' Compensation				30,147.94
270 Group Insurance – Self-Insurance				787,960.85
299 All Other Employee Benefits				3,117.00
Total Personnel Services – Employee Benefits				\$2,091,799.89
300 <u>Purchased Professional and Technical Services</u>				
330 Other Professional Services				9,665.00
390 Other Purchased Professional and Technical Services				157,620.87
Total Purchased Professional and Technical Services				\$167,285.87
400 <u>Purchased Property Services</u>				
410 Cleaning Services				104,186.47
420 Utility Services				239,077.67
430 Repairs and Maintenance Services				826,429.88
440 Rentals				46,502.45
450 Construction Services				(1,861.96)
460 Extermination Services				9,073.50
490 Other Purchased Property Services				289.00
Total Purchased Property Services				\$1,223,697.01
500 <u>Other Purchased Services</u>				
530 Communications				68,340.91
580 Travel				1,468.76
Total Other Purchased Services				\$69,809.67
600 <u>Supplies</u>				
610 General Supplies	149,347.42	174,291.00		323,638.42
620 Energy				1,149,226.79
650 Supplies & Fees – Technology Related				7,000.87
Total Supplies				\$1,479,866.08
700 <u>Property</u>				
752 Capital Equipment – Original and Additional				34,173.00
762 Capitalized Equipment - Replacement				190,696.84
Total Property				\$224,869.84
800 <u>Other Objects</u>				
810 Dues and Fees				6,841.50
Total Other Objects				\$6,841.50
Total 2600 Operation and Maintenance of Plant Services	\$149,347.42	\$174,291.00		\$8,450,310.93

LEA : 123465303 Methacton SD

Printed 10/23/2018 2:38:39 PM

General Fund (10)

2610 Supervision of Operation and Maintenance of Plant Services	<u>Elementary</u>	<u>Secondary</u>	<u>Federal</u>	<u>Total</u>
100 <u>Personnel Services – Salaries</u>				
100 Personnel Services – Salaries				278,998.63
Total Personnel Services – Salaries				\$278,998.63
200 <u>Personnel Services – Employee Benefits</u>				
210 Group Insurance – Contracted Provider				715.26
220 Social Security Contributions				20,492.08
230 PSERS Retirement Contributions				88,738.29
260 Workers' Compensation				2,290.92
270 Group Insurance – Self-Insurance				56,517.78
299 All Other Employee Benefits				1,798.61
Total Personnel Services – Employee Benefits				\$170,552.94
800 <u>Other Objects</u>				
810 Dues and Fees				250.00
Total Other Objects				\$250.00
Total 2610 Supervision of Operation and Maintenance of Plant Services				\$449,801.57

LEA : 123465303 Methacton SD

Printed 10/23/2018 2:38:39 PM

General Fund (10)				
2611 Supervision of Operation and Maintenance of Plant Services – Head of Component	<u>Elementary</u>	<u>Secondary</u>	<u>Federal</u>	<u>Total</u>
100 <u>Personnel Services – Salaries</u>				
100 Personnel Services – Salaries				184,178.91
Total Personnel Services – Salaries				\$184,178.91
200 <u>Personnel Services – Employee Benefits</u>				
210 Group Insurance – Contracted Provider				394.64
220 Social Security Contributions				13,434.37
230 PSERS Retirement Contributions				57,855.34
260 Workers' Compensation				1,527.28
270 Group Insurance – Self-Insurance				39,231.96
299 All Other Employee Benefits				798.61
Total Personnel Services – Employee Benefits				\$113,242.20
800 <u>Other Objects</u>				
810 Dues and Fees				250.00
Total Other Objects				\$250.00
Total 2611 Supervision of Operation and Maintenance of Plant Services – Head of Component				\$297,671.11

LEA : 123465303 Methacton SD

Printed 10/23/2018 2:38:39 PM

General Fund (10)

2619 Supervision of Operation and Maintenance of Plant Services – All Other Supervision	<u>Elementary</u>	<u>Secondary</u>	<u>Federal</u>	<u>Total</u>
100 <u>Personnel Services – Salaries</u>				
100 Personnel Services – Salaries				94,819.72
Total Personnel Services – Salaries				\$94,819.72
200 <u>Personnel Services – Employee Benefits</u>				
210 Group Insurance – Contracted Provider				320.62
220 Social Security Contributions				7,057.71
230 PSERS Retirement Contributions				30,882.95
260 Workers' Compensation				763.64
270 Group Insurance – Self-Insurance				17,285.82
299 All Other Employee Benefits				1,000.00
Total Personnel Services – Employee Benefits				\$57,310.74
Total 2619 Supervision of Operation and Maintenance of Plant Services – All Other Supervision				\$152,130.46

LEA : 123465303 Methacton SD

Printed 10/23/2018 2:38:39 PM

General Fund (10)				
2620 Operation of Buildings Services	<u>Elementary</u>	<u>Secondary</u>	<u>Federal</u>	<u>Total</u>
100 <u>Personnel Services – Salaries</u>				
100 Personnel Services – Salaries				2,636,172.23
Total Personnel Services – Salaries				\$2,636,172.23
200 <u>Personnel Services – Employee Benefits</u>				
210 Group Insurance – Contracted Provider				6,013.98
220 Social Security Contributions				195,581.64
230 PSERS Retirement Contributions				851,159.81
260 Workers' Compensation				27,857.02
270 Group Insurance – Self-Insurance				731,443.07
299 All Other Employee Benefits				1,318.39
Total Personnel Services – Employee Benefits				\$1,813,373.91
300 <u>Purchased Professional and Technical Services</u>				
330 Other Professional Services				7,865.00
390 Other Purchased Professional and Technical Services				24,323.00
Total Purchased Professional and Technical Services				\$32,188.00
400 <u>Purchased Property Services</u>				
410 Cleaning Services				75,083.93
420 Utility Services				239,077.67
430 Repairs and Maintenance Services				691,821.14
440 Rentals				426.96
450 Construction Services				(1,861.96)
460 Extermination Services				1,629.50
490 Other Purchased Property Services				260.00
Total Purchased Property Services				\$1,006,437.24
500 <u>Other Purchased Services</u>				
530 Communications				68,340.91
Total Other Purchased Services				\$68,340.91
600 <u>Supplies</u>				
610 General Supplies	105,452.61	133,823.01		239,275.62
620 Energy				1,149,176.81
650 Supplies & Fees – Technology Related				7,000.87
Total Supplies	\$105,452.61	\$133,823.01		\$1,395,453.30
700 <u>Property</u>				
752 Capital Equipment – Original and Additional				12,423.00
762 Capitalized Equipment - Replacement				76,870.84
Total Property				\$89,293.84
800 <u>Other Objects</u>				
810 Dues and Fees				115.00
Total Other Objects				\$115.00
Total 2620 Operation of Buildings Services	\$105,452.61	\$133,823.01		\$7,041,374.43

LEA : 123465303 Methacton SD

Printed 10/23/2018 2:38:39 PM

General Fund (10)				
2630 Care and Upkeep of Grounds Services	<u>Elementary</u>	<u>Secondary</u>	<u>Federal</u>	<u>Total</u>
100 <u>Personnel Services – Salaries</u>				
100 Personnel Services – Salaries				270,970.21
Total Personnel Services – Salaries				\$270,970.21
200 <u>Personnel Services – Employee Benefits</u>				
220 Social Security Contributions				20,041.22
230 PSERS Retirement Contributions				87,831.82
Total Personnel Services – Employee Benefits				\$107,873.04
400 <u>Purchased Property Services</u>				
410 Cleaning Services				17,435.00
430 Repairs and Maintenance Services				55,856.36
Total Purchased Property Services				\$73,291.36
600 <u>Supplies</u>				
610 General Supplies	31,058.66	28,923.02		59,981.68
Total Supplies	\$31,058.66	\$28,923.02		\$59,981.68
700 <u>Property</u>				
752 Capital Equipment – Original and Additional				21,750.00
Total Property				\$21,750.00
Total 2630 Care and Upkeep of Grounds Services	\$31,058.66	\$28,923.02		\$533,866.29

LEA : 123465303 Methacton SD

Printed 10/23/2018 2:38:39 PM

General Fund (10)				
2640 Care and Upkeep of Equipment Services	<u>Elementary</u>	<u>Secondary</u>	<u>Federal</u>	<u>Total</u>
400 <u>Purchased Property Services</u>				
430 Repairs and Maintenance Services				46,779.39
440 Rentals				28,653.00
Total Purchased Property Services				\$75,432.39
600 <u>Supplies</u>				
610 General Supplies	7,063.78	6,567.70		13,631.48
Total Supplies	\$7,063.78	\$6,567.70		\$13,631.48
700 <u>Property</u>				
762 Capitalized Equipment - Replacement				23,598.00
Total Property				\$23,598.00
Total 2640 Care and Upkeep of Equipment Services	\$7,063.78	\$6,567.70		\$112,661.87

LEA : 123465303 Methacton SD

Printed 10/23/2018 2:38:39 PM

General Fund (10)				
2650 Vehicle Operation and Maintenance Services (Other Than Student Transportation Vehicles)	<u>Elementary</u>	<u>Secondary</u>	<u>Federal</u>	<u>Total</u>
400 <u>Purchased Property Services</u>				
430 Repairs and Maintenance Services				31,597.99
Total Purchased Property Services				\$31,597.99
600 <u>Supplies</u>				
610 General Supplies	3,106.25	2,984.44		6,090.69
Total Supplies	\$3,106.25	\$2,984.44		\$6,090.69
700 <u>Property</u>				
762 Capitalized Equipment - Replacement				90,228.00
Total Property				\$90,228.00
Total 2650 Vehicle Operation and Maintenance Services (Other Than Student Transportation Vehicles)	\$3,106.25	\$2,984.44		\$127,916.68

LEA : 123465303 Methacton SD

Printed 10/23/2018 2:38:39 PM

General Fund (10)

2690 Other Operation and Maintenance of Plant Services	<u>Elementary</u>	<u>Secondary</u>	<u>Federal</u>	<u>Total</u>
300 <u>Purchased Professional and Technical Services</u>				
330 Other Professional Services				1,800.00
390 Other Purchased Professional and Technical Services				133,297.87
Total Purchased Professional and Technical Services				\$135,097.87
400 <u>Purchased Property Services</u>				
410 Cleaning Services				11,667.54
430 Repairs and Maintenance Services				375.00
440 Rentals				17,422.49
460 Extermination Services				7,444.00
490 Other Purchased Property Services				29.00
Total Purchased Property Services				\$36,938.03
500 <u>Other Purchased Services</u>				
580 Travel				1,468.76
Total Other Purchased Services				\$1,468.76
600 <u>Supplies</u>				
610 General Supplies	2,666.12	1,992.83		4,658.95
620 Energy				49.98
Total Supplies	\$2,666.12	\$1,992.83		\$4,708.93
800 <u>Other Objects</u>				
810 Dues and Fees				6,476.50
Total Other Objects				\$6,476.50
Total 2690 Other Operation and Maintenance of Plant Services	\$2,666.12	\$1,992.83		\$184,690.09

LEA : 123465303 Methacton SD

Printed 10/23/2018 2:38:39 PM

General Fund (10)				
2700 Student Transportation Services	<u>Elementary</u>	<u>Secondary</u>	<u>Federal</u>	<u>Total</u>
100 <u>Personnel Services – Salaries</u>				
100 Personnel Services – Salaries				174,104.77
Total Personnel Services – Salaries				\$174,104.77
200 <u>Personnel Services – Employee Benefits</u>				
210 Group Insurance – Contracted Provider				313.20
220 Social Security Contributions				12,654.45
230 PSERS Retirement Contributions				56,258.61
260 Workers' Compensation				1,426.04
270 Group Insurance – Self-Insurance				37,455.65
Total Personnel Services – Employee Benefits				\$108,107.95
300 <u>Purchased Professional and Technical Services</u>				
330 Other Professional Services				9,950.00
Total Purchased Professional and Technical Services				\$9,950.00
500 <u>Other Purchased Services</u>				
511 Student Transportation Services from Another LEA Within the State				3,971.00
513 Contracted Carriers			7,153.52	6,300,399.60
516 Student Transportation Services From the IU				474,316.72
519 Student Transportation Services From Other Sources				3,600.00
Total Other Purchased Services			\$7,153.52	\$6,782,287.32
600 <u>Supplies</u>				
610 General Supplies				267.00
620 Energy				91,774.80
Total Supplies				\$92,041.80
700 <u>Property</u>				
752 Capital Equipment – Original and Additional				34,666.36
Total Property				\$34,666.36
Total 2700 Student Transportation Services			\$7,153.52	\$7,201,158.20

LEA : 123465303 Methacton SD

Printed 10/23/2018 2:38:39 PM

General Fund (10)				
2720 Vehicle Operation Services				
	<u>Elementary</u>	<u>Secondary</u>	<u>Federal</u>	<u>Total</u>
100 <u>Personnel Services – Salaries</u>				
100 Personnel Services – Salaries				152,654.29
Total Personnel Services – Salaries				\$152,654.29
200 <u>Personnel Services – Employee Benefits</u>				
210 Group Insurance – Contracted Provider				274.61
220 Social Security Contributions				11,095.37
230 PSERS Retirement Contributions				49,327.30
260 Workers' Compensation				1,250.35
270 Group Insurance – Self-Insurance				32,840.95
Total Personnel Services – Employee Benefits				\$94,788.58
500 <u>Other Purchased Services</u>				
511 Student Transportation Services from Another LEA Within the State				3,481.76
513 Contracted Carriers			7,153.52	5,349,213.70
516 Student Transportation Services From the IU				415,878.80
Total Other Purchased Services			\$7,153.52	\$5,768,574.26
600 <u>Supplies</u>				
610 General Supplies				234.10
620 Energy				80,467.74
Total Supplies				\$80,701.84
700 <u>Property</u>				
752 Capital Equipment – Original and Additional				30,395.31
Total Property				\$30,395.31
Total 2720 Vehicle Operation Services			\$7,153.52	\$6,127,114.28

LEA : 123465303 Methacton SD

Printed 10/23/2018 2:38:39 PM

General Fund (10)

2740 Vehicle Servicing and Maintenance Services	<u>Elementary</u>	<u>Secondary</u>	<u>Federal</u>	<u>Total</u>
500 <u>Other Purchased Services</u>				
513 Contracted Carriers				175,830.17
Total Other Purchased Services				\$175,830.17
Total 2740 Vehicle Servicing and Maintenance Services				\$175,830.17

LEA : 123465303 Methacton SD

Printed 10/23/2018 2:38:39 PM

General Fund (10)				
2750 Nonpublic Transportation				
	<u>Elementary</u>	<u>Secondary</u>	<u>Federal</u>	<u>Total</u>
100 <u>Personnel Services – Salaries</u>				
100 Personnel Services – Salaries				21,450.48
Total Personnel Services – Salaries				\$21,450.48
200 <u>Personnel Services – Employee Benefits</u>				
210 Group Insurance – Contracted Provider				38.59
220 Social Security Contributions				1,559.08
230 PSERS Retirement Contributions				6,931.31
260 Workers' Compensation				175.69
270 Group Insurance – Self-Insurance				4,614.70
Total Personnel Services – Employee Benefits				\$13,319.37
300 <u>Purchased Professional and Technical Services</u>				
330 Other Professional Services				1,225.88
Total Purchased Professional and Technical Services				\$1,225.88
500 <u>Other Purchased Services</u>				
511 Student Transportation Services from Another LEA Within the State				489.24
513 Contracted Carriers				775,355.73
516 Student Transportation Services From the IU				58,437.92
519 Student Transportation Services From Other Sources				443.54
Total Other Purchased Services				\$834,726.43
600 <u>Supplies</u>				
610 General Supplies				32.90
620 Energy				11,307.06
Total Supplies				\$11,339.96
700 <u>Property</u>				
752 Capital Equipment – Original and Additional				4,271.05
Total Property				\$4,271.05
Total 2750 Nonpublic Transportation				\$886,333.17

LEA : 123465303 Methacton SD

Printed 10/23/2018 2:38:39 PM

General Fund (10)

2790 Other Student Transportation Services	<u>Elementary</u>	<u>Secondary</u>	<u>Federal</u>	<u>Total</u>
300 <u>Purchased Professional and Technical Services</u>				
330 Other Professional Services				8,724.12
Total Purchased Professional and Technical Services				\$8,724.12
500 <u>Other Purchased Services</u>				
519 Student Transportation Services From Other Sources				3,156.46
Total Other Purchased Services				\$3,156.46
Total 2790 Other Student Transportation Services				\$11,880.58

LEA : 123465303 Methacton SD

Printed 10/23/2018 2:38:39 PM

General Fund (10)				
2800 Support Services – Central	Elementary	Secondary	Federal	Total
100 Personnel Services – Salaries				
100 Personnel Services – Salaries				607,140.75
Total Personnel Services – Salaries				\$607,140.75
200 Personnel Services – Employee Benefits				
210 Group Insurance – Contracted Provider				1,346.23
220 Social Security Contributions				44,205.38
230 PSERS Retirement Contributions				193,614.07
240 Tuition Reimbursement				24,294.00
260 Workers' Compensation				6,129.64
270 Group Insurance – Self-Insurance				160,998.19
299 All Other Employee Benefits				1,000.00
Total Personnel Services – Employee Benefits				\$431,587.51
300 Purchased Professional and Technical Services				
330 Other Professional Services				5,000.00
Total Purchased Professional and Technical Services				\$5,000.00
400 Purchased Property Services				
430 Repairs and Maintenance Services				81,641.56
440 Rentals				206,118.98
Total Purchased Property Services				\$287,760.54
500 Other Purchased Services				
530 Communications				36,834.48
580 Travel			628.34	4,395.51
Total Other Purchased Services			\$628.34	\$41,229.99
600 Supplies				
610 General Supplies				335,664.65
650 Supplies & Fees – Technology Related				3,219.00
Total Supplies				\$338,883.65
700 Property				
762 Capitalized Equipment - Replacement				37,638.00
Total Property				\$37,638.00
Total 2800 Support Services – Central			\$628.34	\$1,749,240.44

LEA : 123465303 Methacton SD

Printed 10/23/2018 2:38:39 PM

General Fund (10)				
2810 Planning, Research, Development and Evaluation Services	<u>Elementary</u>	<u>Secondary</u>	<u>Federal</u>	<u>Total</u>
100 <u>Personnel Services – Salaries</u>				
100 Personnel Services – Salaries				607,140.75
Total Personnel Services – Salaries				\$607,140.75
200 <u>Personnel Services – Employee Benefits</u>				
210 Group Insurance – Contracted Provider				1,346.23
220 Social Security Contributions				44,205.38
230 PSERS Retirement Contributions				193,614.07
260 Workers' Compensation				6,129.64
270 Group Insurance – Self-Insurance				160,998.19
299 All Other Employee Benefits				1,000.00
Total Personnel Services – Employee Benefits				\$407,293.51
300 <u>Purchased Professional and Technical Services</u>				
330 Other Professional Services				5,000.00
Total Purchased Professional and Technical Services				\$5,000.00
400 <u>Purchased Property Services</u>				
430 Repairs and Maintenance Services				81,641.56
440 Rentals				3,261.46
Total Purchased Property Services				\$84,903.02
500 <u>Other Purchased Services</u>				
580 Travel				3,767.17
Total Other Purchased Services				\$3,767.17
600 <u>Supplies</u>				
610 General Supplies				335,664.65
650 Supplies & Fees – Technology Related				3,219.00
Total Supplies				\$338,883.65
700 <u>Property</u>				
762 Capitalized Equipment - Replacement				37,638.00
Total Property				\$37,638.00
Total 2810 Planning, Research, Development and Evaluation Services				\$1,484,626.10

LEA : 123465303 Methacton SD

Printed 10/23/2018 2:38:39 PM

General Fund (10)				
2830 Staff Services	<u>Elementary</u>	<u>Secondary</u>	<u>Federal</u>	<u>Total</u>
200 <u>Personnel Services – Employee Benefits</u>				
240 Tuition Reimbursement				24,294.00
Total Personnel Services – Employee Benefits				\$24,294.00
Total 2830 Staff Services				\$24,294.00

LEA : 123465303 Methacton SD

Printed 10/23/2018 2:38:39 PM

General Fund (10)

2834 Staff Development Services – Non-Instructional, Certified Staff Only	<u>Elementary</u>	<u>Secondary</u>	<u>Federal</u>	<u>Total</u>
200 <u>Personnel Services – Employee Benefits</u>				
240 Tuition Reimbursement				24,294.00
Total Personnel Services – Employee Benefits				\$24,294.00
Total 2834 Staff Development Services – Non-Instructional, Certified Staff Only				\$24,294.00

LEA : 123465303 Methacton SD

Printed 10/23/2018 2:38:39 PM

General Fund (10)				
2840 Data Processing Services	<u>Elementary</u>	<u>Secondary</u>	<u>Federal</u>	<u>Total</u>
400 <u>Purchased Property Services</u>				
440 Rentals				202,857.52
Total Purchased Property Services				\$202,857.52
Total 2840 Data Processing Services				\$202,857.52

LEA : 123465303 Methacton SD

Printed 10/23/2018 2:38:39 PM

General Fund (10)

2850 State and Federal Agency Liaison Services	<u>Elementary</u>	<u>Secondary</u>	<u>Federal</u>	<u>Total</u>
500 <u>Other Purchased Services</u>				
580 Travel			628.34	628.34
Total Other Purchased Services			\$628.34	\$628.34
Total 2850 State and Federal Agency Liaison Services			\$628.34	\$628.34

LEA : 123465303 Methacton SD

Printed 10/23/2018 2:38:39 PM

General Fund (10)

2890 Other Support Services Central	<u>Elementary</u>	<u>Secondary</u>	<u>Federal</u>	<u>Total</u>
500 <u>Other Purchased Services</u>				
530 Communications				36,834.48
Total Other Purchased Services				\$36,834.48
Total 2890 Other Support Services Central				\$36,834.48

LEA : 123465303 Methacton SD

Printed 10/23/2018 2:38:39 PM

General Fund (10)

2900 Other Support Services

Elementary Secondary Federal Total

500 Other Purchased Services

595 IU Payments By Withholding 69,059.56

596 Direct Payments To Intermediate Units 5,210.00

Total Other Purchased Services				\$74,269.56
Total 2900 Other Support Services				\$74,269.56

LEA : 123465303 Methacton SD

Printed 10/23/2018 2:38:39 PM

General Fund (10)

2910 Support Services Not Listed Elsewhere In the 2000 Series

Elementary Secondary Federal Total

500 <u>Other Purchased Services</u>				
595 IU Payments By Withholding				69,059.56
596 Direct Payments To Intermediate Units				5,210.00
Total Other Purchased Services				\$74,269.56
Total 2910 Support Services Not Listed Elsewhere In the 2000 Series				\$74,269.56

LEA : 123465303 Methacton SD

Printed 10/23/2018 2:38:44 PM

General Fund (10)	
3000 Operation of Non-Instructional Services	<u>Total</u>
100 <u>Personnel Services – Salaries</u>	
100 Personnel Services – Salaries	819,968.84
Total Personnel Services – Salaries	\$819,968.84
200 <u>Personnel Services – Employee Benefits</u>	
220 Social Security Contributions	62,500.39
230 PSERS Retirement Contributions	234,145.92
Total Personnel Services – Employee Benefits	\$296,646.31
300 <u>Purchased Professional and Technical Services</u>	
329 Professional Educational Services – Other	777.98
330 Other Professional Services	78,318.83
340 Technical Services	3,000.00
Total Purchased Professional and Technical Services	\$82,096.81
400 <u>Purchased Property Services</u>	
410 Cleaning Services	11,832.16
430 Repairs and Maintenance Services	6,059.17
440 Rentals	212.00
Total Purchased Property Services	\$18,103.33
500 <u>Other Purchased Services</u>	
510 Student Transportation Services	2,328.52
520 Insurance – General	5,898.00
580 Travel	14,638.64
591 Services Purchased Locally	48,100.00
592 Services Purchased From Another LEA Within the State	(174.00)
593 Services Purchased From Another LEA Outside the State	4,142.92
599 Other Miscellaneous Purchased Services	965.00
Total Other Purchased Services	\$75,899.08
600 <u>Supplies</u>	
610 General Supplies	106,837.71
630 Food	550.48
650 Supplies & Fees – Technology Related	3,813.00
Total Supplies	\$111,201.19
700 <u>Property</u>	
762 Capitalized Equipment - Replacement	13,621.54
Total Property	\$13,621.54
800 <u>Other Objects</u>	
810 Dues and Fees	39,238.12
890 Miscellaneous Expenditures	4,346.32
Total Other Objects	\$43,584.44
Total 3000 Operation of Non-Instructional Services	\$1,461,121.54

LEA : 123465303 Methacton SD

Printed 10/23/2018 2:38:44 PM

General Fund (10)				
3200 Student Activities				
	<u>Elementary</u>	<u>Secondary</u>	<u>Federal</u>	<u>Total</u>
100 <u>Personnel Services – Salaries</u>				
100 Personnel Services – Salaries				819,968.84
Total Personnel Services – Salaries				\$819,968.84
200 <u>Personnel Services – Employee Benefits</u>				
220 Social Security Contributions				62,500.39
230 PSERS Retirement Contributions				234,145.92
Total Personnel Services – Employee Benefits				\$296,646.31
300 <u>Purchased Professional and Technical Services</u>				
329 Professional Educational Services – Other				777.98
330 Other Professional Services				78,318.83
340 Technical Services				3,000.00
Total Purchased Professional and Technical Services				\$82,096.81
400 <u>Purchased Property Services</u>				
410 Cleaning Services				11,832.16
430 Repairs and Maintenance Services				6,059.17
440 Rentals				212.00
Total Purchased Property Services				\$18,103.33
500 <u>Other Purchased Services</u>				
510 Student Transportation Services				2,328.52
520 Insurance – General				5,898.00
580 Travel				13,620.64
591 Services Purchased Locally				48,100.00
592 Services Purchased From Another LEA Within the State				(174.00)
593 Services Purchased From Another LEA Outside the State				4,142.92
599 Other Miscellaneous Purchased Services				965.00
Total Other Purchased Services				\$74,881.08
600 <u>Supplies</u>				
610 General Supplies				105,202.94
630 Food				94.48
650 Supplies & Fees – Technology Related				3,813.00
Total Supplies				\$109,110.42
700 <u>Property</u>				
762 Capitalized Equipment - Replacement				13,621.54
Total Property				\$13,621.54
800 <u>Other Objects</u>				
810 Dues and Fees				39,238.12
890 Miscellaneous Expenditures				4,346.32
Total Other Objects				\$43,584.44
Total 3200 Student Activities				\$1,458,012.77

Page 122

LEA : 123465303 Methacton SD

Printed 10/23/2018 2:38:47 PM

General Fund (10)

5000 Other Expenditures and Financing Uses		<u>Total</u>
800 <u>Other Objects</u>		
830 Interest		2,321,590.73
880 Refunds of Prior Years' Receipts		57,102.00
Total Other Objects		\$2,378,692.73
900 <u>Other Uses of Funds</u>		
910 Redemption of Principal		7,316,388.19
939 Other Fund Transfers		200,000.00
Total Other Uses of Funds		\$7,516,388.19
Total 5000 Other Expenditures and Financing Uses		\$9,895,080.92

LEA : 123465303 Methacton SD

Printed 10/23/2018 2:38:47 PM

General Fund (10)

5100 Debt Service / Other Expenditures and Financing Uses	<u>Elementary</u>	<u>Secondary</u>	<u>Federal</u>	<u>Total</u>
800 <u>Other Objects</u>				
830 Interest				2,321,590.73
880 Refunds of Prior Years' Receipts				57,102.00
Total Other Objects				\$2,378,692.73
900 <u>Other Uses of Funds</u>				
910 Redemption of Principal				7,316,388.19
Total Other Uses of Funds				\$7,316,388.19
Total 5100 Debt Service / Other Expenditures and Financing Uses				\$9,695,080.92

LEA : 123465303 Methacton SD

Printed 10/23/2018 2:38:47 PM

General Fund (10)				
5110 Debt Service	<u>Elementary</u>	<u>Secondary</u>	<u>Federal</u>	<u>Total</u>
800 <u>Other Objects</u>				
830 Interest				2,321,590.73
Total Other Objects				\$2,321,590.73
900 <u>Other Uses of Funds</u>				
910 Redemption of Principal				7,316,388.19
Total Other Uses of Funds				\$7,316,388.19
Total 5110 Debt Service				\$9,637,978.92

LEA : 123465303 Methacton SD

Printed 10/23/2018 2:38:47 PM

General Fund (10)

5130 Refund of Prior Year Revenues / Receipts	<u>Elementary</u>	<u>Secondary</u>	<u>Federal</u>	<u>Total</u>
800 <u>Other Objects</u>				
880 Refunds of Prior Years' Receipts				57,102.00
Total Other Objects				\$57,102.00
Total 5130 Refund of Prior Year Revenues / Receipts				\$57,102.00

LEA : 123465303 Methacton SD

Printed 10/23/2018 2:38:47 PM

General Fund (10)

5200 Interfund Transfers – Out	<u>Elementary</u>	<u>Secondary</u>	<u>Federal</u>	<u>Total</u>
900 <u>Other Uses of Funds</u>				
939 Other Fund Transfers				200,000.00
Total Other Uses of Funds				\$200,000.00
Total 5200 Interfund Transfers – Out				\$200,000.00

LEA : 123465303 Methacton SD

Printed 10/23/2018 2:38:47 PM

General Fund (10)

5230 Capital Projects Fund Transfers	<u>Elementary</u>	<u>Secondary</u>	<u>Federal</u>	<u>Total</u>
900 <u>Other Uses of Funds</u>				
939 Other Fund Transfers				200,000.00
Total Other Uses of Funds				\$200,000.00
Total 5230 Capital Projects Fund Transfers				\$200,000.00

LEA : 123465303 Methacton SD

Printed 10/23/2018 2:38:43 PM

Other Capital Projects Fund (39)

2000 Support Services

Total

800 <u>Other Objects</u>	
810 Dues and Fees	100,897.48
890 Miscellaneous Expenditures	368,692.36
Total Other Objects	\$469,589.84
Total 2000 Support Services	\$469,589.84

LEA : 123465303 Methacton SD

Printed 10/23/2018 2:38:43 PM

Other Capital Projects Fund (39)

2300 Support Services – Administration

Elementary Secondary Federal Total

800 <u>Other Objects</u>				
810 Dues and Fees				100,647.48
890 Miscellaneous Expenditures				368,692.36
Total Other Objects				\$469,339.84
Total 2300 Support Services – Administration				\$469,339.84

LEA : 123465303 Methacton SD

Printed 10/23/2018 2:38:43 PM

Other Capital Projects Fund (39)

2310 Board Services	<u>Elementary</u>	<u>Secondary</u>	<u>Federal</u>	<u>Total</u>
800 <u>Other Objects</u>				
810 Dues and Fees				34.90
Total Other Objects				\$34.90
Total 2310 Board Services				\$34.90

LEA : 123465303 Methacton SD

Printed 10/23/2018 2:38:43 PM

Other Capital Projects Fund (39)

2390 Other Administration Services

Elementary Secondary Federal Total

800 <u>Other Objects</u>				
810 Dues and Fees				100,612.58
890 Miscellaneous Expenditures				368,692.36
Total Other Objects				\$469,304.94
Total 2390 Other Administration Services				\$469,304.94

LEA : 123465303 Methacton SD

Printed 10/23/2018 2:38:43 PM

Other Capital Projects Fund (39)

2500 Support Services – Business

<u>Elementary</u>	<u>Secondary</u>	<u>Federal</u>	<u>Total</u>
-------------------	------------------	----------------	--------------

800 Other Objects

810 Dues and Fees			250.00
-------------------	--	--	--------

Total Other Objects			\$250.00
----------------------------	--	--	-----------------

Total 2500 Support Services – Business			\$250.00
---	--	--	-----------------

LEA : 123465303 Methacton SD

Printed 10/23/2018 2:38:43 PM

Other Capital Projects Fund (39)

2510 Fiscal Services	<u>Elementary</u>	<u>Secondary</u>	<u>Federal</u>	<u>Total</u>
800 <u>Other Objects</u>				
810 Dues and Fees				250.00
Total Other Objects				\$250.00
Total 2510 Fiscal Services				\$250.00

LEA : 123465303 Methacton SD

Printed 10/23/2018 2:38:43 PM

Other Capital Projects Fund (39)

2515 Financial Accounting Services

	<u>Elementary</u>	<u>Secondary</u>	<u>Federal</u>	<u>Total</u>
800 <u>Other Objects</u>				
810 Dues and Fees				250.00
Total Other Objects				\$250.00
Total 2515 Financial Accounting Services				\$250.00

LEA : 123465303 Methacton SD

Printed 10/23/2018 2:38:46 PM

Other Capital Projects Fund (39)

4000 Facilities Acquisition, Construction and Improvement Services	<u>Total</u>
300 <u>Purchased Professional and Technical Services</u>	
330 Other Professional Services	633,368.58
Total Purchased Professional and Technical Services	\$633,368.58
400 <u>Purchased Property Services</u>	
450 Construction Services	1,362,881.41
Total Purchased Property Services	\$1,362,881.41
500 <u>Other Purchased Services</u>	
549 Other Advertising/Public Relations	5,657.72
Total Other Purchased Services	\$5,657.72
600 <u>Supplies</u>	
610 General Supplies	2,075.00
Total Supplies	\$2,075.00
700 <u>Property</u>	
752 Capital Equipment – Original and Additional	13,813.00
Total Property	\$13,813.00
Total 4000 Facilities Acquisition, Construction and Improvement Services	\$2,017,795.71

LEA : 123465303 Methacton SD

Printed 10/23/2018 2:38:46 PM

Other Capital Projects Fund (39)

4200 Existing Site Improvement Services

<u>Elementary</u>	<u>Secondary</u>	<u>Federal</u>	<u>Total</u>
-------------------	------------------	----------------	--------------

300 Purchased Professional and Technical Services

330 Other Professional Services			99,353.64
---------------------------------	--	--	-----------

Total Purchased Professional and Technical Services			\$99,353.64
--	--	--	--------------------

Total 4200 Existing Site Improvement Services			\$99,353.64
--	--	--	--------------------

LEA : 123465303 Methacton SD

Printed 10/23/2018 2:38:46 PM

Other Capital Projects Fund (39)

4300 Architecture and Engineering Services / Educational Specifications Development – Original and Additional	<u>Elementary</u>	<u>Secondary</u>	<u>Federal</u>	<u>Total</u>
300 <u>Purchased Professional and Technical Services</u>				
330 Other Professional Services				5,708.87
Total Purchased Professional and Technical Services				\$5,708.87
Total 4300 Architecture and Engineering Services / Educational Specifications Development – Original and Additional				\$5,708.87

LEA : 123465303 Methacton SD

Printed 10/23/2018 2:38:46 PM

Other Capital Projects Fund (39)

4600 Existing Building Improvement Services	<u>Elementary</u>	<u>Secondary</u>	<u>Federal</u>	<u>Total</u>
300 <u>Purchased Professional and Technical Services</u>				
330 Other Professional Services				528,306.07
Total Purchased Professional and Technical Services				\$528,306.07
400 <u>Purchased Property Services</u>				
450 Construction Services				1,362,881.41
Total Purchased Property Services				\$1,362,881.41
500 <u>Other Purchased Services</u>				
549 Other Advertising/Public Relations				5,657.72
Total Other Purchased Services				\$5,657.72
600 <u>Supplies</u>				
610 General Supplies				2,075.00
Total Supplies				\$2,075.00
700 <u>Property</u>				
752 Capital Equipment – Original and Additional				13,813.00
Total Property				\$13,813.00
Total 4600 Existing Building Improvement Services				\$1,912,733.20

LEA : 123465303 Methacton SD

Printed 10/23/2018 2:38:49 PM

Other Capital Projects Fund (39)

5000 Other Expenditures and Financing Uses

Total

800 <u>Other Objects</u>	
830 Interest	4,282.71
Total Other Objects	\$4,282.71
900 <u>Other Uses of Funds</u>	
910 Redemption of Principal	18,789,009.51
Total Other Uses of Funds	\$18,789,009.51
Total 5000 Other Expenditures and Financing Uses	\$18,793,292.22

LEA : 123465303 Methacton SD

Printed 10/23/2018 2:38:49 PM

Other Capital Projects Fund (39)

5100 Debt Service / Other Expenditures and Financing Uses	<u>Elementary</u>	<u>Secondary</u>	<u>Federal</u>	<u>Total</u>
800 <u>Other Objects</u>				
830 Interest				4,282.71
Total Other Objects				\$4,282.71
900 <u>Other Uses of Funds</u>				
910 Redemption of Principal				18,789,009.51
Total Other Uses of Funds				\$18,789,009.51
Total 5100 Debt Service / Other Expenditures and Financing Uses				\$18,793,292.22

LEA : 123465303 Methacton SD

Printed 10/23/2018 2:38:49 PM

Other Capital Projects Fund (39)

5110 Debt Service	<u>Elementary</u>	<u>Secondary</u>	<u>Federal</u>	<u>Total</u>
800 <u>Other Objects</u>				
830 Interest				4,282.71
Total Other Objects				\$4,282.71
Total 5110 Debt Service				\$4,282.71

LEA : 123465303 Methacton SD

Printed 10/23/2018 2:38:49 PM

Other Capital Projects Fund (39)

5120 Debt Service – Refunded Bonds

Elementary

Secondary

Federal

Total

900 Other Uses of Funds

910 Redemption of Principal

18,789,009.51

Total Other Uses of Funds				\$18,789,009.51
Total 5120 Debt Service – Refunded Bonds				\$18,789,009.51

LEA : 123465303 Methacton SD

Printed 10/23/2018 2:38:53 PM

	General Fund(10)	Public Purpose Trust(27)	Other Compt Approved(28)	Athletic / Activity(29)	Capital Reserve (690.1850)(31)
1000 Instruction					
1100 Regular Programs - Elementary / Secondary	41,096,905.22				
1200 Special Programs - Elementary / Secondary	15,309,730.19				
1300 Vocational Education	2,554,842.60				
1400 Other Instructional Programs - Elementary / Secondary	283,997.45				
1500 Nonpublic School Programs	2,434.00				
1600 Adult Education Programs	151,122.99				
Total Instruction	\$59,399,032.45				
2000 Support Services					
2100 Support Services - Students	4,514,623.72				
2200 Support Services - Instructional Staff	2,546,788.63				
2300 Support Services - Administration	6,230,605.26				
2400 Support Services - Pupil Health	1,640,388.03				
2500 Support Services - Business	1,004,174.94				
2600 Operation and Maintenance of Plant Services	8,450,310.93				
2700 Student Transportation Services	7,201,158.20				
2800 Support Services - Central	1,749,240.44				
2900 Other Support Services	74,269.56				
Total Support Services	\$33,411,559.71				
3000 Operation of Non-Instructional Services					
3200 Student Activities	1,458,012.77				
3300 Community Services	3,108.77				
Total Operation of Non-Instructional Services	\$1,461,121.54				
4000 Facilities Acquisition, Construction and Improvement Services					
4200 Existing Site Improvement Services					
4300 Architecture and Engineering Services / Educational Specifications Development - Original and Additional					
4600 Existing Building Improvement Services					
Total Facilities Acquisition, Construction and Improvement Services					
5000 Other Expenditures and Financing Uses					
5100 Debt Service / Other Expenditures and Financing Uses	9,695,080.92				
5200 Interfund Transfers - Out	200,000.00				
Total Other Expenditures and Financing Uses	\$9,895,080.92				
TOTAL ACTUAL EXPENDITURES & OTHER FINANCING USES	\$104,166,794.62				

LEA : 123465303 Methacton SD

Printed 10/23/2018 2:38:53 PM

	<u>Capital Reserve (1431)(32)</u>	<u>Other Capital Projects Fund(39)</u>	<u>Debt Service(40)</u>	<u>Permanent(90)</u>	<u>Total</u>
1000 Instruction					
1100 Regular Programs - Elementary / Secondary					41,096,905.22
1200 Special Programs - Elementary / Secondary					15,309,730.19
1300 Vocational Education					2,554,842.60
1400 Other Instructional Programs - Elementary / Secondary					283,997.45
1500 Nonpublic School Programs					2,434.00
1600 Adult Education Programs					151,122.99
Total Instruction					\$59,399,032.45
2000 Support Services					
2100 Support Services - Students					4,514,623.72
2200 Support Services - Instructional Staff					2,546,788.63
2300 Support Services - Administration		469,339.84			6,699,945.10
2400 Support Services - Pupil Health					1,640,388.03
2500 Support Services - Business		250.00			1,004,424.94
2600 Operation and Maintenance of Plant Services					8,450,310.93
2700 Student Transportation Services					7,201,158.20
2800 Support Services - Central					1,749,240.44
2900 Other Support Services					74,269.56
Total Support Services		\$469,589.84			\$33,881,149.55
3000 Operation of Non-Instructional Services					
3200 Student Activities					1,458,012.77
3300 Community Services					3,108.77
Total Operation of Non-Instructional Services					\$1,461,121.54
4000 Facilities Acquisition, Construction and Improvement Services					
4200 Existing Site Improvement Services		99,353.64			99,353.64
4300 Architecture and Engineering Services / Educational Specifications Development - Original and Additional		5,708.87			5,708.87
4600 Existing Building Improvement Services		1,912,733.20			1,912,733.20
Total Facilities Acquisition, Construction and Improvement Services		\$2,017,795.71			\$2,017,795.71
5000 Other Expenditures and Financing Uses					
5100 Debt Service / Other Expenditures and Financing Uses		18,793,292.22			28,488,373.14
5200 Interfund Transfers - Out					200,000.00
Total Other Expenditures and Financing Uses		\$18,793,292.22			\$28,688,373.14
TOTAL ACTUAL EXPENDITURES & OTHER FINANCING USES		\$21,280,677.77			\$125,447,472.39

LEA : 123465303 Methacton SD

Printed 10/23/2018 2:38:59 PM

PSERS Salary Data (Salary Data should relate to the General Fund only)

Amount	Description	Amount
	Total Salary Base for salaries subject to PSERS withholding	40,551,398.48
	Total Federally Funded salaries subject to PSERS withholding	1,159,271.91

Title I Expenditure Data

Amount	Description	Amount
	Expenditures Funded with Current Title I Funds	334,562.89
	Expenditures Funded with Carry over Title I Funds	
Total Title I Expenditure Data		\$334,562.89

Benefits for Staff Relative to Collective Bargaining Agreements

	OBJECT	COVERED	NOT COVERED	TOTAL
10 General Fund				
	211 Medical Insurance			
	212 Dental Insurance			
	215 Eye Care Insurance	33,894.65		33,894.65
	216 Prescription Insurance			
	271 Self-Insurance Medical Benefits	7,037,273.90		7,037,273.90
	272 Self-Insurance Dental Benefits	307,934.61		307,934.61
	275 Self-Insurance Eye Care Benefits			
	276 Self-Insurance Prescription Benefits	2,106,722.77		2,106,722.77
	FUND TOTAL	\$9,485,825.93		\$9,485,825.93
50 Enterprise Fund	No Self Insurance data to report			
	211 Medical Insurance			
	212 Dental Insurance			
	215 Eye Care Insurance			
	216 Prescription Insurance			
	271 Self-Insurance Medical Benefits			
	272 Self-Insurance Dental Benefits			
	275 Self-Insurance Eye Care Benefits			
	276 Self-Insurance Prescription Benefits			
	FUND TOTAL			
60 Internal Service Fund	No Self Insurance data to report			
	211 Medical Insurance			
	212 Dental Insurance			
	215 Eye Care Insurance			
	216 Prescription Insurance			
	271 Self-Insurance Medical Benefits			
	272 Self-Insurance Dental Benefits			
	275 Self-Insurance Eye Care Benefits			
	276 Self-Insurance Prescription Benefits			
	FUND TOTAL			
Total of All Funds		\$9,485,825.93		\$9,485,825.93

LEA : 123465303 Methacton SD

Printed 10/23/2018 2:39:02 PM

Function	Special Education (Prior Year)	Nonspecial Education (Prior Year)	Total (Prior Year)	Special Education (Current Year)	Nonspecial Education (Current Year)	Total (Current Year)
2120 Guidance Services	247,717.76	2,229,459.79	2,477,177.55	252,986.69	2,276,880.18	2,529,866.87
2140 Psychological Services	429,916.21	107,479.05	537,395.26	413,330.58	103,332.64	516,663.22
2150 Speech Pathology and Audiology Services						
2160 Social Work Services	7,271.25	138,153.75	145,425.00	10,218.50	194,151.50	204,370.00
2260 Instruction and Curriculum Development Services	24,507.69	465,646.17	490,153.86	25,811.16	490,412.13	516,223.29
2350 Legal and Accounting Services	175,233.31	163,621.14	338,854.45	109,211.88	323,685.88	432,897.76
2420 Medical Services	386,332.42	42,925.82	429,258.24	385,914.36	42,879.37	428,793.73
2440 Nursing Services	122,443.75	1,101,993.74	1,224,437.49	120,607.08	1,085,463.69	1,206,070.77
2700 Student Transportation Services	699,808.89	6,298,280.00	6,998,088.89	720,115.82	6,481,042.38	7,201,158.20
Total	\$2,093,231.28	\$10,547,559.46	\$12,640,790.74	\$2,038,196.07	\$10,997,847.77	\$13,036,043.84

LEA : 123465303 Methacton SD

Printed 10/23/2018 2:39:03 PM

(PRINCIPAL AMOUNTS ONLY)								
<u>GOVERNMENTAL FUNDS/ ACTIVITIES</u>	Short-Term Borrowing	General Obligation Bonds/Notes	Authority Building Obligations	Other Long-Term Debt	Other Post- Employment Benefits (OPEB)	Compensated Absences	Net Pension Liability	Total
1. Debt at Beginning of Fiscal Year		73,285,000.00		2,164,675.00	12,557,365.00	2,443,817.00	163,984,000.00	254,434,857.00
2. Additional Debt Incurred During Year		25,890,000.00			17,581,739.00	358,124.00		43,829,863.00
3. Retirements and Repayments		25,880,000.00		146,387.00	5,984,365.00		4,657,000.00	36,667,752.00
4. Debt at End of Fiscal Year		73,295,000.00		2,018,288.00	24,154,739.00	2,801,941.00	159,327,000.00	261,596,968.00
5. Accreted Interest at End Of Fiscal Year								
6. Total Debt and Accreted Interest		73,295,000.00		2,018,288.00	24,154,739.00	2,801,941.00	159,327,000.00	261,596,968.00
7. Current Portion P&I - Due within 1 year		9,522,832.01		154,503.00		140,097.00		9,817,432.01
8. Interest Paid during current fiscal year		2,272,025.00						2,272,025.00

(PRINCIPAL AMOUNTS ONLY)							
<u>PROPRIETARY FUNDS</u>							
1. Debt at Beginning of Fiscal Year							
2. Additional Debt Incurred During Year							
3. Retirements and Repayments							
4. Debt at End of Fiscal Year							
5. Accreted Interest at End Of Fiscal Year							
6. Total Debt and Accreted Interest							
7. Current Portion P&I - Due within 1 year							
8. Interest Paid during current fiscal year							

LEA : 123465303 Methacton SD

Printed 10/23/2018 2:39:03 PM

Total Principal and Interest Payments Made by Your School - All Funds

Function	Fund		Principal (910)	Principal (920)	Interest (830)	Total (Principal +Interest)	Misc Other Uses (990)
5110	10	General Fund	7,316,388.19		2,321,590.73	9,637,978.92	
5110	20	Special Revenue Funds					
5110	30	Capital Projects Funds			4,282.71	4,282.71	
5110	40	Debt Service Fund					
5110	90	Permanent Fund					
5120	10	General Fund					
5120	20	Special Revenue Funds					
5120	30	Capital Projects Funds	18,789,009.51			18,789,009.51	
5120	40	Debt Service Fund					
Total Debt Payments - Governmental Funds			\$26,105,397.70		\$2,325,873.44	\$28,431,271.14	
Function	Fund		Principal (910)	Principal (920)	Interest (830)	Total (Principal +Interest)	
5110	50	Enterprise Fund					
5110	60	Internal Service Fund					
5120	50	Enterprise Fund					
5120	60	Internal Service Fund					
Total Debt Payments - Proprietary Funds							

LEA : 123465303 Methacton SD

Printed 10/23/2018 2:39:03 PM

Debt Details
Governmental Funds/ Activities

Debt Category	Debt Issue Date (MM/YYYY)	Principal Amounts Only				Current Portion Due Within One Year (Principal and Interest)	Interest Paid During Fiscal Year
		Debt at Beginning of Fiscal Year	Additions	Reductions / Repayments	Debt at End of Fiscal Year		
General Obligation Bonds/Notes – CIB	06/2018		5,915,000.00		5,915,000.00	175,658.54	
General Obligation Bonds/Notes – CIB	06/2018		5,400,000.00		5,400,000.00	133,303.46	
General Obligation Bonds/Notes – CIB	12/2017		6,075,000.00		6,075,000.00	1,019,300.00	46,826.00
General Obligation Bonds/Notes – CIB	12/2017		8,500,000.00		8,500,000.00	280,557.50	55,524.00
General Obligation Bonds/Notes – CIB	03/2016	27,945,000.00		50,000.00	27,895,000.00	1,203,350.00	1,153,850.00
General Obligation Bonds/Notes – CIB	01/2015	5,485,000.00		5,485,000.00			132,763.00
General Obligation Bonds/Notes – CIB	05/2015	2,460,000.00		475,000.00	1,985,000.00	780,100.00	86,525.00
General Obligation Bonds/Notes – CIB	05/2015	1,750,000.00		215,000.00	1,535,000.00	273,925.00	51,750.00
General Obligation Bonds/Notes – CIB	06/2013	4,210,000.00		5,000.00	4,205,000.00	104,036.25	99,093.00
General Obligation Bonds/Notes – CIB	06/2013	5,465,000.00		5,465,000.00			189,100.00
General Obligation Bonds/Notes – CIB	06/2013	2,520,000.00		5,000.00	2,515,000.00	80,726.26	75,784.00
General Obligation Bonds/Notes – CIB	10/2012	1,500,000.00		1,500,000.00			32,034.00
General Obligation Bonds/Notes – CIB	12/2012	5,465,000.00		845,000.00	4,620,000.00	762,200.00	94,050.00
General Obligation Bonds/Notes – CIB	12/2012	3,930,000.00		1,915,000.00	2,015,000.00	2,035,150.00	55,325.00
General Obligation Bonds/Notes – CIB	06/2012	5,320,000.00		2,685,000.00	2,635,000.00	2,674,525.00	111,050.00
General Obligation Bonds/Notes – CIB	09/2011	7,235,000.00		7,235,000.00			88,351.00
Other Long Term Debt/Liabilities		2,164,675.00		146,387.00	2,018,288.00	154,503.00	
Compensated Absences		2,443,817.00	358,124.00		2,801,941.00	140,097.00	
Other Post-Employment Benefits (OPEB)		12,557,365.00	17,581,739.00	5,984,365.00	24,154,739.00		
Net Pension Liability		163,984,000.00		4,657,000.00	159,327,000.00		
Totals for Debt Entered:		\$254,434,857.00	\$43,829,863.00	\$36,667,752.00	\$261,596,968.00	\$9,817,432.01	\$2,272,025.00

LEA : 123465303 Methacton SD

Printed 10/23/2018 2:39:04 PM

General Fund (10)

Section 1: Tuition/Purchased Services as Reported within Expenditure Detail	Amount
Tuition Reported in General Fund Expenditures 1000-560	3,610,077.01
Purchased Services in General Fund Expenditures 1000-594 and 1000-597	
Section 1 Total	\$3,610,077.01

Section 2: Tuition Paid to Institution Types During Fiscal Year	Tuition Paid For Nonspecial Education	Tuition Paid For Special Education	Total
1 1306 Institutions			
2 Institutionalized Children's Programs			
3 Juveniles Incarcerated in Adult Facilities			
4 Residential Treatment Facilities			
5 Other Local Education Agencies	24,038.92	149,777.12	173,816.04
6 Brick and Mortar Charter Schools	350,816.45	204,858.78	555,675.23
7 Cyber Charter Schools	415,443.04	218,018.23	633,461.27
8 Career and Technology Centers	1,322,587.77		1,322,587.77
9 Approved Private Schools		481,224.51	481,224.51
10 PA Chartered Schools for the Deaf and Blind			
11 Private Residential Rehabilitative Institutions	10,720.32	403,507.87	414,228.19
12 Juvenile Detention Centers	11,084.00		11,084.00
13 Special Program Jointures			
14 Other Tuition Not Included Elsewhere In This Section		18,000.00	18,000.00
Section 2 Total	\$2,134,690.50	\$1,475,386.51	\$3,610,077.01

LEA : 123465303 Methacton SD

Printed 10/23/2018 2:39:06 PM

Food Service / Cafeteria Operations Fund (51)

3000 Operation of Non-Instructional Services

Total

500	<u>Other Purchased Services</u>	
570	Food Service Management	1,349,820.00
Total Other Purchased Services		\$1,349,820.00
600	<u>Supplies</u>	
610	General Supplies	2,298.00
630	Food	74,482.00
Total Supplies		\$76,780.00
700	<u>Property</u>	
740	Depreciation	7,690.00
Total Property		\$7,690.00
Total 3000 Operation of Non-Instructional Services		\$1,434,290.00

LEA : 123465303 Methacton SD

Printed 10/23/2018 2:39:06 PM

Food Service / Cafeteria Operations Fund (51)

3100 Food Services	<u>Elementary</u>	<u>Secondary</u>	<u>Federal</u>	<u>Total</u>
500 <u>Other Purchased Services</u>				
570 Food Service Management				1,349,820.00
Total Other Purchased Services				\$1,349,820.00
600 <u>Supplies</u>				
610 General Supplies				2,298.00
630 Food				74,482.00
Total Supplies				\$76,780.00
700 <u>Property</u>				
740 Depreciation				7,690.00
Total Property				\$7,690.00
Total 3100 Food Services				\$1,434,290.00

	<u>Food Service(51)</u>	<u>Child Care Operations(52)</u>	<u>Other Enterprise(58)</u>	<u>Internal Service(60)</u>	<u>Total</u>
3000 <u>Operation of Non-Instructional Services</u>					
3100 Food Services	1,434,290.00				1,434,290.00
Total Operation of Non-Instructional Services	\$1,434,290.00				\$1,434,290.00
TOTAL ACTUAL EXPENDITURES & OTHER FINANCING USES	\$1,434,290.00				\$1,434,290.00