

LEA Name : Methacton SD
Address : 1001 Kriebel Mill Rd
Eagleville , PA 19403

County : Montgomery
AUN Number : 123465303
LEA Type : SD

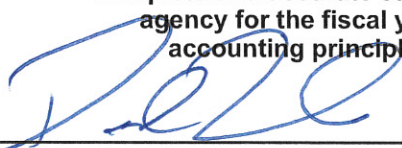
Annual Financial Report Accuracy Certification Statement

For Fiscal Year Ending
6/30/2017

Pennsylvania Department of Education
&
Office of Comptroller Operations

PDE-2056: Intermediate Unit
PDE-2057: School District, AVTS/CTC, Charter School,
and Special Program Jointure

CERTIFICATION: By signing this page I agree that the electronic data submitted is a complete and accurate statement of the financial operations and status of the local education agency for the fiscal year. It has been prepared in accordance with generally accepted accounting principles and established Commonwealth of PA reporting guidelines.



Chief School Administrator Signature

Date

10/17/2017



Board Secretary Signature

Date

10/17/2017

Danielle Penza

Contact Person

dpenza@methacton.org

Contact Person E-mail Address

(610)489-5000

Ext :15005

Contact Person Telephone Number

(610)489-5019

Contact Person Fax Number

Audit Certification
Annual Financial Report:
For Fiscal Year Ending **6/30/2017**
(Pursuant to PA School Code Section 218(b))

LEA Name : Methacton SD
AUN Number : 123465303
County : Montgomery

Audit Certification Due: 12/31/2017

This certification is applicable to the Annual Financial Report data submitted
through the Consolidated Financial Reporting System on: 10/17/17
Date

Auditing Firm: Major & Mastro, LLC
593 Bethlehem Pike, Suite 6
Montgomeryville, PA 18936

Auditor Contact Name: Vicki Mastro
Auditor Phone: 215-822-2350
Auditor E-mail: vmastro@majormastro.com

CERTIFICATION: By signing this page I agree that the financial statements of the school have been properly audited as noted above pursuant to Article XXIV, and in the auditor's professional opinion, the Annual Financial Report (PDE-2057) submitted on the date referenced is materially consistent with the audited financial statements.

Chief School Administrator

Signature

Date

Board Secretary

Signature

Date

Danielle Penza

Contact Person

dpenza@methacton.org

Contact Person E-mail Address

(610)489-5000

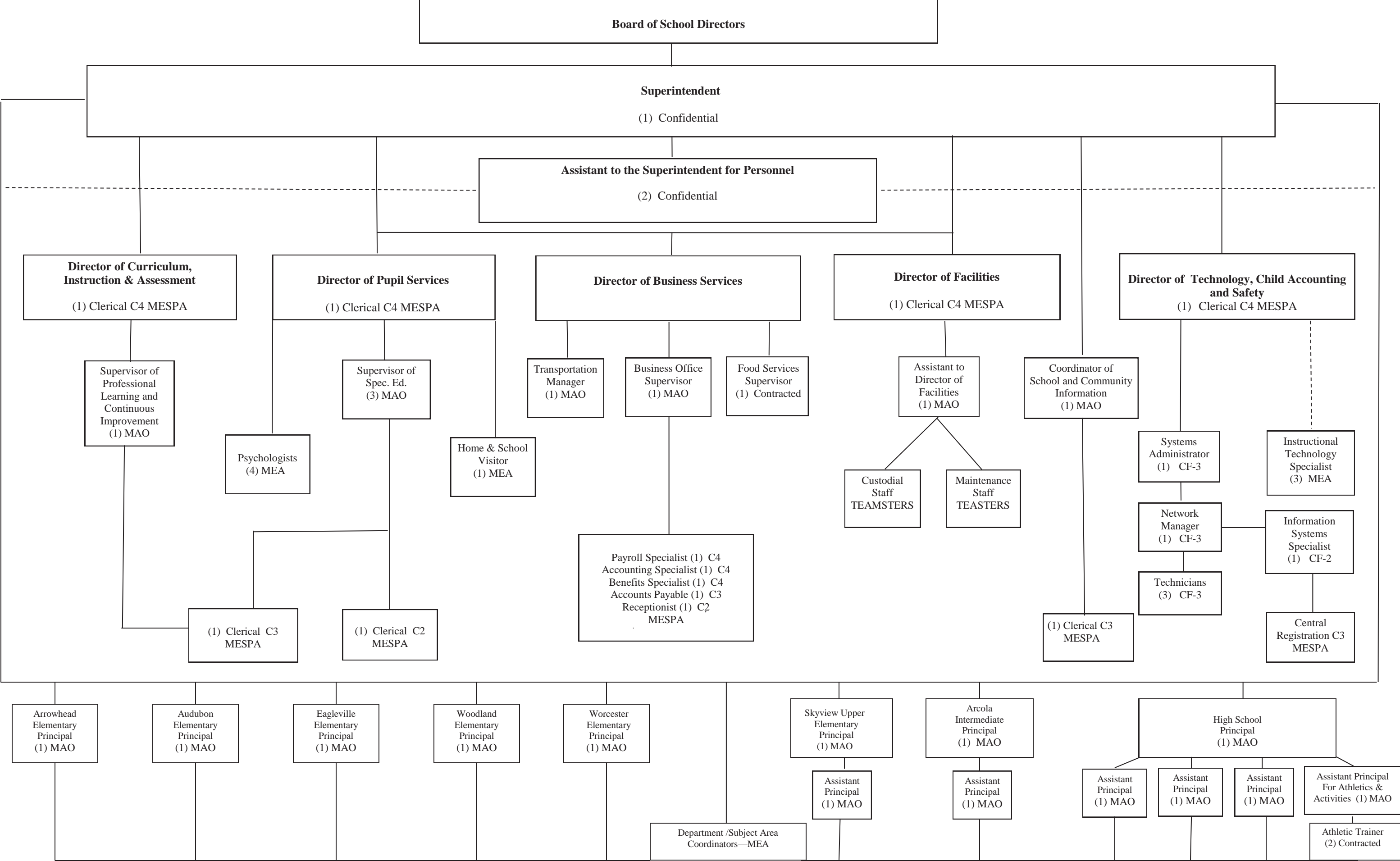
Ext :15005

Contact Person Telephone Number

(610)489-5019

Contact Person Fax Number

METHACTON SCHOOL DISTRICT
ORGANIZATIONAL CHART



<u>Val Number</u>	<u>Description</u>	<u>Justification</u>
50450	<p>SESS - 2350 Legal and Accounting Services: SESS Schedule amounts for Special Education vary from prior year by 40% or more. Correct the data or enter a justification.</p> <p>SESS Schedule 2350: \$175,233.31 Prior Year SESS Schedule 2350: \$103,831.99</p>	<p>In 2015-16 we received \$44,894.09 reimbursement for legal fees from our insurance company based on our policy for one particular special education due process.</p>

LEA : 123465303 Methacton SD

Printed 10/17/2017 3:10:34 PM

Amounts Expressed in Whole Dollars		<u>General Fund</u> <u>(10)</u>	<u>Public Purpose Trust</u> <u>(27)</u>	<u>Other Compt Approved</u> <u>(28)</u>	<u>Athletic / Activity</u> <u>(29)</u>	<u>Capital Reserve (690.</u> <u>1850)</u> <u>(31)</u>
Assets And Deferred Outflows Of Resources						
Assets						
0100	Cash and Cash Equivalents	16,149,786				
0110	Investments					
0120	Taxes Receivable	1,945,945				
0130	Due From Other Funds	495,485				
0141	Due From Other Governments					
0142	State Revenue Receivable	2,795,684				
0143	Federal Revenue Receivable	202,444				
0145	Other Intergovernmental Revenue Receivable					
0146	Due from Primary Government					
0147	Due from Component Unit					
0150	Other Receivables	757,303				
0170	Inventories					
0180	Prepaid Expenses (Expenditures)	1,265,558				
0190	Other Current Assets					
Total Assets		\$23,612,205				
0910	Deferred Outflows of Resources					
Total Assets And Deferred Outflows Of Resources		\$23,612,205				

LEA : 123465303 Methacton SD

Printed 10/17/2017 3:10:34 PM

Amounts Expressed in Whole Dollars		<u>Capital Reserve (1431)</u> <u>(32)</u>	<u>Other Capital Projects</u> <u>Fund</u> <u>(39)</u>	<u>Debt Service</u> <u>(40)</u>	<u>Permanent</u> <u>(90)</u>	<u>Total Governmental</u> <u>Funds</u>
Assets And Deferred Outflows Of Resources						
Assets						
0100	Cash and Cash Equivalents		1,673,749			17,823,535
0110	Investments					
0120	Taxes Receivable					1,945,945
0130	Due From Other Funds					495,485
0141	Due From Other Governments					
0142	State Revenue Receivable					2,795,684
0143	Federal Revenue Receivable					202,444
0145	Other Intergovernmental Revenue Receivable					
0146	Due from Primary Government					
0147	Due from Component Unit					
0150	Other Receivables					757,303
0170	Inventories					
0180	Prepaid Expenses (Expenditures)					1,265,558
0190	Other Current Assets					
Total Assets			\$1,673,749			\$25,285,954
0910	Deferred Outflows of Resources					
Total Assets And Deferred Outflows Of Resources			\$1,673,749			\$25,285,954

LEA : 123465303 Methacton SD

Printed 10/17/2017 3:10:34 PM

Amounts Expressed in Whole Dollars		<u>General Fund</u> <u>(10)</u>	<u>Public Purpose Trust</u> <u>(27)</u>	<u>Other Compt Approved</u> <u>(28)</u>	<u>Athletic / Activity</u> <u>(29)</u>	<u>Capital Reserve (690.</u> <u>1850)</u> <u>(31)</u>
Liabilities And Deferred Inflows Of Resources And Fund Balances						
Liabilities						
0400	Due to Other Funds	2,613				
0411	Due to Other Governments					
0412	Due to Primary Government					
0413	Due to Component Unit					
0420	Accounts Payable	1,589,361				
0430	Contracts Payable					
0440	Current Portion of Long-Term Debt	122,191				
0450	Short-Term Payables					
0461	Accrued Salaries and Benefits	3,707,467				
0462	Payroll Deductions and Withholding	4,298,273				
0480	Unearned Revenues	83,120				
0490	Other Current Liabilities	3,409,348				
Total Liabilities		\$13,212,373				
0950	Deferred Inflows of Resources	1,441,370				
Fund Balances						
0810	Nonspendable Fund Balance	1,265,558				
0820	Restricted Fund Balance					
0830	Committed Fund Balance	374,821				
0840	Assigned Fund Balance					
0850	Unassigned Fund Balance	7,318,083				
Total Fund Balances		\$8,958,462				
Total Liabilities, Deferred Inflows Of Resources And Fund Balances		\$23,612,205				

LEA : 123465303 Methacton SD

Printed 10/17/2017 3:10:34 PM

Amounts Expressed in Whole Dollars		<u>Capital Reserve (1431)</u> <u>(32)</u>	<u>Other Capital Projects</u> <u>Fund</u> <u>(39)</u>	<u>Debt Service</u> <u>(40)</u>	<u>Permanent</u> <u>(90)</u>	<u>Total Governmental</u> <u>Funds</u>
Liabilities And Deferred Inflows Of Resources And Fund Balances						
Liabilities						
0400	Due to Other Funds		375,087			377,700
0411	Due to Other Governments					
0412	Due to Primary Government					
0413	Due to Component Unit					
0420	Accounts Payable		50,133			1,639,494
0430	Contracts Payable					
0440	Current Portion of Long-Term Debt					122,191
0450	Short-Term Payables					
0461	Accrued Salaries and Benefits					3,707,467
0462	Payroll Deductions and Withholding					4,298,273
0480	Unearned Revenues					83,120
0490	Other Current Liabilities					3,409,348
Total Liabilities			\$425,220			\$13,637,593
0950	Deferred Inflows of Resources					1,441,370
Fund Balances						
0810	Nonspendable Fund Balance					1,265,558
0820	Restricted Fund Balance					
0830	Committed Fund Balance					374,821
0840	Assigned Fund Balance		1,248,529			1,248,529
0850	Unassigned Fund Balance					7,318,083
Total Fund Balances			\$1,248,529			\$10,206,991
Total Liabilities, Deferred Inflows Of Resources And Fund Balances			\$1,673,749			\$25,285,954

Amounts Expressed in Whole Dollars		<u>General Fund</u> <u>(10)</u>	<u>Public Purpose Trust</u> <u>(27)</u>	<u>Other Compt Approved</u> <u>(28)</u>	<u>Athletic / Activity</u> <u>(29)</u>	<u>Capital Reserve (690.</u> <u>1850)</u> <u>(31)</u>
Revenues						
6000	Revenue from Local Sources	81,612,630				
7000	Revenue from State Sources	22,514,306				
8000	Revenue from Federal Sources	666,223				
Total Revenues		\$104,793,159				
Expenditures						
1000	Instruction	59,273,739				
2000	Support Services	33,147,387				
3000	Operation of Non-Instructional Services	1,392,354				
4000	Facilities Acquisition, Construction and Improvement Services					
5110	Debt Service	9,560,883				
5130	Refund of Prior Year Revenues / Receipts	18,318				
Total Expenditures		\$103,392,681				
Excess (Deficiency) Of Revenues Over Expenditures		\$1,400,478				
Other Financing Sources (Uses)						
9110	Face Value of Bonds Issued					
9120	Proceeds from Refunding of Bonds					
9130	Bond Premiums					
9200	Proceeds from Extended-Term Financing	16,712				
9300	Interfund Transfers - IN	872				
9400	Sale of or Compensation for Loss of Fixed Assets					
9710	Transfers from Component Units					
9720	Transfers from Primary Governments					
9910	Other Financing Sources Not Listed in the 9000 Series					
9990	Insurance Recoveries					
5120	Debt Service – Refunded Bonds					
5150	Bond Discounts					
5200	Interfund Transfers – Out	300,000				
5300	Transfers Out to Component Units/Primary Governments					
Total Other Financing Sources (Uses)		(\$282,416)				

LEA : 123465303 Methacton SD

Printed 10/17/2017 3:10:38 PM

Amounts Expressed in Whole Dollars		<u>Capital Reserve (1431</u> <u>(32)</u>	<u>Other Capital Projects</u> <u>Fund</u> <u>(39)</u>	<u>Debt Service</u> <u>(40)</u>	<u>Permanent</u> <u>(90)</u>	<u>Total Governmental</u> <u>Funds</u>
Revenues						
6000	Revenue from Local Sources		140,188			81,752,818
7000	Revenue from State Sources					22,514,306
8000	Revenue from Federal Sources					666,223
Total Revenues			\$140,188			\$104,933,347
Expenditures						
1000	Instruction					59,273,739
2000	Support Services		9,559			33,156,946
3000	Operation of Non-Instructional Services					1,392,354
4000	Facilities Acquisition, Construction and Improvement Services		551,082			551,082
5110	Debt Service		11,567			9,572,450
5130	Refund of Prior Year Revenues / Receipts					18,318
Total Expenditures			\$572,208			\$103,964,889
Excess (Deficiency) Of Revenues Over Expenditures			(\$432,020)			\$968,458
Other Financing Sources (Uses)						
9110	Face Value of Bonds Issued					
9120	Proceeds from Refunding of Bonds					
9130	Bond Premiums					
9200	Proceeds from Extended-Term Financing					16,712
9300	Interfund Transfers - IN		300,000			300,872
9400	Sale of or Compensation for Loss of Fixed Assets					
9710	Transfers from Component Units					
9720	Transfers from Primary Governments					
9910	Other Financing Sources Not Listed in the 9000 Series					
9990	Insurance Recoveries					
5120	Debt Service – Refunded Bonds					
5150	Bond Discounts					
5200	Interfund Transfers – Out		872			300,872
5300	Transfers Out to Component Units/Primary Governments					
Total Other Financing Sources (Uses)			\$299,128			\$16,712

Amounts Expressed in Whole Dollars		<u>General Fund</u> <u>(10)</u>	<u>Public Purpose Trust</u> <u>(27)</u>	<u>Other Compt Approved</u> <u>(28)</u>	<u>Athletic / Activity</u> <u>(29)</u>	<u>Capital Reserve</u> <u>(690.</u> <u>1850)</u> <u>(31)</u>
Special And Extraordinary Items						
9920	Special Items – Gains					
9930	Extraordinary Items – Gains					
5520	Special Items – Losses					
5530	Extraordinary Items – Losses					
Net Change In Fund Balances		\$1,118,062				
Fund Balance						
0001	Fund Balance - Beginning of Fiscal Year	7,840,399				
Fund Balance - End Of Year		\$8,958,461				

Amounts Expressed in Whole Dollars		<u>Capital Reserve (1431)</u> <u>(32)</u>	<u>Other Capital Projects</u> <u>Fund</u> <u>(39)</u>	<u>Debt Service</u> <u>(40)</u>	<u>Permanent</u> <u>(90)</u>	<u>Total Governmental</u> <u>Funds</u>
Special And Extraordinary Items						
9920	Special Items – Gains					
9930	Extraordinary Items – Gains					
5520	Special Items – Losses					
5530	Extraordinary Items – Losses					
Net Change In Fund Balances			(\$132,892)			\$985,170
Fund Balance						
0001	Fund Balance - Beginning of Fiscal Year		1,381,420			9,221,819
Fund Balance - End Of Year			\$1,248,528			\$10,206,989

LEA : 123465303 Methacton SD

Printed 10/17/2017 3:10:39 PM

Amounts Expressed in Whole Dollars	<u>Food Service</u> <u>(51)</u>	<u>Child Care</u> <u>Operations</u> <u>(52)</u>	<u>Other Enterprise</u> <u>(58)</u>	<u>TOTAL</u>	<u>Internal Service</u> <u>(60)</u>
Assets And Deferred Outflows Of Resources					
Current Assets					
0100 Cash and Cash Equivalents	259,401			259,401	
0110 Investments					
0130 Due From Other Funds	2,613			2,613	
0141 Due From Other Governments					
0142 State Revenue Receivable	5,040			5,040	
0143 Federal Revenue Receivable	57,492			57,492	
0146 Due from Primary Government					
0147 Due from Component Unit					
0150 Other Receivables	534			534	
0170 Inventories	23,981			23,981	
0180 Prepaid Expenses (Expenditures)					
0190 Other Current Assets					
Total Current Assets	\$349,061			\$349,061	
Noncurrent Assets					
0211 Land					
0212 Site Improvements (Net)					
0220 Buildings and Building Improvements (Net)					
0230 Machinery, Equipment and Furniture (Net)	61,019			61,019	
0250 Construction in Progress					
0260 Long Term Prepayments					
0290 Other Noncurrent Assets					
Total Noncurrent Assets	\$61,019			\$61,019	
0910 Deferred Outflows of Resources					
Total Assets And Deferred Outflows Of Resources	\$410,080			\$410,080	

Amounts Expressed in Whole Dollars	<u>Food Service</u> <u>(51)</u>	<u>Child Care</u> <u>Operations</u> <u>(52)</u>	<u>Other Enterprise</u> <u>(58)</u>	<u>TOTAL</u>	<u>Internal Service</u> <u>(60)</u>
Liabilities And Deferred Inflows Of Resources And Net Position					
Current Liabilities					
0400 Due to Other Funds	120,398			120,398	
0411 Due to Other Governments					
0413 Due to Component Unit					
0420 Accounts Payable	81,189			81,189	
0430 Contracts Payable					
0440 Current Portion of Long-Term Debt					
0450 Short-Term Payables					
0461 Accrued Salaries and Benefits					
0462 Payroll Deductions and Withholding					
0480 Unearned Revenues	8,651			8,651	
0490 Other Current Liabilities	42,094			42,094	
Total Current Liabilities	\$252,332			\$252,332	
Noncurrent Liabilities					
0510 Bonds Payable					
0520 Extended-Term Financing Agreements Payable					
0530 Lease-Purchase Obligations					
0540 Accumulated Compensated Absences					
0550 Authority Lease Obligations					
0560 Other Post-Employment Benefits (OPEB)					
0570 Net Pension Liability					
0599 Other Noncurrent Liabilities					
Total Noncurrent Liabilities					
Total Liabilities	\$252,332			\$252,332	
0950 Deferred Inflows of Resources					
Net Position					
0791 Net Investment in Capital Assets	61,019			61,019	
0008 Restricted Net Position (0792 – 0798)					
0799 Unrestricted Net Position	96,729			96,729	
Total Net Position	\$157,748			\$157,748	
Total Liabilities And Deferred Inflows Of Resources And Net Position	\$410,080			\$410,080	

Amounts Expressed in Whole Dollars	<u>Food Service</u> <u>(51)</u>	<u>Child Care Operations</u> <u>(52)</u>	<u>Other Enterprise</u> <u>(58)</u>	<u>TOTAL</u>	<u>Internal Service</u> <u>(60)</u>
Operating Revenues					
6600 Food Service Revenue	995,766			995,766	
0071 Charges for Services					
0072 Other Operating Revenue					
Total Operating Revenues	\$995,766			\$995,766	
Operating Expenses					
100 Personnel Services – Salaries					
200 Personnel Services – Employee Benefits					
300 Purchased Professional and Technical Services					
400 Purchased Property Services					
500 Other Purchased Services	1,337,170			1,337,170	
600 Supplies	82,616			82,616	
740 Depreciation	5,556			5,556	
810 Dues and Fees					
890 Miscellaneous Expenditures					
Total Operating Expenses	\$1,425,342			\$1,425,342	
Operating Income (Loss)	(\$429,576)			(\$429,576)	
Non Operating Revenues (Expenses)					
6500 Earnings on Investments	1,612			1,612	
6920 Contributions and Donations from Private Sources					
6930 Gains or Losses on Sale of Fixed Assets					
6991 Refunds of a Prior Year Expenditure					
7000 Revenue from State Sources	32,284			32,284	
8000 Revenue from Federal Sources	436,807			436,807	
820 Claims and Judgments Against the LEA					
830 Interest					
TOTAL Non Operating Revenues (Expenses)	\$470,703			\$470,703	
Income (Loss) Before Contributions And Transfers	\$41,127			\$41,127	

Amounts Expressed in Whole Dollars	<u>Food Service</u> <u>(51)</u>	<u>Child Care Operations</u> <u>(52)</u>	<u>Other Enterprise</u> <u>(58)</u>	<u>TOTAL</u>	<u>Internal Service</u> <u>(60)</u>
Contributions, Transfers, and Special and Extraordinary Items					
5200 Interfund Transfers – Out					
5300 Transfers Out to Component Units/Primary Governments					
5520 Special Items – Losses					
5530 Extraordinary Items – Losses					
9300 Interfund Transfers - IN					
9500 Capital Contributions					
9700 Transfers IN From Component Units/Primary Governments					
9920 Special Items – Gains					
9930 Extraordinary Items – Gains					
Change In Net Position	\$41,127			\$41,127	
0002 Net Position - Beginning of Fiscal Year	116,621			116,621	
0003 Accounting Changes / Residual Equity Transfers					
Net Position - End Of Year	\$157,748			\$157,748	

LEA : 123465303 Methacton SD

Printed 10/17/2017 3:10:44 PM

Amounts Expressed in Whole Dollars	Food Service (51)	Child Care Operations (52)	Other Enterprise (58)	TOTAL	Internal Service(60)
Cash Flows From Operating Activities					
0011 Cash Receipts From Users	1,001,165			1,001,165	
0012 Cash Receipts From Assessments Made to Other Funds					
0013 Cash Receipts From Earnings on Investments					
0014 Cash Receipts From Other Operating Revenue					
0015 Cash Payments To Employees For Services					
0016 Cash Payments For Insurance Claims					
0017 Cash Payments To Suppliers For Goods and Services	1,400,880			1,400,880	
0018 Cash Payments For Other Operating Expenses					
Net Cash Provided By (Used For) Operating Activities	(\$399,715)			(\$399,715)	
Cash Flows From Non-Capital Financing Activities					
0021 Receipts From Local Sources - 6000					
0022 Receipts From State Sources - 7000	31,857			31,857	
0023 Receipts From Federal Sources -8000	431,909			431,909	
0024 Notes and Loans Received (Repaid)					
0025 Interest Paid on Notes/Loans - 5100-830					
0026 Operating Transfers In (Out)/Residual Equity Trans					
0027 Operating Transfers In (Out) Primary Government / Comp Unit	(123,012)			(123,012)	
0028 Receipts From Refund of Prior Year Expenditures - 6991					
0029 Special and Extraordinary Gains (losses)					
Net Cash Prov By (Used for) Non-Capital Financing Activities	\$340,754			\$340,754	
Cash Flows From Capital and Related Financing Activities					
0031 Payments For Fac Acq, Const, and Imp - 4000	(33,652)			(33,652)	
0032 Gain / (Loss) on Sale of Fixed Assets - 6930					
0033 Proceeds From Extended Term Financing - 9200					
0034 Principal Paid on Financing Agreements					
0035 Interest Paid on Financing Agreements - 5100-830					
0036 (Inc) Dec in Contributed Capital					
Net Cash Prov By (Used for) Capital and Related Financing Activities	(\$33,652)			(\$33,652)	
Cash Flows From Investing Activities					
0041 Earnings on Investments - 6500	1,612			1,612	
0042 Purchase of Inv Securities / Deposits to Inv Pools					
0043 Receipts From Investment Pool Withdrawals					
0044 Proceeds from Sale and Maturity of Inv Securities					
0045 Loans Received (Paid)					
Net Cash Prov By (Used for) Investing Activities	\$1,612			\$1,612	

LEA : 123465303 Methacton SD

Printed 10/17/2017 3:10:44 PM

	Food Service (51)	Child Care Operations (52)	Other Enterprise (58)	TOTAL	Internal Service (60)
Net Increase (Decrease) in Cash Flows	(91,001)			(91,001)	
0004 Cash and Cash Equivalents Beginning of Year	350,402			350,402	
Cash and Cash Equivalents at Year End	\$259,401			\$259,401	
Reconciliation of Operating Income (Loss) To Net Cash Provided by (Used For) Operating Activities					
0005 Operating Income (Loss) per REP	(429,576)			(429,576)	
Adjustments					
0051 Depreciation and Net Amortization	5,556			5,556	
0052 Provision for Uncollectible Accounts					
0053 Other Adjustments					
Effect of Changes in Assets, Liabilities, Deferred Outflows and Deferred Inflows					
0054 (Inc) Dec In Accounts Receivable (0120-0150)	868			868	
0055 Advances to Other Funds (0160)					
0056 (Inc) Dec in Inventories (0170)	5,370			5,370	
0057 (Inc) Dec in Prepaid Expenses (0180)					
0058 (Inc) Dec in Other Current or Noncurrent Assets					
0064 Deferred Outflows (0910)					
0059 Inc (Dec) in Accounts Payable (0400-0450)	13,536			13,536	
0060 Inc (Dec) in Accrued Salaries/Benefits (0461)					
0065 Inc (Dec) in Net Pension Liabilities (0570)					
0066 Inc (Dec) in Other Postemp Benefit Oblig (0560)					
0061 Inc (Dec) in Payroll Deductions/Withholding (0462)					
0062 Inc (Dec) in Unearned Revenue (0480)					
0063 Inc (Dec) in Other Current or Noncurrent Liabilities	4,531			4,531	
0067 Deferred Inflows (0950)					
Total Adjustments	\$29,861			\$29,861	
Cash Provided By (Used for) Total	(\$399,715)			(\$399,715)	

COMBINED STATEMENT OF CASH FLOWS
SCHEDULE OF NONCASH INVESTING, CAPITAL, AND FINANCING ACTIVITIES

Explanation of Transaction and Balance Sheet Effect	Amount
Donated Commodities Received	72,833
Donated Commodities Used	72,222
Total	\$145,055

LEA : 123465303 Methacton SD

Printed 10/17/2017 3:10:45 PM

Amounts Expressed in Whole Dollars	<u>Private Purpose Trust</u> <u>(71)</u>	<u>Investment Trust</u> <u>(72)</u>	<u>Pension Trust</u> <u>(73)</u>	<u>Activity</u> <u>(81)</u>
Assets And Deferred Outflows Of Resources				
Assets				
0100 Cash and Cash Equivalents	94,781			404,339
0110 Investments				
0130 Due From Other Funds				
0147 Due from Component Unit				
0150 Other Receivables				4,150
0170 Inventories				
0180 Prepaid Expenses (Expenditures)				2,827
0190 Other Current Assets				
0220 Buildings and Building Improvements (Net)				
0230 Machinery, Equipment and Furniture (Net)				
Total Assets	\$94,781			\$411,316
0910 Deferred Outflows of Resources				
Total Assets And Deferred Outflows Of Resources	\$94,781			\$411,316

LEA : 123465303 Methacton SD

Printed 10/17/2017 3:10:45 PM

Amounts Expressed in Whole Dollars		<u>Other Agency</u> <u>(89)</u>	<u>Discrete Component Units</u> <u>(98)</u>	<u>Discrete Component Units</u> <u>(99)</u>	<u>Total Fiduciary Funds</u>
Assets And Deferred Outflows Of Resources					
Assets					
0100	Cash and Cash Equivalents				499,120
0110	Investments				
0130	Due From Other Funds				
0147	Due from Component Unit				
0150	Other Receivables				4,150
0170	Inventories				
0180	Prepaid Expenses (Expenditures)				2,827
0190	Other Current Assets				
0220	Buildings and Building Improvements (Net)				
0230	Machinery, Equipment and Furniture (Net)				
Total Assets					\$506,097
0910	Deferred Outflows of Resources				
Total Assets And Deferred Outflows Of Resources					\$506,097

LEA : 123465303 Methacton SD

Printed 10/17/2017 3:10:45 PM

Amounts Expressed in Whole Dollars	<u>Private Purpose Trust</u> <u>(71)</u>	<u>Investment Trust</u> <u>(72)</u>	<u>Pension Trust</u> <u>(73)</u>	<u>Activity</u> <u>(81)</u>
Liabilities, Deferred Inflows Of Resources And Net Position				
Liabilities				
0400 Due to Other Funds				
0411 Due to Other Governments				
0412 Due to Primary Government				
0413 Due to Component Unit				
0420 Accounts Payable				58,395
0430 Contracts Payable				
0450 Short-Term Payables				
0461 Accrued Salaries and Benefits				
0462 Payroll Deductions and Withholding				
0480 Unearned Revenues				
0490 Other Current Liabilities				352,921
Total Liabilities				\$411,316
0950 Deferred Inflows of Resources				
Net Position				
0791 Net Investment in Capital Assets				
0009 Restricted Net Position (0792 – 0798)	94,781			
0799 Unrestricted Net Position				
Total Net Position	\$94,781			
Total Liabilities, Deferred Inflows Of Resources And Net Position	\$94,781			\$411,316

LEA : 123465303 Methacton SD

Printed 10/17/2017 3:10:45 PM

Amounts Expressed in Whole Dollars

<u>Other Agency</u>	<u>Discrete Component Units</u>	<u>Discrete Component Units</u>	<u>Total Fiduciary Funds</u>
(89)	(98)	(99)	

Liabilities, Deferred Inflows Of Resources And Net Position

Liabilities

0400	Due to Other Funds			
0411	Due to Other Governments			
0412	Due to Primary Government			
0413	Due to Component Unit			
0420	Accounts Payable			58,395
0430	Contracts Payable			
0450	Short-Term Payables			
0461	Accrued Salaries and Benefits			
0462	Payroll Deductions and Withholding			
0480	Unearned Revenues			
0490	Other Current Liabilities			352,921
Total Liabilities				\$411,316

0950 Deferred Inflows of Resources

Net Position

0791	Net Investment in Capital Assets			
0009	Restricted Net Position (0792 – 0798)			94,781
0799	Unrestricted Net Position			
Total Net Position				\$94,781

Total Liabilities, Deferred Inflows Of Resources And Net Position				\$506,097
---	--	--	--	-----------

LEA : 123465303 Methacton SD

Printed 10/17/2017 3:10:46 PM

Amounts Expressed in Whole Dollars	<u>Private Purpose Trust</u> <u>(71)</u>	<u>Investment Trust</u> <u>(72)</u>	<u>Pension Trust</u> <u>(73)</u>	<u>Discrete Component</u> <u>Units</u> <u>(98)</u>	<u>Discrete Component</u> <u>Units</u> <u>(99)</u>	<u>Total Fiduciary</u> <u>Funds</u>
Additions						
0091 Gifts and Contributions	5,500					5,500
0092 Other Additions	165					165
Deductions						
0093 Scholarships Awarded	7,850					7,850
0094 Other Deductions						
Change In Net Position	(\$2,185)					(\$2,185)
0006 Net Position – Beginning of Fiscal Year	96,966					96,966
0007 Net Position Held in Trust for Pension Benefits						
Net Position - End of Fiscal Year	\$94,781					\$94,781

LEA : 123465303 Methacton SD

General Fund (10)

Printed 10/17/2017 3:10:47 PM

Page - 1 of 4

	Revenue Reported In Current Year	Current Year Tax Accrual	Prior Year Tax Accrual	Taxes Collected In Current Year
Revenue from Local Sources				
6111 Current Real Estate Taxes	68,721,765.91			68,721,765.91
6112 Interim Real Estate Taxes	641,025.21	8,067.48	2,668.12	635,625.85
6113 Public Utility Realty Taxes	85,786.39			85,786.39
6114 Payments in Lieu of Current Taxes - State / Local	56,216.41			56,216.41
6120 Current Per Capita Taxes, Section 679	89,357.23	37,310.64	38,082.68	90,129.27
6141 Current Act 511 Per Capita Taxes	89,357.18	37,310.63	38,082.67	90,129.22
6142 Current Act 511 Occupation Taxes - Flat Rate	104,571.40	2,978.55	10,598.18	112,191.03
6151 Current Act 511 Earned Income Taxes	7,008,785.89	145,978.50	155,776.64	7,018,584.03
6153 Current Act 511 Real Estate Transfer Taxes	971,741.06	206,006.23	198,951.40	964,686.23
6154 Current Act 511 Amusement Taxes	50,345.69	6,079.13	6,316.92	50,583.48
6411 Delinquent Real Estate Taxes	1,595,790.40	50,047.79	77,270.00	1,623,012.61
6420 Delinquent Per Capita Taxes, Section 679	20,121.74	5,398.36	4,621.41	19,344.79
6440 Delinquent Local Enabling Taxes - Flat Rate Assessments	20,121.68	5,398.35	4,621.40	19,344.73
6500 Earnings on Investments	148,214.68			
6700 Revenues from LEA Activities	225,589.95			
6831 Federal Revenue Received from Other Pennsylvania Public LEAs	25,761.47			
6832 Federal IDEA Revenue Received as Pass Through	882,887.24			
6910 Rentals	75,185.71			
6920 Contributions and Donations from Private Sources	747.58			
6942 Summer School Tuition	33,678.21			
6943 Adult Education Tuition	189,074.09			
6944 Receipts from Other LEAs in Pennsylvania - Education	339,430.00			
6991 Refunds of a Prior Year Expenditure	165,168.41			
6992 Energy Efficiency Revenues and Incentives	56,345.16			
6999 Other Revenues Not Specified Above	15,561.77			
TOTAL Revenue from Local Sources	\$81,612,630.46	\$504,575.66	\$536,989.42	\$79,487,399.95

	Revenue Reported In Current Year			
<u>Revenue from State Sources</u>				
7110 Basic Education Funding	6,692,150.12			
7160 Tuition for Orphans Subsidy	58,833.32			
7271 Special Education funds for School-Aged Pupils	2,577,612.03			
7311 Pupil Transportation Subsidy	1,661,442.64			
7312 Nonpublic and Charter School Pupil Transportation Subsidy	333,795.00			
7320 Rental and Sinking Fund Payments / Building Reimbursement Subsidy	883,289.36			
7330 Health Services (Medical, Dental, Nurse, Act 25)	87,944.64			
7340 State Property Tax Reduction Allocation	1,956,793.25			
7505 Ready to Learn Block Grant	267,328.00			
7810 State Share of Social Security and Medicare Taxes	1,532,184.26			
7820 State Share of Retirement Contributions	6,462,933.22			
TOTAL Revenue from State Sources	\$22,514,305.84			

		Revenue Reported In Current Year			
<u>Revenue from Federal Sources</u>					
8200	Unrestricted Grants-in-Aid from the Federal Government Through the Commonwealth of Pa	55,726.15			
8514	NCLB, Title I - Improving the Academic Achievement of the Disadvantaged	347,070.18			
8515	NCLB, Title II - Preparing, Training and Recruiting High Quality Teachers and Principals	95,298.49			
8810	School-Based Access Medicaid Reimbursement Program (SBAP) Reimbursements (Access)	155,000.00			
8820	Medical Assistance Reimbursement for Administrative Claiming (Quarterly) Program	13,128.57			
TOTAL Revenue from Federal Sources		\$666,223.39			

	Revenue Reported In Current Year			
<u>Other Financing Sources</u>				
9290 Other Extended-Term Financing Proceeds	16,711.56			
9330 Capital Projects Fund Transfers	871.95			
TOTAL Other Financing Sources	\$17,583.51			
TOTAL FROM ALL SOURCES	\$104,810,743.20	\$504,575.66	\$536,989.42	\$79,487,399.95

Revenue from Local Sources	81,612,630.46
Revenue from State Sources	22,514,305.84
Revenue from Federal Sources	666,223.39
Other Financing Sources	17,583.51
TOTAL FROM ALL SOURCES	\$104,810,743.20

LEA : 123465303 Methacton SD

Printed 10/17/2017 3:10:50 PM

General Fund (10)	
1000 Instruction	<u>Total</u>
100 <u>Personnel Services – Salaries</u>	
100 Personnel Services – Salaries	30,053,990.51
Total Personnel Services – Salaries	\$30,053,990.51
200 <u>Personnel Services – Employee Benefits</u>	
210 Group Insurance – Contracted Provider	57,606.52
220 Social Security Contributions	2,191,379.49
230 PSERS Retirement Contributions	9,017,831.99
250 Unemployment Compensation	23,763.87
260 Workers’ Compensation	291,068.50
270 Group Insurance – Self-Insurance	6,667,030.59
291 Other Retirement Plans	375,000.00
Total Personnel Services – Employee Benefits	\$18,623,680.96
300 <u>Purchased Professional and Technical Services</u>	
322 Professional Educational Services – Ius	1,056,004.43
323 Professional Educational Services – Other Educational Agencies	1,298.55
329 Professional Educational Services – Other	1,924,406.40
330 Other Professional Services	1,373,973.78
340 Technical Services	22,191.77
Total Purchased Professional and Technical Services	\$4,377,874.93
400 <u>Purchased Property Services</u>	
430 Repairs and Maintenance Services	22,941.88
440 Rentals	554,121.48
Total Purchased Property Services	\$577,063.36
500 <u>Other Purchased Services</u>	
510 Student Transportation Services	1,091.26
530 Communications	1,750.00
550 Printing and Binding	10,445.39
561 Tuition To Other School Districts Within the State	237,885.68
562 Tuition To Pennsylvania Charter Schools	1,106,073.48
563 Tuition To Nonpublic Schools	12,765.00
564 Tuition To Career and Technology Centers	1,307,029.70
566 Tuition To Institutions of Higher Education and Technical Institutes	6,000.00
567 Tuition To Approved Private Schools (APS) and PA Chartered Schools for the Deaf and Blind	387,985.55
568 Tuition To Private Residential Rehabilitative Institutions (PRRI) [In-State] and Detention Centers	340,100.05
569 Tuition – Other	17,538.00
580 Travel	9,762.59
Total Other Purchased Services	\$3,438,426.70
600 <u>Supplies</u>	
610 General Supplies	440,595.05
620 Energy	1,222.18
630 Food	1,810.20
640 Books and Periodicals	912,628.04
650 Supplies & Fees – Technology Related	196,434.09

LEA : 123465303 Methacton SD

Printed 10/17/2017 3:10:50 PM

General Fund (10)

1000 Instruction		<u>Total</u>
Total Supplies		\$1,552,689.56
700 <u>Property</u>		
752 Capital Equipment – Original and Additional		3,917.00
762 Capitalized Equipment - Replacement		16,711.56
Total Property		\$20,628.56
800 <u>Other Objects</u>		
810 Dues and Fees		3,277.95
820 Claims and Judgments Against the LEA		626,106.00
Total Other Objects		\$629,383.95
Total 1000 Instruction		\$59,273,738.53

LEA : 123465303 Methacton SD

Printed 10/17/2017 3:10:50 PM

General Fund (10)

1100 Regular Programs – Elementary / Secondary

	Elementary	Secondary	Federal	Total
100 <u>Personnel Services – Salaries</u>				
100 Personnel Services – Salaries	11,841,161.07	10,549,607.93	219,696.74	22,610,465.74
Total Personnel Services – Salaries	\$11,841,161.07	\$10,549,607.93	\$219,696.74	\$22,610,465.74
200 <u>Personnel Services – Employee Benefits</u>				
210 Group Insurance – Contracted Provider	21,264.58	21,264.58	83.00	42,612.16
220 Social Security Contributions	863,599.60	771,926.73	16,259.30	1,651,785.63
230 PSERS Retirement Contributions	3,575,189.46	3,161,188.89	64,947.38	6,801,325.73
250 Unemployment Compensation	14,673.48	9,090.39		23,763.87
260 Workers' Compensation	107,563.44	107,563.44		215,126.88
270 Group Insurance – Self-Insurance	2,453,648.53	2,453,648.54	20,263.00	4,927,560.07
291 Other Retirement Plans	191,250.00	183,750.00		375,000.00
Total Personnel Services – Employee Benefits	\$7,227,189.09	\$6,708,432.57	\$101,552.68	\$14,037,174.34
300 <u>Purchased Professional and Technical Services</u>				
322 Professional Educational Services – Ius	173,960.80	221,188.48		395,149.28
323 Professional Educational Services – Other Educational Agencies		1,298.55		1,298.55
329 Professional Educational Services – Other	642,286.84	506,864.32	10,047.82	1,159,198.98
330 Other Professional Services	2,361.20	9,201.70		11,562.90
Total Purchased Professional and Technical Services	\$818,608.84	\$738,553.05	\$10,047.82	\$1,567,209.71
400 <u>Purchased Property Services</u>				
430 Repairs and Maintenance Services	4,109.68	17,130.02		21,239.70
440 Rentals	547,596.00			547,596.00
Total Purchased Property Services	\$551,705.68	\$17,130.02		\$568,835.70
500 <u>Other Purchased Services</u>				
510 Student Transportation Services		1,091.26		1,091.26
550 Printing and Binding	747.59			747.59
561 Tuition To Other School Districts Within the State		4,873.32		4,873.32
562 Tuition To Pennsylvania Charter Schools	352,187.38	338,376.11		690,563.49
568 Tuition To Private Residential Rehabilitative Institutions (PRRI) [In-State] and Detention Centers		2,279.15		2,279.15
580 Travel	387.73	3,934.98		4,322.71
Total Other Purchased Services	\$353,322.70	\$350,554.82		\$703,877.52
600 <u>Supplies</u>				
610 General Supplies	138,378.16	230,325.15	12,581.46	381,284.77
630 Food	357.18	343.18		700.36
640 Books and Periodicals	752,945.16	105,595.90	14,711.21	873,252.27
650 Supplies & Fees – Technology Related	96,533.77	94,200.22	3,449.10	194,183.09
Total Supplies	\$988,214.27	\$430,464.45	\$30,741.77	\$1,449,420.49
700 <u>Property</u>				
752 Capital Equipment – Original and Additional		3,917.00		3,917.00
762 Capitalized Equipment - Replacement		16,711.56		16,711.56
Total Property		\$20,628.56		\$20,628.56
800 <u>Other Objects</u>				

LEA : 123465303 Methacton SD

Printed 10/17/2017 3:10:50 PM

General Fund (10)

1100 Regular Programs – Elementary / Secondary	<u>Elementary</u>	<u>Secondary</u>	<u>Federal</u>	<u>Total</u>
800 <u>Other Objects</u>				
810 Dues and Fees	48.42	3,229.53		3,277.95
820 Claims and Judgments Against the LEA		9,202.00		9,202.00
Total Other Objects	\$48.42	\$12,431.53		\$12,479.95
Total 1100 Regular Programs – Elementary / Secondary	\$21,780,250.07	\$18,827,802.93	\$362,039.01	\$40,970,092.01

LEA : 123465303 Methacton SD

Printed 10/17/2017 3:10:50 PM

General Fund (10)

1110 Regular Programs

	Elementary	Secondary	Federal	Total
100 <u>Personnel Services – Salaries</u>				
100 Personnel Services – Salaries	11,841,161.07	10,549,607.93	21,662.66	22,412,431.66
Total Personnel Services – Salaries	\$11,841,161.07	\$10,549,607.93	\$21,662.66	\$22,412,431.66
200 <u>Personnel Services – Employee Benefits</u>				
210 Group Insurance – Contracted Provider	21,264.58	21,264.58		42,529.16
220 Social Security Contributions	863,599.60	771,926.73	1,463.01	1,636,989.34
230 PSERS Retirement Contributions	3,575,189.46	3,161,188.89	6,505.18	6,742,883.53
250 Unemployment Compensation	14,673.48	9,090.39		23,763.87
260 Workers' Compensation	107,563.44	107,563.44		215,126.88
270 Group Insurance – Self-Insurance	2,453,648.53	2,453,648.54		4,907,297.07
291 Other Retirement Plans	191,250.00	183,750.00		375,000.00
Total Personnel Services – Employee Benefits	\$7,227,189.09	\$6,708,432.57	\$7,968.19	\$13,943,589.85
300 <u>Purchased Professional and Technical Services</u>				
322 Professional Educational Services – Ius	173,960.80	221,188.48		395,149.28
323 Professional Educational Services – Other Educational Agencies		1,298.55		1,298.55
329 Professional Educational Services – Other	642,286.84	506,864.32		1,149,151.16
330 Other Professional Services	2,361.20	9,201.70		11,562.90
Total Purchased Professional and Technical Services	\$818,608.84	\$738,553.05		\$1,557,161.89
400 <u>Purchased Property Services</u>				
430 Repairs and Maintenance Services	4,109.68	17,130.02		21,239.70
440 Rentals	547,596.00			547,596.00
Total Purchased Property Services	\$551,705.68	\$17,130.02		\$568,835.70
500 <u>Other Purchased Services</u>				
510 Student Transportation Services		1,091.26		1,091.26
550 Printing and Binding	747.59			747.59
561 Tuition To Other School Districts Within the State		4,873.32		4,873.32
562 Tuition To Pennsylvania Charter Schools	352,187.38	338,376.11		690,563.49
568 Tuition To Private Residential Rehabilitative Institutions (PRRI) [In-State] and Detention Centers		2,279.15		2,279.15
580 Travel	387.73	3,934.98		4,322.71
Total Other Purchased Services	\$353,322.70	\$350,554.82		\$703,877.52
600 <u>Supplies</u>				
610 General Supplies	138,378.16	230,325.15	4,787.09	373,490.40
630 Food	357.18	343.18		700.36
640 Books and Periodicals	752,945.16	105,595.90		858,541.06
650 Supplies & Fees – Technology Related	96,533.77	94,200.22		190,733.99
Total Supplies	\$988,214.27	\$430,464.45	\$4,787.09	\$1,423,465.81
700 <u>Property</u>				
752 Capital Equipment – Original and Additional		3,917.00		3,917.00
762 Capitalized Equipment - Replacement		16,711.56		16,711.56
Total Property		\$20,628.56		\$20,628.56
800 <u>Other Objects</u>				

LEA : 123465303 Methacton SD

Printed 10/17/2017 3:10:50 PM

General Fund (10)				
1110 Regular Programs	<u>Elementary</u>	<u>Secondary</u>	<u>Federal</u>	<u>Total</u>
800 <u>Other Objects</u>				
810 Dues and Fees	48.42	3,229.53		3,277.95
820 Claims and Judgments Against the LEA		9,202.00		9,202.00
Total Other Objects	\$48.42	\$12,431.53		\$12,479.95
Total 1110 Regular Programs	\$21,780,250.07	\$18,827,802.93	\$34,417.94	\$40,642,470.94

LEA : 123465303 Methacton SD

Printed 10/17/2017 3:10:50 PM

General Fund (10)				
1190 Federally-Funded Regular Programs	<u>Elementary</u>	<u>Secondary</u>	<u>Federal</u>	<u>Total</u>
100 <u>Personnel Services – Salaries</u>				
100 Personnel Services – Salaries			198,034.08	198,034.08
Total Personnel Services – Salaries			\$198,034.08	\$198,034.08
200 <u>Personnel Services – Employee Benefits</u>				
210 Group Insurance – Contracted Provider			83.00	83.00
220 Social Security Contributions			14,796.29	14,796.29
230 PSERS Retirement Contributions			58,442.20	58,442.20
270 Group Insurance – Self-Insurance			20,263.00	20,263.00
Total Personnel Services – Employee Benefits			\$93,584.49	\$93,584.49
300 <u>Purchased Professional and Technical Services</u>				
329 Professional Educational Services – Other			10,047.82	10,047.82
Total Purchased Professional and Technical Services			\$10,047.82	\$10,047.82
600 <u>Supplies</u>				
610 General Supplies			7,794.37	7,794.37
640 Books and Periodicals			14,711.21	14,711.21
650 Supplies & Fees – Technology Related			3,449.10	3,449.10
Total Supplies			\$25,954.68	\$25,954.68
Total 1190 Federally-Funded Regular Programs			\$327,621.07	\$327,621.07

LEA : 123465303 Methacton SD

Printed 10/17/2017 3:10:50 PM

General Fund (10)

1200 Special Programs – Elementary / Secondary	Elementary	Secondary	Federal	Total
100 Personnel Services – Salaries				
100 Personnel Services – Salaries	3,240,130.55	2,476,037.81	882,887.24	6,599,055.60
Total Personnel Services – Salaries	\$3,240,130.55	\$2,476,037.81	\$882,887.24	\$6,599,055.60
200 Personnel Services – Employee Benefits				
210 Group Insurance – Contracted Provider	6,637.50	6,637.50		13,275.00
220 Social Security Contributions	267,143.53	210,608.93		477,752.46
230 PSERS Retirement Contributions	1,102,890.33	860,881.15		1,963,771.48
260 Workers' Compensation	33,616.82	33,616.82		67,233.64
270 Group Insurance – Self-Insurance	770,005.59	770,005.59		1,540,011.18
Total Personnel Services – Employee Benefits	\$2,180,293.77	\$1,881,749.99		\$4,062,043.76
300 Purchased Professional and Technical Services				
322 Professional Educational Services – lus	246,093.66	389,314.39		635,408.05
329 Professional Educational Services – Other	477,748.68	283,874.96		761,623.64
330 Other Professional Services	888,523.51	350,356.97	18,539.78	1,257,420.26
340 Technical Services	11,317.80	10,873.97		22,191.77
Total Purchased Professional and Technical Services	\$1,623,683.65	\$1,034,420.29	\$18,539.78	\$2,676,643.72
500 Other Purchased Services				
561 Tuition To Other School Districts Within the State	16,580.00	112,889.78		129,469.78
562 Tuition To Pennsylvania Charter Schools	211,910.09	203,599.90		415,509.99
563 Tuition To Nonpublic Schools		12,765.00		12,765.00
564 Tuition To Career and Technology Centers		4,793.88		4,793.88
566 Tuition To Institutions of Higher Education and Technical Institutes		6,000.00		6,000.00
567 Tuition To Approved Private Schools (APS) and PA Chartered Schools for the Deaf and Blind	171,759.95	216,225.60		387,985.55
568 Tuition To Private Residential Rehabilitative Institutions (PRRI) [In-State] and Detention Centers		330,427.90		330,427.90
569 Tuition – Other		17,538.00		17,538.00
580 Travel	3,147.60	2,292.28		5,439.88
Total Other Purchased Services	\$403,397.64	\$906,532.34		\$1,309,929.98
600 Supplies				
610 General Supplies	27,308.83	7,071.82		34,380.65
630 Food	62.84			62.84
640 Books and Periodicals	37,157.14	1,786.43		38,943.57
650 Supplies & Fees – Technology Related			2,251.00	2,251.00
Total Supplies	\$64,528.81	\$8,858.25	\$2,251.00	\$75,638.06
800 Other Objects				
820 Claims and Judgments Against the LEA	62,324.00	554,580.00		616,904.00
Total Other Objects	\$62,324.00	\$554,580.00		\$616,904.00
Total 1200 Special Programs – Elementary / Secondary	\$7,574,358.42	\$6,862,178.68	\$903,678.02	\$15,340,215.12

LEA : 123465303 Methacton SD

Printed 10/17/2017 3:10:50 PM

General Fund (10)

1210 Life Skills Support

	Elementary	Secondary	Federal	Total
100 <u>Personnel Services – Salaries</u>				
100 Personnel Services – Salaries	51,859.04	288,121.08		339,980.12
Total Personnel Services – Salaries	\$51,859.04	\$288,121.08		\$339,980.12
200 <u>Personnel Services – Employee Benefits</u>				
220 Social Security Contributions	3,864.41	20,751.07		24,615.48
230 PSERS Retirement Contributions	15,380.02	86,497.45		101,877.47
Total Personnel Services – Employee Benefits	\$19,244.43	\$107,248.52		\$126,492.95
300 <u>Purchased Professional and Technical Services</u>				
322 Professional Educational Services – Ius	881.32	165,410.68		166,292.00
329 Professional Educational Services – Other	185,548.75	179,110.20		364,658.95
Total Purchased Professional and Technical Services	\$186,430.07	\$344,520.88		\$530,950.95
500 <u>Other Purchased Services</u>				
561 Tuition To Other School Districts Within the State		95,820.98		95,820.98
564 Tuition To Career and Technology Centers		4,793.88		4,793.88
580 Travel	480.00	1,311.03		1,791.03
Total Other Purchased Services	\$480.00	\$101,925.89		\$102,405.89
600 <u>Supplies</u>				
610 General Supplies		223.06		223.06
640 Books and Periodicals	169.00			169.00
Total Supplies	\$169.00	\$223.06		\$392.06
800 <u>Other Objects</u>				
820 Claims and Judgments Against the LEA		27,000.00		27,000.00
Total Other Objects		\$27,000.00		\$27,000.00
Total 1210 Life Skills Support	\$258,182.54	\$869,039.43		\$1,127,221.97

LEA : 123465303 Methacton SD

Printed 10/17/2017 3:10:50 PM

General Fund (10)

1220 Sensory Support	Elementary	Secondary	Federal	Total
100 <u>Personnel Services – Salaries</u>				
100 Personnel Services – Salaries	344,315.35	172,899.21		517,214.56
Total Personnel Services – Salaries	\$344,315.35	\$172,899.21		\$517,214.56
200 <u>Personnel Services – Employee Benefits</u>				
220 Social Security Contributions	25,701.55	12,839.76		38,541.31
230 PSERS Retirement Contributions	102,629.61	51,921.65		154,551.26
Total Personnel Services – Employee Benefits	\$128,331.16	\$64,761.41		\$193,092.57
300 <u>Purchased Professional and Technical Services</u>				
322 Professional Educational Services – Ius	62,329.88	89,832.40		152,162.28
330 Other Professional Services	3,594.25	30,956.15		34,550.40
Total Purchased Professional and Technical Services	\$65,924.13	\$120,788.55		\$186,712.68
500 <u>Other Purchased Services</u>				
568 Tuition To Private Residential Rehabilitative Institutions (PRRI) [In-State] and Detention Centers		2,273.28		2,273.28
Total Other Purchased Services		\$2,273.28		\$2,273.28
600 <u>Supplies</u>				
610 General Supplies	3,594.96	657.99		4,252.95
Total Supplies	\$3,594.96	\$657.99		\$4,252.95
Total 1220 Sensory Support	\$542,165.60	\$361,380.44		\$903,546.04

LEA : 123465303 Methacton SD

Printed 10/17/2017 3:10:50 PM

General Fund (10)

1230 Emotional Support	Elementary	Secondary	Federal	Total
100 Personnel Services – Salaries				
100 Personnel Services – Salaries	604,192.30	556,680.91	227,420.00	1,388,293.21
Total Personnel Services – Salaries	\$604,192.30	\$556,680.91	\$227,420.00	\$1,388,293.21
200 Personnel Services – Employee Benefits				
220 Social Security Contributions	55,118.88	44,616.18		99,735.06
230 PSERS Retirement Contributions	227,446.75	185,006.44		412,453.19
Total Personnel Services – Employee Benefits	\$282,565.63	\$229,622.62		\$512,188.25
300 Purchased Professional and Technical Services				
322 Professional Educational Services – Ius	22,168.62	92,979.89		115,148.51
329 Professional Educational Services – Other	234,380.80	97,731.29		332,112.09
330 Other Professional Services	884,569.26	315,050.82		1,199,620.08
Total Purchased Professional and Technical Services	\$1,141,118.68	\$505,762.00		\$1,646,880.68
500 Other Purchased Services				
561 Tuition To Other School Districts Within the State	16,580.00	15,618.80		32,198.80
563 Tuition To Nonpublic Schools		12,765.00		12,765.00
566 Tuition To Institutions of Higher Education and Technical Institutes		6,000.00		6,000.00
567 Tuition To Approved Private Schools (APS) and PA Chartered Schools for the Deaf and Blind		30,618.00		30,618.00
568 Tuition To Private Residential Rehabilitative Institutions (PRRI) [In-State] and Detention Centers		275,786.30		275,786.30
580 Travel	794.85			794.85
Total Other Purchased Services	\$17,374.85	\$340,788.10		\$358,162.95
600 Supplies				
610 General Supplies	10,162.59	4,751.98		14,914.57
640 Books and Periodicals	1,989.96	925.98		2,915.94
Total Supplies	\$12,152.55	\$5,677.96		\$17,830.51
800 Other Objects				
820 Claims and Judgments Against the LEA		91,000.00		91,000.00
Total Other Objects		\$91,000.00		\$91,000.00
Total 1230 Emotional Support	\$2,057,404.01	\$1,729,531.59	\$227,420.00	\$4,014,355.60

LEA : 123465303 Methacton SD

Printed 10/17/2017 3:10:50 PM

General Fund (10)

1240 Academic Support

	Elementary	Secondary	Federal	Total
100 <u>Personnel Services – Salaries</u>				
100 Personnel Services – Salaries	1,688,247.71	912,009.49	545,155.24	3,145,412.44
Total Personnel Services – Salaries	\$1,688,247.71	\$912,009.49	\$545,155.24	\$3,145,412.44
200 <u>Personnel Services – Employee Benefits</u>				
210 Group Insurance – Contracted Provider	6,637.50	6,637.50		13,275.00
220 Social Security Contributions	143,057.99	83,875.22		226,933.21
230 PSERS Retirement Contributions	595,174.80	344,524.73		939,699.53
260 Workers' Compensation	33,616.82	33,616.82		67,233.64
270 Group Insurance – Self-Insurance	770,005.59	770,005.59		1,540,011.18
Total Personnel Services – Employee Benefits	\$1,548,492.70	\$1,238,659.86		\$2,787,152.56
300 <u>Purchased Professional and Technical Services</u>				
322 Professional Educational Services – lus	13,244.97	41,091.42		54,336.39
329 Professional Educational Services – Other	54,054.00	3,416.00		57,470.00
330 Other Professional Services	360.00	4,350.00		4,710.00
Total Purchased Professional and Technical Services	\$67,658.97	\$48,857.42		\$116,516.39
500 <u>Other Purchased Services</u>				
561 Tuition To Other School Districts Within the State		1,450.00		1,450.00
562 Tuition To Pennsylvania Charter Schools	211,910.09	203,599.90		415,509.99
568 Tuition To Private Residential Rehabilitative Institutions (PRRI) [In-State] and Detention Centers		52,368.32		52,368.32
569 Tuition – Other		17,538.00		17,538.00
580 Travel	1,870.27	981.25		2,851.52
Total Other Purchased Services	\$213,780.36	\$275,937.47		\$489,717.83
600 <u>Supplies</u>				
610 General Supplies	13,551.28	1,438.79		14,990.07
630 Food	62.84			62.84
640 Books and Periodicals	34,998.18	860.45		35,858.63
Total Supplies	\$48,612.30	\$2,299.24		\$50,911.54
800 <u>Other Objects</u>				
820 Claims and Judgments Against the LEA	62,324.00	319,950.00		382,274.00
Total Other Objects	\$62,324.00	\$319,950.00		\$382,274.00
Total 1240 Academic Support	\$3,629,116.04	\$2,797,713.48	\$545,155.24	\$6,971,984.76

LEA : 123465303 Methacton SD

Printed 10/17/2017 3:10:50 PM

General Fund (10)

1241 Learning Support – Public	Elementary	Secondary	Federal	Total
100 <u>Personnel Services – Salaries</u>				
100 Personnel Services – Salaries	1,270,441.02	672,719.13	545,155.24	2,488,315.39
Total Personnel Services – Salaries	\$1,270,441.02	\$672,719.13	\$545,155.24	\$2,488,315.39
200 <u>Personnel Services – Employee Benefits</u>				
210 Group Insurance – Contracted Provider	6,637.50	6,637.50		13,275.00
220 Social Security Contributions	112,958.51	65,980.70		178,939.21
230 PSERS Retirement Contributions	470,057.64	273,287.31		743,344.95
260 Workers' Compensation	33,616.82	33,616.82		67,233.64
270 Group Insurance – Self-Insurance	770,005.59	770,005.59		1,540,011.18
Total Personnel Services – Employee Benefits	\$1,393,276.06	\$1,149,527.92		\$2,542,803.98
300 <u>Purchased Professional and Technical Services</u>				
322 Professional Educational Services – lus	13,244.97	41,091.42		54,336.39
329 Professional Educational Services – Other	54,054.00	3,416.00		57,470.00
330 Other Professional Services	360.00	4,350.00		4,710.00
Total Purchased Professional and Technical Services	\$67,658.97	\$48,857.42		\$116,516.39
500 <u>Other Purchased Services</u>				
561 Tuition To Other School Districts Within the State		1,450.00		1,450.00
562 Tuition To Pennsylvania Charter Schools	211,910.09	203,599.90		415,509.99
568 Tuition To Private Residential Rehabilitative Institutions (PRRI) [In-State] and Detention Centers		210.00		210.00
569 Tuition – Other		17,538.00		17,538.00
580 Travel	1,870.27	923.29		2,793.56
Total Other Purchased Services	\$213,780.36	\$223,721.19		\$437,501.55
600 <u>Supplies</u>				
610 General Supplies	10,766.73	1,306.88		12,073.61
630 Food	62.84			62.84
640 Books and Periodicals	34,998.18	268.88		35,267.06
Total Supplies	\$45,827.75	\$1,575.76		\$47,403.51
800 <u>Other Objects</u>				
820 Claims and Judgments Against the LEA	62,324.00	319,950.00		382,274.00
Total Other Objects	\$62,324.00	\$319,950.00		\$382,274.00
Total 1241 Learning Support – Public	\$3,053,308.16	\$2,416,351.42	\$545,155.24	\$6,014,814.82

LEA : 123465303 Methacton SD

Printed 10/17/2017 3:10:50 PM

General Fund (10)

1242 Learning Support – PRRI

<u>Elementary</u>	<u>Secondary</u>	<u>Federal</u>	<u>Total</u>
-------------------	------------------	----------------	--------------

500 Other Purchased Services

568 Tuition To Private Residential Rehabilitative Institutions (PRRI) [In-State] and Detention Centers	52,158.32		52,158.32
--	-----------	--	-----------

Total Other Purchased Services	\$52,158.32		\$52,158.32
---------------------------------------	--------------------	--	--------------------

Total 1242 Learning Support – PRRI	\$52,158.32		\$52,158.32
---	--------------------	--	--------------------

LEA : 123465303 Methacton SD

Printed 10/17/2017 3:10:50 PM

General Fund (10)				
1243 Gifted Support	<u>Elementary</u>	<u>Secondary</u>	<u>Federal</u>	<u>Total</u>
100 <u>Personnel Services – Salaries</u>				
100 Personnel Services – Salaries	417,806.69	239,290.36		657,097.05
Total Personnel Services – Salaries	\$417,806.69	\$239,290.36		\$657,097.05
200 <u>Personnel Services – Employee Benefits</u>				
220 Social Security Contributions	30,099.48	17,894.52		47,994.00
230 PSERS Retirement Contributions	125,117.16	71,237.42		196,354.58
Total Personnel Services – Employee Benefits	\$155,216.64	\$89,131.94		\$244,348.58
500 <u>Other Purchased Services</u>				
580 Travel		57.96		57.96
Total Other Purchased Services		\$57.96		\$57.96
600 <u>Supplies</u>				
610 General Supplies	2,784.55	131.91		2,916.46
640 Books and Periodicals		591.57		591.57
Total Supplies	\$2,784.55	\$723.48		\$3,508.03
Total 1243 Gifted Support	\$575,807.88	\$329,203.74		\$905,011.62

LEA : 123465303 Methacton SD

Printed 10/17/2017 3:10:50 PM

General Fund (10)

1260 Physical Support

	<u>Elementary</u>	<u>Secondary</u>	<u>Federal</u>	<u>Total</u>
300 <u>Purchased Professional and Technical Services</u>				
330 Other Professional Services			18,539.78	18,539.78
Total Purchased Professional and Technical Services			\$18,539.78	\$18,539.78
Total 1260 Physical Support			\$18,539.78	\$18,539.78

LEA : 123465303 Methacton SD

Printed 10/17/2017 3:10:50 PM

General Fund (10)

1270 Multi-Handicapped Support	<u>Elementary</u>	<u>Secondary</u>	<u>Federal</u>	<u>Total</u>
300 <u>Purchased Professional and Technical Services</u>				
322 Professional Educational Services – Ius	88,218.73			88,218.73
Total Purchased Professional and Technical Services	\$88,218.73			\$88,218.73
500 <u>Other Purchased Services</u>				
567 Tuition To Approved Private Schools (APS) and PA Chartered Schools for the Deaf and Blind		4,050.00		4,050.00
Total Other Purchased Services		\$4,050.00		\$4,050.00
800 <u>Other Objects</u>				
820 Claims and Judgments Against the LEA		116,630.00		116,630.00
Total Other Objects		\$116,630.00		\$116,630.00
Total 1270 Multi-Handicapped Support	\$88,218.73	\$120,680.00		\$208,898.73

LEA : 123465303 Methacton SD

Printed 10/17/2017 3:10:50 PM

General Fund (10)

1280 Early Intervention Support	<u>Elementary</u>	<u>Secondary</u>	<u>Federal</u>	<u>Total</u>
300 <u>Purchased Professional and Technical Services</u>				
322 Professional Educational Services – lus	59,250.14			59,250.14
Total Purchased Professional and Technical Services	\$59,250.14			\$59,250.14
600 <u>Supplies</u>				
650 Supplies & Fees – Technology Related			2,251.00	2,251.00
Total Supplies			\$2,251.00	\$2,251.00
Total 1280 Early Intervention Support	\$59,250.14		\$2,251.00	\$61,501.14

LEA : 123465303 Methacton SD

Printed 10/17/2017 3:10:50 PM

General Fund (10)

1290 Special Programs - Other Support	<u>Elementary</u>	<u>Secondary</u>	<u>Federal</u>	<u>Total</u>
100 <u>Personnel Services – Salaries</u>				
100 Personnel Services – Salaries	551,516.15	546,327.12	110,312.00	1,208,155.27
Total Personnel Services – Salaries	\$551,516.15	\$546,327.12	\$110,312.00	\$1,208,155.27
200 <u>Personnel Services – Employee Benefits</u>				
220 Social Security Contributions	39,400.70	48,526.70		87,927.40
230 PSERS Retirement Contributions	162,259.15	192,930.88		355,190.03
Total Personnel Services – Employee Benefits	\$201,659.85	\$241,457.58		\$443,117.43
300 <u>Purchased Professional and Technical Services</u>				
329 Professional Educational Services – Other	3,765.13	3,617.47		7,382.60
340 Technical Services	11,317.80	10,873.97		22,191.77
Total Purchased Professional and Technical Services	\$15,082.93	\$14,491.44		\$29,574.37
500 <u>Other Purchased Services</u>				
567 Tuition To Approved Private Schools (APS) and PA Chartered Schools for the Deaf and Blind	171,759.95	181,557.60		353,317.55
580 Travel	2.48			2.48
Total Other Purchased Services	\$171,762.43	\$181,557.60		\$353,320.03
Total 1290 Special Programs - Other Support	\$940,021.36	\$983,833.74	\$110,312.00	\$2,034,167.10

LEA : 123465303 Methacton SD

Printed 10/17/2017 3:10:50 PM

General Fund (10)

1300 Vocational Education

	<u>Elementary</u>	<u>Secondary</u>	<u>Federal</u>	<u>Total</u>
100 <u>Personnel Services – Salaries</u>				
100 Personnel Services – Salaries		690,378.75		690,378.75
Total Personnel Services – Salaries		\$690,378.75		\$690,378.75
200 <u>Personnel Services – Employee Benefits</u>				
210 Group Insurance – Contracted Provider		1,474.55		1,474.55
220 Social Security Contributions		50,338.30		50,338.30
230 PSERS Retirement Contributions		211,502.32		211,502.32
260 Workers' Compensation		7,468.09		7,468.09
270 Group Insurance – Self-Insurance		171,059.28		171,059.28
Total Personnel Services – Employee Benefits		\$441,842.54		\$441,842.54
400 <u>Purchased Property Services</u>				
430 Repairs and Maintenance Services		905.00		905.00
Total Purchased Property Services		\$905.00		\$905.00
500 <u>Other Purchased Services</u>				
564 Tuition To Career and Technology Centers		1,302,235.82		1,302,235.82
Total Other Purchased Services		\$1,302,235.82		\$1,302,235.82
600 <u>Supplies</u>				
610 General Supplies		21,590.22		21,590.22
640 Books and Periodicals		432.20		432.20
Total Supplies		\$22,022.42		\$22,022.42
Total 1300 Vocational Education		\$2,457,384.53		\$2,457,384.53

LEA : 123465303 Methacton SD

Printed 10/17/2017 3:10:50 PM

General Fund (10)

1400 Other Instructional Programs – Elementary / Secondary	<u>Elementary</u>	<u>Secondary</u>	<u>Federal</u>	<u>Total</u>
100 <u>Personnel Services – Salaries</u>				
100 Personnel Services – Salaries		130,094.92		130,094.92
Total Personnel Services – Salaries		\$130,094.92		\$130,094.92
200 <u>Personnel Services – Employee Benefits</u>				
210 Group Insurance – Contracted Provider		244.81		244.81
220 Social Security Contributions		9,666.90		9,666.90
230 PSERS Retirement Contributions		38,453.05		38,453.05
260 Workers' Compensation		1,239.89		1,239.89
270 Group Insurance – Self-Insurance		28,400.06		28,400.06
Total Personnel Services – Employee Benefits		\$78,004.71		\$78,004.71
300 <u>Purchased Professional and Technical Services</u>				
322 Professional Educational Services – lus		24,165.00		24,165.00
329 Professional Educational Services – Other	81.62	3,502.16		3,583.78
Total Purchased Professional and Technical Services	\$81.62	\$27,667.16		\$27,748.78
400 <u>Purchased Property Services</u>				
430 Repairs and Maintenance Services		797.18		797.18
440 Rentals		6,525.48		6,525.48
Total Purchased Property Services		\$7,322.66		\$7,322.66
500 <u>Other Purchased Services</u>				
561 Tuition To Other School Districts Within the State	52,806.72	50,735.86		103,542.58
568 Tuition To Private Residential Rehabilitative Institutions (PRRI) [In-State] and Detention Centers		7,393.00		7,393.00
Total Other Purchased Services	\$52,806.72	\$58,128.86		\$110,935.58
600 <u>Supplies</u>				
620 Energy		1,222.18		1,222.18
Total Supplies		\$1,222.18		\$1,222.18
Total 1400 Other Instructional Programs – Elementary / Secondary	\$52,888.34	\$302,440.49		\$355,328.83

LEA : 123465303 Methacton SD

Printed 10/17/2017 3:10:50 PM

General Fund (10)

1410 Drivers' Education

	Elementary	Secondary	Federal	Total
100 <u>Personnel Services – Salaries</u>				
100 Personnel Services – Salaries		114,655.49		114,655.49
Total Personnel Services – Salaries		\$114,655.49		\$114,655.49
200 <u>Personnel Services – Employee Benefits</u>				
210 Group Insurance – Contracted Provider		244.81		244.81
220 Social Security Contributions		8,485.82		8,485.82
230 PSERS Retirement Contributions		33,816.68		33,816.68
260 Workers' Compensation		1,239.89		1,239.89
270 Group Insurance – Self-Insurance		28,400.06		28,400.06
Total Personnel Services – Employee Benefits		\$72,187.26		\$72,187.26
400 <u>Purchased Property Services</u>				
430 Repairs and Maintenance Services		797.18		797.18
440 Rentals		6,525.48		6,525.48
Total Purchased Property Services		\$7,322.66		\$7,322.66
600 <u>Supplies</u>				
620 Energy		1,222.18		1,222.18
Total Supplies		\$1,222.18		\$1,222.18
Total 1410 Drivers' Education		\$195,387.59		\$195,387.59

LEA : 123465303 Methacton SD

Printed 10/17/2017 3:10:50 PM

General Fund (10)

1420 Summer School

	<u>Elementary</u>	<u>Secondary</u>	<u>Federal</u>	<u>Total</u>
100 <u>Personnel Services – Salaries</u>				
100 Personnel Services – Salaries		9,007.36		9,007.36
Total Personnel Services – Salaries		\$9,007.36		\$9,007.36
200 <u>Personnel Services – Employee Benefits</u>				
220 Social Security Contributions		689.05		689.05
230 PSERS Retirement Contributions		2,704.89		2,704.89
Total Personnel Services – Employee Benefits		\$3,393.94		\$3,393.94
300 <u>Purchased Professional and Technical Services</u>				
322 Professional Educational Services – Ius		24,165.00		24,165.00
Total Purchased Professional and Technical Services		\$24,165.00		\$24,165.00
Total 1420 Summer School		\$36,566.30		\$36,566.30

LEA : 123465303 Methacton SD

Printed 10/17/2017 3:10:50 PM

General Fund (10)

1430 Homebound Instruction	<u>Elementary</u>	<u>Secondary</u>	<u>Federal</u>	<u>Total</u>
100 <u>Personnel Services – Salaries</u>				
100 Personnel Services – Salaries		6,432.07		6,432.07
Total Personnel Services – Salaries		\$6,432.07		\$6,432.07
200 <u>Personnel Services – Employee Benefits</u>				
220 Social Security Contributions		492.03		492.03
230 PSERS Retirement Contributions		1,931.48		1,931.48
Total Personnel Services – Employee Benefits		\$2,423.51		\$2,423.51
300 <u>Purchased Professional and Technical Services</u>				
329 Professional Educational Services – Other	81.62	3,502.16		3,583.78
Total Purchased Professional and Technical Services	\$81.62	\$3,502.16		\$3,583.78
Total 1430 Homebound Instruction	\$81.62	\$12,357.74		\$12,439.36

LEA : 123465303 Methacton SD

Printed 10/17/2017 3:10:50 PM

General Fund (10)

1440 Alternative Regular Education Programs	<u>Elementary</u>	<u>Secondary</u>	<u>Federal</u>	<u>Total</u>
500 <u>Other Purchased Services</u>				
561 Tuition To Other School Districts Within the State	52,806.72	50,735.86		103,542.58
568 Tuition To Private Residential Rehabilitative Institutions (PRRI) [In-State] and Detention Centers		7,393.00		7,393.00
Total Other Purchased Services	\$52,806.72	\$58,128.86		\$110,935.58
Total 1440 Alternative Regular Education Programs	\$52,806.72	\$58,128.86		\$110,935.58

LEA : 123465303 Methacton SD

Printed 10/17/2017 3:10:50 PM

General Fund (10)

1441 Adjudicated / Court-Placed Programs	<u>Elementary</u>	<u>Secondary</u>	<u>Federal</u>	<u>Total</u>
500 <u>Other Purchased Services</u>				
561 Tuition To Other School Districts Within the State	52,806.72	50,735.86		103,542.58
568 Tuition To Private Residential Rehabilitative Institutions (PRRI) [In-State] and Detention Centers		7,393.00		7,393.00
Total Other Purchased Services	\$52,806.72	\$58,128.86		\$110,935.58
Total 1441 Adjudicated / Court-Placed Programs	\$52,806.72	\$58,128.86		\$110,935.58

LEA : 123465303 Methacton SD

Printed 10/17/2017 3:10:50 PM

General Fund (10)

1500 Nonpublic School Programs

Elementary Secondary Federal Total

300 Purchased Professional and Technical Services

322 Professional Educational Services – lus 1,282.10 1,282.10

Total Purchased Professional and Technical Services \$1,282.10 \$1,282.10

Total 1500 Nonpublic School Programs \$1,282.10 \$1,282.10

LEA : 123465303 Methacton SD

Printed 10/17/2017 3:10:50 PM

General Fund (10)

1600 Adult Education Programs	<u>Elementary</u>	<u>Secondary</u>	<u>Federal</u>	<u>Total</u>
100 <u>Personnel Services – Salaries</u>				
100 Personnel Services – Salaries				23,995.50
Total Personnel Services – Salaries				\$23,995.50
200 <u>Personnel Services – Employee Benefits</u>				
220 Social Security Contributions				1,836.20
230 PSERS Retirement Contributions				2,779.41
Total Personnel Services – Employee Benefits				\$4,615.61
300 <u>Purchased Professional and Technical Services</u>				
330 Other Professional Services				104,990.62
Total Purchased Professional and Technical Services				\$104,990.62
500 <u>Other Purchased Services</u>				
530 Communications				1,750.00
550 Printing and Binding				9,697.80
Total Other Purchased Services				\$11,447.80
600 <u>Supplies</u>				
610 General Supplies				3,339.41
630 Food				1,047.00
Total Supplies				\$4,386.41
Total 1600 Adult Education Programs				\$149,435.94

LEA : 123465303 Methacton SD

Printed 10/17/2017 3:10:53 PM

General Fund (10)

2000 Support Services

	Total
100 Personnel Services – Salaries	
100 Personnel Services – Salaries	12,592,514.64
Total Personnel Services – Salaries	\$12,592,514.64
200 Personnel Services – Employee Benefits	
210 Group Insurance – Contracted Provider	27,413.79
220 Social Security Contributions	905,802.26
230 PSERS Retirement Contributions	3,702,420.83
240 Tuition Reimbursement	275,510.19
260 Workers' Compensation	137,990.51
270 Group Insurance – Self-Insurance	3,090,323.71
299 All Other Employee Benefits	26,876.01
Total Personnel Services – Employee Benefits	\$8,166,337.30
300 Purchased Professional and Technical Services	
310 Official / Administrative Services	135,212.92
322 Professional Educational Services – Ius	26,644.37
323 Professional Educational Services – Other Educational Agencies	55,887.44
324 Professional Educational Services – Employee Training and Development Services	112.57
330 Other Professional Services	1,376,397.49
340 Technical Services	3,243.40
390 Other Purchased Professional and Technical Services	248,649.83
Total Purchased Professional and Technical Services	\$1,846,148.02
400 Purchased Property Services	
410 Cleaning Services	111,771.14
420 Utility Services	192,705.86
430 Repairs and Maintenance Services	564,965.41
440 Rentals	265,724.93
450 Construction Services	11,652.94
460 Extermination Services	7,739.25
490 Other Purchased Property Services	7,991.00
Total Purchased Property Services	\$1,162,550.53
500 Other Purchased Services	
510 Student Transportation Services	146.02
511 Student Transportation Services from Another LEA Within the State	15,790.00
513 Contracted Carriers	6,152,510.86
516 Student Transportation Services From the IU	344,537.48
519 Student Transportation Services From Other Sources	3,600.00
520 Insurance – General	247,156.70
530 Communications	155,739.81
549 Other Advertising/Public Relations	2,803.38
550 Printing and Binding	24,512.29
580 Travel	42,544.25
591 Services Purchased Locally	400.00
595 IU Payments By Withholding	69,414.01
596 Direct Payments To Intermediate Units	5,326.00

LEA : 123465303 Methacton SD

Printed 10/17/2017 3:10:53 PM

General Fund (10)

2000 Support Services

	Total
Total Other Purchased Services	\$7,064,480.80
600 <u>Supplies</u>	
610 General Supplies	881,436.10
620 Energy	1,188,867.18
630 Food	4,641.79
640 Books and Periodicals	51,320.27
650 Supplies & Fees – Technology Related	295.00
Total Supplies	\$2,126,560.34
700 <u>Property</u>	
752 Capital Equipment – Original and Additional	95,183.84
762 Capitalized Equipment - Replacement	28,578.20
Total Property	\$123,762.04
800 <u>Other Objects</u>	
810 Dues and Fees	69,456.46
890 Miscellaneous Expenditures	(4,423.46)
Total Other Objects	\$65,033.00
Total 2000 Support Services	\$33,147,386.67

LEA : 123465303 Methacton SD

Printed 10/17/2017 3:10:53 PM

General Fund (10)

2100 Support Services – Students	Elementary	Secondary	Federal	Total
100 <u>Personnel Services – Salaries</u>				
100 Personnel Services – Salaries	1,018,864.56	1,290,987.24		2,446,413.18
Total Personnel Services – Salaries	\$1,018,864.56	\$1,290,987.24		\$2,446,413.18
200 <u>Personnel Services – Employee Benefits</u>				
210 Group Insurance – Contracted Provider	3,164.89	3,040.76		6,205.65
220 Social Security Contributions	74,114.80	93,561.44		177,543.66
230 PSERS Retirement Contributions	303,530.60	378,932.25		722,746.03
260 Workers' Compensation	15,128.58	14,535.29		29,663.87
270 Group Insurance – Self-Insurance	342,781.10	329,338.70		672,119.80
299 All Other Employee Benefits	2,478.62	1,454.29		3,932.91
Total Personnel Services – Employee Benefits	\$741,198.59	\$820,862.73		\$1,612,211.92
300 <u>Purchased Professional and Technical Services</u>				
322 Professional Educational Services – Ius		218.15		218.15
330 Other Professional Services	4,721.17	119,265.76		269,411.93
Total Purchased Professional and Technical Services	\$4,721.17	\$119,483.91		\$269,630.08
500 <u>Other Purchased Services</u>				
510 Student Transportation Services		146.02		146.02
580 Travel	2,062.97	1,138.40		3,712.37
Total Other Purchased Services	\$2,062.97	\$1,284.42		\$3,858.39
600 <u>Supplies</u>				
610 General Supplies	9,775.27	11,048.48		20,823.75
630 Food		210.00		210.00
640 Books and Periodicals	1,111.90	567.90		1,679.80
Total Supplies	\$10,887.17	\$11,826.38		\$22,713.55
800 <u>Other Objects</u>				
810 Dues and Fees	216.75	726.25		1,003.00
890 Miscellaneous Expenditures		(4,423.46)		(4,423.46)
Total Other Objects	\$216.75	(\$3,697.21)		(\$3,420.46)
Total 2100 Support Services – Students	\$1,777,951.21	\$2,240,747.47		\$4,351,406.66

LEA : 123465303 Methacton SD

Printed 10/17/2017 3:10:53 PM

General Fund (10)

2110 Supervision of Student Services	Elementary	Secondary	Federal	Total
100 <u>Personnel Services – Salaries</u>				
100 Personnel Services – Salaries	314,129.85	323,354.42		637,484.27
Total Personnel Services – Salaries	\$314,129.85	\$323,354.42		\$637,484.27
200 <u>Personnel Services – Employee Benefits</u>				
210 Group Insurance – Contracted Provider	716.09	687.99		1,404.08
220 Social Security Contributions	22,534.56	23,298.94		45,833.50
230 PSERS Retirement Contributions	92,474.01	88,847.57		181,321.58
260 Workers' Compensation	2,726.20	2,619.28		5,345.48
270 Group Insurance – Self-Insurance	58,700.11	56,398.15		115,098.26
299 All Other Employee Benefits	2,478.62	1,454.29		3,932.91
Total Personnel Services – Employee Benefits	\$179,629.59	\$173,306.22		\$352,935.81
300 <u>Purchased Professional and Technical Services</u>				
322 Professional Educational Services – Ius		218.15		218.15
330 Other Professional Services	4,721.17	4,536.03		9,257.20
Total Purchased Professional and Technical Services	\$4,721.17	\$4,754.18		\$9,475.35
500 <u>Other Purchased Services</u>				
580 Travel	2,005.10	1,025.53		3,030.63
Total Other Purchased Services	\$2,005.10	\$1,025.53		\$3,030.63
600 <u>Supplies</u>				
610 General Supplies	361.73	233.08		594.81
Total Supplies	\$361.73	\$233.08		\$594.81
800 <u>Other Objects</u>				
810 Dues and Fees	216.75	388.25		605.00
Total Other Objects	\$216.75	\$388.25		\$605.00
Total 2110 Supervision of Student Services	\$501,064.19	\$503,061.68		\$1,004,125.87

LEA : 123465303 Methacton SD

Printed 10/17/2017 3:10:53 PM

General Fund (10)				
2111 Supervision of Student Services – Head of Component	<u>Elementary</u>	<u>Secondary</u>	<u>Federal</u>	<u>Total</u>
100 <u>Personnel Services – Salaries</u>				
100 Personnel Services – Salaries	120,271.99	115,555.45		235,827.44
Total Personnel Services – Salaries	\$120,271.99	\$115,555.45		\$235,827.44
200 <u>Personnel Services – Employee Benefits</u>				
210 Group Insurance – Contracted Provider	215.00	206.56		421.56
220 Social Security Contributions	8,266.81	7,942.63		16,209.44
230 PSERS Retirement Contributions	35,569.53	34,174.64		69,744.17
260 Workers' Compensation	1,168.37	1,122.55		2,290.92
270 Group Insurance – Self-Insurance	21,721.96	20,870.12		42,592.08
299 All Other Employee Benefits	498.62	479.06		977.68
Total Personnel Services – Employee Benefits	\$67,440.29	\$64,795.56		\$132,235.85
300 <u>Purchased Professional and Technical Services</u>				
330 Other Professional Services	4,721.17	4,536.03		9,257.20
Total Purchased Professional and Technical Services	\$4,721.17	\$4,536.03		\$9,257.20
500 <u>Other Purchased Services</u>				
580 Travel		830.53		830.53
Total Other Purchased Services		\$830.53		\$830.53
600 <u>Supplies</u>				
610 General Supplies	361.73	233.08		594.81
Total Supplies	\$361.73	\$233.08		\$594.81
800 <u>Other Objects</u>				
810 Dues and Fees	216.75	388.25		605.00
Total Other Objects	\$216.75	\$388.25		\$605.00
Total 2111 Supervision of Student Services – Head of Component	\$193,011.93	\$186,338.90		\$379,350.83

LEA : 123465303 Methacton SD

Printed 10/17/2017 3:10:53 PM

General Fund (10)

2119 Supervision of Student Services – All Other Supervision	Elementary	Secondary	Federal	Total
100 <u>Personnel Services – Salaries</u>				
100 Personnel Services – Salaries	193,857.86	207,798.97		401,656.83
Total Personnel Services – Salaries	\$193,857.86	\$207,798.97		\$401,656.83
200 <u>Personnel Services – Employee Benefits</u>				
210 Group Insurance – Contracted Provider	501.09	481.43		982.52
220 Social Security Contributions	14,267.75	15,356.31		29,624.06
230 PSERS Retirement Contributions	56,904.48	54,672.93		111,577.41
260 Workers' Compensation	1,557.83	1,496.73		3,054.56
270 Group Insurance – Self-Insurance	36,978.15	35,528.03		72,506.18
299 All Other Employee Benefits	1,980.00	975.23		2,955.23
Total Personnel Services – Employee Benefits	\$112,189.30	\$108,510.66		\$220,699.96
300 <u>Purchased Professional and Technical Services</u>				
322 Professional Educational Services – Ius		218.15		218.15
Total Purchased Professional and Technical Services		\$218.15		\$218.15
500 <u>Other Purchased Services</u>				
580 Travel	2,005.10	195.00		2,200.10
Total Other Purchased Services	\$2,005.10	\$195.00		\$2,200.10
Total 2119 Supervision of Student Services – All Other Supervision	\$308,052.26	\$316,722.78		\$624,775.04

LEA : 123465303 Methacton SD

Printed 10/17/2017 3:10:53 PM

General Fund (10)

2120 Guidance Services	Elementary	Secondary	Federal	Total
100 <u>Personnel Services – Salaries</u>				
100 Personnel Services – Salaries	560,682.71	809,362.82		1,370,045.53
Total Personnel Services – Salaries	\$560,682.71	\$809,362.82		\$1,370,045.53
200 <u>Personnel Services – Employee Benefits</u>				
210 Group Insurance – Contracted Provider	2,448.80	2,352.77		4,801.57
220 Social Security Contributions	41,175.92	58,751.31		99,927.23
230 PSERS Retirement Contributions	167,797.85	242,683.88		410,481.73
260 Workers' Compensation	12,402.38	11,916.01		24,318.39
270 Group Insurance – Self-Insurance	284,080.99	272,940.55		557,021.54
Total Personnel Services – Employee Benefits	\$507,905.94	\$588,644.52		\$1,096,550.46
300 <u>Purchased Professional and Technical Services</u>				
330 Other Professional Services		9,934.00		9,934.00
Total Purchased Professional and Technical Services		\$9,934.00		\$9,934.00
500 <u>Other Purchased Services</u>				
510 Student Transportation Services		146.02		146.02
Total Other Purchased Services		\$146.02		\$146.02
600 <u>Supplies</u>				
610 General Supplies	2,408.02	638.08		3,046.10
630 Food		210.00		210.00
640 Books and Periodicals	1,111.90	219.00		1,330.90
Total Supplies	\$3,519.92	\$1,067.08		\$4,587.00
800 <u>Other Objects</u>				
810 Dues and Fees		338.00		338.00
890 Miscellaneous Expenditures		(4,423.46)		(4,423.46)
Total Other Objects		(\$4,085.46)		(\$4,085.46)
Total 2120 Guidance Services	\$1,072,108.57	\$1,405,068.98		\$2,477,177.55

LEA : 123465303 Methacton SD

Printed 10/17/2017 3:10:53 PM

General Fund (10)

2130 Attendance Services

	<u>Elementary</u>	<u>Secondary</u>	<u>Federal</u>	<u>Total</u>
100 <u>Personnel Services – Salaries</u>				
100 Personnel Services – Salaries				136,561.38
Total Personnel Services – Salaries				\$136,561.38
200 <u>Personnel Services – Employee Benefits</u>				
220 Social Security Contributions				9,867.42
230 PSERS Retirement Contributions				40,283.18
Total Personnel Services – Employee Benefits				\$50,150.60
500 <u>Other Purchased Services</u>				
580 Travel				511.00
Total Other Purchased Services				\$511.00
800 <u>Other Objects</u>				
810 Dues and Fees				60.00
Total Other Objects				\$60.00
Total 2130 Attendance Services				\$187,282.98

LEA : 123465303 Methacton SD

Printed 10/17/2017 3:10:53 PM

General Fund (10)				
2140 Psychological Services	<u>Elementary</u>	<u>Secondary</u>	<u>Federal</u>	<u>Total</u>
100 <u>Personnel Services – Salaries</u>				
100 Personnel Services – Salaries	144,052.00	158,270.00		302,322.00
Total Personnel Services – Salaries	\$144,052.00	\$158,270.00		\$302,322.00
200 <u>Personnel Services – Employee Benefits</u>				
220 Social Security Contributions	10,404.32	11,511.19		21,915.51
230 PSERS Retirement Contributions	43,258.74	47,400.80		90,659.54
Total Personnel Services – Employee Benefits	\$53,663.06	\$58,911.99		\$112,575.05
300 <u>Purchased Professional and Technical Services</u>				
330 Other Professional Services		104,795.73		104,795.73
Total Purchased Professional and Technical Services		\$104,795.73		\$104,795.73
500 <u>Other Purchased Services</u>				
580 Travel	57.87	112.87		170.74
Total Other Purchased Services	\$57.87	\$112.87		\$170.74
600 <u>Supplies</u>				
610 General Supplies	7,005.52	10,177.32		17,182.84
640 Books and Periodicals		348.90		348.90
Total Supplies	\$7,005.52	\$10,526.22		\$17,531.74
Total 2140 Psychological Services	\$204,778.45	\$332,616.81		\$537,395.26

[illegible]

<u>Elementary</u>	<u>Secondary</u>	<u>Federal</u>	<u>Total</u>
(A)	(B)	(C)	(D)

[illegible]

145,425.00

\$145,425.00

\$145,425.00

LEA : 123465303 Methacton SD

Printed 10/17/2017 3:10:53 PM

General Fund (10)

2200 Support Services – Instructional Staff	<u>Elementary</u>	<u>Secondary</u>	<u>Federal</u>	<u>Total</u>
100 <u>Personnel Services – Salaries</u>				
100 Personnel Services – Salaries	773,038.32	515,109.56	22,913.01	1,311,060.89
Total Personnel Services – Salaries	\$773,038.32	\$515,109.56	\$22,913.01	\$1,311,060.89
200 <u>Personnel Services – Employee Benefits</u>				
210 Group Insurance – Contracted Provider	1,392.54	1,337.93		2,730.47
220 Social Security Contributions	55,640.12	37,348.62	1,714.85	94,703.59
230 PSERS Retirement Contributions	231,082.01	153,616.55	6,842.44	391,541.00
240 Tuition Reimbursement	117,214.35	78,353.24		195,567.59
260 Workers' Compensation	7,052.77	6,776.19		13,828.96
270 Group Insurance – Self-Insurance	162,781.24	156,549.02		319,330.26
299 All Other Employee Benefits	893.45	858.41		1,751.86
Total Personnel Services – Employee Benefits	\$576,056.48	\$434,839.96	\$8,557.29	\$1,019,453.73
300 <u>Purchased Professional and Technical Services</u>				
323 Professional Educational Services – Other Educational Agencies			55,887.44	55,887.44
324 Professional Educational Services – Employee Training and Development Services	57.41	55.16		112.57
Total Purchased Professional and Technical Services	\$57.41	\$55.16	\$55,887.44	\$56,000.01
400 <u>Purchased Property Services</u>				
430 Repairs and Maintenance Services		1,624.35		1,624.35
Total Purchased Property Services		\$1,624.35		\$1,624.35
500 <u>Other Purchased Services</u>				
580 Travel	1,581.73	1,330.79	17,106.75	20,019.27
Total Other Purchased Services	\$1,581.73	\$1,330.79	\$17,106.75	\$20,019.27
600 <u>Supplies</u>				
610 General Supplies	9,132.31	23,312.95	350.00	32,795.26
630 Food	265.20	254.80		520.00
640 Books and Periodicals	28,891.61	18,583.27		47,474.88
650 Supplies & Fees – Technology Related		295.00		295.00
Total Supplies	\$38,289.12	\$42,446.02	\$350.00	\$81,085.14
700 <u>Property</u>				
752 Capital Equipment – Original and Additional	1,049.40			1,049.40
Total Property	\$1,049.40			\$1,049.40
800 <u>Other Objects</u>				
810 Dues and Fees	943.34	65.66		1,009.00
Total Other Objects	\$943.34	\$65.66		\$1,009.00
Total 2200 Support Services – Instructional Staff	\$1,391,015.80	\$995,471.50	\$104,814.49	\$2,491,301.79

LEA : 123465303 Methacton SD

Printed 10/17/2017 3:10:53 PM

General Fund (10)				
2220 Technology Support Services				
	<u>Elementary</u>	<u>Secondary</u>	<u>Federal</u>	<u>Total</u>
100 <u>Personnel Services – Salaries</u>				
100 Personnel Services – Salaries	142,898.19	107,141.24		250,039.43
Total Personnel Services – Salaries	\$142,898.19	\$107,141.24		\$250,039.43
200 <u>Personnel Services – Employee Benefits</u>				
220 Social Security Contributions	10,648.40	8,029.54		18,677.94
230 PSERS Retirement Contributions	42,912.40	32,174.51		75,086.91
270 Group Insurance – Self-Insurance	1,235.03	1,337.95		2,572.98
Total Personnel Services – Employee Benefits	\$54,795.83	\$41,542.00		\$96,337.83
600 <u>Supplies</u>				
610 General Supplies	6,875.60	21,694.93		28,570.53
640 Books and Periodicals		1,742.98		1,742.98
Total Supplies	\$6,875.60	\$23,437.91		\$30,313.51
700 <u>Property</u>				
752 Capital Equipment – Original and Additional	1,049.40			1,049.40
Total Property	\$1,049.40			\$1,049.40
Total 2220 Technology Support Services	\$205,619.02	\$172,121.15		\$377,740.17

LEA : 123465303 Methacton SD

Printed 10/17/2017 3:10:53 PM

General Fund (10)					
2250 School Library Services		Elementary	Secondary	Federal	Total
100 <u>Personnel Services – Salaries</u>					
100	Personnel Services – Salaries	409,073.41	157,718.47		566,791.88
Total Personnel Services – Salaries		\$409,073.41	\$157,718.47		\$566,791.88
200 <u>Personnel Services – Employee Benefits</u>					
210	Group Insurance – Contracted Provider	1,392.54	1,337.93		2,730.47
220	Social Security Contributions	29,469.40	11,509.68		40,979.08
230	PSERS Retirement Contributions	122,795.78	47,264.84		170,060.62
260	Workers' Compensation	7,052.77	6,776.19		13,828.96
270	Group Insurance – Self-Insurance	161,546.21	155,211.07		316,757.28
Total Personnel Services – Employee Benefits		\$322,256.70	\$222,099.71		\$544,356.41
400 <u>Purchased Property Services</u>					
430	Repairs and Maintenance Services		1,624.35		1,624.35
Total Purchased Property Services			\$1,624.35		\$1,624.35
600 <u>Supplies</u>					
610	General Supplies	1,345.23	1,591.39		2,936.62
640	Books and Periodicals	28,838.29	16,840.29		45,678.58
650	Supplies & Fees – Technology Related		295.00		295.00
Total Supplies		\$30,183.52	\$18,726.68		\$48,910.20
Total 2250 School Library Services		\$761,513.63	\$400,169.21		\$1,161,682.84

LEA : 123465303 Methacton SD

Printed 10/17/2017 3:10:53 PM

General Fund (10)

2260 Instruction and Curriculum Development Services	<u>Elementary</u>	<u>Secondary</u>	<u>Federal</u>	<u>Total</u>
100 <u>Personnel Services – Salaries</u>				
100 Personnel Services – Salaries	162,206.63	193,698.00		355,904.63
Total Personnel Services – Salaries	\$162,206.63	\$193,698.00		\$355,904.63
200 <u>Personnel Services – Employee Benefits</u>				
220 Social Security Contributions	11,541.49	13,984.68		25,526.17
230 PSERS Retirement Contributions	48,217.40	57,693.57		105,910.97
299 All Other Employee Benefits	510.00	490.00		1,000.00
Total Personnel Services – Employee Benefits	\$60,268.89	\$72,168.25		\$132,437.14
600 <u>Supplies</u>				
610 General Supplies	883.77			883.77
640 Books and Periodicals	53.32			53.32
Total Supplies	\$937.09			\$937.09
800 <u>Other Objects</u>				
810 Dues and Fees	875.00			875.00
Total Other Objects	\$875.00			\$875.00
Total 2260 Instruction and Curriculum Development Services	\$224,287.61	\$265,866.25		\$490,153.86

LEA : 123465303 Methacton SD

Printed 10/17/2017 3:10:53 PM

General Fund (10)

2270 Instructional Staff Professional Development Services	<u>Elementary</u>	<u>Secondary</u>	<u>Federal</u>	<u>Total</u>
100 <u>Personnel Services – Salaries</u>				
100 Personnel Services – Salaries	58,860.09	56,551.85	22,913.01	138,324.95
Total Personnel Services – Salaries	\$58,860.09	\$56,551.85	\$22,913.01	\$138,324.95
200 <u>Personnel Services – Employee Benefits</u>				
220 Social Security Contributions	3,980.83	3,824.72	1,714.85	9,520.40
230 PSERS Retirement Contributions	17,156.43	16,483.63	6,842.44	40,482.50
240 Tuition Reimbursement	117,214.35	78,353.24		195,567.59
299 All Other Employee Benefits	383.45	368.41		751.86
Total Personnel Services – Employee Benefits	\$138,735.06	\$99,030.00	\$8,557.29	\$246,322.35
300 <u>Purchased Professional and Technical Services</u>				
323 Professional Educational Services – Other Educational Agencies			55,887.44	55,887.44
324 Professional Educational Services – Employee Training and Development Services	57.41	55.16		112.57
Total Purchased Professional and Technical Services	\$57.41	\$55.16	\$55,887.44	\$56,000.01
500 <u>Other Purchased Services</u>				
580 Travel	1,581.73	1,330.79	17,106.75	20,019.27
Total Other Purchased Services	\$1,581.73	\$1,330.79	\$17,106.75	\$20,019.27
600 <u>Supplies</u>				
610 General Supplies	27.71	26.63	350.00	404.34
630 Food	265.20	254.80		520.00
Total Supplies	\$292.91	\$281.43	\$350.00	\$924.34
800 <u>Other Objects</u>				
810 Dues and Fees	68.34	65.66		134.00
Total Other Objects	\$68.34	\$65.66		\$134.00
Total 2270 Instructional Staff Professional Development Services	\$199,595.54	\$157,314.89	\$104,814.49	\$461,724.92

LEA : 123465303 Methacton SD

Printed 10/17/2017 3:10:53 PM

General Fund (10)

2300 Support Services – Administration	Elementary	Secondary	Federal	Total
100 <u>Personnel Services – Salaries</u>				
100 Personnel Services – Salaries	1,460,068.37	1,249,987.89		3,482,268.62
Total Personnel Services – Salaries	\$1,460,068.37	\$1,249,987.89		\$3,482,268.62
200 <u>Personnel Services – Employee Benefits</u>				
210 Group Insurance – Contracted Provider	3,456.97	3,321.40		6,778.37
220 Social Security Contributions	101,986.47	88,807.39		241,121.92
230 PSERS Retirement Contributions	430,972.69	364,278.20		998,145.18
260 Workers' Compensation	17,332.48	16,652.77		33,985.25
270 Group Insurance – Self-Insurance	397,083.29	381,511.39		778,594.68
299 All Other Employee Benefits	7,000.00	4,950.38		14,950.38
Total Personnel Services – Employee Benefits	\$957,831.90	\$859,521.53		\$2,073,575.78
300 <u>Purchased Professional and Technical Services</u>				
310 Official / Administrative Services				135,212.92
330 Other Professional Services				570,112.70
390 Other Purchased Professional and Technical Services				999.00
Total Purchased Professional and Technical Services				\$706,324.62
400 <u>Purchased Property Services</u>				
440 Rentals		3,457.58		3,457.58
Total Purchased Property Services		\$3,457.58		\$3,457.58
500 <u>Other Purchased Services</u>				
530 Communications				2,388.01
549 Other Advertising/Public Relations				2,803.38
550 Printing and Binding	624.26	20,001.03		24,000.77
580 Travel	1,596.11	1,434.25		8,839.71
591 Services Purchased Locally		400.00		400.00
Total Other Purchased Services	\$2,220.37	\$21,835.28		\$38,431.87
600 <u>Supplies</u>				
610 General Supplies	1,581.52	2,971.89		22,950.92
630 Food	914.34	300.20		3,911.79
640 Books and Periodicals	72.99	159.00		1,859.69
Total Supplies	\$2,568.85	\$3,431.09		\$28,722.40
700 <u>Property</u>				
752 Capital Equipment – Original and Additional		11,109.00		11,109.00
Total Property		\$11,109.00		\$11,109.00
800 <u>Other Objects</u>				
810 Dues and Fees	4,643.00	7,693.40		40,740.65
Total Other Objects	\$4,643.00	\$7,693.40		\$40,740.65
Total 2300 Support Services – Administration	\$2,427,332.49	\$2,157,035.77		\$6,384,630.52

LEA : 123465303 Methacton SD

Printed 10/17/2017 3:10:53 PM

General Fund (10)				
2310 Board Services	<u>Elementary</u>	<u>Secondary</u>	<u>Federal</u>	<u>Total</u>
300 <u>Purchased Professional and Technical Services</u>				
330 Other Professional Services				800.00
Total Purchased Professional and Technical Services				\$800.00
500 <u>Other Purchased Services</u>				
549 Other Advertising/Public Relations				1,616.88
580 Travel				975.00
Total Other Purchased Services				\$2,591.88
600 <u>Supplies</u>				
610 General Supplies				1,399.76
630 Food				8.91
640 Books and Periodicals				205.70
Total Supplies				\$1,614.37
800 <u>Other Objects</u>				
810 Dues and Fees				13,795.00
Total Other Objects				\$13,795.00
Total 2310 Board Services				\$18,801.25

LEA : 123465303 Methacton SD

Printed 10/17/2017 3:10:53 PM

General Fund (10)

2330 Tax Assessment and Collection Services	<u>Elementary</u>	<u>Secondary</u>	<u>Federal</u>	<u>Total</u>
100 <u>Personnel Services – Salaries</u>				
100 Personnel Services – Salaries				42,298.20
Total Personnel Services – Salaries				\$42,298.20
200 <u>Personnel Services – Employee Benefits</u>				
220 Social Security Contributions				3,235.96
Total Personnel Services – Employee Benefits				\$3,235.96
300 <u>Purchased Professional and Technical Services</u>				
310 Official / Administrative Services				135,212.92
330 Other Professional Services				100,328.00
Total Purchased Professional and Technical Services				\$235,540.92
600 <u>Supplies</u>				
610 General Supplies				9,645.12
Total Supplies				\$9,645.12
Total 2330 Tax Assessment and Collection Services				\$290,720.20

LEA : 123465303 Methacton SD

Printed 10/17/2017 3:10:53 PM

General Fund (10)				
2340 Staff Relations and Negotiations Services	<u>Elementary</u>	<u>Secondary</u>	<u>Federal</u>	<u>Total</u>
100 <u>Personnel Services – Salaries</u>				
100 Personnel Services – Salaries				319,251.71
Total Personnel Services – Salaries				\$319,251.71
200 <u>Personnel Services – Employee Benefits</u>				
220 Social Security Contributions				20,770.93
230 PSERS Retirement Contributions				82,207.51
299 All Other Employee Benefits				1,000.00
Total Personnel Services – Employee Benefits				\$103,978.44
300 <u>Purchased Professional and Technical Services</u>				
330 Other Professional Services				9,648.00
390 Other Purchased Professional and Technical Services				999.00
Total Purchased Professional and Technical Services				\$10,647.00
500 <u>Other Purchased Services</u>				
530 Communications				7.20
549 Other Advertising/Public Relations				1,186.50
Total Other Purchased Services				\$1,193.70
600 <u>Supplies</u>				
610 General Supplies				4,129.71
630 Food				326.00
Total Supplies				\$4,455.71
800 <u>Other Objects</u>				
810 Dues and Fees				11,714.25
Total Other Objects				\$11,714.25
Total 2340 Staff Relations and Negotiations Services				\$451,240.81

LEA : 123465303 Methacton SD

Printed 10/17/2017 3:10:53 PM

General Fund (10)

2350 Legal and Accounting Services	<u>Elementary</u>	<u>Secondary</u>	<u>Federal</u>	<u>Total</u>
300 <u>Purchased Professional and Technical Services</u>				
330 Other Professional Services				338,854.45
Total Purchased Professional and Technical Services				\$338,854.45
Total 2350 Legal and Accounting Services				\$338,854.45

LEA : 123465303 Methacton SD

Printed 10/17/2017 3:10:53 PM

General Fund (10)				
2360 Office of the Superintendent / Executive Director Services	<u>Elementary</u>	<u>Secondary</u>	<u>Federal</u>	<u>Total</u>
100 <u>Personnel Services – Salaries</u>				
100 Personnel Services – Salaries				255,027.78
Total Personnel Services – Salaries				\$255,027.78
200 <u>Personnel Services – Employee Benefits</u>				
220 Social Security Contributions				14,995.29
230 PSERS Retirement Contributions				74,773.65
299 All Other Employee Benefits				1,000.00
Total Personnel Services – Employee Benefits				\$90,768.94
300 <u>Purchased Professional and Technical Services</u>				
330 Other Professional Services				96,344.25
Total Purchased Professional and Technical Services				\$96,344.25
500 <u>Other Purchased Services</u>				
580 Travel				4,654.45
Total Other Purchased Services				\$4,654.45
600 <u>Supplies</u>				
610 General Supplies				2,182.53
630 Food				2,362.34
640 Books and Periodicals				928.00
Total Supplies				\$5,472.87
800 <u>Other Objects</u>				
810 Dues and Fees				2,175.00
Total Other Objects				\$2,175.00
Total 2360 Office of the Superintendent / Executive Director Services				\$454,443.29

LEA : 123465303 Methacton SD

Printed 10/17/2017 3:10:53 PM

General Fund (10)				
2370 Community Relations Services				
	<u>Elementary</u>	<u>Secondary</u>	<u>Federal</u>	<u>Total</u>
100 <u>Personnel Services – Salaries</u>				
100 Personnel Services – Salaries				155,634.67
Total Personnel Services – Salaries				\$155,634.67
200 <u>Personnel Services – Employee Benefits</u>				
220 Social Security Contributions				11,325.88
230 PSERS Retirement Contributions				45,913.13
299 All Other Employee Benefits				1,000.00
Total Personnel Services – Employee Benefits				\$58,239.01
300 <u>Purchased Professional and Technical Services</u>				
330 Other Professional Services				150.00
Total Purchased Professional and Technical Services				\$150.00
500 <u>Other Purchased Services</u>				
530 Communications				2,380.81
550 Printing and Binding				3,375.48
580 Travel				179.90
Total Other Purchased Services				\$5,936.19
600 <u>Supplies</u>				
610 General Supplies				1,040.39
640 Books and Periodicals				494.00
Total Supplies				\$1,534.39
800 <u>Other Objects</u>				
810 Dues and Fees				720.00
Total Other Objects				\$720.00
Total 2370 Community Relations Services				\$222,214.26

LEA : 123465303 Methacton SD

Printed 10/17/2017 3:10:53 PM

General Fund (10)

2380 Office of the Principal Services	Elementary	Secondary	Federal	Total
100 <u>Personnel Services – Salaries</u>				
100 Personnel Services – Salaries	1,460,068.37	1,249,987.89		2,710,056.26
Total Personnel Services – Salaries	\$1,460,068.37	\$1,249,987.89		\$2,710,056.26
200 <u>Personnel Services – Employee Benefits</u>				
210 Group Insurance – Contracted Provider	3,456.97	3,321.40		6,778.37
220 Social Security Contributions	101,986.47	88,807.39		190,793.86
230 PSERS Retirement Contributions	430,972.69	364,278.20		795,250.89
260 Workers' Compensation	17,332.48	16,652.77		33,985.25
270 Group Insurance – Self-Insurance	397,083.29	381,511.39		778,594.68
299 All Other Employee Benefits	7,000.00	4,950.38		11,950.38
Total Personnel Services – Employee Benefits	\$957,831.90	\$859,521.53		\$1,817,353.43
400 <u>Purchased Property Services</u>				
440 Rentals		3,457.58		3,457.58
Total Purchased Property Services		\$3,457.58		\$3,457.58
500 <u>Other Purchased Services</u>				
550 Printing and Binding	624.26	20,001.03		20,625.29
580 Travel	1,596.11	1,434.25		3,030.36
591 Services Purchased Locally		400.00		400.00
Total Other Purchased Services	\$2,220.37	\$21,835.28		\$24,055.65
600 <u>Supplies</u>				
610 General Supplies	1,581.52	2,971.89		4,553.41
630 Food	914.34	300.20		1,214.54
640 Books and Periodicals	72.99	159.00		231.99
Total Supplies	\$2,568.85	\$3,431.09		\$5,999.94
700 <u>Property</u>				
752 Capital Equipment – Original and Additional		11,109.00		11,109.00
Total Property		\$11,109.00		\$11,109.00
800 <u>Other Objects</u>				
810 Dues and Fees	4,643.00	7,693.40		12,336.40
Total Other Objects	\$4,643.00	\$7,693.40		\$12,336.40
Total 2380 Office of the Principal Services	\$2,427,332.49	\$2,157,035.77		\$4,584,368.26

LEA : 123465303 Methacton SD

Printed 10/17/2017 3:10:53 PM

General Fund (10)

2390 Other Administration Services	<u>Elementary</u>	<u>Secondary</u>	<u>Federal</u>	<u>Total</u>
300 <u>Purchased Professional and Technical Services</u>				
330 Other Professional Services				23,988.00
Total Purchased Professional and Technical Services				\$23,988.00
Total 2390 Other Administration Services				\$23,988.00

LEA : 123465303 Methacton SD

Printed 10/17/2017 3:10:53 PM

General Fund (10)				
2400 Support Services – Pupil Health	<u>Elementary</u>	<u>Secondary</u>	<u>Federal</u>	<u>Total</u>
100 <u>Personnel Services – Salaries</u>				
100 Personnel Services – Salaries				746,902.38
Total Personnel Services – Salaries				\$746,902.38
200 <u>Personnel Services – Employee Benefits</u>				
210 Group Insurance – Contracted Provider				1,397.71
220 Social Security Contributions				53,753.50
230 PSERS Retirement Contributions				220,553.62
260 Workers' Compensation				7,078.95
270 Group Insurance – Self-Insurance				162,145.84
Total Personnel Services – Employee Benefits				\$444,929.62
300 <u>Purchased Professional and Technical Services</u>				
322 Professional Educational Services – lus				26,426.22
330 Other Professional Services			1,191.00	412,013.26
Total Purchased Professional and Technical Services			\$1,191.00	\$438,439.48
500 <u>Other Purchased Services</u>				
580 Travel				330.00
Total Other Purchased Services				\$330.00
600 <u>Supplies</u>				
610 General Supplies				23,073.30
640 Books and Periodicals				305.90
Total Supplies				\$23,379.20
Total 2400 Support Services – Pupil Health			\$1,191.00	\$1,653,980.68

LEA : 123465303 Methacton SD

Printed 10/17/2017 3:10:53 PM

General Fund (10)				
2420 Medical Services	<u>Elementary</u>	<u>Secondary</u>	<u>Federal</u>	<u>Total</u>
100 <u>Personnel Services – Salaries</u>				
100 Personnel Services – Salaries				73,198.00
Total Personnel Services – Salaries				\$73,198.00
200 <u>Personnel Services – Employee Benefits</u>				
220 Social Security Contributions				4,701.58
230 PSERS Retirement Contributions				21,278.63
Total Personnel Services – Employee Benefits				\$25,980.21
300 <u>Purchased Professional and Technical Services</u>				
330 Other Professional Services				326,999.26
Total Purchased Professional and Technical Services				\$326,999.26
600 <u>Supplies</u>				
610 General Supplies				3,040.87
640 Books and Periodicals				39.90
Total Supplies				\$3,080.77
Total 2420 Medical Services				\$429,258.24

LEA : 123465303 Methacton SD

Printed 10/17/2017 3:10:53 PM

General Fund (10)

2430 Dental Services	<u>Elementary</u>	<u>Secondary</u>	<u>Federal</u>	<u>Total</u>
300 <u>Purchased Professional and Technical Services</u>				
330 Other Professional Services				150.00
Total Purchased Professional and Technical Services				\$150.00
600 <u>Supplies</u>				
610 General Supplies				134.95
Total Supplies				\$134.95
Total 2430 Dental Services				\$284.95

LEA : 123465303 Methacton SD

Printed 10/17/2017 3:10:53 PM

General Fund (10)				
2440 Nursing Services				
	<u>Elementary</u>	<u>Secondary</u>	<u>Federal</u>	<u>Total</u>
100 <u>Personnel Services – Salaries</u>				
100 Personnel Services – Salaries				673,704.38
Total Personnel Services – Salaries				\$673,704.38
200 <u>Personnel Services – Employee Benefits</u>				
210 Group Insurance – Contracted Provider				1,397.71
220 Social Security Contributions				49,051.92
230 PSERS Retirement Contributions				199,274.99
260 Workers' Compensation				7,078.95
270 Group Insurance – Self-Insurance				162,145.84
Total Personnel Services – Employee Benefits				\$418,949.41
300 <u>Purchased Professional and Technical Services</u>				
322 Professional Educational Services – lus				26,426.22
330 Other Professional Services			1,191.00	84,864.00
Total Purchased Professional and Technical Services			\$1,191.00	\$111,290.22
500 <u>Other Purchased Services</u>				
580 Travel				330.00
Total Other Purchased Services				\$330.00
600 <u>Supplies</u>				
610 General Supplies				19,897.48
640 Books and Periodicals				266.00
Total Supplies				\$20,163.48
Total 2440 Nursing Services			\$1,191.00	\$1,224,437.49

LEA : 123465303 Methacton SD

Printed 10/17/2017 3:10:53 PM

General Fund (10)				
2500 Support Services – Business	<u>Elementary</u>	<u>Secondary</u>	<u>Federal</u>	<u>Total</u>
100 <u>Personnel Services – Salaries</u>				
100 Personnel Services – Salaries				376,367.47
Total Personnel Services – Salaries				\$376,367.47
200 <u>Personnel Services – Employee Benefits</u>				
210 Group Insurance – Contracted Provider				750.56
220 Social Security Contributions				27,400.74
230 PSERS Retirement Contributions				112,064.58
260 Workers' Compensation				5,345.50
270 Group Insurance – Self-Insurance				88,152.64
299 All Other Employee Benefits				1,000.00
Total Personnel Services – Employee Benefits				\$234,714.02
300 <u>Purchased Professional and Technical Services</u>				
330 Other Professional Services				52,607.92
Total Purchased Professional and Technical Services				\$52,607.92
400 <u>Purchased Property Services</u>				
440 Rentals				11,592.00
Total Purchased Property Services				\$11,592.00
500 <u>Other Purchased Services</u>				
520 Insurance – General				247,156.70
530 Communications				21,296.41
550 Printing and Binding				511.52
580 Travel				591.01
Total Other Purchased Services				\$269,555.64
600 <u>Supplies</u>				
610 General Supplies				2,538.45
Total Supplies				\$2,538.45
800 <u>Other Objects</u>				
810 Dues and Fees				21,861.56
Total Other Objects				\$21,861.56
Total 2500 Support Services – Business				\$969,237.06

LEA : 123465303 Methacton SD

Printed 10/17/2017 3:10:53 PM

General Fund (10)				
2510 Fiscal Services	<u>Elementary</u>	<u>Secondary</u>	<u>Federal</u>	<u>Total</u>
100 <u>Personnel Services – Salaries</u>				
100 Personnel Services – Salaries				376,367.47
Total Personnel Services – Salaries				\$376,367.47
200 <u>Personnel Services – Employee Benefits</u>				
210 Group Insurance – Contracted Provider				750.56
220 Social Security Contributions				27,400.74
230 PSERS Retirement Contributions				112,064.58
260 Workers' Compensation				5,345.50
270 Group Insurance – Self-Insurance				88,152.64
299 All Other Employee Benefits				1,000.00
Total Personnel Services – Employee Benefits				\$234,714.02
300 <u>Purchased Professional and Technical Services</u>				
330 Other Professional Services				51,722.79
Total Purchased Professional and Technical Services				\$51,722.79
500 <u>Other Purchased Services</u>				
530 Communications				9.80
550 Printing and Binding				511.52
580 Travel				591.01
Total Other Purchased Services				\$1,112.33
600 <u>Supplies</u>				
610 General Supplies				2,538.45
Total Supplies				\$2,538.45
800 <u>Other Objects</u>				
810 Dues and Fees				21,861.56
Total Other Objects				\$21,861.56
Total 2510 Fiscal Services				\$688,316.62

LEA : 123465303 Methacton SD

Printed 10/17/2017 3:10:53 PM

General Fund (10)

2511 Supervision of Fiscal Services - Head of Component

Elementary Secondary Federal Total

100 <u>Personnel Services – Salaries</u>				
100 Personnel Services – Salaries				44,753.46
Total Personnel Services – Salaries				\$44,753.46
200 <u>Personnel Services – Employee Benefits</u>				
210 Group Insurance – Contracted Provider				106.88
220 Social Security Contributions				3,350.12
230 PSERS Retirement Contributions				12,527.03
260 Workers' Compensation				763.66
270 Group Insurance – Self-Insurance				6,804.28
Total Personnel Services – Employee Benefits				\$23,551.97
300 <u>Purchased Professional and Technical Services</u>				
330 Other Professional Services				20,527.20
Total Purchased Professional and Technical Services				\$20,527.20
500 <u>Other Purchased Services</u>				
580 Travel				554.00
Total Other Purchased Services				\$554.00
800 <u>Other Objects</u>				
810 Dues and Fees				2,612.76
Total Other Objects				\$2,612.76
Total 2511 Supervision of Fiscal Services - Head of Component				\$91,999.39

LEA : 123465303 Methacton SD

Printed 10/17/2017 3:10:53 PM

General Fund (10)				
2513 Receiving and Disbursing Funds Services	<u>Elementary</u>	<u>Secondary</u>	<u>Federal</u>	<u>Total</u>
100 <u>Personnel Services – Salaries</u>				
100 Personnel Services – Salaries				89,384.89
Total Personnel Services – Salaries				\$89,384.89
200 <u>Personnel Services – Employee Benefits</u>				
210 Group Insurance – Contracted Provider				148.08
220 Social Security Contributions				6,516.04
230 PSERS Retirement Contributions				26,808.94
260 Workers' Compensation				1,527.28
270 Group Insurance – Self-Insurance				24,303.60
Total Personnel Services – Employee Benefits				\$59,303.94
500 <u>Other Purchased Services</u>				
530 Communications				9.80
Total Other Purchased Services				\$9.80
Total 2513 Receiving and Disbursing Funds Services				\$148,698.63

LEA : 123465303 Methacton SD

Printed 10/17/2017 3:10:53 PM

General Fund (10)

2514 Payroll Services

Elementary Secondary Federal Total

100 <u>Personnel Services – Salaries</u>				
100 Personnel Services – Salaries				45,025.50
Total Personnel Services – Salaries				\$45,025.50
200 <u>Personnel Services – Employee Benefits</u>				
210 Group Insurance – Contracted Provider				26.88
220 Social Security Contributions				3,328.28
230 PSERS Retirement Contributions				13,521.04
260 Workers' Compensation				763.64
270 Group Insurance – Self-Insurance				7,136.16
Total Personnel Services – Employee Benefits				\$24,776.00
Total 2514 Payroll Services				\$69,801.50

LEA : 123465303 Methacton SD

Printed 10/17/2017 3:10:53 PM

General Fund (10)				
2515 Financial Accounting Services	<u>Elementary</u>	<u>Secondary</u>	<u>Federal</u>	<u>Total</u>
100 <u>Personnel Services – Salaries</u>				
100 Personnel Services – Salaries				108,884.44
Total Personnel Services – Salaries				\$108,884.44
200 <u>Personnel Services – Employee Benefits</u>				
210 Group Insurance – Contracted Provider				320.64
220 Social Security Contributions				8,057.07
230 PSERS Retirement Contributions				32,697.97
260 Workers' Compensation				763.64
270 Group Insurance – Self-Insurance				16,636.20
299 All Other Employee Benefits				1,000.00
Total Personnel Services – Employee Benefits				\$59,475.52
500 <u>Other Purchased Services</u>				
580 Travel				37.01
Total Other Purchased Services				\$37.01
800 <u>Other Objects</u>				
810 Dues and Fees				14,788.80
Total Other Objects				\$14,788.80
Total 2515 Financial Accounting Services				\$183,185.77

LEA : 123465303 Methacton SD

Printed 10/17/2017 3:10:53 PM

General Fund (10)

2519 Other Fiscal Services

	<u>Elementary</u>	<u>Secondary</u>	<u>Federal</u>	<u>Total</u>
100 <u>Personnel Services – Salaries</u>				
100 Personnel Services – Salaries				88,319.18
Total Personnel Services – Salaries				\$88,319.18
200 <u>Personnel Services – Employee Benefits</u>				
210 Group Insurance – Contracted Provider				148.08
220 Social Security Contributions				6,149.23
230 PSERS Retirement Contributions				26,509.60
260 Workers' Compensation				1,527.28
270 Group Insurance – Self-Insurance				33,272.40
Total Personnel Services – Employee Benefits				\$67,606.59
300 <u>Purchased Professional and Technical Services</u>				
330 Other Professional Services				31,195.59
Total Purchased Professional and Technical Services				\$31,195.59
500 <u>Other Purchased Services</u>				
550 Printing and Binding				511.52
Total Other Purchased Services				\$511.52
600 <u>Supplies</u>				
610 General Supplies				2,538.45
Total Supplies				\$2,538.45
800 <u>Other Objects</u>				
810 Dues and Fees				4,460.00
Total Other Objects				\$4,460.00
Total 2519 Other Fiscal Services				\$194,631.33

LEA : 123465303 Methacton SD

Printed 10/17/2017 3:10:53 PM

General Fund (10)				
2590 Other Support Services – Business	<u>Elementary</u>	<u>Secondary</u>	<u>Federal</u>	<u>Total</u>
300 <u>Purchased Professional and Technical Services</u>				
330 Other Professional Services				885.13
Total Purchased Professional and Technical Services				\$885.13
400 <u>Purchased Property Services</u>				
440 Rentals				11,592.00
Total Purchased Property Services				\$11,592.00
500 <u>Other Purchased Services</u>				
520 Insurance – General				247,156.70
530 Communications				21,286.61
Total Other Purchased Services				\$268,443.31
Total 2590 Other Support Services – Business				\$280,920.44

LEA : 123465303 Methacton SD

Printed 10/17/2017 3:10:53 PM

General Fund (10)				
2600 Operation and Maintenance of Plant Services	<u>Elementary</u>	<u>Secondary</u>	<u>Federal</u>	<u>Total</u>
100 <u>Personnel Services – Salaries</u>				
100 Personnel Services – Salaries				3,286,050.44
Total Personnel Services – Salaries				\$3,286,050.44
200 <u>Personnel Services – Employee Benefits</u>				
210 Group Insurance – Contracted Provider				7,649.82
220 Social Security Contributions				243,404.69
230 PSERS Retirement Contributions				981,318.98
260 Workers' Compensation				37,066.94
270 Group Insurance – Self-Insurance				850,772.28
299 All Other Employee Benefits				3,240.86
Total Personnel Services – Employee Benefits				\$2,123,453.57
300 <u>Purchased Professional and Technical Services</u>				
330 Other Professional Services				18,974.72
340 Technical Services				3,243.40
390 Other Purchased Professional and Technical Services				247,650.83
Total Purchased Professional and Technical Services				\$269,868.95
400 <u>Purchased Property Services</u>				
410 Cleaning Services				111,771.14
420 Utility Services				192,705.86
430 Repairs and Maintenance Services				523,232.28
440 Rentals				48,471.26
450 Construction Services				11,652.94
460 Extermination Services				7,739.25
490 Other Purchased Property Services				7,991.00
Total Purchased Property Services				\$903,563.73
500 <u>Other Purchased Services</u>				
530 Communications				67,985.55
580 Travel				4,092.41
Total Other Purchased Services				\$72,077.96
600 <u>Supplies</u>				
610 General Supplies	161,145.64	161,034.89		322,180.53
620 Energy				1,134,932.00
Total Supplies				\$1,457,112.53
700 <u>Property</u>				
752 Capital Equipment – Original and Additional				47,063.15
762 Capitalized Equipment - Replacement				28,578.20
Total Property				\$75,641.35
800 <u>Other Objects</u>				
810 Dues and Fees				4,586.00
Total Other Objects				\$4,586.00
Total 2600 Operation and Maintenance of Plant Services	\$161,145.64	\$161,034.89		\$8,192,354.53

LEA : 123465303 Methacton SD

Printed 10/17/2017 3:10:53 PM

General Fund (10)				
2610 Supervision of Operation and Maintenance of Plant Services	<u>Elementary</u>	<u>Secondary</u>	<u>Federal</u>	<u>Total</u>
100 <u>Personnel Services – Salaries</u>				
100 Personnel Services – Salaries				271,236.37
Total Personnel Services – Salaries				\$271,236.37
200 <u>Personnel Services – Employee Benefits</u>				
210 Group Insurance – Contracted Provider				715.32
220 Social Security Contributions				19,449.31
230 PSERS Retirement Contributions				80,053.71
260 Workers' Compensation				2,290.92
270 Group Insurance – Self-Insurance				54,214.80
299 All Other Employee Benefits				1,934.92
Total Personnel Services – Employee Benefits				\$158,658.98
500 <u>Other Purchased Services</u>				
580 Travel				322.33
Total Other Purchased Services				\$322.33
Total 2610 Supervision of Operation and Maintenance of Plant Services				\$430,217.68

LEA : 123465303 Methacton SD

Printed 10/17/2017 3:10:53 PM

General Fund (10)				
2611 Supervision of Operation and Maintenance of Plant Services – Head of Component	<u>Elementary</u>	<u>Secondary</u>	<u>Federal</u>	<u>Total</u>
100 <u>Personnel Services – Salaries</u>				
100 Personnel Services – Salaries				176,914.45
Total Personnel Services – Salaries				\$176,914.45
200 <u>Personnel Services – Employee Benefits</u>				
210 Group Insurance – Contracted Provider				394.68
220 Social Security Contributions				12,486.10
230 PSERS Retirement Contributions				52,137.77
260 Workers' Compensation				1,527.28
270 Group Insurance – Self-Insurance				37,639.44
299 All Other Employee Benefits				1,000.00
Total Personnel Services – Employee Benefits				\$105,185.27
500 <u>Other Purchased Services</u>				
580 Travel				322.33
Total Other Purchased Services				\$322.33
Total 2611 Supervision of Operation and Maintenance of Plant Services – Head of Component				\$282,422.05

LEA : 123465303 Methacton SD

Printed 10/17/2017 3:10:53 PM

General Fund (10)

2619 Supervision of Operation and Maintenance of Plant Services – All Other Supervision	<u>Elementary</u>	<u>Secondary</u>	<u>Federal</u>	<u>Total</u>
100 <u>Personnel Services – Salaries</u>				
100 Personnel Services – Salaries				94,321.92
Total Personnel Services – Salaries				\$94,321.92
200 <u>Personnel Services – Employee Benefits</u>				
210 Group Insurance – Contracted Provider				320.64
220 Social Security Contributions				6,963.21
230 PSERS Retirement Contributions				27,915.94
260 Workers' Compensation				763.64
270 Group Insurance – Self-Insurance				16,575.36
299 All Other Employee Benefits				934.92
Total Personnel Services – Employee Benefits				\$53,473.71
Total 2619 Supervision of Operation and Maintenance of Plant Services – All Other Supervision				\$147,795.63

LEA : 123465303 Methacton SD

Printed 10/17/2017 3:10:53 PM

General Fund (10)				
2620 Operation of Buildings Services	<u>Elementary</u>	<u>Secondary</u>	<u>Federal</u>	<u>Total</u>
100 <u>Personnel Services – Salaries</u>				
100 Personnel Services – Salaries				2,754,307.75
Total Personnel Services – Salaries				\$2,754,307.75
200 <u>Personnel Services – Employee Benefits</u>				
210 Group Insurance – Contracted Provider				6,934.50
220 Social Security Contributions				204,758.86
230 PSERS Retirement Contributions				823,035.38
260 Workers' Compensation				34,776.02
270 Group Insurance – Self-Insurance				796,557.48
299 All Other Employee Benefits				1,305.94
Total Personnel Services – Employee Benefits				\$1,867,368.18
300 <u>Purchased Professional and Technical Services</u>				
330 Other Professional Services				18,724.72
Total Purchased Professional and Technical Services				\$18,724.72
400 <u>Purchased Property Services</u>				
410 Cleaning Services				67,413.71
420 Utility Services				192,705.86
430 Repairs and Maintenance Services				219,350.94
440 Rentals				760.52
450 Construction Services				4,688.94
490 Other Purchased Property Services				3,230.00
Total Purchased Property Services				\$488,149.97
500 <u>Other Purchased Services</u>				
530 Communications				67,985.55
Total Other Purchased Services				\$67,985.55
600 <u>Supplies</u>				
610 General Supplies	121,867.12	118,450.70		240,317.82
620 Energy				1,134,907.01
Total Supplies	\$121,867.12	\$118,450.70		\$1,375,224.83
700 <u>Property</u>				
752 Capital Equipment – Original and Additional				10,345.00
762 Capitalized Equipment - Replacement				13,419.59
Total Property				\$23,764.59
800 <u>Other Objects</u>				
810 Dues and Fees				2,259.00
Total Other Objects				\$2,259.00
Total 2620 Operation of Buildings Services	\$121,867.12	\$118,450.70		\$6,597,784.59

LEA : 123465303 Methacton SD

Printed 10/17/2017 3:10:53 PM

General Fund (10)				
2630 Care and Upkeep of Grounds Services	<u>Elementary</u>	<u>Secondary</u>	<u>Federal</u>	<u>Total</u>
100 <u>Personnel Services – Salaries</u>				
100 Personnel Services – Salaries				260,506.32
Total Personnel Services – Salaries				\$260,506.32
200 <u>Personnel Services – Employee Benefits</u>				
220 Social Security Contributions				19,196.52
230 PSERS Retirement Contributions				78,229.89
Total Personnel Services – Employee Benefits				\$97,426.41
400 <u>Purchased Property Services</u>				
410 Cleaning Services				20,490.00
430 Repairs and Maintenance Services				23,825.44
490 Other Purchased Property Services				1,425.00
Total Purchased Property Services				\$45,740.44
500 <u>Other Purchased Services</u>				
580 Travel				328.72
Total Other Purchased Services				\$328.72
600 <u>Supplies</u>				
610 General Supplies	22,297.13	25,276.38		47,573.51
Total Supplies	\$22,297.13	\$25,276.38		\$47,573.51
700 <u>Property</u>				
752 Capital Equipment – Original and Additional				36,718.15
Total Property				\$36,718.15
800 <u>Other Objects</u>				
810 Dues and Fees				35.00
Total Other Objects				\$35.00
Total 2630 Care and Upkeep of Grounds Services	\$22,297.13	\$25,276.38		\$488,328.55

LEA : 123465303 Methacton SD

Printed 10/17/2017 3:10:53 PM

General Fund (10)

2640 Care and Upkeep of Equipment Services	<u>Elementary</u>	<u>Secondary</u>	<u>Federal</u>	<u>Total</u>
400 <u>Purchased Property Services</u>				
430 Repairs and Maintenance Services				236,098.09
440 Rentals				28,653.00
Total Purchased Property Services				\$264,751.09
600 <u>Supplies</u>				
610 General Supplies	6,223.17	6,974.06		13,197.23
Total Supplies	\$6,223.17	\$6,974.06		\$13,197.23
700 <u>Property</u>				
762 Capitalized Equipment - Replacement				15,158.61
Total Property				\$15,158.61
Total 2640 Care and Upkeep of Equipment Services	\$6,223.17	\$6,974.06		\$293,106.93

LEA : 123465303 Methacton SD

Printed 10/17/2017 3:10:53 PM

General Fund (10)

2650 Vehicle Operation and Maintenance Services (Other Than Student Transportation Vehicles)	<u>Elementary</u>	<u>Secondary</u>	<u>Federal</u>	<u>Total</u>
400 <u>Purchased Property Services</u>				
430 Repairs and Maintenance Services				11,963.78
Total Purchased Property Services				\$11,963.78
600 <u>Supplies</u>				
610 General Supplies	8,370.54	8,820.62		17,191.16
Total Supplies	\$8,370.54	\$8,820.62		\$17,191.16
800 <u>Other Objects</u>				
810 Dues and Fees				65.00
Total Other Objects				\$65.00
Total 2650 Vehicle Operation and Maintenance Services (Other Than Student Transportation Vehicles)	\$8,370.54	\$8,820.62		\$29,219.94

LEA : 123465303 Methacton SD

Printed 10/17/2017 3:10:53 PM

General Fund (10)

2660 Safety and Security Services

Elementary

Secondary

Federal

Total

300 Purchased Professional and Technical Services

340 Technical Services

3,243.40

Total Purchased Professional and Technical Services				\$3,243.40
Total 2660 Safety and Security Services				\$3,243.40

LEA : 123465303 Methacton SD

Printed 10/17/2017 3:10:53 PM

General Fund (10)				
2690 Other Operation and Maintenance of Plant Services	<u>Elementary</u>	<u>Secondary</u>	<u>Federal</u>	<u>Total</u>
300 <u>Purchased Professional and Technical Services</u>				
330 Other Professional Services				250.00
390 Other Purchased Professional and Technical Services				247,650.83
Total Purchased Professional and Technical Services				\$247,900.83
400 <u>Purchased Property Services</u>				
410 Cleaning Services				23,867.43
430 Repairs and Maintenance Services				31,994.03
440 Rentals				19,057.74
450 Construction Services				6,964.00
460 Extermination Services				7,739.25
490 Other Purchased Property Services				3,336.00
Total Purchased Property Services				\$92,958.45
500 <u>Other Purchased Services</u>				
580 Travel				3,441.36
Total Other Purchased Services				\$3,441.36
600 <u>Supplies</u>				
610 General Supplies	2,387.68	1,513.13		3,900.81
620 Energy				24.99
Total Supplies	\$2,387.68	\$1,513.13		\$3,925.80
800 <u>Other Objects</u>				
810 Dues and Fees				2,227.00
Total Other Objects				\$2,227.00
Total 2690 Other Operation and Maintenance of Plant Services	\$2,387.68	\$1,513.13		\$350,453.44

LEA : 123465303 Methacton SD

Printed 10/17/2017 3:10:53 PM

General Fund (10)				
2700 Student Transportation Services	<u>Elementary</u>	<u>Secondary</u>	<u>Federal</u>	<u>Total</u>
100 <u>Personnel Services – Salaries</u>				
100 Personnel Services – Salaries				228,457.40
Total Personnel Services – Salaries				\$228,457.40
200 <u>Personnel Services – Employee Benefits</u>				
210 Group Insurance – Contracted Provider				528.58
220 Social Security Contributions				16,804.89
230 PSERS Retirement Contributions				64,607.65
260 Workers' Compensation				4,069.07
270 Group Insurance – Self-Insurance				59,970.82
Total Personnel Services – Employee Benefits				\$145,981.01
300 <u>Purchased Professional and Technical Services</u>				
330 Other Professional Services				53,276.96
Total Purchased Professional and Technical Services				\$53,276.96
500 <u>Other Purchased Services</u>				
511 Student Transportation Services from Another LEA Within the State				15,790.00
513 Contracted Carriers			5,416.08	6,152,510.86
516 Student Transportation Services From the IU				344,537.48
519 Student Transportation Services From Other Sources				3,600.00
Total Other Purchased Services			\$5,416.08	\$6,516,438.34
600 <u>Supplies</u>				
620 Energy				53,935.18
Total Supplies				\$53,935.18
Total 2700 Student Transportation Services			\$5,416.08	\$6,998,088.89

LEA : 123465303 Methacton SD

Printed 10/17/2017 3:10:53 PM

General Fund (10)

2710 Supervision of Student Transportation Services	<u>Elementary</u>	<u>Secondary</u>	<u>Federal</u>	<u>Total</u>
100 <u>Personnel Services – Salaries</u>				
100 Personnel Services – Salaries				13,721.59
Total Personnel Services – Salaries				\$13,721.59
200 <u>Personnel Services – Employee Benefits</u>				
210 Group Insurance – Contracted Provider				22.86
220 Social Security Contributions				1,051.21
230 PSERS Retirement Contributions				1,240.60
260 Workers' Compensation				1,306.44
270 Group Insurance – Self-Insurance				1,497.19
Total Personnel Services – Employee Benefits				\$5,118.30
300 <u>Purchased Professional and Technical Services</u>				
330 Other Professional Services				382.33
Total Purchased Professional and Technical Services				\$382.33
Total 2710 Supervision of Student Transportation Services				\$19,222.22

LEA : 123465303 Methacton SD

Printed 10/17/2017 3:10:53 PM

General Fund (10)

2719 Supervision of Student Transportation Services – All Other Supervision	<u>Elementary</u>	<u>Secondary</u>	<u>Federal</u>	<u>Total</u>
100 <u>Personnel Services – Salaries</u>				
100 Personnel Services – Salaries				13,721.59
Total Personnel Services – Salaries				\$13,721.59
200 <u>Personnel Services – Employee Benefits</u>				
210 Group Insurance – Contracted Provider				22.86
220 Social Security Contributions				1,051.21
230 PSERS Retirement Contributions				1,240.60
260 Workers' Compensation				1,306.44
270 Group Insurance – Self-Insurance				1,497.19
Total Personnel Services – Employee Benefits				\$5,118.30
300 <u>Purchased Professional and Technical Services</u>				
330 Other Professional Services				382.33
Total Purchased Professional and Technical Services				\$382.33
Total 2719 Supervision of Student Transportation Services – All Other Supervision				\$19,222.22

LEA : 123465303 Methacton SD

Printed 10/17/2017 3:10:53 PM

General Fund (10)				
2720 Vehicle Operation Services				
	<u>Elementary</u>	<u>Secondary</u>	<u>Federal</u>	<u>Total</u>
100 <u>Personnel Services – Salaries</u>				
100 Personnel Services – Salaries				181,701.94
Total Personnel Services – Salaries				\$181,701.94
200 <u>Personnel Services – Employee Benefits</u>				
210 Group Insurance – Contracted Provider				429.29
220 Social Security Contributions				13,323.77
230 PSERS Retirement Contributions				54,025.08
260 Workers' Compensation				2,174.26
270 Group Insurance – Self-Insurance				49,802.13
Total Personnel Services – Employee Benefits				\$119,754.53
500 <u>Other Purchased Services</u>				
511 Student Transportation Services from Another LEA Within the State				13,506.84
513 Contracted Carriers			5,416.08	5,081,287.72
516 Student Transportation Services From the IU				294,718.98
Total Other Purchased Services			\$5,416.08	\$5,389,513.54
600 <u>Supplies</u>				
620 Energy				46,136.41
Total Supplies				\$46,136.41
Total 2720 Vehicle Operation Services			\$5,416.08	\$5,737,106.42

LEA : 123465303 Methacton SD

Printed 10/17/2017 3:10:53 PM

General Fund (10)

2740 Vehicle Servicing and Maintenance Services

Elementary

Secondary

Federal

Total

500 Other Purchased Services

513 Contracted Carriers

182,382.07

Total Other Purchased Services				\$182,382.07
Total 2740 Vehicle Servicing and Maintenance Services				\$182,382.07

LEA : 123465303 Methacton SD

Printed 10/17/2017 3:10:53 PM

General Fund (10)				
2750 Nonpublic Transportation	<u>Elementary</u>	<u>Secondary</u>	<u>Federal</u>	<u>Total</u>
100 <u>Personnel Services – Salaries</u>				
100 Personnel Services – Salaries				33,033.87
Total Personnel Services – Salaries				\$33,033.87
200 <u>Personnel Services – Employee Benefits</u>				
210 Group Insurance – Contracted Provider				76.43
220 Social Security Contributions				2,429.91
230 PSERS Retirement Contributions				9,341.97
260 Workers' Compensation				588.37
270 Group Insurance – Self-Insurance				8,671.50
Total Personnel Services – Employee Benefits				\$21,108.18
300 <u>Purchased Professional and Technical Services</u>				
330 Other Professional Services				7,703.60
Total Purchased Professional and Technical Services				\$7,703.60
500 <u>Other Purchased Services</u>				
511 Student Transportation Services from Another LEA Within the State				2,283.16
513 Contracted Carriers				888,841.07
516 Student Transportation Services From the IU				49,818.50
519 Student Transportation Services From Other Sources				520.54
Total Other Purchased Services				\$941,463.27
600 <u>Supplies</u>				
620 Energy				7,798.77
Total Supplies				\$7,798.77
Total 2750 Nonpublic Transportation				\$1,011,107.69

LEA : 123465303 Methacton SD

Printed 10/17/2017 3:10:53 PM

General Fund (10)

2790 Other Student Transportation Services	<u>Elementary</u>	<u>Secondary</u>	<u>Federal</u>	<u>Total</u>
300 <u>Purchased Professional and Technical Services</u>				
330 Other Professional Services				45,191.03
Total Purchased Professional and Technical Services				\$45,191.03
500 <u>Other Purchased Services</u>				
519 Student Transportation Services From Other Sources				3,079.46
Total Other Purchased Services				\$3,079.46
Total 2790 Other Student Transportation Services				\$48,270.49

LEA : 123465303 Methacton SD

Printed 10/17/2017 3:10:53 PM

General Fund (10)				
2800 Support Services – Central	<u>Elementary</u>	<u>Secondary</u>	<u>Federal</u>	<u>Total</u>
100 <u>Personnel Services – Salaries</u>				
100 Personnel Services – Salaries				714,994.26
Total Personnel Services – Salaries				\$714,994.26
200 <u>Personnel Services – Employee Benefits</u>				
210 Group Insurance – Contracted Provider				1,372.63
220 Social Security Contributions				51,069.27
230 PSERS Retirement Contributions				211,443.79
240 Tuition Reimbursement				79,942.60
260 Workers' Compensation				6,951.97
270 Group Insurance – Self-Insurance				159,237.39
299 All Other Employee Benefits				2,000.00
Total Personnel Services – Employee Benefits				\$512,017.65
400 <u>Purchased Property Services</u>				
430 Repairs and Maintenance Services				40,108.78
440 Rentals				202,204.09
Total Purchased Property Services				\$242,312.87
500 <u>Other Purchased Services</u>				
530 Communications				64,069.84
580 Travel			1,229.37	4,959.48
Total Other Purchased Services			\$1,229.37	\$69,029.32
600 <u>Supplies</u>				
610 General Supplies				457,073.89
Total Supplies				\$457,073.89
700 <u>Property</u>				
752 Capital Equipment – Original and Additional				35,962.29
Total Property				\$35,962.29
800 <u>Other Objects</u>				
810 Dues and Fees			100.00	256.25
Total Other Objects			\$100.00	\$256.25
Total 2800 Support Services – Central			\$1,329.37	\$2,031,646.53

LEA : 123465303 Methacton SD

Printed 10/17/2017 3:10:53 PM

General Fund (10)

2810 Planning, Research, Development and Evaluation Services	<u>Elementary</u>	<u>Secondary</u>	<u>Federal</u>	<u>Total</u>
100 <u>Personnel Services – Salaries</u>				
100 Personnel Services – Salaries				714,994.26
Total Personnel Services – Salaries				\$714,994.26
200 <u>Personnel Services – Employee Benefits</u>				
210 Group Insurance – Contracted Provider				1,372.63
220 Social Security Contributions				51,069.27
230 PSERS Retirement Contributions				211,443.79
260 Workers' Compensation				6,951.97
270 Group Insurance – Self-Insurance				159,237.39
299 All Other Employee Benefits				2,000.00
Total Personnel Services – Employee Benefits				\$432,075.05
400 <u>Purchased Property Services</u>				
430 Repairs and Maintenance Services				40,108.78
440 Rentals				4,118.13
Total Purchased Property Services				\$44,226.91
500 <u>Other Purchased Services</u>				
580 Travel				3,730.11
Total Other Purchased Services				\$3,730.11
600 <u>Supplies</u>				
610 General Supplies				457,073.89
Total Supplies				\$457,073.89
700 <u>Property</u>				
752 Capital Equipment – Original and Additional				35,962.29
Total Property				\$35,962.29
800 <u>Other Objects</u>				
810 Dues and Fees				156.25
Total Other Objects				\$156.25
Total 2810 Planning, Research, Development and Evaluation Services				\$1,688,218.76

LEA : 123465303 Methacton SD

Printed 10/17/2017 3:10:53 PM

General Fund (10)				
2830 Staff Services	<u>Elementary</u>	<u>Secondary</u>	<u>Federal</u>	<u>Total</u>
200 <u>Personnel Services – Employee Benefits</u>				
240 Tuition Reimbursement				79,942.60
Total Personnel Services – Employee Benefits				\$79,942.60
Total 2830 Staff Services				\$79,942.60

LEA : 123465303 Methacton SD

Printed 10/17/2017 3:10:53 PM

General Fund (10)

2834 Staff Development Services – Non-Instructional, Certified Staff Only	<u>Elementary</u>	<u>Secondary</u>	<u>Federal</u>	<u>Total</u>
200 <u>Personnel Services – Employee Benefits</u>				
240 Tuition Reimbursement				78,040.00
Total Personnel Services – Employee Benefits				\$78,040.00
Total 2834 Staff Development Services – Non-Instructional, Certified Staff Only				\$78,040.00

LEA : 123465303 Methacton SD

Printed 10/17/2017 3:10:53 PM

General Fund (10)

2836 Staff Development Services – Non-Instructional, Non-Certified Staff Only	<u>Elementary</u>	<u>Secondary</u>	<u>Federal</u>	<u>Total</u>
200 <u>Personnel Services – Employee Benefits</u>				
240 Tuition Reimbursement				1,902.60
Total Personnel Services – Employee Benefits				\$1,902.60
Total 2836 Staff Development Services – Non-Instructional, Non-Certified Staff Only				\$1,902.60

Page 116

LEA : 123465303 Methacton SD

Printed 10/17/2017 3:10:53 PM

General Fund (10)

2850 State and Federal Agency Liaison Services	<u>Elementary</u>	<u>Secondary</u>	<u>Federal</u>	<u>Total</u>
500 <u>Other Purchased Services</u>				
580 Travel			1,229.37	1,229.37
Total Other Purchased Services			\$1,229.37	\$1,229.37
800 <u>Other Objects</u>				
810 Dues and Fees			100.00	100.00
Total Other Objects			\$100.00	\$100.00
Total 2850 State and Federal Agency Liaison Services			\$1,329.37	\$1,329.37

LEA : 123465303 Methacton SD

Printed 10/17/2017 3:10:53 PM

General Fund (10)

2890 Other Support Services Central	<u>Elementary</u>	<u>Secondary</u>	<u>Federal</u>	<u>Total</u>
500 <u>Other Purchased Services</u>				
530 Communications				64,069.84
Total Other Purchased Services				\$64,069.84
Total 2890 Other Support Services Central				\$64,069.84

LEA : 123465303 Methacton SD

Printed 10/17/2017 3:10:53 PM

General Fund (10)

2900 Other Support Services

Elementary Secondary Federal Total

500 Other Purchased Services

595 IU Payments By Withholding 69,414.01

596 Direct Payments To Intermediate Units 5,326.00

Total Other Purchased Services				\$74,740.01
Total 2900 Other Support Services				\$74,740.01

LEA : 123465303 Methacton SD

Printed 10/17/2017 3:10:53 PM

General Fund (10)

2910 Support Services Not Listed Elsewhere In the 2000 Series

Elementary Secondary Federal Total

500 <u>Other Purchased Services</u>				
595 IU Payments By Withholding				69,414.01
596 Direct Payments To Intermediate Units				5,326.00
Total Other Purchased Services				\$74,740.01
Total 2910 Support Services Not Listed Elsewhere In the 2000 Series				\$74,740.01

LEA : 123465303 Methacton SD

Printed 10/17/2017 3:10:59 PM

General Fund (10)

3000 Operation of Non-Instructional Services		<u>Total</u>
100	<u>Personnel Services – Salaries</u>	
100	Personnel Services – Salaries	787,715.84
Total Personnel Services – Salaries		\$787,715.84
200	<u>Personnel Services – Employee Benefits</u>	
220	Social Security Contributions	60,052.90
230	PSERS Retirement Contributions	205,613.62
Total Personnel Services – Employee Benefits		\$265,666.52
300	<u>Purchased Professional and Technical Services</u>	
323	Professional Educational Services – Other Educational Agencies	200.00
329	Professional Educational Services – Other	4,491.99
330	Other Professional Services	76,025.46
390	Other Purchased Professional and Technical Services	955.00
Total Purchased Professional and Technical Services		\$81,672.45
400	<u>Purchased Property Services</u>	
410	Cleaning Services	13,516.64
430	Repairs and Maintenance Services	993.00
440	Rentals	1,973.00
Total Purchased Property Services		\$16,482.64
500	<u>Other Purchased Services</u>	
510	Student Transportation Services	5,245.64
520	Insurance – General	5,898.00
549	Other Advertising/Public Relations	300.00
550	Printing and Binding	127.00
580	Travel	15,579.66
591	Services Purchased Locally	46,711.50
592	Services Purchased From Another LEA Within the State	9,550.00
593	Services Purchased From Another LEA Outside the State	2,701.67
Total Other Purchased Services		\$86,113.47
600	<u>Supplies</u>	
610	General Supplies	101,403.14
630	Food	288.90
640	Books and Periodicals	257.50
Total Supplies		\$101,949.54
700	<u>Property</u>	
762	Capitalized Equipment - Replacement	5,074.00
Total Property		\$5,074.00
800	<u>Other Objects</u>	
810	Dues and Fees	36,918.76
890	Miscellaneous Expenditures	10,760.28
Total Other Objects		\$47,679.04
Total 3000 Operation of Non-Instructional Services		\$1,392,353.50

LEA : 123465303 Methacton SD

Printed 10/17/2017 3:10:59 PM

General Fund (10)				
3200 Student Activities	<u>Elementary</u>	<u>Secondary</u>	<u>Federal</u>	<u>Total</u>
100 <u>Personnel Services – Salaries</u>				
100 Personnel Services – Salaries				787,715.84
Total Personnel Services – Salaries				\$787,715.84
200 <u>Personnel Services – Employee Benefits</u>				
220 Social Security Contributions				60,052.90
230 PSERS Retirement Contributions				205,613.62
Total Personnel Services – Employee Benefits				\$265,666.52
300 <u>Purchased Professional and Technical Services</u>				
329 Professional Educational Services – Other				4,491.99
330 Other Professional Services				76,025.46
390 Other Purchased Professional and Technical Services				955.00
Total Purchased Professional and Technical Services				\$81,472.45
400 <u>Purchased Property Services</u>				
410 Cleaning Services				13,516.64
430 Repairs and Maintenance Services				993.00
440 Rentals				1,973.00
Total Purchased Property Services				\$16,482.64
500 <u>Other Purchased Services</u>				
510 Student Transportation Services				5,245.64
520 Insurance – General				5,898.00
549 Other Advertising/Public Relations				300.00
550 Printing and Binding				127.00
580 Travel				15,271.66
591 Services Purchased Locally				46,711.50
592 Services Purchased From Another LEA Within the State				9,550.00
593 Services Purchased From Another LEA Outside the State				2,701.67
Total Other Purchased Services				\$85,805.47
600 <u>Supplies</u>				
610 General Supplies				100,833.58
640 Books and Periodicals				120.50
Total Supplies				\$100,954.08
700 <u>Property</u>				
762 Capitalized Equipment - Replacement				5,074.00
Total Property				\$5,074.00
800 <u>Other Objects</u>				
810 Dues and Fees				36,918.76
890 Miscellaneous Expenditures				10,760.28
Total Other Objects				\$47,679.04
Total 3200 Student Activities				\$1,390,850.04

LEA : 123465303 Methacton SD

Printed 10/17/2017 3:10:59 PM

General Fund (10)

3300 Community Services

Elementary Secondary Federal Total

300 Purchased Professional and Technical Services

323 Professional Educational Services – Other Educational Agencies 200.00 200.00

Total Purchased Professional and Technical Services \$200.00 \$200.00

500 Other Purchased Services

580 Travel 308.00 308.00

Total Other Purchased Services \$308.00 \$308.00

600 Supplies

610 General Supplies 69.56 569.56

630 Food 288.90

640 Books and Periodicals 137.00 137.00

Total Supplies \$206.56 \$995.46

Total 3300 Community Services \$714.56 \$1,503.46

LEA : 123465303 Methacton SD

Printed 10/17/2017 3:11:02 PM

General Fund (10)

5000 Other Expenditures and Financing Uses		<u>Total</u>
800 <u>Other Objects</u>		
830 Interest		2,298,248.97
880 Refunds of Prior Years' Receipts		18,317.64
Total Other Objects		\$2,316,566.61
900 <u>Other Uses of Funds</u>		
910 Redemption of Principal		7,262,634.28
939 Other Fund Transfers		300,000.00
Total Other Uses of Funds		\$7,562,634.28
Total 5000 Other Expenditures and Financing Uses		\$9,879,200.89

LEA : 123465303 Methacton SD

Printed 10/17/2017 3:11:02 PM

General Fund (10)

5100 Debt Service / Other Expenditures and Financing Uses	<u>Elementary</u>	<u>Secondary</u>	<u>Federal</u>	<u>Total</u>
800 <u>Other Objects</u>				
830 Interest				2,298,248.97
880 Refunds of Prior Years' Receipts				18,317.64
Total Other Objects				\$2,316,566.61
900 <u>Other Uses of Funds</u>				
910 Redemption of Principal				7,262,634.28
Total Other Uses of Funds				\$7,262,634.28
Total 5100 Debt Service / Other Expenditures and Financing Uses				\$9,579,200.89

LEA : 123465303 Methacton SD

Printed 10/17/2017 3:11:02 PM

General Fund (10)				
5110 Debt Service	<u>Elementary</u>	<u>Secondary</u>	<u>Federal</u>	<u>Total</u>
800 <u>Other Objects</u>				
830 Interest				2,298,248.97
Total Other Objects				\$2,298,248.97
900 <u>Other Uses of Funds</u>				
910 Redemption of Principal				7,262,634.28
Total Other Uses of Funds				\$7,262,634.28
Total 5110 Debt Service				\$9,560,883.25

LEA : 123465303 Methacton SD

Printed 10/17/2017 3:11:02 PM

General Fund (10)

5130 Refund of Prior Year Revenues / Receipts	<u>Elementary</u>	<u>Secondary</u>	<u>Federal</u>	<u>Total</u>
800 <u>Other Objects</u>				
880 Refunds of Prior Years' Receipts				18,317.64
Total Other Objects				\$18,317.64
Total 5130 Refund of Prior Year Revenues / Receipts				\$18,317.64

LEA : 123465303 Methacton SD

Printed 10/17/2017 3:11:02 PM

General Fund (10)

5200 Interfund Transfers – Out	<u>Elementary</u>	<u>Secondary</u>	<u>Federal</u>	<u>Total</u>
900 <u>Other Uses of Funds</u>				
939 Other Fund Transfers				300,000.00
Total Other Uses of Funds				\$300,000.00
Total 5200 Interfund Transfers – Out				\$300,000.00

LEA : 123465303 Methacton SD

Printed 10/17/2017 3:11:02 PM

General Fund (10)

5230 Capital Projects Fund Transfers	<u>Elementary</u>	<u>Secondary</u>	<u>Federal</u>	<u>Total</u>
900 <u>Other Uses of Funds</u>				
939 Other Fund Transfers				300,000.00
Total Other Uses of Funds				\$300,000.00
Total 5230 Capital Projects Fund Transfers				\$300,000.00

LEA : 123465303 Methacton SD

Printed 10/17/2017 3:10:58 PM

Other Capital Projects Fund (39)

2000 Support Services		<u>Total</u>
500 <u>Other Purchased Services</u>		
550 Printing and Binding	8,788.00	
Total Other Purchased Services	\$8,788.00	
800 <u>Other Objects</u>		
810 Dues and Fees	770.54	
Total Other Objects	\$770.54	
Total 2000 Support Services	\$9,558.54	

LEA : 123465303 Methacton SD

Printed 10/17/2017 3:10:58 PM

Other Capital Projects Fund (39)

2300 Support Services – Administration

Elementary Secondary Federal Total

500 <u>Other Purchased Services</u>				
550 Printing and Binding				8,788.00
Total Other Purchased Services				\$8,788.00
800 <u>Other Objects</u>				
810 Dues and Fees				393.54
Total Other Objects				\$393.54
Total 2300 Support Services – Administration				\$9,181.54

LEA : 123465303 Methacton SD

Printed 10/17/2017 3:10:58 PM

Other Capital Projects Fund (39)

2310 Board Services	<u>Elementary</u>	<u>Secondary</u>	<u>Federal</u>	<u>Total</u>
500 <u>Other Purchased Services</u>				
550 Printing and Binding				8,788.00
Total Other Purchased Services				\$8,788.00
800 <u>Other Objects</u>				
810 Dues and Fees				393.54
Total Other Objects				\$393.54
Total 2310 Board Services				\$9,181.54

[illegible][illegible][illegible]

377.00

\$377.00

\$377.00

LEA : 123465303 Methacton SD

Printed 10/17/2017 3:10:58 PM

Other Capital Projects Fund (39)

2510 Fiscal Services	<u>Elementary</u>	<u>Secondary</u>	<u>Federal</u>	<u>Total</u>
800 <u>Other Objects</u>				
810 Dues and Fees				377.00
Total Other Objects				\$377.00
Total 2510 Fiscal Services				\$377.00

LEA : 123465303 Methacton SD

Printed 10/17/2017 3:10:58 PM

Other Capital Projects Fund (39)

2515 Financial Accounting Services

	<u>Elementary</u>	<u>Secondary</u>	<u>Federal</u>	<u>Total</u>
800 <u>Other Objects</u>				
810 Dues and Fees				377.00
Total Other Objects				\$377.00
Total 2515 Financial Accounting Services				\$377.00

LEA : 123465303 Methacton SD

Printed 10/17/2017 3:11:01 PM

Other Capital Projects Fund (39)

4000 Facilities Acquisition, Construction and Improvement Services		<u>Total</u>
300 <u>Purchased Professional and Technical Services</u>		
330 Other Professional Services	236,037.63	
Total Purchased Professional and Technical Services	\$236,037.63	
400 <u>Purchased Property Services</u>		
450 Construction Services	263,197.42	
Total Purchased Property Services	\$263,197.42	
500 <u>Other Purchased Services</u>		
549 Other Advertising/Public Relations	1,903.72	
Total Other Purchased Services	\$1,903.72	
600 <u>Supplies</u>		
610 General Supplies	30,043.35	
Total Supplies	\$30,043.35	
700 <u>Property</u>		
752 Capital Equipment – Original and Additional	19,900.00	
Total Property	\$19,900.00	
Total 4000 Facilities Acquisition, Construction and Improvement Services	\$551,082.12	

LEA : 123465303 Methacton SD

Printed 10/17/2017 3:11:01 PM

Other Capital Projects Fund (39)

4200 Existing Site Improvement Services

Elementary Secondary Federal Total

300 Purchased Professional and Technical Services

330 Other Professional Services 236,037.63

Total Purchased Professional and Technical Services \$236,037.63

400 Purchased Property Services

450 Construction Services 4,501.50

Total Purchased Property Services \$4,501.50

500 Other Purchased Services

549 Other Advertising/Public Relations 1,903.72

Total Other Purchased Services \$1,903.72

600 Supplies

610 General Supplies 30,043.35

Total Supplies \$30,043.35

Total 4200 Existing Site Improvement Services \$272,486.20

LEA : 123465303 Methacton SD

Printed 10/17/2017 3:11:01 PM

Other Capital Projects Fund (39)

4600 Existing Building Improvement Services

Elementary

Secondary

Federal

Total

400 Purchased Property Services

450 Construction Services

258,695.92

Total Purchased Property Services

\$258,695.92

700 Property

752 Capital Equipment – Original and Additional

19,900.00

Total Property

\$19,900.00

Total 4600 Existing Building Improvement Services

\$278,595.92

LEA : 123465303 Methacton SD

Printed 10/17/2017 3:11:03 PM

Other Capital Projects Fund (39)

5000 Other Expenditures and Financing Uses

Total

800 <u>Other Objects</u>	
830 Interest	11,566.57
Total Other Objects	\$11,566.57
900 <u>Other Uses of Funds</u>	
930 Fund Transfers	871.95
Total Other Uses of Funds	\$871.95
Total 5000 Other Expenditures and Financing Uses	\$12,438.52

LEA : 123465303 Methacton SD

Printed 10/17/2017 3:11:03 PM

Other Capital Projects Fund (39)

5100 Debt Service / Other Expenditures and Financing Uses	<u>Elementary</u>	<u>Secondary</u>	<u>Federal</u>	<u>Total</u>
800 <u>Other Objects</u>				
830 Interest				11,566.57
Total Other Objects				\$11,566.57
Total 5100 Debt Service / Other Expenditures and Financing Uses				\$11,566.57

LEA : 123465303 Methacton SD

Printed 10/17/2017 3:11:03 PM

Other Capital Projects Fund (39)

5110 Debt Service	<u>Elementary</u>	<u>Secondary</u>	<u>Federal</u>	<u>Total</u>
800 <u>Other Objects</u>				
830 Interest				11,566.57
Total Other Objects				\$11,566.57
Total 5110 Debt Service				\$11,566.57

LEA : 123465303 Methacton SD

Printed 10/17/2017 3:11:03 PM

Other Capital Projects Fund (39)

5200 Interfund Transfers – Out

<u>Elementary</u>	<u>Secondary</u>	<u>Federal</u>	<u>Total</u>
-------------------	------------------	----------------	--------------

900 Other Uses of Funds

930 Fund Transfers				871.95
--------------------	--	--	--	--------

Total Other Uses of Funds				\$871.95
----------------------------------	--	--	--	-----------------

Total 5200 Interfund Transfers – Out				\$871.95
---	--	--	--	-----------------

LEA : 123465303 Methacton SD

Printed 10/17/2017 3:11:03 PM

Other Capital Projects Fund (39)

5210 General Fund Transfers

Elementary Secondary Federal Total

900 Other Uses of Funds

930 Fund Transfers 871.95

Total Other Uses of Funds \$871.95

Total 5210 General Fund Transfers \$871.95

LEA : 123465303 Methacton SD

Printed 10/17/2017 3:11:05 PM

	<u>General Fund(10)</u>	<u>Public Purpose Trust(27)</u>	<u>Other Compt Approved</u> <u>(28)</u>	<u>Athletic / Activity(29)</u>	<u>Capital Reserve (690.</u> <u>1850)(31)</u>
1000 <u>Instruction</u>					
1100 Regular Programs - Elementary / Secondary	40,970,092.01				
1200 Special Programs - Elementary / Secondary	15,340,215.12				
1300 Vocational Education	2,457,384.53				
1400 Other Instructional Programs - Elementary / Secondary	355,328.83				
1500 Nonpublic School Programs	1,282.10				
1600 Adult Education Programs	149,435.94				
Total Instruction	\$59,273,738.53				
2000 <u>Support Services</u>					
2100 Support Services - Students	4,351,406.66				
2200 Support Services - Instructional Staff	2,491,301.79				
2300 Support Services - Administration	6,384,630.52				
2400 Support Services - Pupil Health	1,653,980.68				
2500 Support Services - Business	969,237.06				
2600 Operation and Maintenance of Plant Services	8,192,354.53				
2700 Student Transportation Services	6,998,088.89				
2800 Support Services - Central	2,031,646.53				
2900 Other Support Services	74,740.01				
Total Support Services	\$33,147,386.67				
3000 <u>Operation of Non-Instructional Services</u>					
3200 Student Activities	1,390,850.04				
3300 Community Services	1,503.46				
Total Operation of Non-Instructional Services	\$1,392,353.50				
4000 <u>Facilities Acquisition, Construction and Improvement Services</u>					
4200 Existing Site Improvement Services					
4600 Existing Building Improvement Services					
Total Facilities Acquisition, Construction and Improvement Services					
5000 <u>Other Expenditures and Financing Uses</u>					
5100 Debt Service / Other Expenditures and Financing Uses	9,579,200.89				
5200 Interfund Transfers - Out	300,000.00				
Total Other Expenditures and Financing Uses	\$9,879,200.89				
TOTAL ACTUAL EXPENDITURES & OTHER FINANCING USES	\$103,692,679.59				

LEA : 123465303 Methacton SD

Printed 10/17/2017 3:11:05 PM

	<u>Capital Reserve (1431)(32)</u>	<u>Other Capital Projects Fund(39)</u>	<u>Debt Service(40)</u>	<u>Permanent(90)</u>	<u>Total</u>
1000 <u>Instruction</u>					
1100 Regular Programs - Elementary / Secondary					40,970,092.01
1200 Special Programs - Elementary / Secondary					15,340,215.12
1300 Vocational Education					2,457,384.53
1400 Other Instructional Programs - Elementary / Secondary					355,328.83
1500 Nonpublic School Programs					1,282.10
1600 Adult Education Programs					149,435.94
Total Instruction					\$59,273,738.53
2000 <u>Support Services</u>					
2100 Support Services - Students					4,351,406.66
2200 Support Services - Instructional Staff					2,491,301.79
2300 Support Services - Administration		9,181.54			6,393,812.06
2400 Support Services - Pupil Health					1,653,980.68
2500 Support Services - Business		377.00			969,614.06
2600 Operation and Maintenance of Plant Services					8,192,354.53
2700 Student Transportation Services					6,998,088.89
2800 Support Services - Central					2,031,646.53
2900 Other Support Services					74,740.01
Total Support Services		\$9,558.54			\$33,156,945.21
3000 <u>Operation of Non-Instructional Services</u>					
3200 Student Activities					1,390,850.04
3300 Community Services					1,503.46
Total Operation of Non-Instructional Services					\$1,392,353.50
4000 <u>Facilities Acquisition, Construction and Improvement Services</u>					
4200 Existing Site Improvement Services		272,486.20			272,486.20
4600 Existing Building Improvement Services		278,595.92			278,595.92
Total Facilities Acquisition, Construction and Improvement Services		\$551,082.12			\$551,082.12
5000 <u>Other Expenditures and Financing Uses</u>					
5100 Debt Service / Other Expenditures and Financing Uses		11,566.57			9,590,767.46
5200 Interfund Transfers - Out		871.95			300,871.95
Total Other Expenditures and Financing Uses		\$12,438.52			\$9,891,639.41
TOTAL ACTUAL EXPENDITURES & OTHER FINANCING USES		\$573,079.18			\$104,265,758.77

LEA : 123465303 Methacton SD

Printed 10/17/2017 3:11:27 PM

PSERS Salary Data (Salary Data should relate to the General Fund only)

Amount	Description	Amount
	Total Salary Base for salaries subject to PSERS withholding	41,410,474.27
	Total Federally Funded salaries subject to PSERS withholding	1,125,496.99

Title I Expenditure Data

Amount	Description	Amount
	Expenditures Funded with Current Title I Funds	347,070.18
	Expenditures Funded with Carry over Title I Funds	
Total	Title I Expenditure Data	\$347,070.18

Title I ARRA Amount

Amount	Description	Amount
	Portion of Total Title I Expenditures funded with ARRA Title I	

Benefits for Staff Relative to Collective Bargaining Agreements

	OBJECT	COVERED	NOT COVERED	TOTAL
10 General Fund				
	211 Medical Insurance			
	212 Dental Insurance			
	215 Eye Care Insurance	36,709.11		36,709.11
	216 Prescription Insurance			
	271 Self-Insurance Medical Benefits	7,461,318.05		7,461,318.05
	272 Self-Insurance Dental Benefits	346,416.01		346,416.01
	275 Self-Insurance Eye Care Benefits			
	276 Self-Insurance Prescription Benefits	1,949,620.24		1,949,620.24
	FUND TOTAL	\$9,794,063.41		\$9,794,063.41
50 Enterprise Fund	No Self Insurance data to report			
	211 Medical Insurance			
	212 Dental Insurance			
	215 Eye Care Insurance			
	216 Prescription Insurance			
	271 Self-Insurance Medical Benefits			
	272 Self-Insurance Dental Benefits			
	275 Self-Insurance Eye Care Benefits			
	276 Self-Insurance Prescription Benefits			
	FUND TOTAL			
60 Internal Service Fund	No Self Insurance data to report			
	211 Medical Insurance			
	212 Dental Insurance			
	215 Eye Care Insurance			
	216 Prescription Insurance			
	271 Self-Insurance Medical Benefits			
	272 Self-Insurance Dental Benefits			
	275 Self-Insurance Eye Care Benefits			
	276 Self-Insurance Prescription Benefits			
	FUND TOTAL			
Total of All Funds		\$9,794,063.41		\$9,794,063.41

LEA : 123465303 Methacton SD

Printed 10/17/2017 3:11:29 PM

Function	Special Education (Prior Year)	Nonspecial Education (Prior Year)	Total (Prior Year)	Special Education (Current Year)	Nonspecial Education (Current Year)	Total (Current Year)
2120 Guidance Services	228,431.26	2,055,881.36	2,284,312.62	247,717.76	2,229,459.79	2,477,177.55
2140 Psychological Services	405,277.02	101,319.26	506,596.28	429,916.21	107,479.05	537,395.26
2150 Speech Pathology and Audiology Services						
2160 Social Work Services	6,925.00	131,575.00	138,500.00	7,271.25	138,153.75	145,425.00
2260 Instruction and Curriculum Development Services	23,460.46	445,748.66	469,209.12	24,507.69	465,646.17	490,153.86
2350 Legal and Accounting Services	103,831.99	144,417.65	248,249.64	175,233.31	163,621.14	338,854.45
2420 Medical Services	518,917.58	57,657.51	576,575.09	386,332.42	42,925.82	429,258.24
2440 Nursing Services	112,871.91	1,015,847.20	1,128,719.11	122,443.75	1,101,993.74	1,224,437.49
2700 Student Transportation Services	667,591.02	6,008,319.16	6,675,910.18	699,808.89	6,298,280.00	6,998,088.89
Total	\$2,067,306.24	\$9,960,765.80	\$12,028,072.04	\$2,093,231.28	\$10,547,559.46	\$12,640,790.74

LEA : 123465303 Methacton SD

Printed 10/17/2017 3:11:31 PM

(PRINCIPAL AMOUNTS ONLY)

GOVERNMENTAL FUNDS/ ACTIVITIES

	Short-Term Borrowing	General Obligation Bonds/Notes	Authority Building Obligations	Other Long-Term Debt	Other Post- Employment Benefits (OPEB)	Compensated Absences	Net Pension Liability	Total
1. Debt at Beginning of Fiscal Year		80,405,000.00		2,290,598.00	4,719,684.00	2,520,122.00	141,814,000.00	231,749,404.00
2. Additional Debt Incurred During Year				16,712.00	709,680.00		22,170,000.00	22,896,392.00
3. Retirements and Repayments		7,120,000.00		142,635.00		76,305.00		7,338,940.00
4. Debt at End of Fiscal Year		73,285,000.00		2,164,675.00	5,429,364.00	2,443,817.00	163,984,000.00	247,306,856.00
5. Accreted Interest at End Of Fiscal Year								
6. Total Debt and Accreted Interest		73,285,000.00		2,164,675.00	5,429,364.00	2,443,817.00	163,984,000.00	247,306,856.00
7. Current Portion P&I - Due within 1 year		9,532,860.52		200,236.00		122,191.00		9,855,287.52
8. Interest Paid during current fiscal year		2,256,559.00		53,258.00				2,309,817.00

(PRINCIPAL AMOUNTS ONLY)

PROPRIETARY FUNDS

1. Debt at Beginning of Fiscal Year
2. Additional Debt Incurred During Year
3. Retirements and Repayments
4. Debt at End of Fiscal Year
5. Accreted Interest at End Of Fiscal Year
6. Total Debt and Accreted Interest
7. Current Portion P&I - Due within 1 year
8. Interest Paid during current fiscal year

LEA : 123465303 Methacton SD

Printed 10/17/2017 3:11:31 PM

Total Principal and Interest Payments Made by Your School - All Funds

Function	Fund		Principal (910)	Principal (920)	Interest (830)	Total (Principal +Interest)	Misc Other Uses (990)
5110	10	General Fund	7,262,634.28		2,298,248.97	9,560,883.25	
5110	20	Special Revenue Funds					
5110	30	Capital Projects Funds			11,566.57	11,566.57	
5110	40	Debt Service Fund					
5110	90	Permanent Fund					
5120	10	General Fund					
5120	20	Special Revenue Funds					
5120	30	Capital Projects Funds					
5120	40	Debt Service Fund					
Total Debt Payments - Governmental Funds			\$7,262,634.28		\$2,309,815.54	\$9,572,449.82	

Function	Fund		Principal (910)	Principal (920)	Interest (830)	Total (Principal +Interest)
5110	50	Enterprise Fund				
5110	60	Internal Service Fund				
5120	50	Enterprise Fund				
5120	60	Internal Service Fund				
Total Debt Payments - Proprietary Funds						

LEA : 123465303 Methacton SD

Printed 10/17/2017 3:11:31 PM

Debt Details
Governmental Funds/ Activities

Debt Category	Debt Issue Date (MM/YYYY)	Principal Amounts Only				Current Portion Due Within One Year (Principal and Interest)	Interest Paid During Fiscal Year
		Debt at Beginning of Fiscal Year	Additions	Reductions / Repayments	Debt at End of Fiscal Year		
General Obligation Bonds/Notes – CIB	03/2016	28,080,000.00		135,000.00	27,945,000.00	1,203,850.00	1,061,770.00
General Obligation Bonds/Notes – CIB	01/2015	5,490,000.00		5,000.00	5,485,000.00	224,283.00	107,442.00
General Obligation Bonds/Notes – CIB	05/2015	2,935,000.00		475,000.00	2,460,000.00	561,525.00	98,400.00
General Obligation Bonds/Notes – CIB	05/2015	1,925,000.00		175,000.00	1,750,000.00	266,750.00	56,725.00
General Obligation Bonds/Notes – CIB	06/2013	4,215,000.00		5,000.00	4,210,000.00	104,092.50	99,138.00
General Obligation Bonds/Notes – CIB	06/2013	5,470,000.00		5,000.00	5,465,000.00	194,100.00	189,145.00
General Obligation Bonds/Notes – CIB	06/2013	2,525,000.00		5,000.00	2,520,000.00	80,783.76	75,829.00
General Obligation Bonds/Notes – CIB	10/2012	1,500,000.00			1,500,000.00	60,000.00	25,478.00
General Obligation Bonds/Notes – CIB	12/2012	6,300,000.00		835,000.00	5,465,000.00	939,050.00	105,631.00
General Obligation Bonds/Notes – CIB	12/2012	5,860,000.00		1,930,000.00	3,930,000.00	1,970,325.00	84,650.00
General Obligation Bonds/Notes – CIB	06/2012	7,935,000.00		2,615,000.00	5,320,000.00	2,796,050.00	156,950.00
General Obligation Bonds/Notes – CIB	09/2011	8,170,000.00		935,000.00	7,235,000.00	1,132,051.26	195,401.00
Other Long Term Debt/Liabilities		2,290,598.00	16,712.00	142,635.00	2,164,675.00	200,236.00	53,258.00
Compensated Absences		2,520,122.00		76,305.00	2,443,817.00	122,191.00	
Other Post-Employment Benefits (OPEB)		4,719,684.00	709,680.00		5,429,364.00		
Net Pension Liability		141,814,000.00	22,170,000.00		163,984,000.00		
Totals for Debt Entered:		\$231,749,404.00	\$22,896,392.00	\$7,338,940.00	\$247,306,856.00	\$9,855,287.52	\$2,309,817.00

LEA : 123465303 Methacton SD

Printed 10/17/2017 3:11:32 PM

General Fund (10)

Section 1: Tuition/Purchased Services as Reported within Expenditure Detail	Amount
Tuition Reported in General Fund Expenditures 1000-560	3,415,377.46
Purchased Services in General Fund Expenditures 1000-594 and 1000-597	
Section 1 Total	\$3,415,377.46

Section 2: Tuition Paid to Institution Types During Fiscal Year	Tuition Paid For Nonspecial Education	Tuition Paid For Special Education	Total
1 1306 Institutions			
2 Institutionalized Children's Programs			
3 Juveniles Incarcerated in Adult Facilities			
4 Residential Treatment Facilities			
5 Other Local Education Agencies	108,415.90	129,469.78	237,885.68
6 Brick and Mortar Charter Schools	281,265.40	220,298.45	501,563.85
7 Cyber Charter Schools	409,298.09	195,211.54	604,509.63
8 Career and Technology Centers	1,302,235.82	4,793.88	1,307,029.70
9 Approved Private Schools		387,985.55	387,985.55
10 PA Chartered Schools for the Deaf and Blind			
11 Private Residential Rehabilitative Institutions	2,279.15	330,427.90	332,707.05
12 Juvenile Detention Centers	7,393.00		7,393.00
13 Special Program Jointures			
14 Other Tuition Not Included Elsewhere In This Section		36,303.00	36,303.00
Section 2 Total	\$2,110,887.36	\$1,304,490.10	\$3,415,377.46

LEA : 123465303 Methacton SD

Printed 10/17/2017 3:11:32 PM

Food Service / Cafeteria Operations Fund (51)

3000 Operation of Non-Instructional Services

Total

500	<u>Other Purchased Services</u>	
570	Food Service Management	1,337,170.00
Total Other Purchased Services		\$1,337,170.00
600	<u>Supplies</u>	
610	General Supplies	5,679.00
630	Food	76,937.00
Total Supplies		\$82,616.00
700	<u>Property</u>	
740	Depreciation	5,555.92
Total Property		\$5,555.92
Total 3000 Operation of Non-Instructional Services		\$1,425,341.92

LEA : 123465303 Methacton SD

Printed 10/17/2017 3:11:32 PM

Food Service / Cafeteria Operations Fund (51)

3100 Food Services	<u>Elementary</u>	<u>Secondary</u>	<u>Federal</u>	<u>Total</u>
500 <u>Other Purchased Services</u>				
570 Food Service Management				1,337,170.00
Total Other Purchased Services				\$1,337,170.00
600 <u>Supplies</u>				
610 General Supplies				5,679.00
630 Food				76,937.00
Total Supplies				\$82,616.00
700 <u>Property</u>				
740 Depreciation				5,555.92
Total Property				\$5,555.92
Total 3100 Food Services				\$1,425,341.92

	<u>Food Service(51)</u>	<u>Child Care Operations(52)</u>	<u>Other Enterprise(58)</u>	<u>Internal Service(60)</u>	<u>Total</u>
3000 <u>Operation of Non-Instructional Services</u>					
3100 Food Services	1,425,341.92				1,425,341.92
Total Operation of Non-Instructional Services	\$1,425,341.92				\$1,425,341.92
TOTAL ACTUAL EXPENDITURES & OTHER FINANCING USES	\$1,425,341.92				\$1,425,341.92