

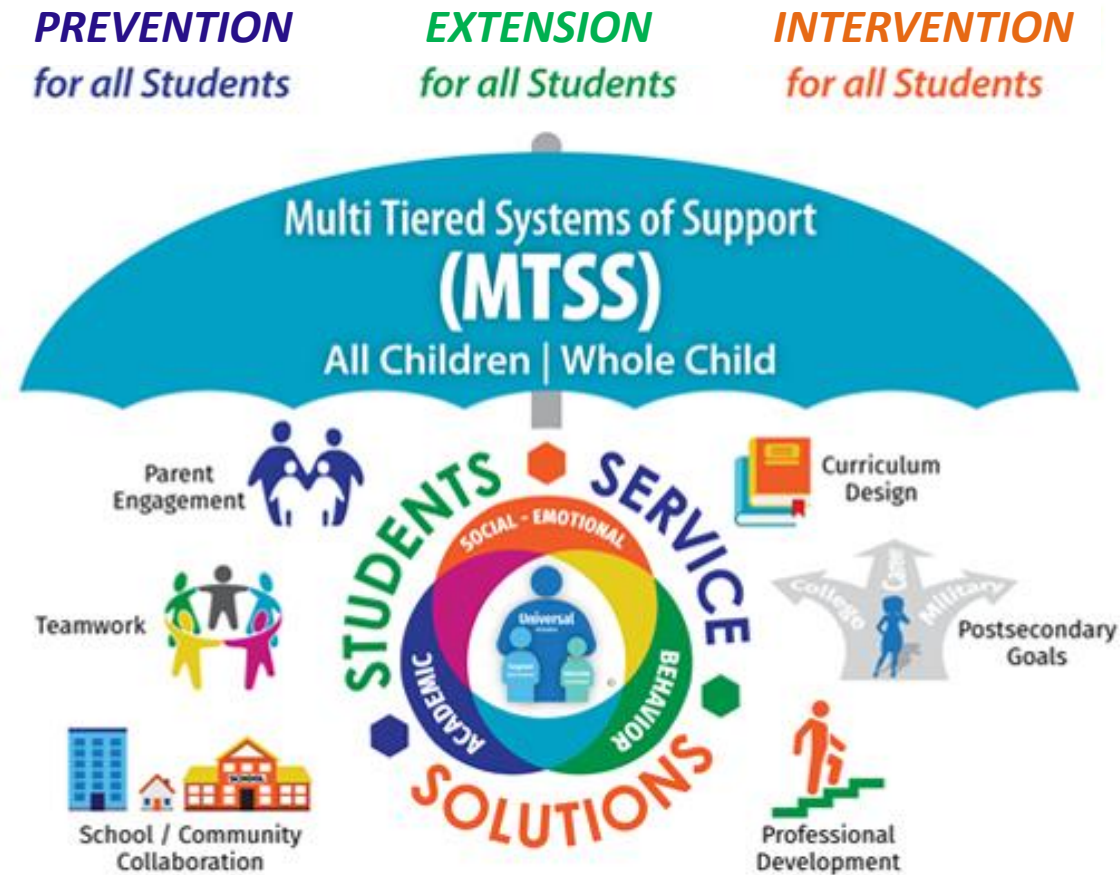


MTSS in Methacton

SUPPORTING THE WHOLE CHILD
THROUGH A MULTI-TIERED SYSTEM OF SUPPORTS (MTSS)

Education Committee- September 8, 2021

What is MTSS?



MTSS is a data driven, proactive approach to identifying students who may be struggling academically or behaviorally and using that data to direct the level of intervention needed.

Benefits of MTSS



Provides teachers with data about their students that enables them to best support student needs and to make informed instructional decisions.



Supports for students beyond the classroom target needs more specifically.

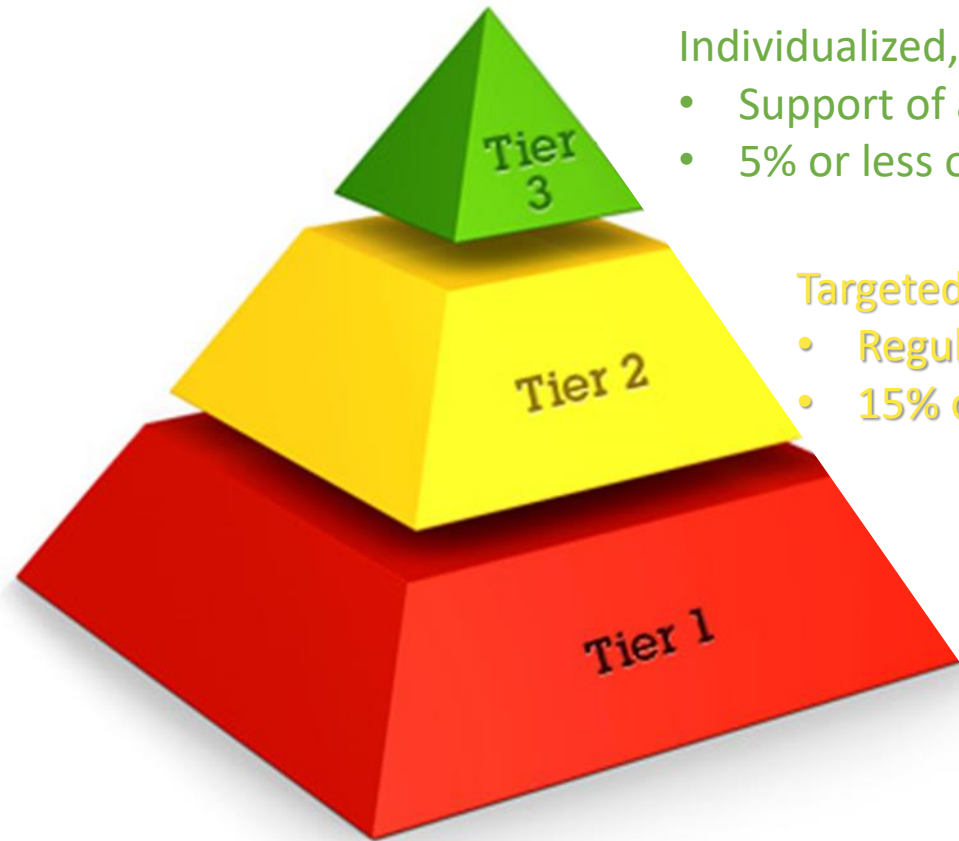


Student progress is monitored more specifically and frequently so interventions can be adjusted as needed.



Brings parents and guardians in as partners early on to promote greater success.

Structure of MTSS



Individualized, intensive intervention

- Support of a specialist
- 5% or less of student population on average

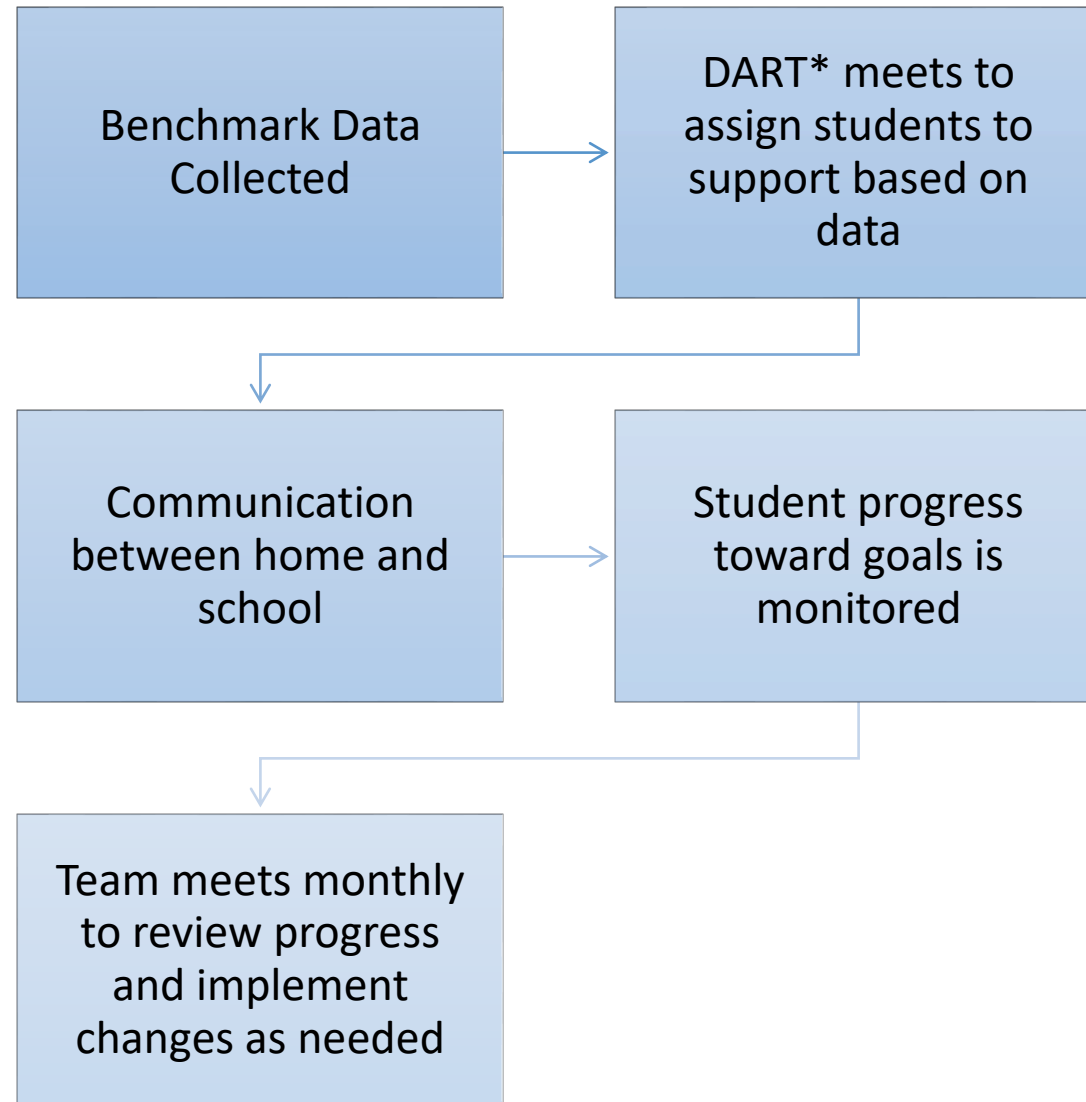
Targeted small group instruction or supports

- Regular classroom or support of specialist
- 15% of student population on average

Core classroom instruction and supports

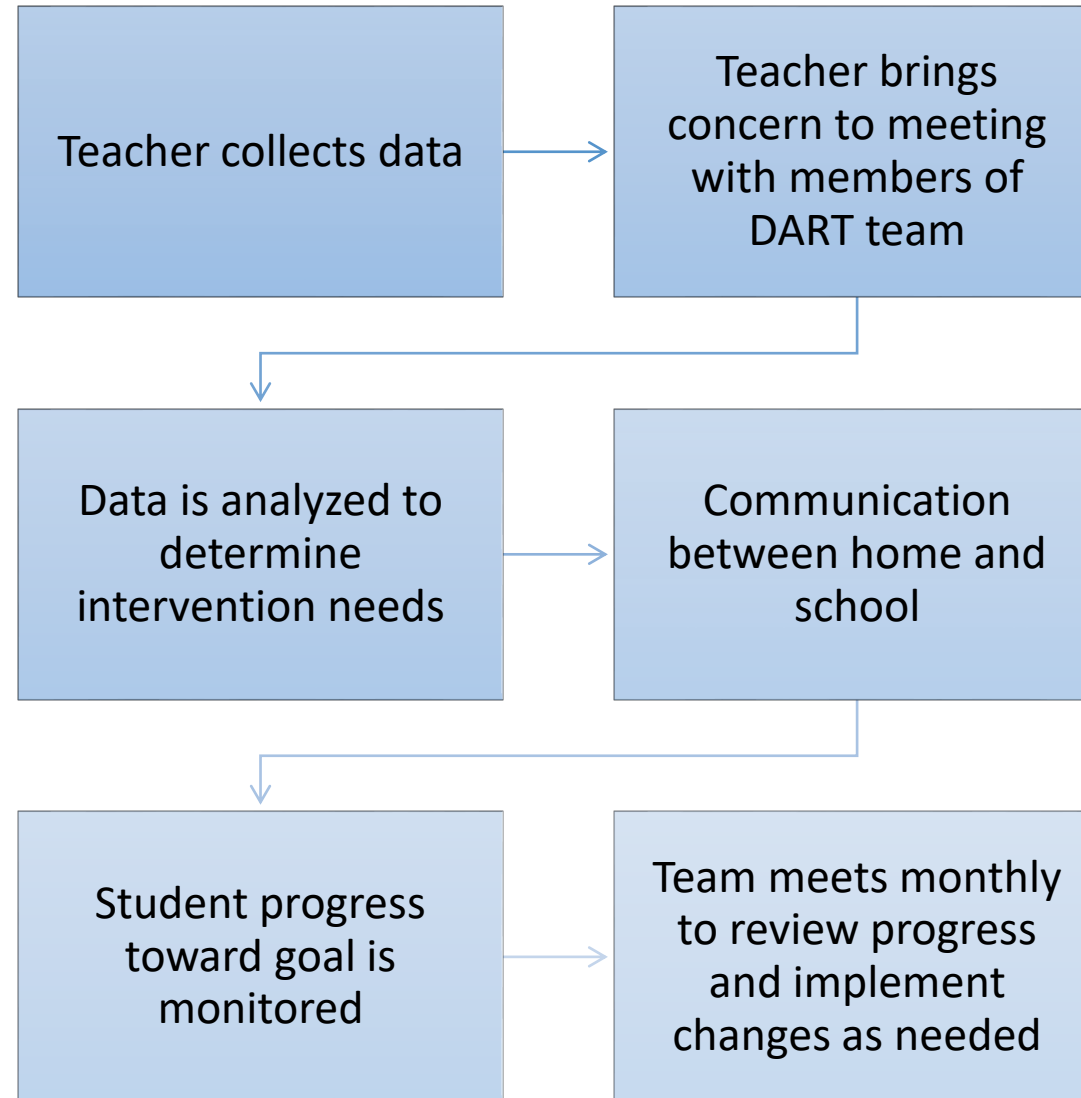
- Core curriculum
- Differentiated by classroom teacher
- 80% of student population on average

MTSS Process- Benchmark



*DART- Data Analysis Response Team

MTSS Process- Ongoing



Changes from Former Process

- Criteria for identification for intervention standardized
- Additional benchmark assessments in use
- Focus on Math and Behavioral needs in addition to Reading
- Goal setting for all tiers
- Smaller team meeting to monitor progress
- Grade level DART meetings to support core instruction and implementation
- Access to SOAR staff for teacher support

Plans for Growth of MTSS in Methacton

- Explore diagnostic assessments for Math and Reading
- Explore a benchmark assessment for behavioral and emotional needs
- Expand our materials resources for Tier 2 and 3 interventions as needed
- Expand in to grades 7-12
- Reflect on impact of inaugural year of SOAR

Questions and Feedback