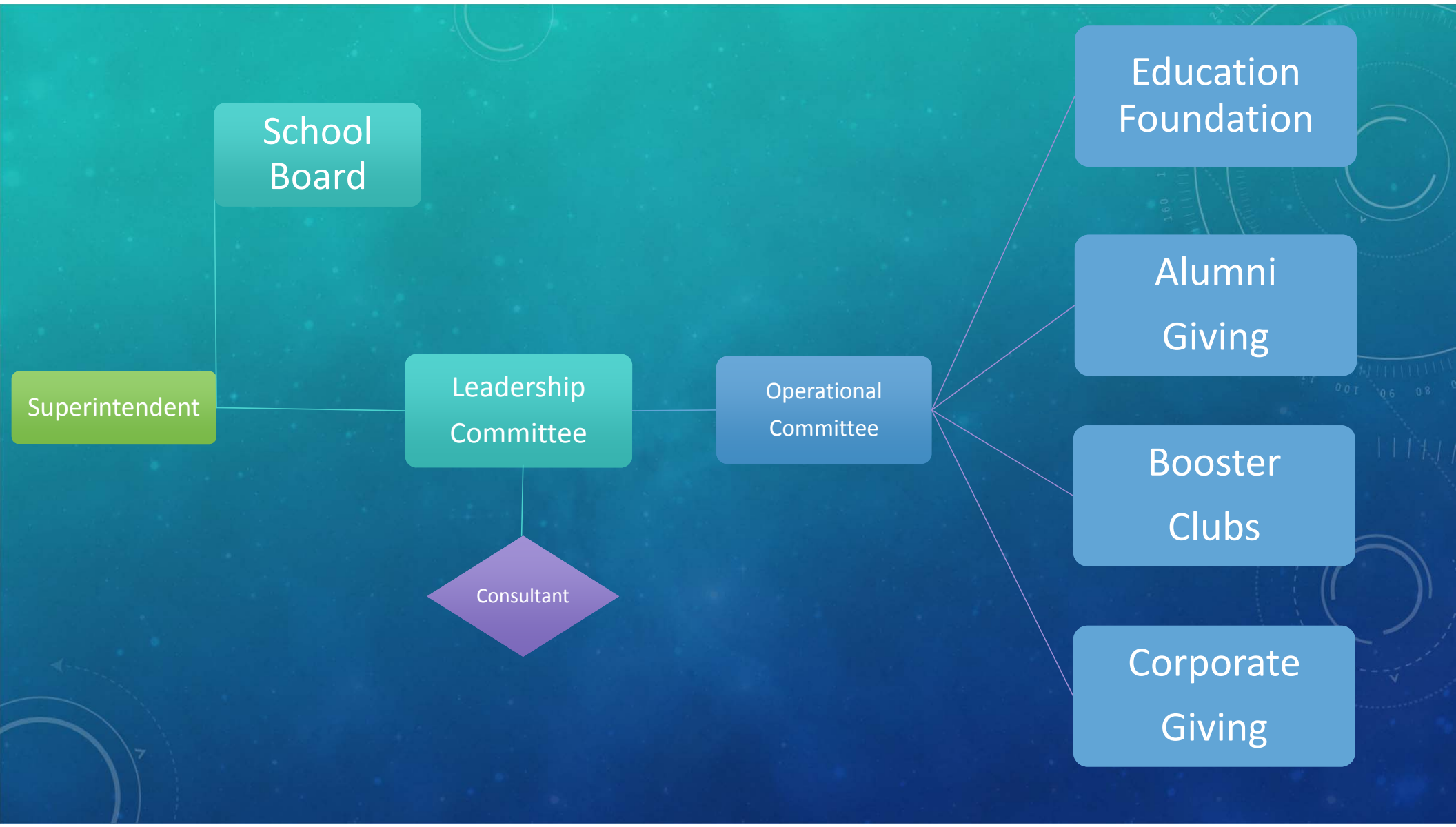
The background features a teal-to-blue gradient with faint, white circular patterns and a scale on the left side. The scale has markings from 140 to 260 in increments of 10. The circular patterns include solid and dashed lines with arrows, suggesting a technical or scientific theme.

METHACTON HIGH SCHOOL

FIELD FUNDRAISING CAMPAIGN & CHAIR PERSON

FIELD FUNDRAISING CAMPAIGN

- Create long-term perpetual funding (Giving) opportunities for all
- Create an atmosphere of community and opportunity
- Establish the giving to be handled by the school district
- Goal to raise \$500,000 to \$1,000,000



Superintendent

School Board

Leadership Committee

Consultant

Operational Committee

Education Foundation

Alumni Giving

Booster Clubs

Corporate Giving

FIELD FUNDRAISING CAMPAIGN

- Approve Administration to seek quotes from fundraising consultants
- Approve/name Campaign Leadership Committee Chairperson