

Methacton School District Opening Day Updates (2021-2022)

Dr. Susan Angstadt, Dr. Matt Walsh, and Ché Regina

August 24, 2021



Agenda

- Education Updates – Dr. Matt Walsh
- COVID Protocols & Mental Health Services – Dr. Susan Angstadt
- Operational Updates – Ché Regina



Education Updates

- Induction Class of 2021
- Welcome Back Activities
- Technology Updates
- Professional Development Days
- Methacton Virtual Academy



Induction Class of 2021

- 15 new professional staff hired as of 8/24
- August 23rd and 24th with four after-school sessions
- Departments and District overview
- Time at the building of record with mentors
- Year long program with end of year celebration planned
- Aligned with Danielson *Framework for Teaching*



Welcome Back Activities

- Tours held throughout the summer by principals and counselors
- Building climate, culture and connections
- Focus on team building
- Establishing a caring community of learners
- Less about curriculum first week, more about relationships



Technology Updates

- Classroom support
- Student device distribution
- District emails migrated to the cloud
- Curricular integrations continue

Professional Development Days

- August 25th and August 26th
- Departmental/Grade Level meetings
- School Based Faculty meetings
- Professional Obligations
 - Act 13 - Revised Teacher Evaluation System overview, Grades K-12
 - Act 126 – Mandated Reporter Training, Grades K-12
 - Act 71 – Youth Suicide Prevention Training, Grades 5-12
 - Update and Refresh Google Classrooms
 - Review IEP's/504's/Health Care Plans



Methacton Virtual Academy

- Brandywine Virtual Academy (BVA)
- One semester obligation (*1st semester ends 1/21/22*)
- Enrollment numbers as of 8/24/21: 57 total
 - Kinder: 4
 - 1st grade: 4
 - 2nd grade: 4
 - 3rd grade: 3
 - 4th grade: 3
 - 5th grade: 3
 - 6th grade: 5
 - 7th grade: 6
 - 8th grade: 3
 - 9th grade: 7
 - 10th grade: 3
 - 11th grade: 9
 - 12th grade: 3



COVID Protocols and Mental Health Services

- Mask Guide
- Lanyard Usage (K-6)
- Contact Tracing
- COVID-19 Assurance Testing
- Mental Health Services







Mask Guide

- Principals will be sharing a mask guide in their newsletters and on their school's website as a reference for staff, students and families.
- A sample of the guide is shown on the next slide.

CDC: Your Guide to Masks



This is a quick reference sheet of masking do's and don'ts as recommended by the Centers for Disease Prevention and Control (CDC).

DO choose masks that	DO NOT choose masks that
 Completely cover your nose and mouth.	 Are made of fabric that makes it hard to breathe, for example, vinyl.
 Fit snugly against the sides of your face and don't have gaps.	 Have exhalation valves or vents which allow virus particles to escape.

CHILDREN

 Find a mask that is made for children to help ensure proper fit.	 Check to be sure the mask fits snugly over the nose and mouth and under the chin and that there are no gaps around the sides.
--	---

PEOPLE WITH BEARDS

 Use a mask fitter or brace.	 Wear one disposable mask underneath a cloth mask that has multiple layers of fabric. The second mask should push the edges of the inner mask against the face and beard.
---	---

Source: Centers for Disease Control and Prevention, "Your Guide to Masks", Updated August 13, 2021.

Lanyard Usage (K-6)

- Students in grades K-4 will be issued a break-away lanyard so it can be used to hold their mask during lunch, recess and mask breaks.
- Student in grades 5-6 will be issued a break-away lanyard so it can hold both their student ID badge and their mask during lunch, recess (if applicable) and mask breaks.



Contact Tracing

- Our school nurses will be following the contract tracing guidance issued by the CDC and the Montgomery County Department of Health.
- The chart on the next page summarizes the steps they will use to identify who is a close contact.

COVID-19: WHO IS A CLOSE CONTACT?



Indoor Classroom

Students K-12 who are less than 3' for 15 minutes or more (regardless of masking)



Indoor Classroom

Students K-12 who are within 3' - 6' for 15 minutes or more and not wearing a mask



< 3 ft



OR



at least 3 ft



15 min. or more



Household Contact

Continual exposure without the ability to isolate the positive person away from household members



General Close Contact Guideline

Within 6' for 15 minutes or more (masks worn or not worn)



within 6 ft



15 min. or more

DO I NEED TO QUARANTINE?

Fully vaccinated and answered YES:

- Test on day 3-5 after an exposure and
- Wear a mask until receiving a negative test result.
- Does not need to quarantine unless having symptoms

Not fully vaccinated and answered YES:

- Needs to quarantine.

Exception to quarantine: A positive diagnostic test for Covid-19 within the last 3 months and no symptoms.

COVID-19 Assurance Testing

- The district will be offering voluntary assurance testing for staff at each school again this year. (pending board approval)
- Specific details on how to participate in assurance testing will be shared at the start of the school year.
- Testing will also be available for athletes participating in fall sports at Arcola and Methacton High School. (pending board approval)
- Specific details on how athletes can participate in this testing program will be provided at the start of the school year.



Mental Health Services

- The district is partnering with Central Behavioral Health to provide mental health services for our students who are eligible for this support.
- Springfield Psychological will be providing intensive mental health support (REACH program) to eligible students in grades K-12.
- Springfield Psychological is also developing an infographic for our staff on mental health awareness and signs and symptoms.



Operational Updates

- Staffing
- Busing
- Safety Protocols
- Alternate Events
- Tents / Outdoor Spaces



Staffing

- All contracted teaching positions are filled
 - Excluding the resignations we just received last week
- Utilizing substitutes for those teachers being held
 - Sixty (60) day hold
- Building Substitutes
 - Elementary and Skyview – one (1) building substitute each
 - Arcola and High School – two (2) building substitutes each
 - Still looking to increase building substitute numbers

Busing

- All busing routes are available on PowerSchool
- Masks will be required on buses*

*IEP/504 approved exceptions apply



Safety Protocols

- ALERTUS
- Threat Assessment trainings
- “Stop the Bleed” training
- Drills

Alternate Events

- Homecoming
- Prom preparation
- Graduation preparation
- Other building level activities

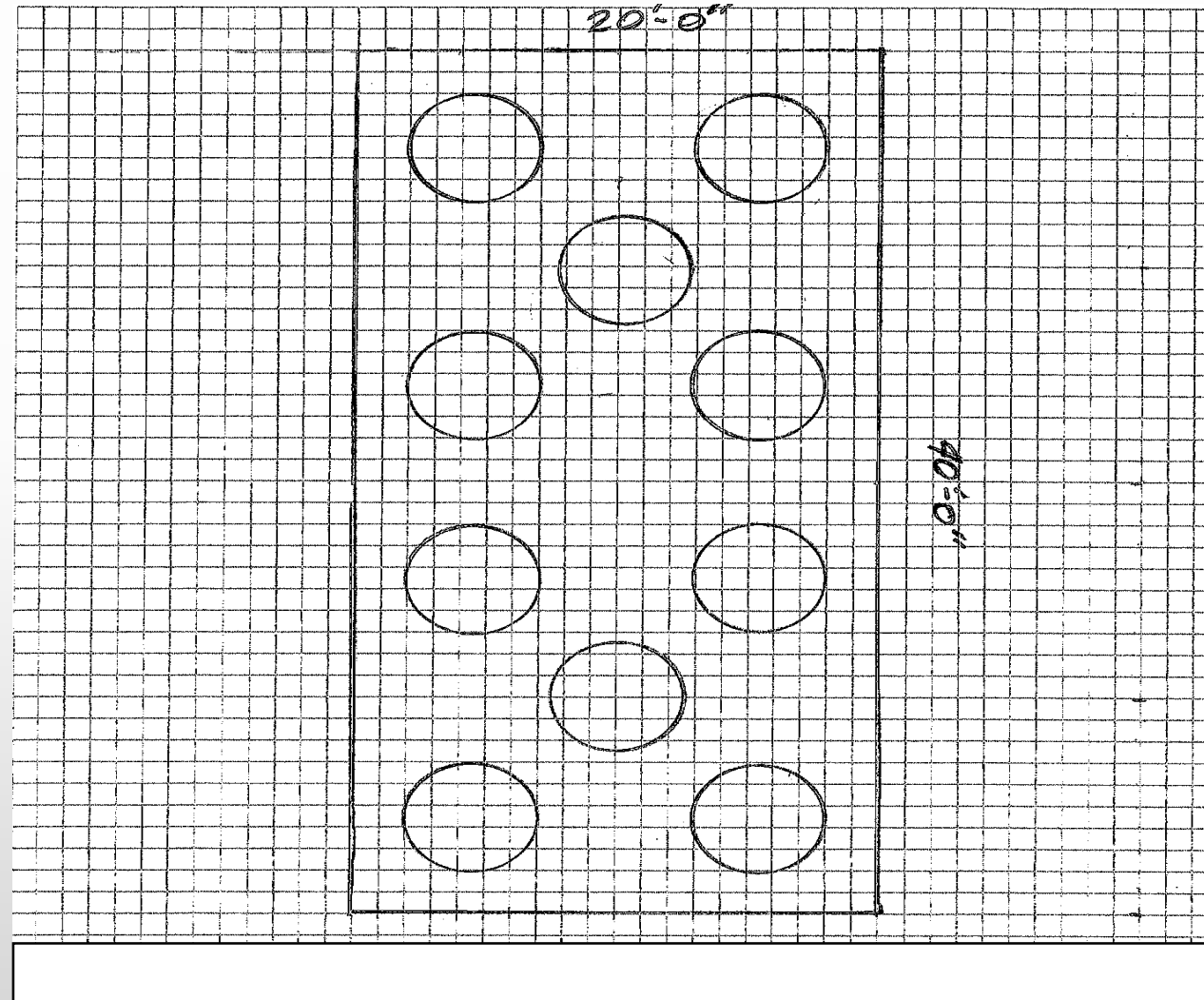


Tents / Outdoor Spaces

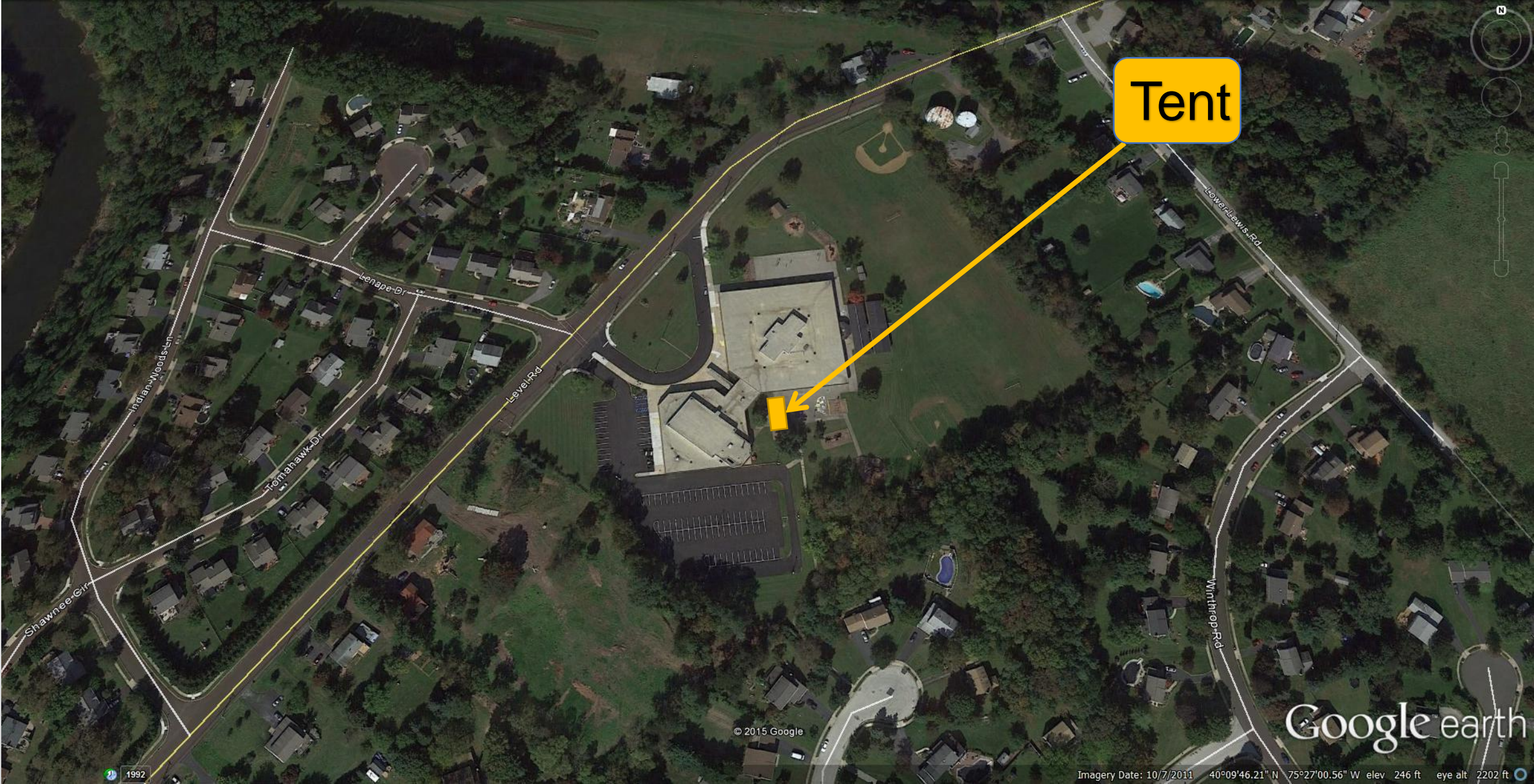
20x40'



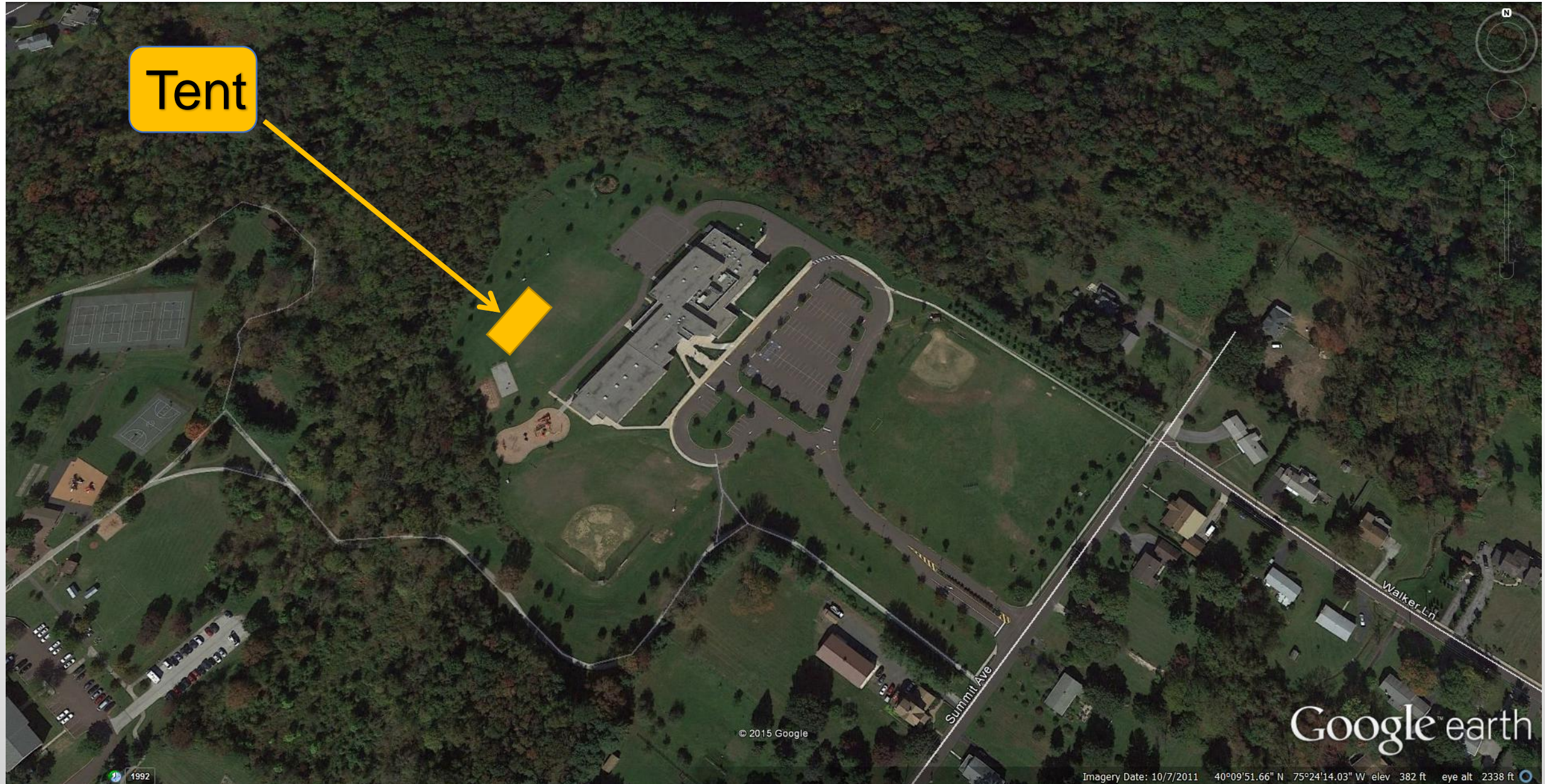
Table setup



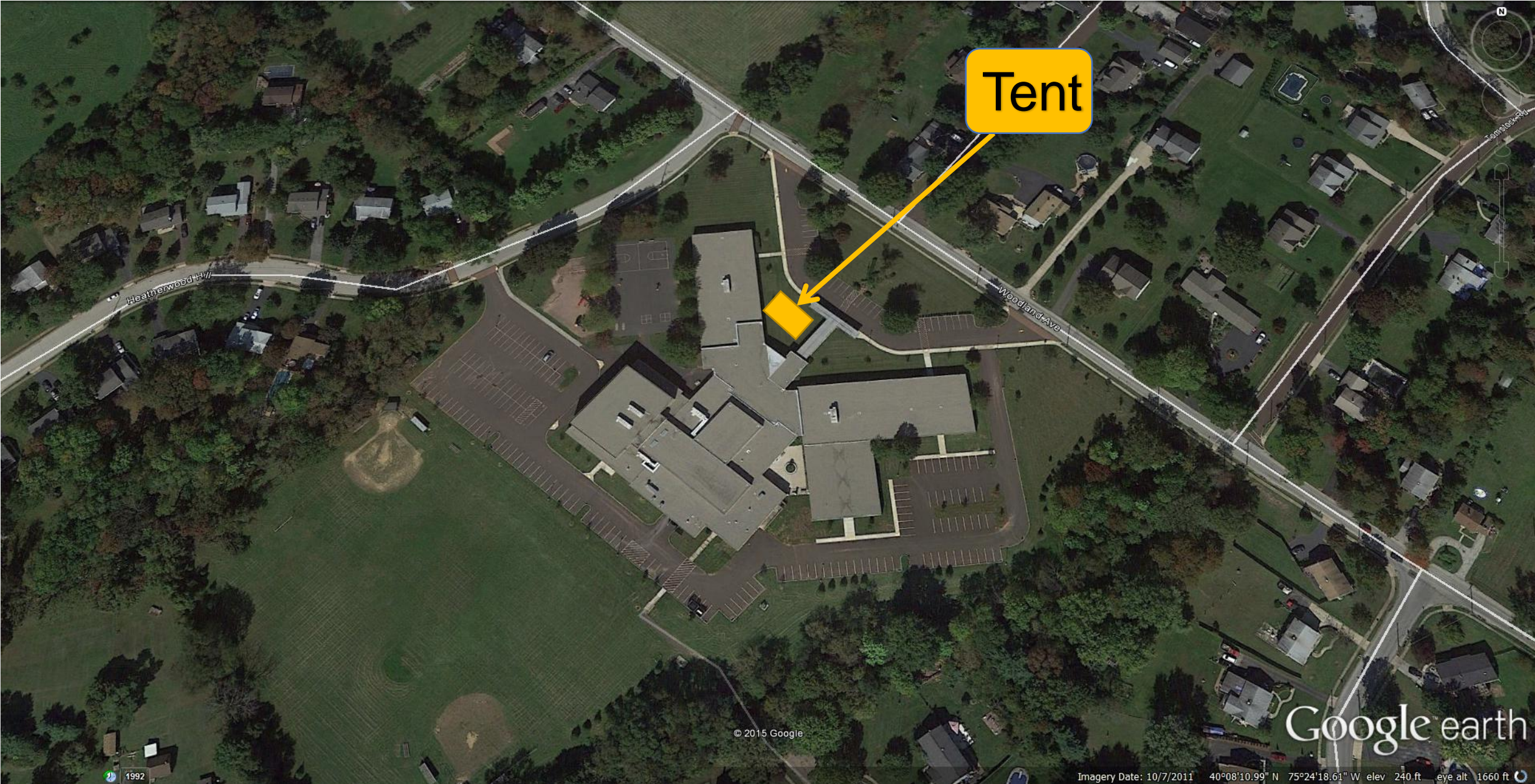
Arrowhead



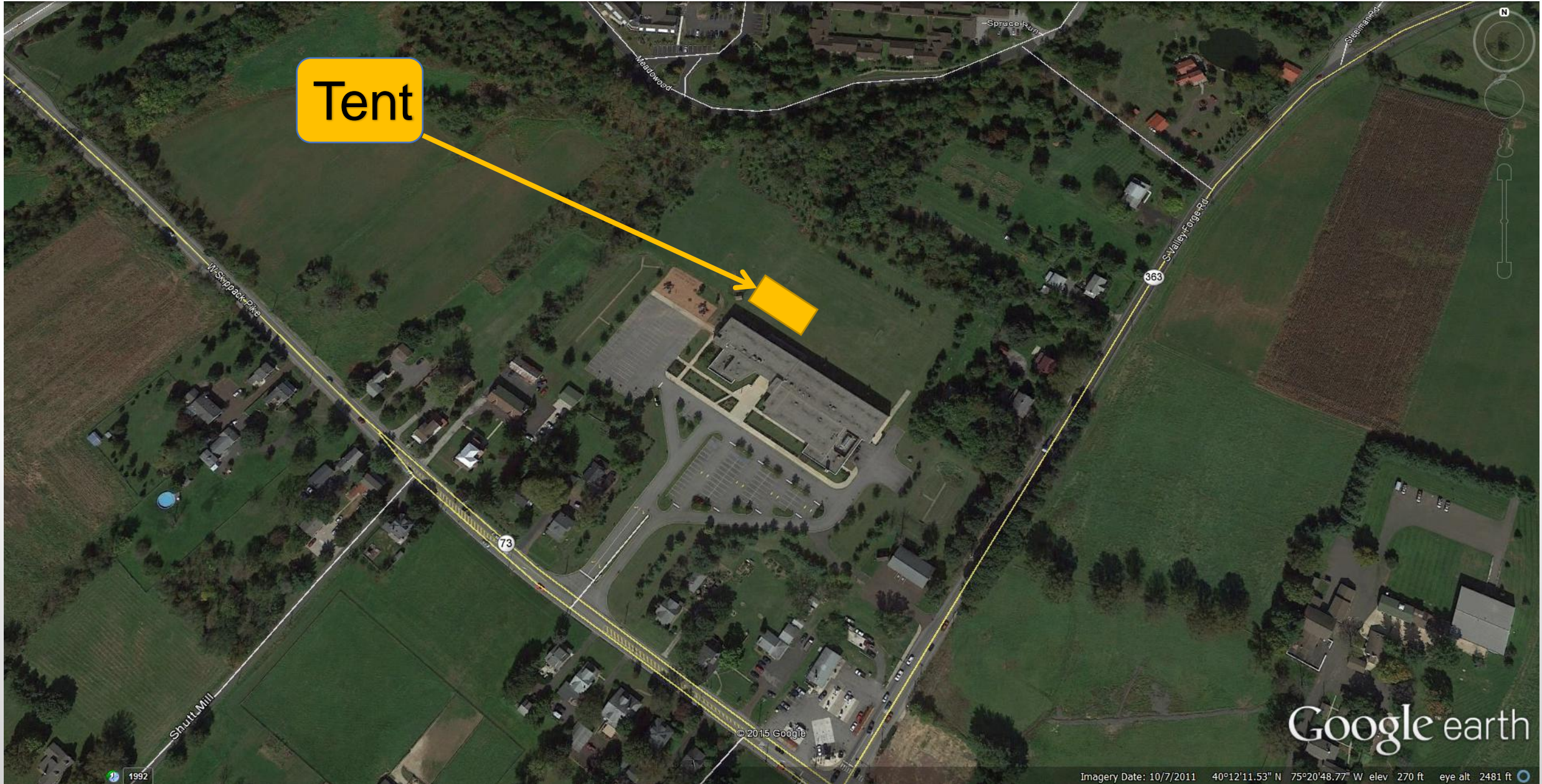
Eagleville



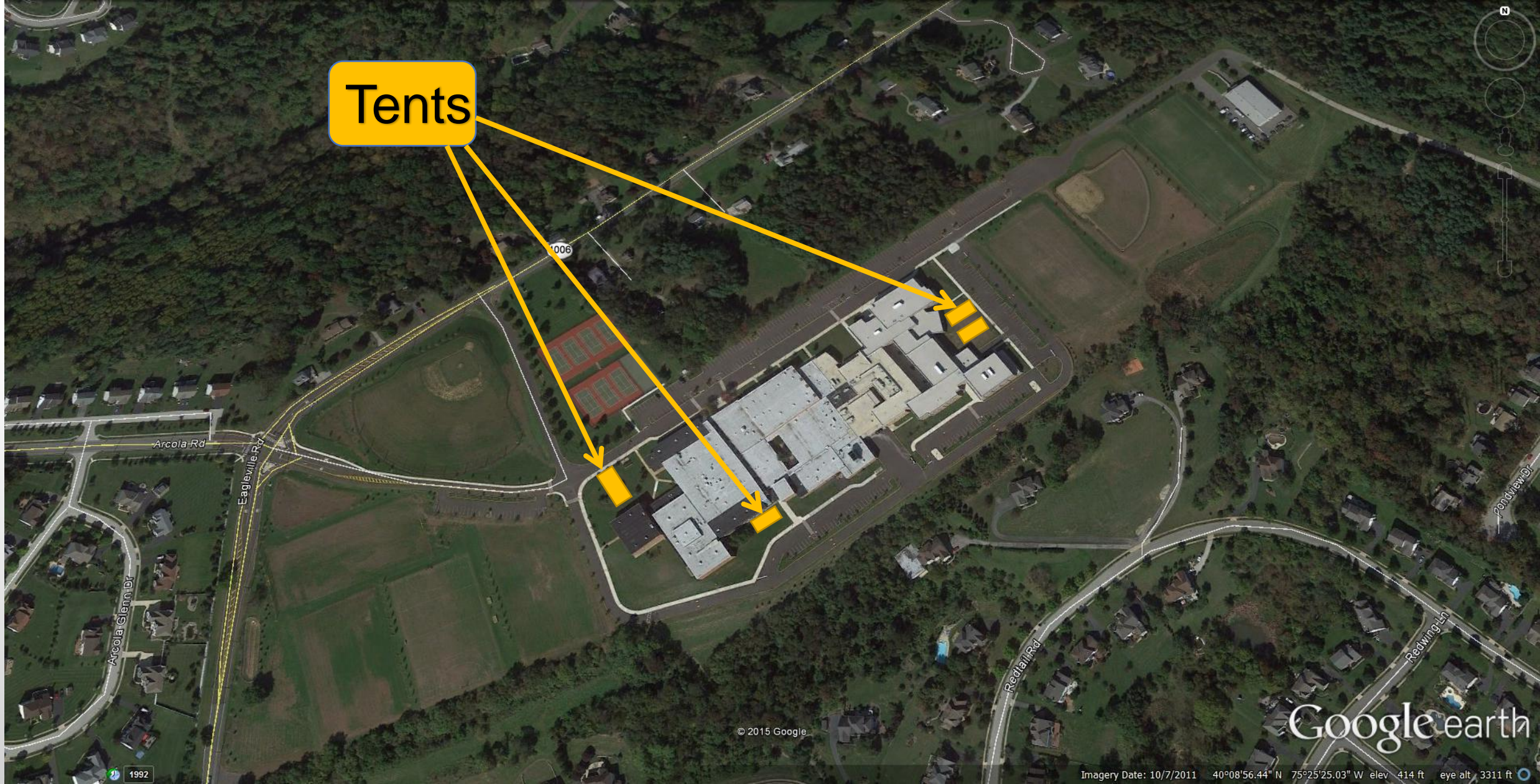
Woodland



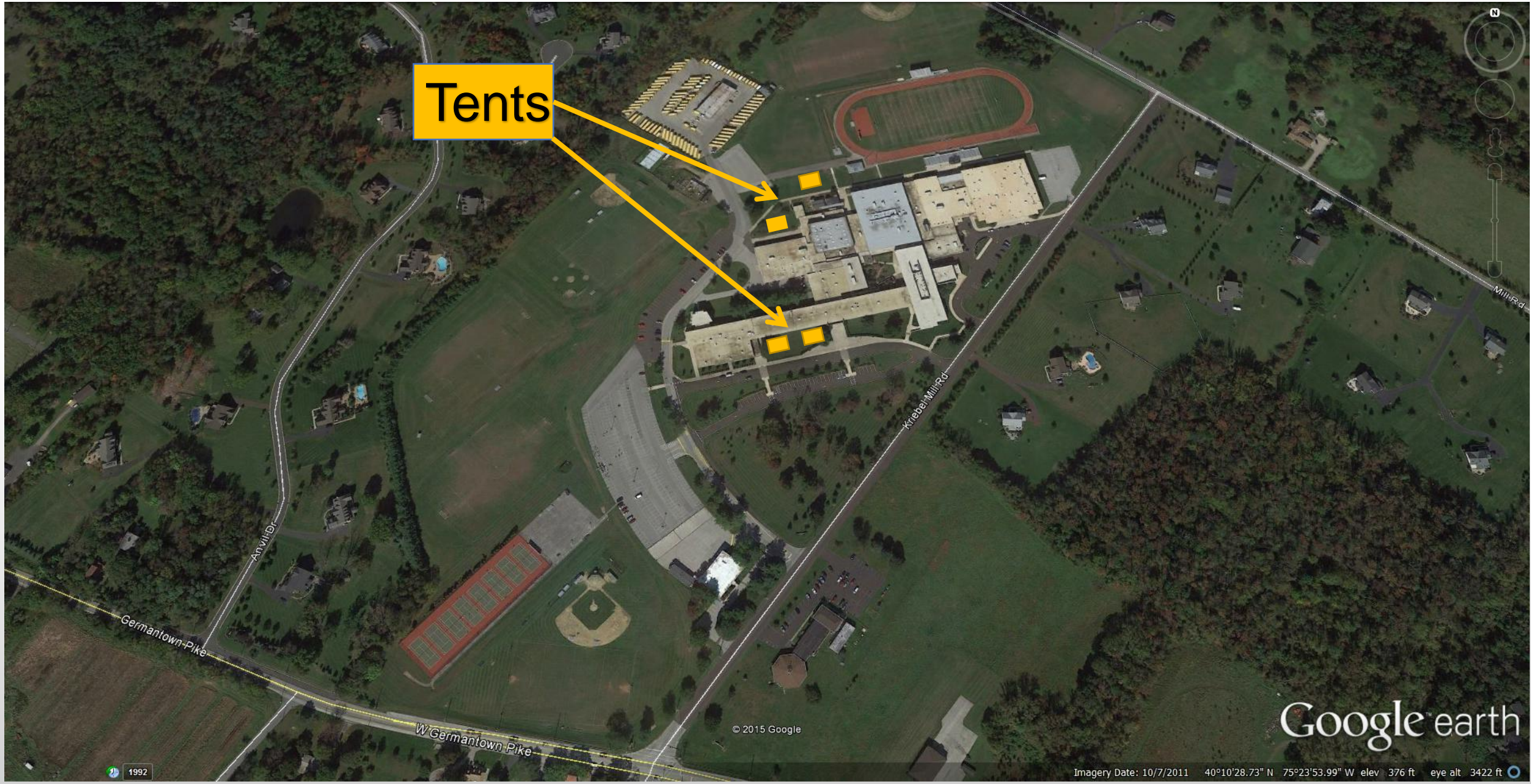
Worcester



Skyview and Arcola



High School



Thank you

Have a great school year!

