

STUDENT FOCUSED



HEALTHY



SAFE



ENGAGED



SUPPORTED



CHALLENGED

ENSURE AN
EXCEPTIONAL
MSD
EXPERIENCE
FOR ALL

COMMUNITY CENTERED

Methacton School District

November 10, 2022

Superintendent Dr. David Zerbe

STUDENT FOCUSED



HEALTHY



SAFE



ENGAGED



SUPPORTED



CHALLENGED

ENSURE AN
EXCEPTIONAL
MSD
EXPERIENCE
FOR ALL

COMMUNITY CENTERED

State of the District

- Programs
- Operations
- Performance
- Future Direction
 - Q & A

STUDENT FOCUSED



HEALTHY



SAFE



ENGAGED



SUPPORTED



CHALLENGED

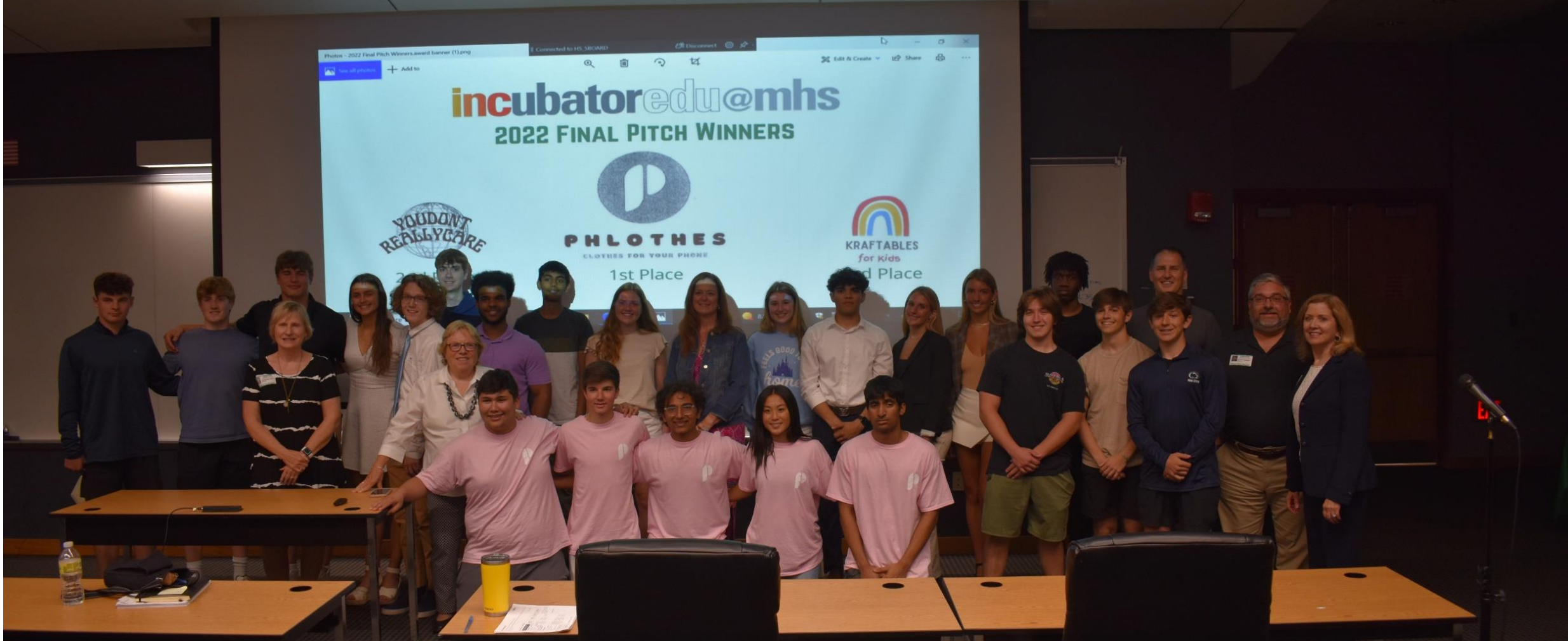
ENSURE AN
EXCEPTIONAL
MSD
EXPERIENCE
FOR ALL

COMMUNITY CENTERED

Full Day Kindergarten



Entrepreneurship Program - Shark Tank



Hydroponics -Windy Hill Farm



- REACH
- Mental Health Services
- Anti Drug & Alcohol
- Anti Bullying
- Community Service

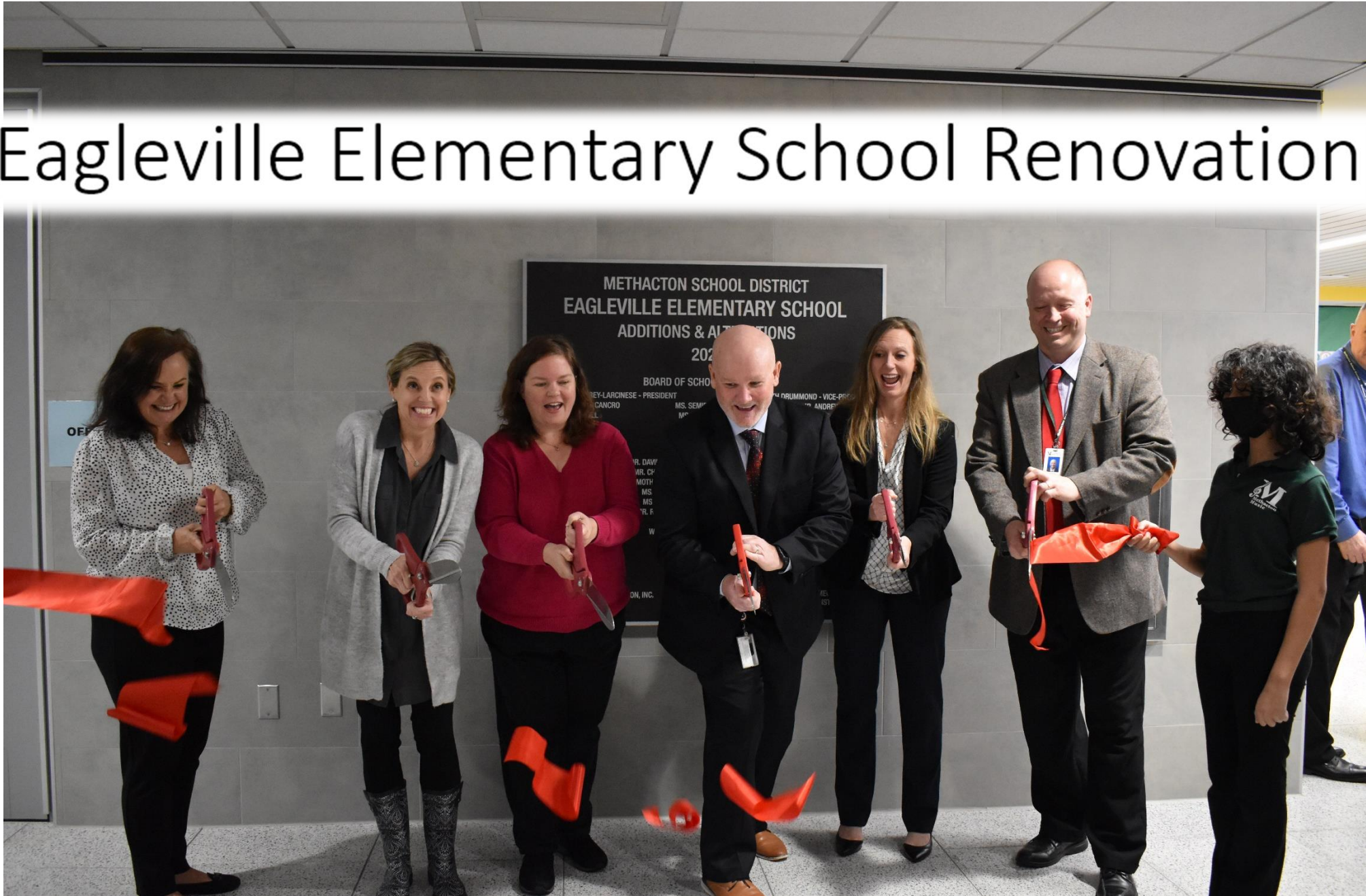




ARROWHEAD ELEMENTARY



Eagleville Elementary School Renovation



Safety

- Bus Patrol
- School Visitor and Volunteer Management
- School Safety – Protocols, Training, Physical Security, Comcast partnership, & Lower Providence Twp. and State Police collaboration



Facts

93%

**Percent of the Class of 2022
choosing to further
their education
beyond high school**

\$20.9M

**Amount of
scholarships & grants
earned by the
Class of 2022**

50

**Honors/Advanced
Placement/Dual Enrollment
courses offered**

66

**Total of National
Merit Scholarship
Finalists (2017-2022)**

1,900

**Collective community
service hours served by
the Class of 2022**

Facts

1,198

Methacton

1,060

National

**Average composite
SAT scores**

90%

Methacton

60%

National

**Percent of students scoring
3 or higher on AP Exams**

15

**Average Number of
Years of Teaching
Experience**

12:1

**Average
student to
faculty ratio**

76%

**Percent of faculty
holding an
advanced degree**

ATHLETICS & ACTIVITIES

Methacton is proud to offer 25 athletic programs at the high school & middle school and more than 100 clubs & activities across all grade levels.



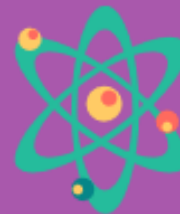
**Boys Varsity Basketball
PAC Champions
2018, 2019, 2020, 2022**



**Girls & Boys Track &
Field PAC Champions
2022**



**Named one of America's
Best Communities
for Music Education
2017-2022**



**Science Fair Club
earned \$56,000 in
scholarships
2021-2022**

STUDENT FOCUSED



HEALTHY



SAFE



ENGAGED



SUPPORTED



CHALLENGED

COMMUNITY CENTERED

ENSURE AN
EXCEPTIONAL
MSD
EXPERIENCE
FOR ALL

RANK



	2019-2020	2020-2021	2021-2022	Change from 2019-2020
US News & World Report	65	56	62	↑3
Niche	74	67	51	↑23
School Digger	67	53	50	↑17



PERFORMANCE

	2021	2022
Total AP Students	323	398
Number of Exams	689	830
AP Students with Scores 3+	288	353
% of Total AP Students with Scores 3+	89.16	88.69



2022 Methacton AP Scholars Results:

- 55 AP Scholars
- 34 AP Scholars with Honor
- 81 AP Scholars with Distinction
- 4 AP Capstone Diploma



STUDENTS

BASELINE	TARGET
-----------------	---------------

School Climate: 51%	63.3%
School Belonging: 74%	80.5%
Safety: 79%	84.3%
School Engagement: 24%	43%
Value of School: 97%	97.8%



STAFF

BASELINE	TARGET
-----------------	---------------

School Climate: 44%	58%
Prof. Development: 70%	77.5%
Leadership: 59%	69.3%
Technology: 36%	52%



FAMILY

BASELINE	TARGET
-----------------	---------------

School Climate: 56%	67%
School Safety: 74%	80.5%
Leadership: 79%	84.3%
Family Engagement: 15%	36.3%

FEEDBACK

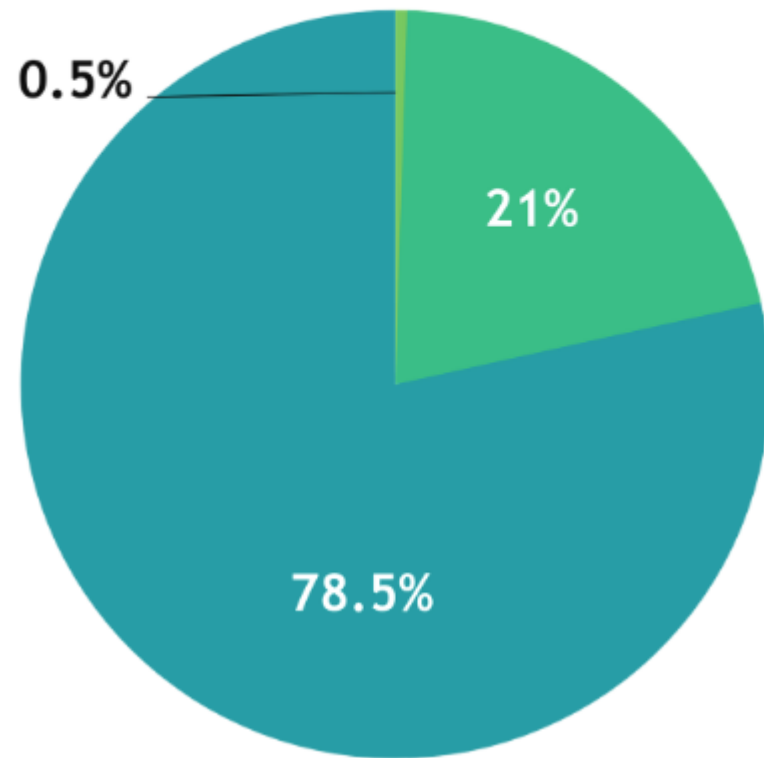
**INCREASE CONSTITUENT
FAVORABLE FEEDBACK BY
25% IN NEXT 5 YEARS**

**ENSURE AN
EXCEPTIONAL
MSD
EXPERIENCE
FOR ALL**

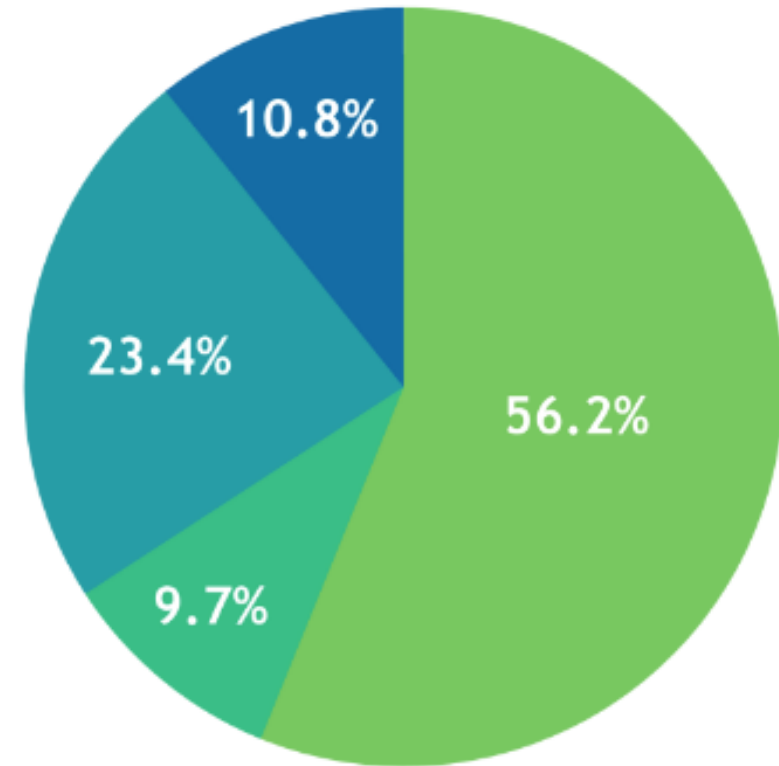
**INCREASE DISTRICT
RANKING BY 25 PLACES
IN NEXT 5 YEARS**

Budget

REVENUE

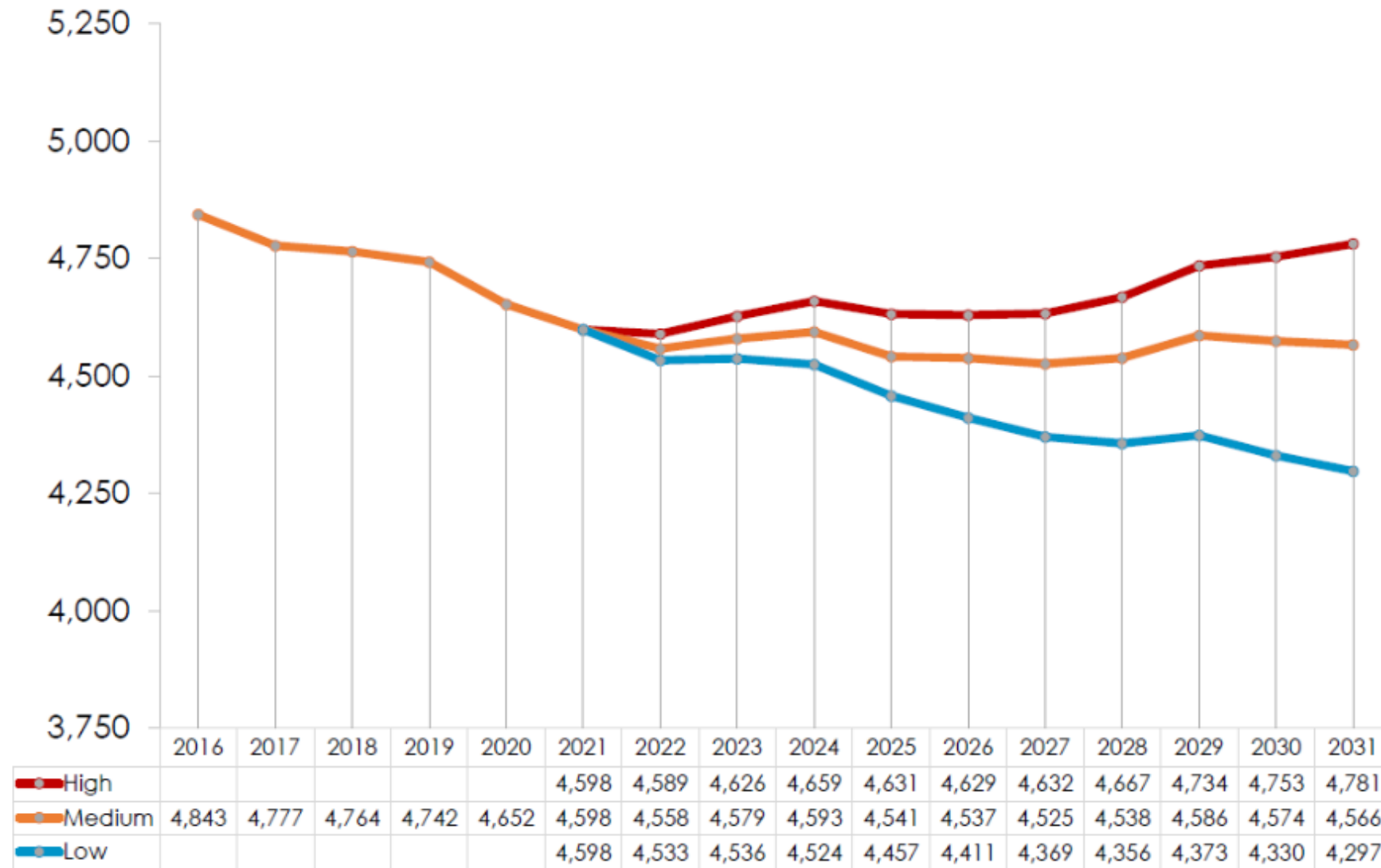


EXPENDITURES



Enrollment

District-wide Forecasts



Food Services



Busing





- Increase capacity and number of student visits (eliminate center projection)
- Increase the ease of co-curricular lesson capabilities and ease of use with classroom teachers
- Update & Future-Proof Aging Technology, Hardware, and Facilities
 - **Computer/Projection** (installed 2013-Higher Resolution)
 - **Light system** (installed 2013)
 - **Seating** (Original post and arrangement from 1974)
 - **Dome** (Original 1974 -New has more maintenance options)
 - **HVAC** (Original - separate from building)



“The Planetarium is a laboratory, **NOT** to produce astronomers for the world, but to produce people who are aware of the world around us.”
- Dr. Gerald Mallon





STRENGTHENING CORE INSTRUCTION

Focus on Mathematics & Reading Instruction

- School Counselor Review
- Inclusive Practices
- HS Music Program
- STEM Academy

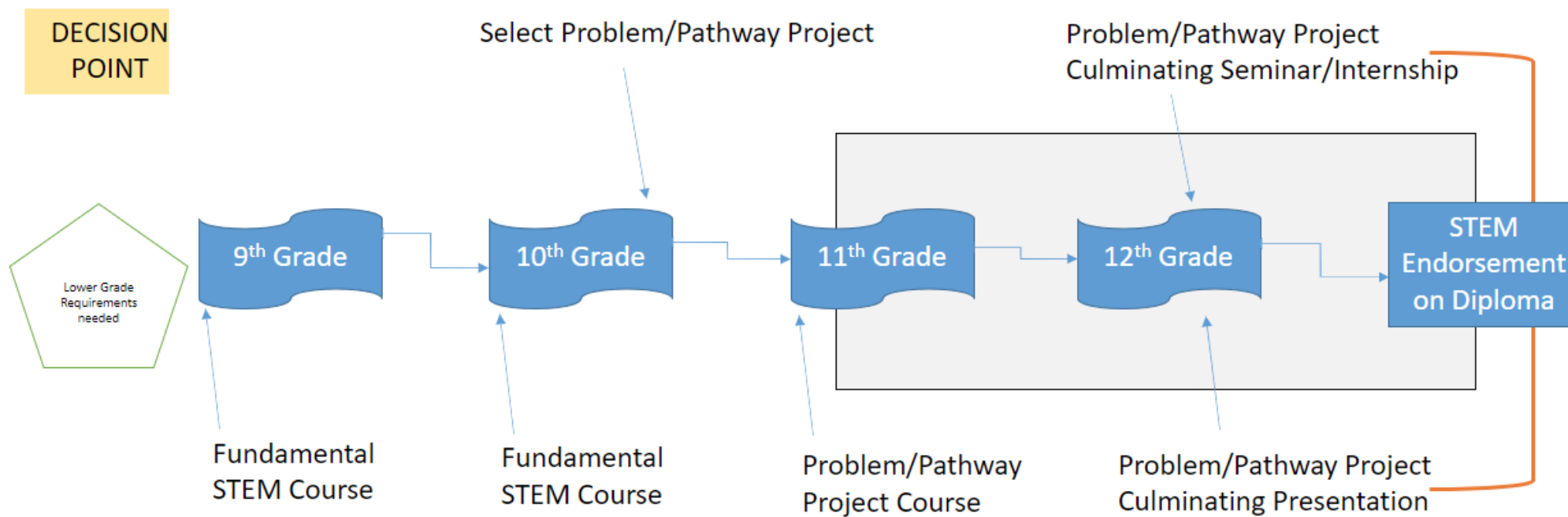




Audubon Elementary School – Disposition and potential future use



FAB LAB





Fab Lab
TULSA

HARDESTY CENTER



Methacton High School Campus – Consolidated Master Plan/Strategic Plan Renovations vs. Gradual Renovations

METHACTON STRATEGIC PLAN -Year Due

Search...



Due 2022-2023 SY

ASSIGNEE

DUE DATE

PRIORITY

PROGRESS

YEAR DUE

METHACTON STRATEGIC PLAN / ATHLETICS & ACTIVITIES LIST 1

STRATEGY 5A - Implement Athletic and Activity Parent Booster 501-c3 and Parent Manual 1 supported



Sep 30



80%

Due 2022-20...

METHACTON STRATEGIC PLAN / EXPERIENCE LIST 1

STRATEGY 8K - Outline Student and Parent Experience Journey



Dec 30



0%

Due 2022-20...

METHACTON STRATEGIC PLAN / ATHLETICS & ACTIVITIES LIST 1

STRATEGY 5E - Expand Unified Sports Program to 3 events in 5 years and 25% increase in participation 2 engaged healthy safe +1



3/1/23



33%

Due 2022-20...

METHACTON STRATEGIC PLAN / PUPIL SERVICES LIST 1

STRATEGY 3F - Conduct a K-12 School Counselor Program review to ensure resources, programming and outcomes are effectively and efficiently aligned to best practices in school counseling 6 healthy safe supported



3/30/23



33%

Due 2022-20...

METHACTON STRATEGIC PLAN / COMMUNICATIONS LIST 1

STRATEGY 4E - Increase parent volunteers by 25% in 3 years 5 engaged supported



3/30/23



38%

Due 2022-20...

METHACTON STRATEGIC PLAN / FINANCE AND HUMAN RESOURCES LIST 1

STRATEGY 7I - Implement planned effort to recapture charter/virtual/private/parochial students 2 supported



3/31/23



33%

Due 2022-20...



ANNUAL REPORT

2021-2022 School Year

STUDENT FOCUSED



HEALTHY



SAFE



ENGAGED



SUPPORTED



CHALLENGED

COMMUNITY CENTERED

ENSURE AN
EXCEPTIONAL
MSD
EXPERIENCE
FOR ALL